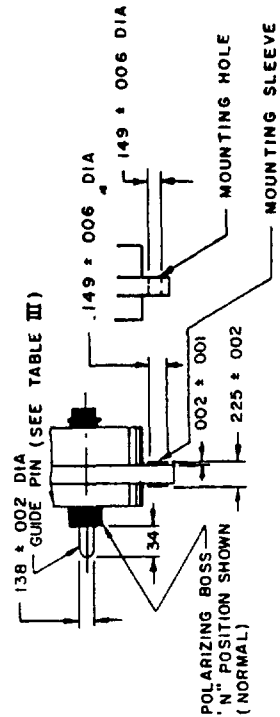
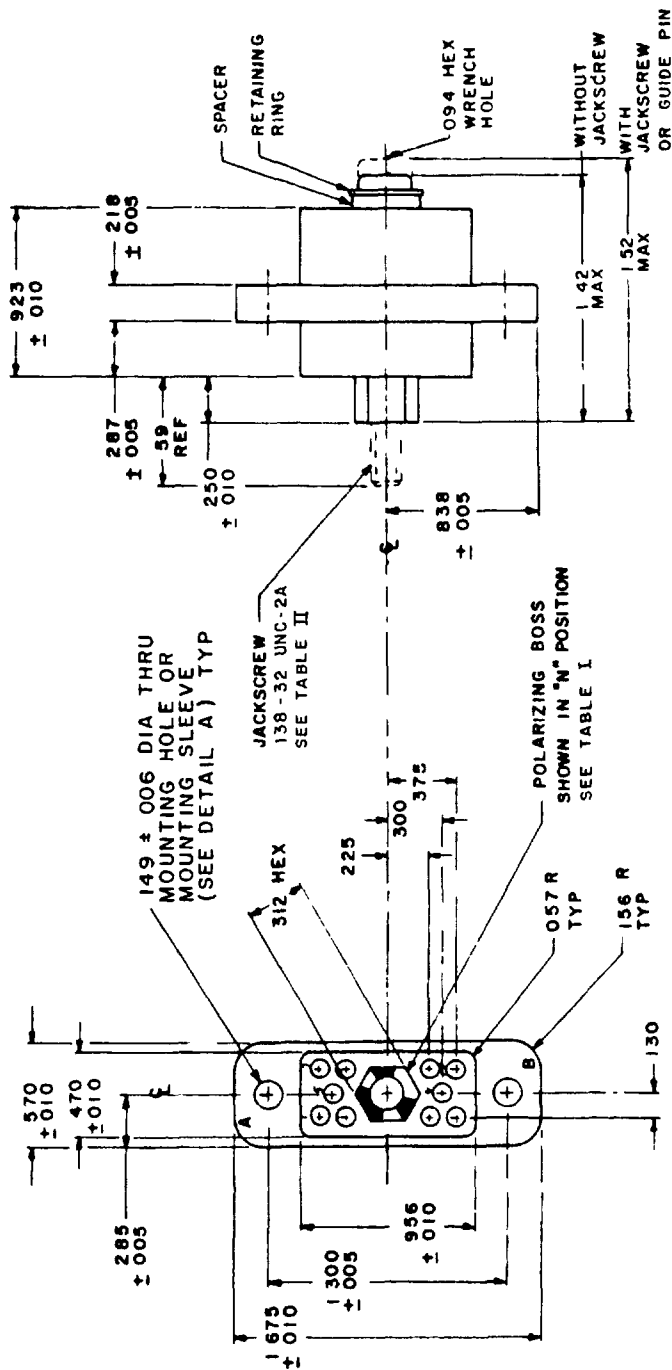


This military standard is approved for use by all Departments and Agencies of the Department of Defense. Selection for all new engineering and design applications and for repetitive use shall be made from this document.

Reviewer activities: Army MI, MU, AT, AS, SH, OS
Navy AS, SH, OS
Air Force 11, 80
DSA - ES

User activities: Army ME, AV, WC
Navy MC
Air Force



DETAIL A

Design standard for use with MIL-C-28748/10

© Entire standard revised

P A Navy - EC	International Interiors	TITLE INSERT (INSULATOR), RECTANGULAR CONNECTOR POLARIZED CENTER SCREW-LOCK, ELECTRICAL, 10 (SIZE 16 CRIMP REMOVABLE) SOCKET CONTACTS	MILITARY STANDARD
Other Cus: AF - 85 Army - EL			MS 18156
Procurement Specification MIL-C-28748	SUPERSEDES		SHEET 1 OF 3

DD FORM 1 SEP 63 672 (Coordinated) PREVIOUS EDITIONS OF THIS FORM ARE OBSOLETE

5935-2004-6

APPROVED 20 Dec 1965 REVISED (A) 29 Jul 1968 (B) 20 May 1970 (C) 8 July 1976

FED SUP CLASS
5935

ME, AV, WC
MC
User oct vines Army
Navv Navy
Air Force Air Force

MI, MU, AT
AS, SH, OS
Reviewer activitie Army
Navv Navy
Air Force 11, 80
DSA - ES

This military standard is approved for use by all Departments and Agencies of the Department of Defense. Selection for all new engineering and design applications and for repetitive use shall be made from this document.

FED SUP CLASS
5935

TYPE
SEE TABLE I

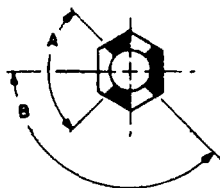


TABLE I		
TYPE	A	B
1	90°	135°
2	85°	137° 30'

TABLE II		
MS PART NUMBER	POLARIZATION *	JACKSCREW
MS 18156-1N	N (TYPE 1)	SUPPLIED WITH CONNECTOR
MS 18156-1V	V (TYPE 1)	
MS 18156-1W	W (TYPE 1)	
MS 18156-1X	X (TYPE 2)	
MS 18156-1Y	Y (TYPE 2)	
MS 18156-1Z	Z (TYPE 2)	
MS 18156-2N	N (TYPE 1)	NOT SUPPLIED WITH CONNECTOR POLARIZING BOSS THREADED INTERNALLY 138-32 UNC-2B
MS 18156-2V	V (TYPE 1)	
MS 18156-2W	W (TYPE 1)	
MS 18156-2X	X (TYPE 2)	
MS 18156-2Y	Y (TYPE 2)	
MS 18156-2Z	Z (TYPE 2)	

TABLE III		
MS PART NUMBER	POLARIZATION *	GUIDE PIN
MS 18156-3N	N (TYPE 1)	SUPPLIED WITH CONNECTOR
MS 18156-3V	V (TYPE 1)	
MS 18156-3W	W (TYPE 1)	
MS 18156-3X	X (TYPE 2)	
MS 18156-3Y	Y (TYPE 2)	
MS 18156-3Z	Z (TYPE 2)	
MS 18156-4N	N (TYPE 1)	NOT SUPPLIED WITH CONNECTOR POLARIZING BOSS WITH 144 ± 002 ID TO ACCEPT GUIDE PIN
MS 18156-4V	V (TYPE 1)	
MS 18156-4W	W (TYPE 1)	
MS 18156-4X	X (TYPE 2)	
MS 18156-4Y	Y (TYPE 2)	
MS 18156-4Z	Z (TYPE 2)	

* LARGE OPENING IN POLARIZATION BOSS MUST BE ADJACENT TO
POLARIZATION LETTER ON CONNECTOR BODY

P A Navy - EC	International interests	TITLE INSERT (INSULATOR), RECTANGULAR CONNECTOR POLARIZED CENTER SCREW- LOCK, ELECTRICAL, 10 (SIZE 16 CRIMP REMOVABLE) SOCKET CONTACTS	MILITARY STANDARD
Other Cust AF - 85 Army - EL			MS 18156
Procurement Specification MIL-C-28748		SUPERSEDES	SHEET 2 OF 3

FED SUP CLASS
5935User activities Army ME, AV, WC
Navy MC
Air ForceArmy MI, MU, AT
Navy AS, SH, OS
Air Force 11, 80
DSA - ES

Reviewer activities

This military standard is approved for use by all Departments and Agencies of the Department of Defense. Selection for all new engineering and design applications and for repetitive use will be from this procurement

INCHES	MM	INCHES	MM
.001	03	.285	7 24
.002	05	.287	7 29
.005	13	.300	7 62
.006	15	.312	7 93
.010	25	.340	8 64
.057	1 45	.375	9 53
.094	2 39	.470	11 94
.130	3.30	.570	14.48
.138	3.51	.590	14.99
.149	3 78	.838	21 29
.156	3.96	.923	23 44
.218	5.54	.956	24 28
.225	5 72	1 300	33 02
.250	6 35	1 420	36 07
		1 520	38 61
		1 675	42 55

NOTES:

1. Dimensions are in inches.
2. Unless otherwise specified, tolerance is $\pm .015$ (.38 mm).
3. Metric equivalents (to the nearest .01 mm) are given for general information only and are based upon 1 inch = 25.4 mm.
4. Tolerance between any two adjacent contact centers shall be $\pm .004$ (.10 mm). Tolerance between any two contact centers, other than adjacent contacts, shall be $\pm .006$ (.15 mm).
5. Contact hole details shall be in accordance with MIL-C-28748.
6. For mating connector see MS18155 (pin body)
7. Dimensions symmetrical about centerlines.
8. For design feature purposes, this standard takes precedence over procurement documents referenced herein.
9. Reference documents shall be of the issue in effect on date of invitation for bid.
10. Insert material shall be in accordance with MIL-C-28748.
11. Flatness, squareness and parallelism shall be within dimensional tolerances.
12. Center polarizing hardware may be rotated by removing retaining ring and spacer or removing cap (left hand thread) at rear of insert.
13. Maximum insertion and withdrawal force (connector assembly) shall be 9 pounds.
14. Maximum torque required at jackscrew to properly engage or disengage connector shall be 1.5 inch pounds.
15. Jackscrew wrench size 3/32 hex

APPROVED 20 Dec 1965 REVISED C For changes see sheets 1, 2 and 3

P A Navy - EC	International inserts	TITLE INSERT (INSULATOR), RECTANGULAR CONNECTOR POLARIZED CENTER SCREW- LOCK, ELECTRICAL, 10 (SIZE 16 CRIMP REMOVABLE) SOCKET CONTACTS	MILITARY STANDARD
Other Cus. AF - 85 Army - EL			MS18156
Procurement Specification MIL-C-28748	SUPERSEDES		SHEET 3 OF 3