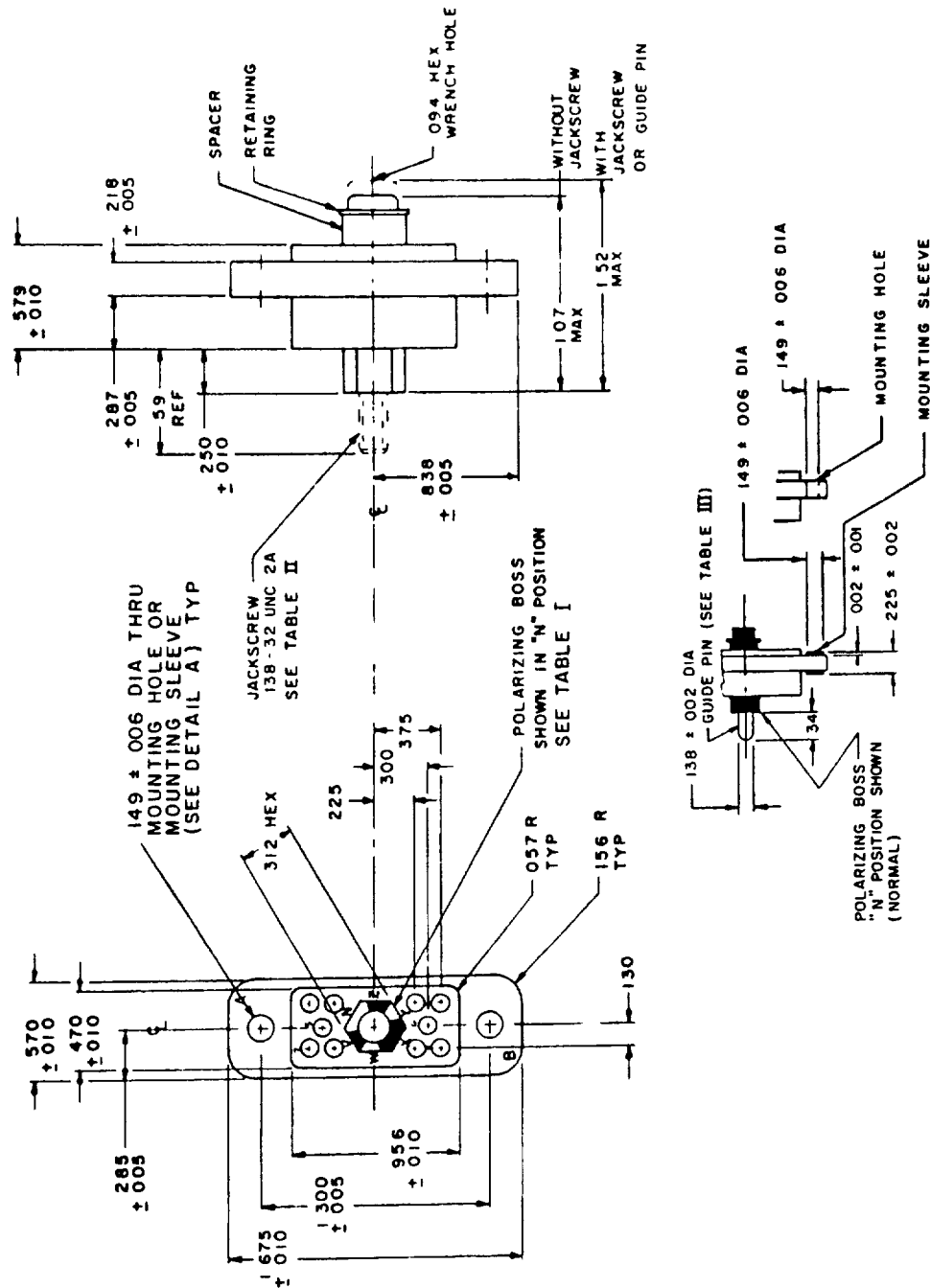


This military standard is approved to use by all Departments and Agencies of the Department of Defense. Selection for all new engineering and design applications and for repetitive use will result from a document

FED SUP CLASS  
5935



**DETAIL A**

Design standard for use with MIL-C-28748/9

© Entire standard revised

P A Navy - EC	International Interests	TITLE INSERT(INSULATOR) RECTANGULAR CONNECTOR, POLARIZED CENTER SCREW- LOCK, ELECTRICAL, 10 (SIZE 16 CRIMP REMOVABLE) PIN CONTACTS	MILITARY STANDARD
Other: Cus AF - 85 Army - EL			MS 18155
Procurement Specification MIL-C-28748		SUPERSEDES	SHEET 1 OF 3

DD FORM 672  
1 SEP 63

(Coordinated) PREVIOUS EDITIONS OF THIS FORM ARE OBSOLETE

5935-2004-5

5935-2004-5

APPROVED 20 Dec 1965  
REVISED (A) 29 Jul 1968 (B) 20 May 1970 (C) 8 July 1976

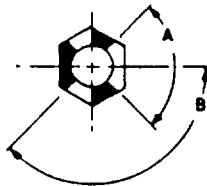
FED SUP CLASS  
5935TYPE  
SEE TABLE I

TABLE I		
TYPE	A	B
1	90°	135°
2	85°	137° 30'

User activities Army ME, AV, WC  
Navy MC  
Air Force

Reviewer activities Army MI, MU, AT  
Navy AS, SH, OS  
Air Force 11, 80  
DSA-ES

This military standard is approved for use by all Departments and Agencies of the Department of Defense. Selection for all new engineering and design applications and for repetitive use shall be made from this document.

TABLE II		
MS PART NUMBER	POLARIZATION *	JACKSCREW
MS 18155-1N	N (TYPE 1)	SUPPLIED WITH CONNECTOR
MS 18155-1V	V (TYPE 1)	
MS 18155-1W	W (TYPE 1)	
MS 18155-1X	X (TYPE 2)	
MS 18155-1Y	Y (TYPE 2)	
MS 18155-1Z	Z (TYPE 2)	
MS 18155-2N	N (TYPE 1)	NOT SUPPLIED WITH CONNECTOR POLARIZING BOSS THREADED INTERNALLY 138-32 UNC - 2B
MS 18155-2V	V (TYPE 1)	
MS 18155-2W	W (TYPE 1)	
MS 18155-2X	X (TYPE 2)	
MS 18155-2Y	Y (TYPE 2)	
MS 18155-2Z	Z (TYPE 2)	

TABLE III		
MS PART NUMBER	POLARIZATION *	GUIDE PIN
MS 18155-3N	N (TYPE 1)	SUPPLIED WITH CONNECTOR
MS 18155-3V	V (TYPE 1)	
MS 18155-3W	W (TYPE 1)	
MS 18155-3X	X (TYPE 2)	
MS 18155-3Y	Y (TYPE 2)	
MS 18155-3Z	Z (TYPE 2)	
MS 18155-4N	N (TYPE 1)	NOT SUPPLIED WITH CONNECTOR POLARIZING BOSS WITH 144 ± .002 I D TO ACCEPT GUIDE PIN
MS 18155-4V	V (TYPE 1)	
MS 18155-4W	W (TYPE 1)	
MS 18155-4X	X (TYPE 2)	
MS 18155-4Y	Y (TYPE 2)	
MS 18155-4Z	Z (TYPE 2)	

\* LARGE OPENING IN POLARIZATION BOSS MUST BE ADJACENT TO POLARIZATION LETTER ON CONNECTOR BODY.

P A Navy - EC	International Interests	TITLE INSERT (INSULATOR) RECTANGULAR CONNECTOR, POLARIZED CENTER SCREW-LOCK, ELECTRICAL, 10 (SIZE 16 CRIMP REMOVABLE) PIN CONTACTS	MILITARY STANDARD
Other Cust AF - 85 Army - EL			MS 18155
Procurement Specification MIL-C-28748		SUPERSEDES	SHEET 2 OF 3

DD FORM 1 SEP 63 672 (Coordinated) PREVIOUS EDITIONS OF THIS FORM ARE OBSOLETE

5935-2004-5

APPROVED 20 Dec 1965 REVISED © For changes see sheets 1, 2 and 3

FED SUP CLASS  
5935User activities  
Army ME, AV, WC  
Navy MC  
Air ForceReviewer activities  
Army MI, MU, AT  
Navy AS, SH, OS  
Air Force 11, 80  
DSA - ES

This military standard is to be used for use by all Departments and Agencies of the Department of Defense. Selection for all new engineering and design applications and for repetitive use.

INCHES	MM	INCHES	MM
001	03	287	7 29
002	05	300	7 62
005	13	312	7 92
006	15	340	8 64
010	25	375	9 53
057	1 45	470	11 94
094	2 39	570	14 48
130	3 30	579	14 71
138	3 51	590	14 99
149	3 78	838	21 29
156	3 96	956	24 28
218	5 54	1 070	27 18
225	5 72	1 300	33 02
250	6 35	1 520	38 61
285	7 24	1 675	42 55

## NOTES

1. Dimensions are in inches.
2. Unless otherwise specified, tolerance is  $\pm .015$  (.38 mm).
3. Metric equivalents (to the nearest .01 mm) are given for general information only and are based upon 1 inch = 25.4 mm
4. Tolerance between any two adjacent contact centers shall be  $\pm .004$  (.10 mm) Tolerance between any two contact centers, other than adjacent contacts, shall be  $\pm .006$  (.15 mm).
5. Contact hole details shall be in accordance with MIL-C-28748.
6. For mating connector see MS18156 (socket body).
7. Dimensions symmetrical about centerlines.
8. For design feature purposes, this standard takes precedence over procurement documents referenced herein.
9. Reference documents shall be of the issue in effect on date of invitation for bid
10. Insert material shall be in accordance with MIL-C-28748
11. Flatness, squareness and parallelism shall be within dimensional tolerances
12. Center polarizing hardware may be rotated by removing retaining ring and spacer or removing cap (left hand thread) at rear of insert
13. Maximum insertion and withdrawal force (connector assembly) shall be 9 pounds
14. Maximum torque required at jackscrew to properly engage or disengage connector shall be 1.5 inch pounds
15. Jackscrew wrench size 3 32 hex

P. Navy - EC

Interchangeable  
PartTITLE INSERT (INSULATOR) RECTANGULAR  
CONNECTOR POLARIZED CENTER SCREW-  
LOCK, ELECTRICAL 10 (SIZE 16 CRIMP  
REMOVABLE) PIN CONTACTS

MILITARY STANDARD

Drawing Code  
AF - 85

Army - EL

SUPERSEDES

MIL-C-28748

MS 18155

SHEET 3 OF 3

DD FORM 672  
1 SEP 63

(Unpublished) PREVIOUS EDITIONS OF THIS FORM ARE OBSOLETE

5935-2004-5

APPROVED 20 Dec 1965 REVISED © For changes see sheets 1, 2 and 3