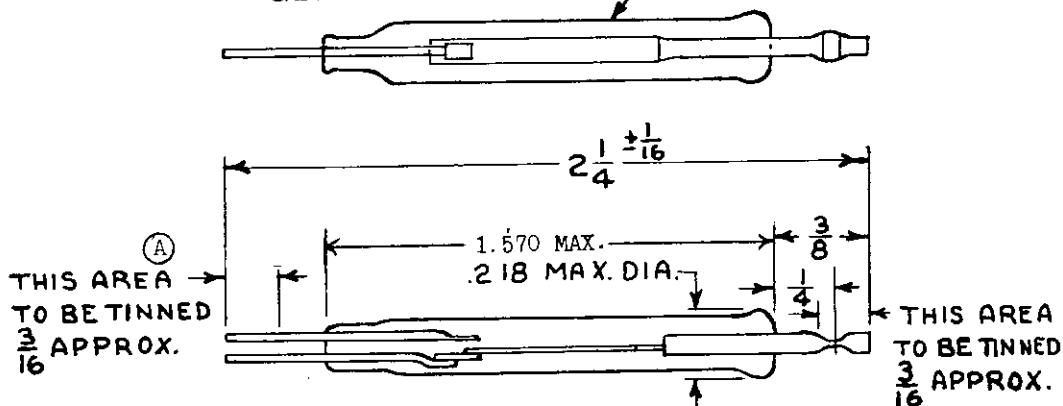


FED. SUP CLASS  
5930HERMETICALLY SEALED  
GLASS ENVELOPE

## REQUIREMENTS

## 1. CHARACTERISTICS:

Rating:

D.C. 250V, 20 W

A.C. 250V, 40 V.A.

Poles: Single - Double Throw

Contacts: Gold or rhodium plated.

Hermetically sealed in an inert atmosphere

Breakdown voltage: 500 V RMS 60 cycles

2. Contacts shall be actuated by an external magnetic field, which may be obtained from a permanent magnet, electromagnet or a combination of both.

3. Test: Two contact assemblies of each 1000 contact assemblies or fraction thereof furnished on each Government order or purchased by shipbuilding contractors for installations on ships shall be tested for 10,000 operations under rated load and voltage and shall withstand this test without failure of any part thereof.

Dimensions are in inches

Tolerances unless specified

Decimal dimensions  $\pm 0.005$ Fractional dimensions  $\pm 1/64$ 

(B) CANCELED AFTER 6 AUGUST 1986. NO SUPERSEDING STANDARD.

Part number

MS18112-1

Project 5930-N617

P.A. SH	TITLE	MILITARY STANDARD
Other Cust	CONTACT ASSEMBLY, ELECTRICAL, DRY REED TYPE S.P.D.T.	MS 18112(SHIPS)
Procurement Specification NONE	SUPERSEDES:	SHEET 1 OF 1

DD FORM 672N  
1 SEP 57LIMITED PREVIOUS EDITIONS OF THIS FORM ARE OBSOLETE.  
COORDINATION

This military standard is approved by the Naval Ship Engineering Center, Department of the Navy and is mandatory for use by that activity. All other military activities are required to employ this standard where suitable.

APPROVED 17 Dec 1963 REVISED (A) 29 Jan 1968 (B) 6 Aug 1986