

INCH-POUND

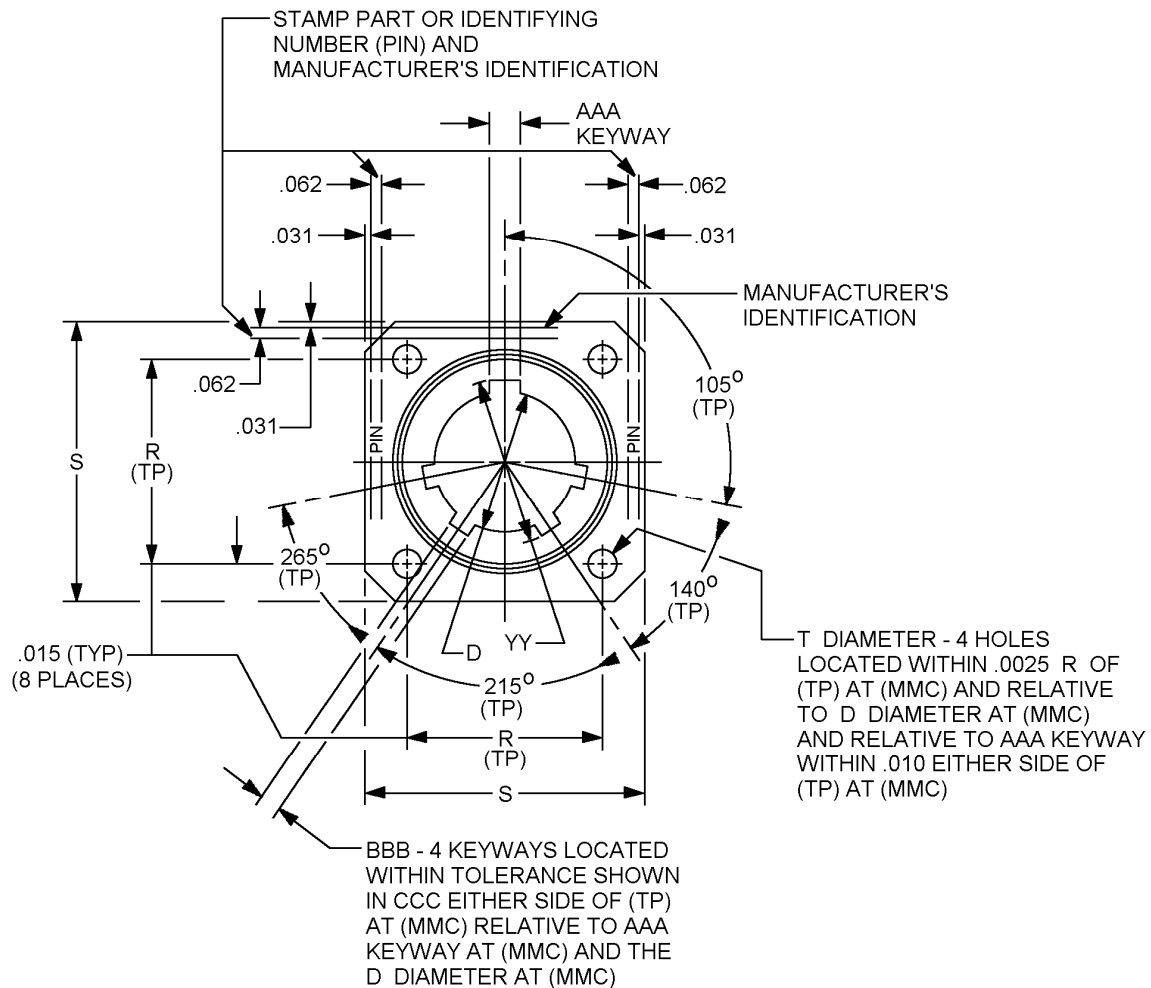
MS18062C  
 26 October 2005  
 SUPERSEDING  
 MS18062B  
 01 June 1966

## DETAIL SPECIFICATION SHEET

## CONNECTOR, RECEPTACLE, DUMMY STOWAGE

This specification is approved for use by all Departments  
 and Agencies of the Department of Defense

The requirements for acquiring the product described herein  
 shall consist of this specification sheet and MIL-DTL-22992.

FIGURE 1. Dimensions and configuration.

MS18062C

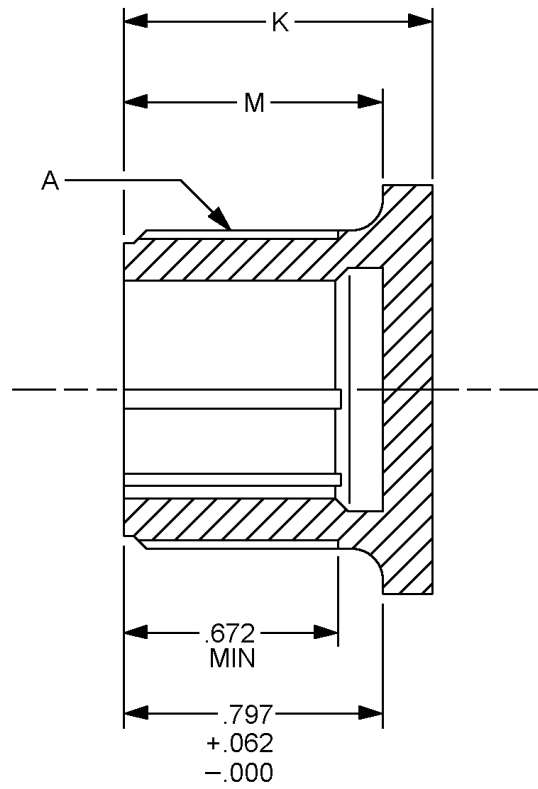


FIGURE 1. Dimensions and configuration - Continued.

## MS18062C

Size	A Thread (plated) Class 2a	D dia. + .005 - .010	K + .021 - .010	M + .010 - .000	R (TP)
12	0.8750-0.1P-0.2L-DS	.567	.938	.797	.906
14	1.0000-0.1P-0.2L-DS	.692			.969
16	1.1250-0.1P-0.2L-DS	.817			1.062
18	1.2500-0.1P-0.2L-DS	.942	.953		1.156
20	1.3750-0.1P-0.2L-DS	1.068			1.250
22	1.5000-0.1P-0.2L-DS	1.192			1.375
24	1.7500-0.1P-0.2L-DS	1.317	1.047	.859	1.562
28	2.0000-0.1P-0.2L-DS	1.536			1.750
32	2.2500-0.1P-0.2L-DS	1.786	1.110	.922	1.938
36	2.5000-0.1P-0.2L-DS	2.005			2.188
40	2.7500-0.1P-0.2L-DS	2.255			

Size	S + .021 - .020	T dia ± .005	YY dia + .010 - .006	AAA	BBB	CCC
12	1.188	.150	.647	.126 -.001, +.007	+.007 .063 -.001	.0035
14	1.281		.772		+.007 .063 -.001	
16	1.375		.897	.182 -.001, +.010	+.010 .108 -.001	.0070
18	1.500	.177	1.022			
20	1.625		1.148			
22	1.750		1.272		+.010 .108 -.001	
24	2.000		1.473	.260 -.001, +.010	+.010 .155 -.001	
28	2.250	.209	1.692			
32	2.500		1.942			
36	2.750		2.161			
40	3.000		2.411		+.010 .155 -.001	

FIGURE 1. Dimensions and configuration - Continued.

## MS18062C

Inches	mm	Inches	mm	Inches	mm	Inches	mm
0.001	0.0254	0.692	17.577	1.156	29.362	2.005	50.93
0.0035	0.089	0.772	19.609	1.188	30.175	2.161	54.89
0.005	0.127	0.797	20.244	1.192	30.277	2.188	55.575
0.006	0.152	0.817	20.752	1.250	31.75	2.250	57.15
0.0070	0.178	0.859	21.819	1.272	32.309	2.255	57.277
0.010	0.254	0.8750	22.225	1.281	32.537	2.375	60.325
0.016	0.406	0.897	22.784	1.317	33.452	2.411	61.239
0.020	0.508	0.906	23.012	1.375	34.925	2.500	63.50
0.021	0.533	0.922	23.419	1.473	37.414	2.750	69.85
0.031	0.787	0.938	23.825	1.500	38.10	3.000	76.20
0.062	1.575	0.942	23.927	1.536	39.014		
0.063	1.600	0.953	24.206	1.562	39.675		
0.108	2.743	0.969	24.613	1.625	41.275		
0.126	3.200	1.0000	25.4	1.692	42.977		
0.150	3.81	1.022	25.959	1.750	44.45		
0.155	3.94	1.047	26.594	1.786	45.364		
0.177	4.496	1.062	26.975	1.938	49.225		
0.182	4.623	1.068	27.127	1.942	49.327		
0.209	5.31	1.110	28.194	2.000	50.80		
0.260	6.604	1.1250	28.575				
0.567	14.402	1.148	29.159				
0.647	16.434						
0.672	17.069						

## NOTES:

1. All dimensions are in inches.
2. Unless otherwise specified tolerances are  $\pm .016$  inch (0.41 mm).

FIGURE 1. Dimensions and configuration - Continued.

## MS18062C

## REQUIREMENTS:

Design and construction, see figure 1.

Mates with plugs shown on MS17344.

Shell finish shall be designated by the letter C (conductive) or N (nonconductive).

PIN example:

	<u>MS18062</u>	<u>N</u>	<u>28</u>
MS number			
Finish			
Size			

Changes from previous issue. Marginal notations are not used in this revision to identify changes with respect to the previous issue due to the extent of the changes.

Referenced documents. In addition to MIL-DTL-22992, this document references the following:

MS17344

## CONCLUDING MATERIAL

## Custodians:

Army – CR  
Navy – EC  
Air Force – 11  
DLA – CC

## Preparing activity:

DLA – CC

## Review activities:

Army – AV, MI  
Navy – AS, CG, MC, OS, SH  
Air Force – 19

(Project 5935–4719–011)

NOTE: The activities listed above were interested in this document as of the date of this document. Since organizations and responsibilities can change, you should verify the currency of the information above using the ASSIST Online database at <http://assist.daps.dla.mil>.