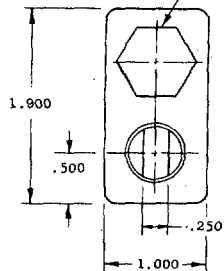


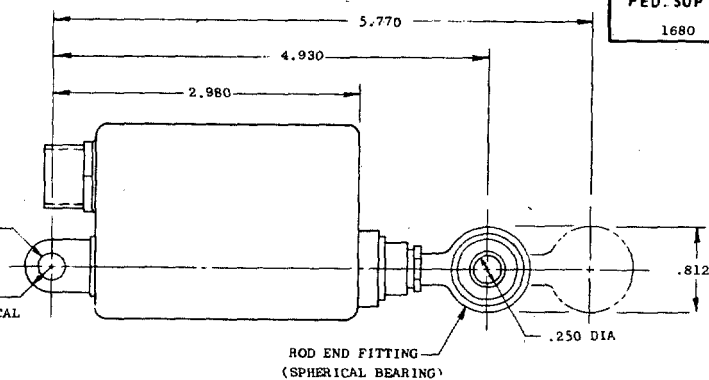
FED. SUP CLASS 1680																				
NUT, AN3068-3, 1/2-28, UNEF-2B WASHER, NYLON, 5/8 O.D., 7/16 ± .0, 1/32 THICK																				
CABLE ASSEMBLY .4375 .251 DIA .250 SPHERICAL RADIUS 1/4-28NF-2A-THD																				
CONNECTOR MS 3137-P-7P																				
NAME PLATE (LOCATION OPTIONAL) 10.000 .750 (MIN) WIRING DIAGRAM PLATE (LOCATION OPTIONAL)																				
MS 18037-1																				
SWITCH CLOSED IN EXTENDED POSITION 7 7 5 5 1 1 3 3 2 2 4 4 6 6 +28V DC SWITCH CLOSED IN RETRACTED POSITION RADIO INTERFERENCE FILTER																				
WIRING DIAGRAM MS 18037-1 SEE NOTE 1 THIS SHEET																				
NOTES: 1. ON WIRING DIAGRAM: SOLID LINES SHOW INTERNAL WIRING, DASHED LINES SHOW TYPICAL EXTERNAL WIRING. 2. ENVELOPE DIMENSIONS SHOWN ARE MAXIMUM ALLOWABLE. 3. DIMENSIONS IN INCHES, UNLESS OTHERWISE SPECIFIED, TOLERANCES: DECIMALS ± .005. 4. OVERTRAVEL SHALL NOT EXCEED .020 INCH. 5. VIBRATION TEST SHALL BE IN ACCORDANCE WITH THE "VIBRATION TEST" AND "RESONANCE VIBRATION" OF MIL-T-7743 WITH ACTUATOR MOUNTED ON SUSPENSION EQUIPMENT CARRYING 100 POUND AND 1000 POUND STORES RESPECTIVELY. 6. FOR THE SHOCK TEST THE ACTUATOR SHALL BE MOUNTED ON SUSPENSION EQUIPMENT CARRYING 100 POUND AND 1000 POUND STORES RESPECTIVELY.																				
<table border="1" style="width: 100%; border-collapse: collapse;"> <thead> <tr> <th rowspan="2">MS DASH NO.</th> <th rowspan="2">RATE IN/SEC</th> <th colspan="3">LOAD/CURRENT (MAX)</th> <th rowspan="2">WT OZ MAX</th> <th rowspan="2">FULL RATED STROKE (MECH)</th> <th rowspan="2">FULL RATED STROKE (ELECT)</th> </tr> <tr> <th>RATED</th> <th>MAXIMUM</th> <th>STALL</th> </tr> </thead> <tbody> <tr> <td>-1</td> <td>0.25 ± 20%</td> <td>20 LB/0.25 AMP</td> <td>50 LB/0.40 AMP</td> <td>120 LB/1.0 AMP</td> <td>8.5</td> <td>1.0 ± .005</td> <td>.88</td> </tr> </tbody> </table>		MS DASH NO.	RATE IN/SEC	LOAD/CURRENT (MAX)			WT OZ MAX	FULL RATED STROKE (MECH)	FULL RATED STROKE (ELECT)	RATED	MAXIMUM	STALL	-1	0.25 ± 20%	20 LB/0.25 AMP	50 LB/0.40 AMP	120 LB/1.0 AMP	8.5	1.0 ± .005	.88
MS DASH NO.	RATE IN/SEC			LOAD/CURRENT (MAX)						WT OZ MAX	FULL RATED STROKE (MECH)	FULL RATED STROKE (ELECT)								
		RATED	MAXIMUM	STALL																
-1	0.25 ± 20%	20 LB/0.25 AMP	50 LB/0.40 AMP	120 LB/1.0 AMP	8.5	1.0 ± .005	.88													
REFERENCED DOCUMENTS SHALL BE OF THE ISSUE IN EFFECT ON DATE OF INVITATIONS FOR BID. FOR DESIGN FEATURE PURPOSES, THIS STANDARD TAKES PRECEDENCE OVER PROCUREMENT DOCUMENTS REFERENCED HEREIN.																				
(B) ADDED SHEET 3																				
P.A. Weps Other Cust																				
TITLE ACTUATOR, AIRCRAFT, ELECTRO-MECHANICAL, LINEAR, DIRECT CURRENT																				
MILITARY STANDARD MS 18037(Wep)																				
PROCUREMENT SPECIFICATION MIL-A-23922																				
SUPERSEDES:																				
SHEET 1 OF 3																				

This standard has been approved by the Bureau of Naval Weapons, Department of the Navy and is mandatory for use by that activity. All other military activities are required to employ this standard where suitable.

CONNECTOR TO MATE
WITH MS 3116-P-8-4S



.251 DIA
.250
SPHERICAL
RADIUS



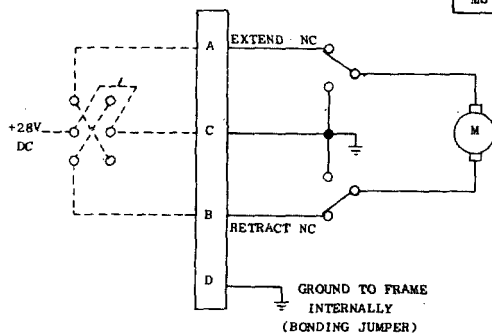
ROD END FITTING
(SPHERICAL BEARING)

NAME PLATE
(LOCATION OPTIONAL)



WIRING DIAGRAM PLATE
(LOCATION OPTIONAL)

MS 18037-2



WIRING DIAGRAM MS 18037-2
SEE NOTE 1 THIS SHEET

NOTES:

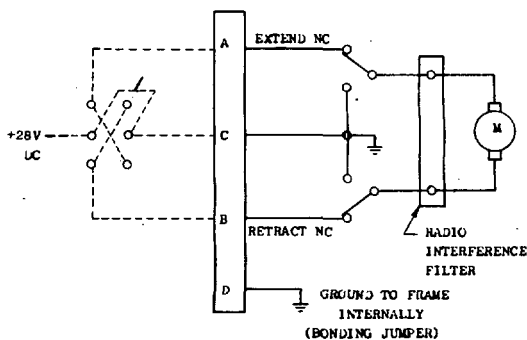
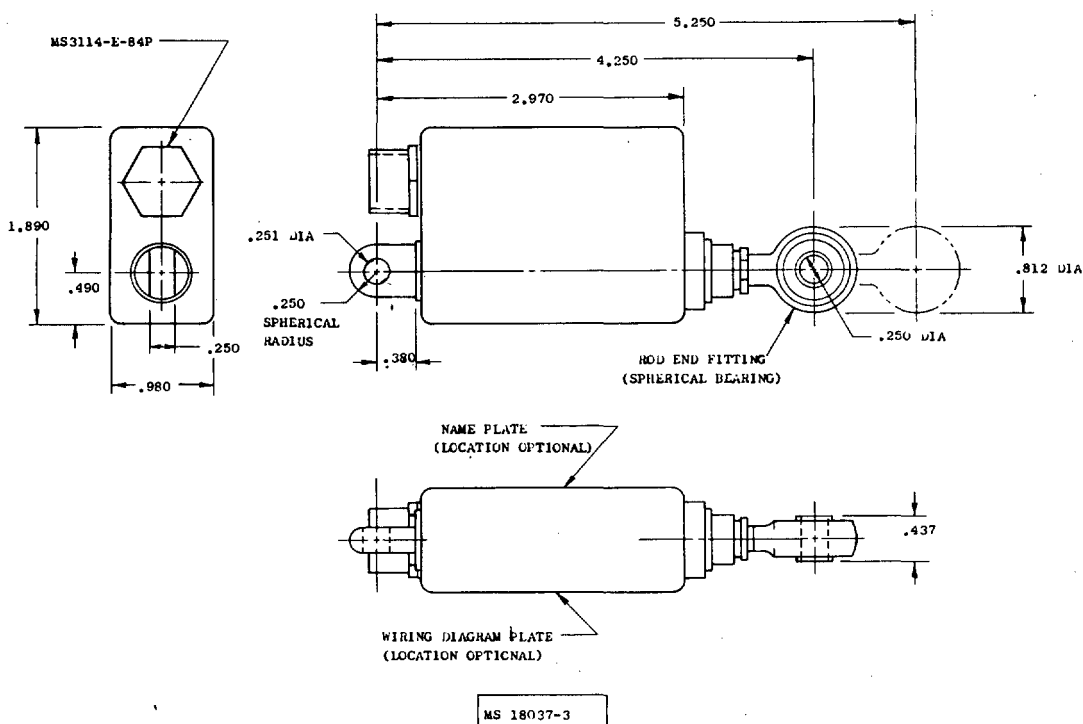
1. ON WIRING DIAGRAM: SOLID LINES SHOW INTERNAL WIRING, DASHED LINES SHOW TYPICAL EXTERNAL WIRING.
2. ENVELOPE DIMENSIONS SHOWN ARE MAXIMUM ALLOWABLE.
3. DIMENSIONS IN INCHES. UNLESS OTHERWISE SPECIFIED, TOLERANCES: DECIMALS $\pm .005$.
4. OVERTRAVEL SHALL NOT EXCEED .020 INCH.
5. VIBRATION TEST SHALL BE IN ACCORDANCE WITH THE "VIBRATION TEST" AND "RESONANCE VIBRATION" OF MIL-T-7743 WITH ACTUATOR MOUNTED ON SUSPENSION EQUIPMENT CARRYING 100 POUND AND 1000 POUND STORES RESPECTIVELY.
6. FOR THE SHOCK TEST THE ACTUATOR SHALL BE MOUNTED ON SUSPENSION EQUIPMENT CARRYING 100 POUND AND 1000 POUND STORES RESPECTIVELY.

MS DASH NO.	RATE IN/SEC	LOAD/CURRENT (MAX)			WT. OZ MAX	FULL RATED STROKE (MECH)	FULL RATED STROKE (ELECT)
		RATED	MAXIMUM	STALL			
-2	0.12 \pm 20%	40 LB/0.25 AMP	100 LB/0.50 AMP	250 LB/1.0 AMP	8.5	1.0 \pm .010	.84

REFERENCED DOCUMENTS SHALL BE OF THE ISSUE IN EFFECT ON DATE OF INVITATIONS FOR BID.
FOR DESIGN FEATURE PURPOSES, THIS STANDARD TAKES PRECEDENCE OVER PROCUREMENT DOCUMENTS REFERENCED HEREIN.

APPROVED 29 March 1963 REVISED A 6 June 1963 B SEE SHEET 3 C 1 FEBRUARY 1964

P.A. Weps Other Cust	TITLE ACTUATOR, AIRCRAFT, ELECTRO-MECHANICAL, LINEAR, DIRECT CURRENT	MILITARY STANDARD MS 18037 (Wep)
PROCUREMENT SPECIFICATION MIL-A-23622	SUPERSEDES:	SHEET 2

FED. SUP CLASS
1680

WIRING DIAGRAM MS 18037-3
SEE NOTE 1 THIS SHEET

NOTES:

1. ON WIRING DIAGRAM: SOLID LINES SHOW INTERNAL WIRING, DASHED LINES SHOW TYPICAL EXTERNAL WIRING.
2. ENVELOPE DIMENSIONS SHOWN ARE MAXIMUM ALLOWABLE.
3. DIMENSIONS IN INCHES, UNLESS OTHERWISE SPECIFIED, TOLERANCES: DECIMALS $\pm .005$.
4. OVERTRAVEL SHALL NOT EXCEED .020 INCH.
5. VIBRATION TEST SHALL BE IN ACCORDANCE WITH THE "VIBRATION TEST" AND "RESONANCE VIBRATION" OF MIL-T-7743 WITH ACTUATOR MOUNTED ON SUSPENSION EQUIPMENT CARRYING 100 POUND AND 1000 POUND STORES RESPECTIVELY.
6. FOR THE SHOCK TEST THE ACTUATOR SHALL BE MOUNTED ON SUSPENSION EQUIPMENT CARRYING 100 POUND AND 1000 POUND STORES RESPECTIVELY.
7. STROKE IS NOT ADJUSTABLE.

MS DASH NO	RATE	LOAD/CURRENT (MAX)			WT OZ MAX	FULL RATED STROKE (MECH)	FULL RATED STROKE (ELECT)
		RATED	MAXIMUM	STALL			
-3	0.12 \pm 20%	40 LB/0.25 AMP	100 LB/0.50 AMP	250 LB/1.0 AMP	8.5	1.0	1.00

REFERENCED DOCUMENTS SHALL BE OF THE ISSUE IN EFFECT ON DATE OF INVITATIONS FOR BID.
FOR DESIGN FEATURE PURPOSES, THIS STANDARD TAKES PRECEDENCE OVER PROCUREMENT DOCUMENTS REFERENCED HEREIN.

This standard has been approved by the Bureau of Naval Weapons Department of the Navy, and is mandatory for use by that activity. All other military activities are required to employ this standard where suitable.

P.A. Weps Other Cust	TITLE ACTUATOR, AIRCRAFT, ELECTRO-MECHANICAL, LINEAR, DIRECT CURRENT	MILITARY STANDARD MS 18037 (Wep)
PROCUREMENT SPECIFICATION MIL-A-23622	SUPERSEDES:	SHEET 3 OF

DD FORM 672-1 (Limited coordination)

PREVIOUS EDITIONS OF THIS FORM ARE OBSOLETE.

APPROVED 29 March 1963
REVISED
B 27 June 1963
C 1 February 1964