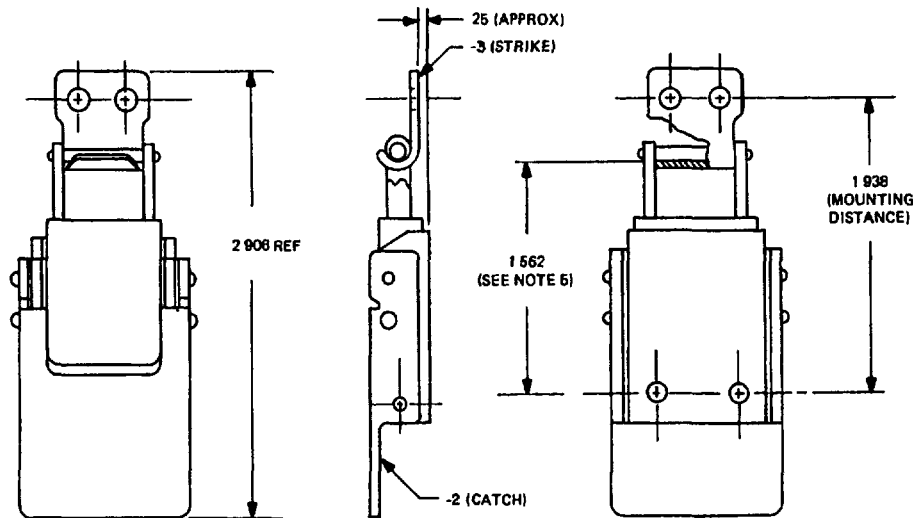


NOTICE - REVIEW/USER INFORMATION IS CURRENT AS OF DATE OF THIS DOCUMENT. FOR FUTURE COORDINATION OF CHANGES TO THIS DOCUMENT, DRAFT CIRCULATION SHOULD BE BASED ON THE INFORMATION IN THE CURRENT FEDERAL SUPPLY CLASSIFICATION LISTING OF DOD STANDARDIZATION DOCUMENTS.

USER INTEREST
ARMY - EL, GL
NAVY -

REVIEWER INTEREST
ARMY - MU
NAVY - AS
DSA - IS

This military standard is approved by the Department of Defense and is mandatory for use by all Departments & Agencies of the Department of Defense. Selection for all new engineering and design applications and for repetitive use shall be made from this document.



-1 CATCH CLAMPING (CATCH AND STRIKE ASSEMBLY)

PART NO	PART IDENTIFICATION
MS 18015-1	CATCH, CLAMPING (CATCH AND STRIKE ASSEMBLY)
MS 18015-2	CATCH, CLAMPING (WITHOUT STRIKE)
MS 18015-3	STRIKE, CATCH

NOTES

- MATERIAL (A) YOKE, SPRING HOUSING CORROSION RESISTING STEEL per QQ-S-706 Class 302, Cond B
(B) SPRINGS, WIRE, SPRING per QQ W-412 & QQ W-428, QQ-W-470 (SPRINGS CONCEALED)
(C) ALL REMAINING PARTS, CARBON STEEL per QQ-S-698
- FINISH CARBON STEEL PARTS, CADMIUM PLATE, QQ P-416, TYPE 2, CLASS 2
- REMOVE ALL BURRS AND BREAK ALL SHARP EDGES
- DIMENSIONS IN INCHES UNLESS OTHERWISE SPECIFIED, TOLERANCE \pm 0.015
- TENSION STANDARD SPRING TENSION WITH 1/8 DEFLECTION TO 1 562 DIMENSION = 70 POUNDS
- THIS ASSEMBLY IS MADE FOR USE ON CONTAINERS WITH OVERLAPING EDGES. CONTAINERS WITH EVEN MATING EDGES REQUIRE THE USE OF SHIMS
- ULTIMATE STRENGTH 300 LB FOR STRIKE, 600 LBS FOR CATCH

FOR DESIGN FEATURE PURPOSES, THIS STANDARD TAKES PRECEDENCE OVER PROCUREMENT DOCUMENTS REFERENCED HEREIN. REFERENCED DOCUMENTS SHALL BE OF THE ISSUE IN EFFECT ON DATE OF INVITATIONS FOR BID.

(B) ENTIRE STANDARD REVISED AND REDRAWN

P.A. NAVY - OS Other Code ARMY - WC AF -	TITLE CATCH, CLAMPING AND STRIKE (CONCEALED SPRING TYPE)	MILITARY STANDARD MS 18015
PROCUREMENT SPECIFICATION NONE	SUPSEDES BUWEPs DWG NO 2264300	SHEET 1 OF 2

DD FORM 672-1 (Coordinated)

PREVIOUS EDITIONS OF THIS FORM ARE OBSOLETE.

W106

PLATE NO 17710

APPROVED 23 JAN 63 REVISED (A) 19 APRIL 1968 (B) 19 OCTOBER 1972

REVIEW/USER INFORMATION IS CURRENT AS OF DATE OF THIS DOCUMENT FOR FUTURE COORDINATION OF CHANGES TO THIS DOCUMENT. DRAFT CIRCULATION SHOULD BE BASED ON THE INFORMATION IN THE CURRENT FEDERAL SUPPLY CLASSIFICATION LISTING OF DOD STANDARDIZATION DOCUMENTS

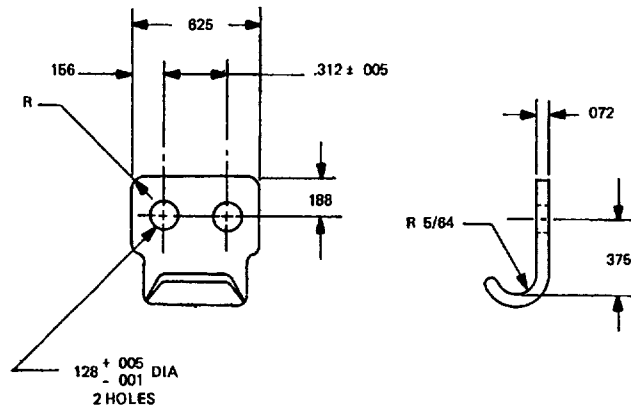
NOTICE -

USER INTEREST

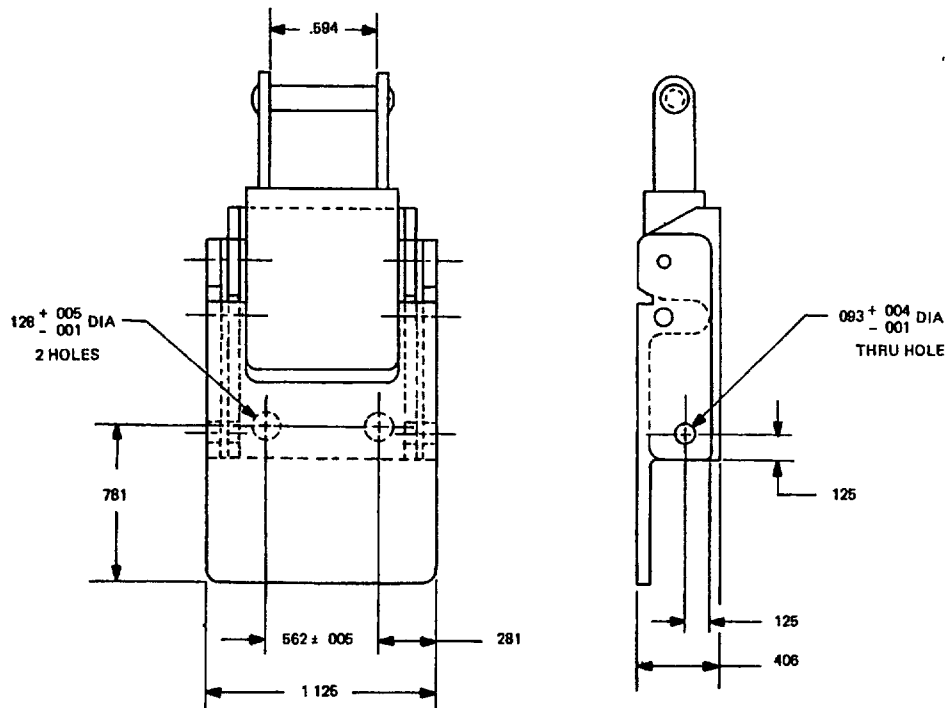
REVIEWER INTEREST

This military standard is approved by the Department of Defense and is mandatory for use by all Departments & Agencies of the Department of Defense. Selection for all new engineering and design applications and for repetitive use shall be made from this document.

FED SUP CLASS
5340



-3 STRIKE



-2 CATCH

APPROVED 23 JAN 63 REVISED (A) (B) FOR CHANGES SEE SHEETS 1 AND 2

P.A. NAVY - OS Other Cost ARMY - WC AF -	TITLE CATCH, CLAMPING AND STRIKE (CONCEALED SPRING TYPE)	MILITARY STANDARD MS18015
PROCUREMENT SPECIFICATION NONE	SUPERSEDES BUWEP DWG NO 2264300	SHEET 2

DD FORM 672-1 (Coordinated)

PREVIOUS EDITIONS OF THIS FORM ARE OBSOLETE.

W105

PLATE NO 17710

SPECIFICATION ANALYSIS SHEET		Form Approved Budget Bureau No 22-R255
INSTRUCTIONS: This sheet is to be filled out by personnel, either Government or contractor, involved in the use of the specification in procurement of products for ultimate use by the Department of Defense. This sheet is provided for obtaining information on the use of this specification which will insure that suitable products can be procured with a minimum amount of delay and at the least cost. Comments and the return of this form will be appreciated. Fold on lines on reverse side, staple in corner, and send to preparing activity. Comments and suggestions submitted on this form do not constitute or imply authorization to waive any portion of the referenced document(s) or serve to amend contractual requirements.		
SPECIFICATION MS 18015 Catch, Clamping and Strike (Concealed Spring Type)		
ORGANIZATION		
CITY AND STATE	CONTRACT NUMBER	
MATERIAL PROCURED UNDER A <input type="checkbox"/> DIRECT GOVERNMENT CONTRACT <input type="checkbox"/> SUBCONTRACT		
1. HAS ANY PART OF THE SPECIFICATION CREATED PROBLEMS OR REQUIRED INTERPRETATION IN PROCUREMENT USE? A. GIVE PARAGRAPH NUMBER AND WORDING.		
B. RECOMMENDATIONS FOR CORRECTING THE DEFICIENCIES		
2. COMMENTS ON ANY SPECIFICATION REQUIREMENT CONSIDERED TOO RIGID		
3. IS THE SPECIFICATION RESTRICTIVE? <input type="checkbox"/> YES <input type="checkbox"/> NO (If "yes", in what way?)		
4. REMARKS (Attach any pertinent data which may be of use in improving this specification. If there are additional papers, attach to form and place both in an envelope addressed to preparing activity)		
SUBMITTED BY (Printed or typed name and activity - Optional)		DATE

DD FORM 1426
1 JAN 66

REPLACES EDITION OF 1 OCT 64 WHICH MAY BE USED.

S/N-0102-014-1801 C-25254

FOLD

POSTAGE AND FEES PA

OFFICIAL BUSINESS

Commanding Officer
Naval Ordnance Station
Standardization Division (QA3)
Indian Head, MD 20640

FOLD