

FED SUP 3140

CONTENTS LABEL
MS18021-1
SEE NOTE 9

HUMIDITY INDICATOR, MS18018-1

SEAL, MS18018-1
2 REQ, SEE NOTE 8

DECALCOMANIA, MS18017-1
SEE NOTE 1

5.250

OF SIZE 6

SEE NOTE 5

FIBERBOARD BOX,
MS18023-1

.500 ±.250 TYP

SEAL, MS18018-1,
R&P, SEE NOTE 8

PRESSURE EQUALIZING VALVE,
MS18014-1

SHIPPING TAG,
MS18024-1
SEE NOTES 7, 10, AND 11

ENVELOPE, MS18022-1
RETURN LABELS, MS18025-1, 4 REQD
SEE NOTES 3, 5, AND 6

INSTRUCTION LABEL,
MS18020-1

SEE NOTE 2

1.000 ±.250 TYP

3.75

CUSHION, MS18019-1, 2 REQD

CUSHION, MS18019-2

CONTAINER, MS18026-1

6.375

MS PART NO
MS18011-1

NOTES

1. DECALCOMANIA (MS18017-1) TO BE CENTRALLY LOCATED, AS SHOWN.
2. SECURE TOP CUSHIONS (MS18019-1) TO COVER WITH E B FULLER ADHESIVE NO 5621 OR EQUIVALENT
3. RETURN LABELS (MS18025-1) SHALL BE IN STRIP FORM INSERT INTO ENVELOPE (MS18022-1), FOLD END FLAP AND PLACE IN BOX (MS18023-1).
4. DESICCANT SHALL BE IN ACCORDANCE WITH SPECIFICATION MIL-D-3464, AND SHALL BE PLACED IN CONTAINER AT TIME OF PACKAGING COMPONENT QUANTITY AND METHOD OF SECURING SHALL BE IN ACCORDANCE WITH SPECIFICATION MIL-P-116.
5. BEFORE INSERTING COMPONENT IN BOX, REMOVE ENVELOPE CONTAINING LABELS PLACE COMPONENT IN BOX, WITH NECESSARY BLOCKING AND BRACING IN ACCORDANCE WITH CONTRACT PACKAGING PLAN SUPPLEMENT SEAL BOX WITH ONE STRIP OF TAPE, SPECIFICATION PPP-T-76, OVER CENTER SEAM ONLY TAPE SHALL EXTEND OVER ENDS OF BOX 1/2 INCH MINIMUM
6. PLACE ENVELOPE (WITH LABELS) FLAP DOWN ON TOP OF SEALED BOX SECURE WITH TAPE SPECIFICATION PPP-T-60, TYPE III, CLASS 2, ALONG CENTER SEAM ONLY
7. MARKING SHALL BE IN ACCORDANCE WITH STANDARD MIL-STD-129, AND SHALL BE CONFINED TO SHIPPING TAG (MS18024-1). DO NOT MARK ON CONTAINER.
8. SEALS (MS18018-1) TO BE LOCATED ON DIAGONALLY OPPOSITE CORNER LATCHES, AS SHOWN
9. CONTENTS LABEL (MS18021-1) SHALL BE PLACED ON TOP SURFACE OF CONTAINER, AS SHOWN
10. SHIPPING TAG SHALL BE LOCATED AS SHOWN ATTACHED BY THREADING WIRE THRU HOLES PROVIDED FOR SEALS
11. IF OVERPACKED TO SHIP MORE THAN ONE CONTAINER AT A TIME, THE SHIPPING DATA WILL BE PLACED ON THE OUTSIDE OF THE OVERPACK SHIPPING CONTAINER AND NO TAG IS REQUIRED
12. APPROXIMATE CUBAGE = 0.10 CUBIC FEET
13. DIMENSIONS IN INCHES
14. REFERENCED DOCUMENTS SHALL BE OF THE ISSUE IN EFFECT ON DATE OF INVITATIONS FOR BID
15. FOR DESIGN FEATURE PURPOSES THIS STANDARD TAKES PRECEDENCE OVER PREVIOUS AND DOCUMENTS REFERENCED HEREIN

(A) FOR CHANGES SEE SHEETS 7, 8, 16

P A NAVY-UP		MILITARY STANDARD	
Other Cont		MS18011(W P)	
PROCUREMENT SPECIFICATION		SHEET 1 OF 28	
SUPERSEDES			
DRAFT NO 2105001			

DD FORM 672-1

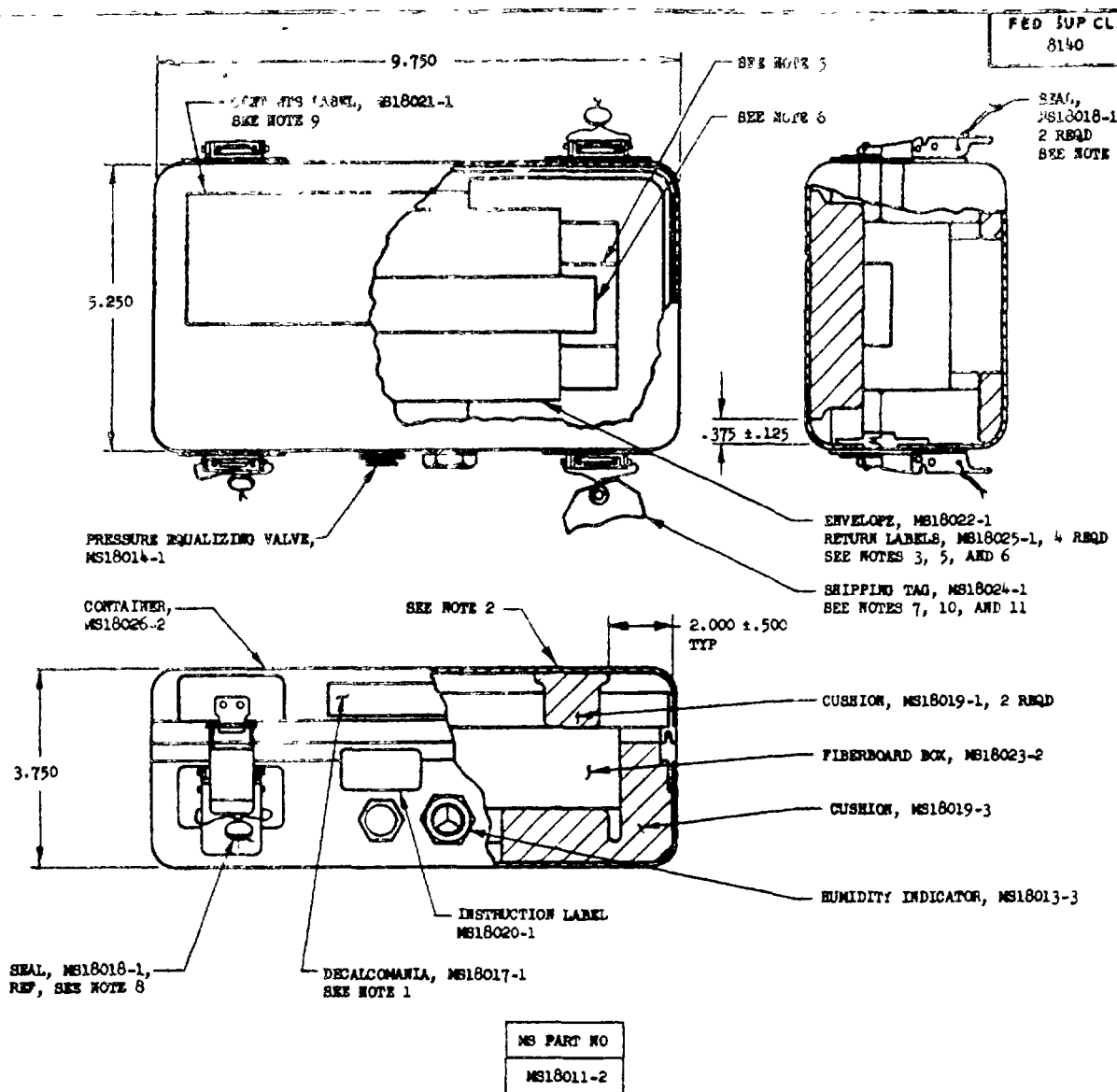
REVISED 21 Jan 67 (A) 11 April 1966

4-027

When drawings, specifications, or other data are used for any purpose other than in connection with a definitely related Government procurement operation the United States Government hereby incurs no responsibility for any misinterpretation, omission, or error, and the fact that the Government may have furnished, or in any way supplied the said drawings, specifications or other data, it is not to be regarded as an endorsement or approval of the holder of any other person or corporation or conveying any right of permission to manufacture or sell any product or article that may in any way be related thereto.

any activities are required to comply with standard terms available

NOTES: 1. When Government drawings, specifications, or other documents are used for any purpose other than in connection with a definitely related Government procurement operation, the United States Government thereby incurs no responsibility and the fact that the Government may have furnished such documents in any way applied to the said drawings, specifications, or other documents shall not be regarded as an implication or otherwise as in any manner licensing the holder, or any other person or corporation, or conveying any rights or permission to manufacture, use, or sell any patented invention that may in any way be related thereto.



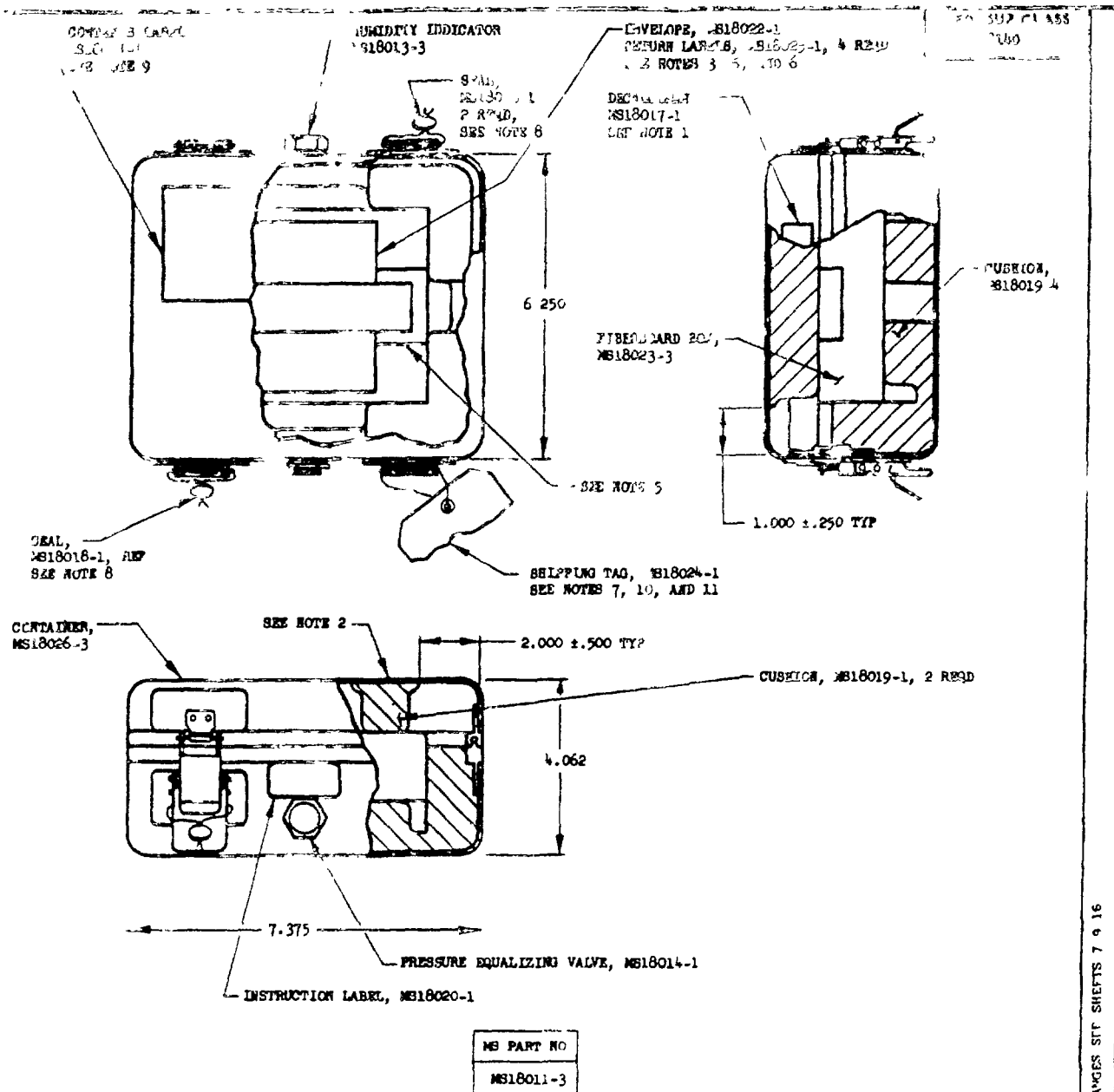
NOTES:

1. DECALCOMANIA (MS18017-1) TO BE CENTRALLY LOCATED, AS SHOWN
2. SECURE TOP CUSHIONS (MS18019-1) TO COVER WITH N B FULLER ADHESIVE NO 5621 OR EQUIVALENT
3. RETURN LABELS (MS18025-1) SHALL BE IN STRIP FORM INSERT INTO ENVELOPE (MS18022-1), FOLD END FLAP AND PLACE IN BOX (MS18023-2)
4. DESICCANT SHALL BE IN ACCORDANCE WITH SPECIFICATION MIL-D-3464, AND SHALL BE PLACED IN CONTAINER AT TIME OF PACKAGING COMPONENT. QUANTITY AND METHOD OF SECURING SHALL BE IN ACCORDANCE WITH SPECIFICATION MIL-P-116
5. BEFORE INSERTING COMPONENT IN BOX, REMOVE ENVELOPE CONTAINING LABELS. PLACE COMPONENT IN BOX, WITH NECESSARY BLOCKING AND BRACING IN ACCORDANCE WITH CONTRACT PACKAGING PLAN SUPPLEMENT. SEAL BOX WITH ONE STRIP OF TAPE, SPECIFICATION PFF-T-76, OVER CENTER SEAM ONLY. TAPE SHALL EXTEND OVER ENDS OF BOX 1/2 INCH MINIMUM
6. PLACE ENVELOPE (WITH LABELS) FLAP DOWN ON TOP OF SEALED BOX. SECURE WITH TAPE SPECIFICATION PFF-T-60, TYPE III, CLASS 2, ALONG CENTER SEAM ONLY
7. MARKING SHALL BE IN ACCORDANCE WITH STANDARD MIL-STD-129, AND SHALL BE CONFINED TO SHIPPING TAG (MS18024-1). DO NOT MARK ON CONTAINER.
8. SEALS (MS18018-1) TO BE LOCATED ON DIAGONALLY OPPOSITE CORNER LATCHES, AS SHOWN.
9. CONTENTS LABEL (MS18021-1) SHALL BE PLACED ON TOP SURFACE OF CONTAINER, AS SHOWN
10. SHIPPING TAG SHALL BE LOCATED AS SHOWN. ATTACH BY THREADING WIRE THRU HOLES PROVIDED FOR SEALS
11. IF OVERPACKED TO SHIP MORE THAN ONE CONTAINER AT A TIME, THE SHIPPING DATA WILL BE PLACED ON THE OUTSIDE OF THE OVERPACK. SHIPPING CONTAINER AND NO TAG IS REQUIRED.
12. APPROXIMATE CUBAGE = 0.13 CUBIC FEET
13. DIMENSIONS IN INCHES
14. REFERENCED DOCUMENTS SHALL BE OF THE ISSUE IN EFFECT ON DATE OF INVITATIONS FOR BID
15. FOR DESIGN FEATURE PURPOSES, THIS STANDARD TAKES PRECEDENCE OVER PROCUREMENT DOCUMENTS REFERENCED HEREIN.

P.A. NAVY-1P	TITLE	MILITARY STANDARD
Other Cont	CONTAINERS, REUSABLE, ALUMINUM, HAND PORTABLE - ASSEMBLY FOR SHIPPING	MS18011(WP)
PROCUREMENT SPECIFICATION 30.2.	SUPERSEDES FORM 30. 2184906	SHEET 2 OF

PROVED 23 Jan 73. REVISED (A) FOR CHANGES SEE SHEETS 7.9.16

operation in the United States. Government property must be returned to the Government in accordance with the instructions on the label. The Government may have furnished the label, or it may have supplied the label and drawings specifications or other data is not to be regarded by implication or otherwise as in any manner licensing the use of the label, or in any way conveying any rights or permission to manufacture or use in any way the label or other data.



NOTES

1. DECALCUMARIA (MS18017-1) TO BE CENTRALLY LOCATED, AS SHOWN
2. SECURE TOP CUSHIONS (MS18019-1) TO COVER WITH H B FULLER ADHESIVE NO 5621 OR EQUIVALENT
3. RETURN LABELS (MS18025-1) SHALL BE IN STRIP FORM INSERT INTO ENVELOPE (MS18022-1), FOLD END FLAP AND PLACE IN BOX (MS18023-3)
4. DESICCANT SHALL BE IN ACCORDANCE WITH SPECIFICATION MIL-D-3464, AND SHALL BE PLACED IN CONTAINER AT TIME OF PACKAGING COMPONENT QUANTITY AND METHOD OF SECURING SHALL BE IN ACCORDANCE WITH SPECIFICATION MIL-P-116
5. BEFORE INSERTING COMPONENT IN BOX, REMOVE ENVELOPE CONTAINING LABELS PLACE COMPONENT IN BOX, WITH NECESSARY BLOCKING AND BRACING IN ACCORDANCE WITH CONTRACT PACKAGING PLAN SUPPLEMENT SEAL BOX WITH ONE STRIP OF TAPE, SPECIFICATION PPP-T-76, OVER CENTER SEAM ONLY TAPE SHALL EXTEND OVER ENDS OF BOX 1/2 INCH MINIMUM
6. PLACE ENVELOPE (WITH LABELS) FLAP DOWN ON TOP OF SEALED BOX SECURE WITH TAPE SPECIFICATION PPP-T-60, TYPE III, CLASS 2, ALONG CENTER SEAM ONLY
7. MARKING SHALL BE IN ACCORDANCE WITH STANDARD MIL-STD-129, AND SHALL BE CONTAINED TO SHIPPING TAG (MS18024-1) DO NOT MARK ON CONTAINER
8. SEALS (MS18018-1) TO BE LOCATED ON DIAGONALLY OPPOSITE CORNER LATCHES, AS SHOWN
9. CONTENTS LABEL (MS18021-1) SHALL BE PLACED ON TOP SURFACE OF CONTAINER, AS SHOWN
10. SHIPPING TAG SHALL BE LOCATED AS SHOWN ATTACH BY THREADING WITH TWO HOLES PROVIDED FOR SEALS
11. IF OVERPACKED TO SHIP MORE THAN ONE CONTAINER AT A TIME, THE SHIPPING DATA SHALL BE PLACED ON THE OUTSIDE OF THE OVERPACK
12. SHIPPING CONTAINER AND NO TAG IS REQUIRED
13. APPROXIMATE CUBIC FEET = 0.12 CUBIC FEET
14. DIMENSIONS IN INCHES
15. UNLESS OTHERWISE SPECIFIED, ALL DIMENSIONS SHALL BE TO THE CENTER OF THE HOLE OR TO THE DATE OF MANUFACTURE FOR BIP
16. FOR DESIGN CHANGE PURPOSES THIS STANDARD TAKES PRECEDENCE OVER PREVIOUS EDITIONS OF THIS STANDARD

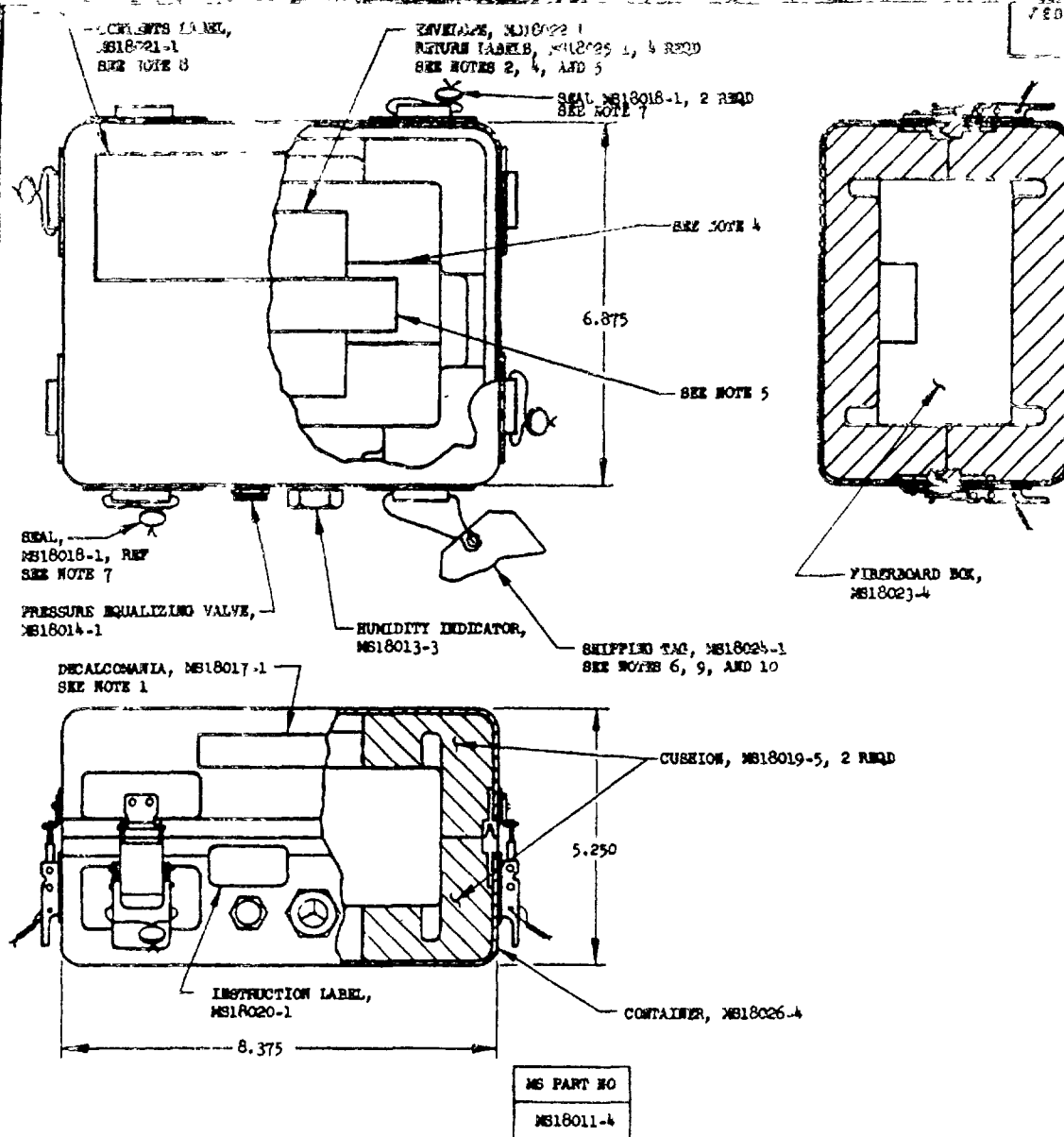
PREPARED BY C. J. W.	TITLE CONTAINERS, REUSABLE, A BULK, AND PORTABLE - ASSEMBLY FOR SHIPPING	MILITARY STANDARD MS18011(WP)
APPROVED BY J. W.	DATE 218/007	SHEET 3 OF

149 P. 10 P. 10

REVISED 10/1/80

APPROVED

specimen the United States Government hereby means no responsibility nor any obligation whatsoever and the fact that the Government may have furnished technical information in any way supplied the said drawings specifications or other data is not to be regarded by implication or otherwise as in any manner licensing the holder or any other person or corporation or conveying any rights or permission to manufacture use, or sell any patented invention that may in any way be related thereto.



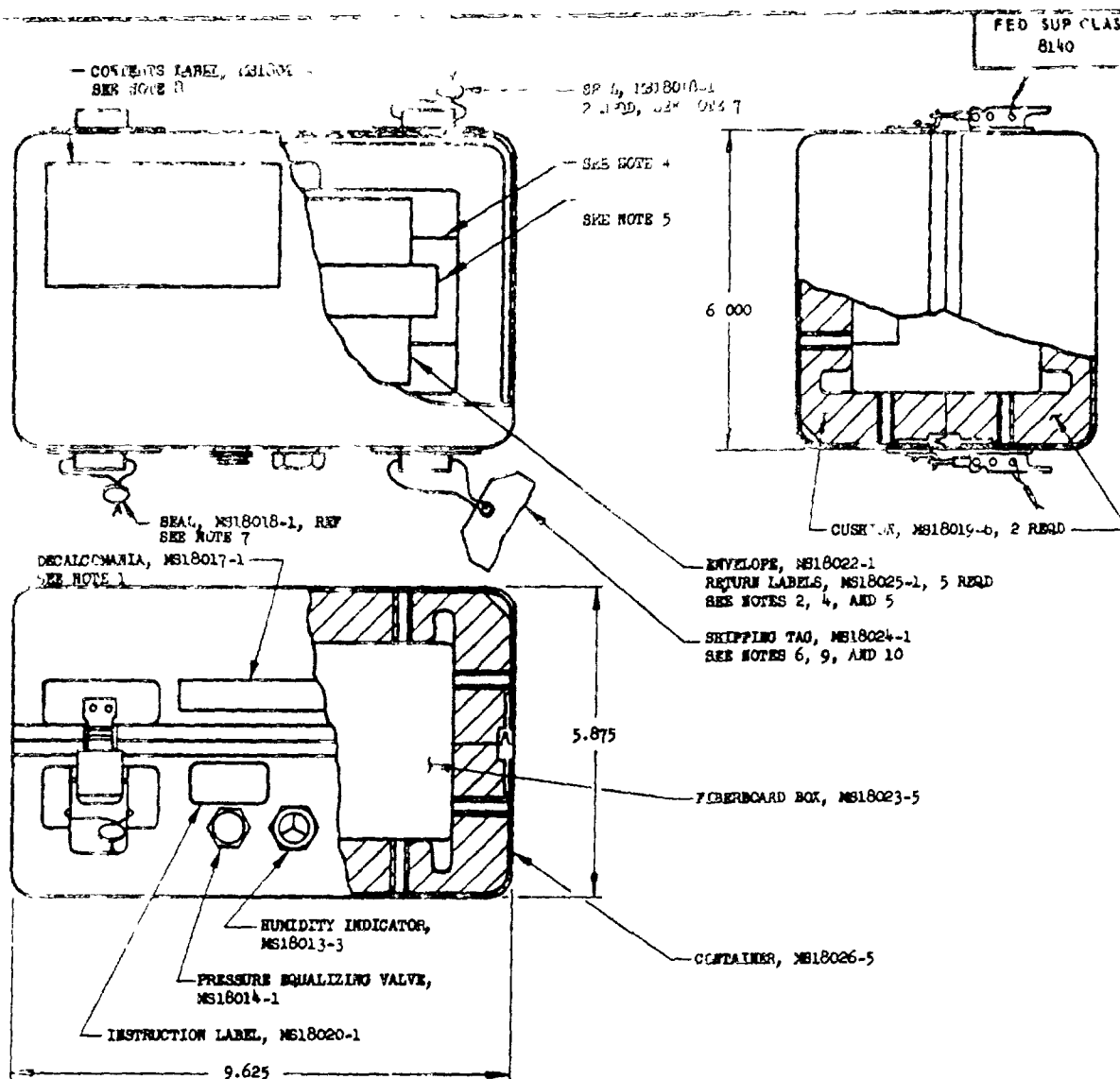
NOTES:

- DECALCOMANIA (MS18017-1) TO BE CENTRALLY LOCATED, AS SHOWN
- RETURN LABELS (MS18025-1) SHALL BE IN STRIP FORM. INSERT INTO ENVELOPE (MS18022-1), FOLD END FLAP AND PLACE IN BOX (MS18023-5).
- DESICCANT SHALL BE IN ACCORDANCE WITH SPECIFICATION MIL-D-3464, AND SHALL BE PLACED IN CONTAINER AT TIME OF PACKAGING COMPONENT. QUANTITY AND METHOD OF SECURING SHALL BE IN ACCORDANCE WITH SPECIFICATION MIL-P-116
- BEFORE INSERTING COMPONENT IN BOX, REMOVE ENVELOPE CONTAINING LABELS. PLACE COMPONENT IN BOX, WITH NECESSARY BLOCKING AND BRACING IN ACCORDANCE WITH CONTRACT PACKAGING PLAN SUPPLEMENT. SEAL BOX WITH ONE STRIP OF TAPE, SPECIFICATION PPP-T-76, OVER CENTER SEAM ONLY. TAPE SHALL EXTEND OVER ENDS OF BOX 1/2 INCH MINIMUM.
- PLACE ENVELOPE (WITH LABELS) FLAP DOWN ON TOP OF SEALED BOX. SECURE WITH TAPE SPECIFICATION PPP-T-60, TYPE III, CLASS 2, ALONG CENTER SEAM ONLY.
- MARKING SHALL BE IN ACCORDANCE WITH STANDARD MIL-STD-129, AND SHALL BE CONFINED TO SHIPPING TAG (MS18024-1). DO NOT MARK ON CONTAINER.
- SEALS (MS18018-1) TO BE LOCATED ON DIAGONALLY OPPOSITE CORNER LATCHES, AS SHOWN.
- CONTENTS LABEL (MS18021-1) SHALL BE PLACED ON TOP SURFACE OF CONTAINER, AS SHOWN.
- SHIPPING TAG SHALL BE LOCATED AS SHOWN. ATTACH BY THREADING WIRE THRU HOLES PROVIDED FOR SEALS.
- IF OVERPACKED TO SHIP MORE THAN ONE CONTAINER AT A TIME, THE SHIPPING DATA WILL BE PLACED ON THE OUTSIDE OF THE OVERPACK. SHIPPING CONTAINER AND NO TAG IS REQUIRED.
- APPROXIMATE CUBAGE = 0.21 CUBIC FEET.
- DIMENSIONS IN INCHES.
- REFERENCED DOCUMENTS SHALL BE OF THE ISSUE IN EFFECT ON DATE OF INVITATIONS FOR BID.
- FOR DESIGN FEATURE PURPOSE THIS STANDARD TAKES PRECEDENCE OVER PROCUREMENT DOCUMENTS REFERENCED HEREIN.

P A Other Cont	TITLE CONTAINERS, REUSABLE, ALUMINUM, HAND PORTABLE - ASSEMBLY FOR SHIPPING	MILITARY STANDARD
PROCUREMENT SPECIFICATION Ecode.	SUPERSEDES BUYERS TAG NO. 2184908	MS18011(WP)
		SHEET 1 OF

note activity. All other military activities are required to comply with this standard where suitable.

operation the United States Government thereby incurs no responsibility nor any obligation, whether expressed or implied, in any way supplied the said drawings, specifications or other data is not to be regarded by implication or otherwise as in any manner licensing the holder or any other person or corporation or conveying any right, or permission to manufacture use, or sell any patented invention that may in any way be related thereto.



MS PART NO
MS18011-5

NOTES

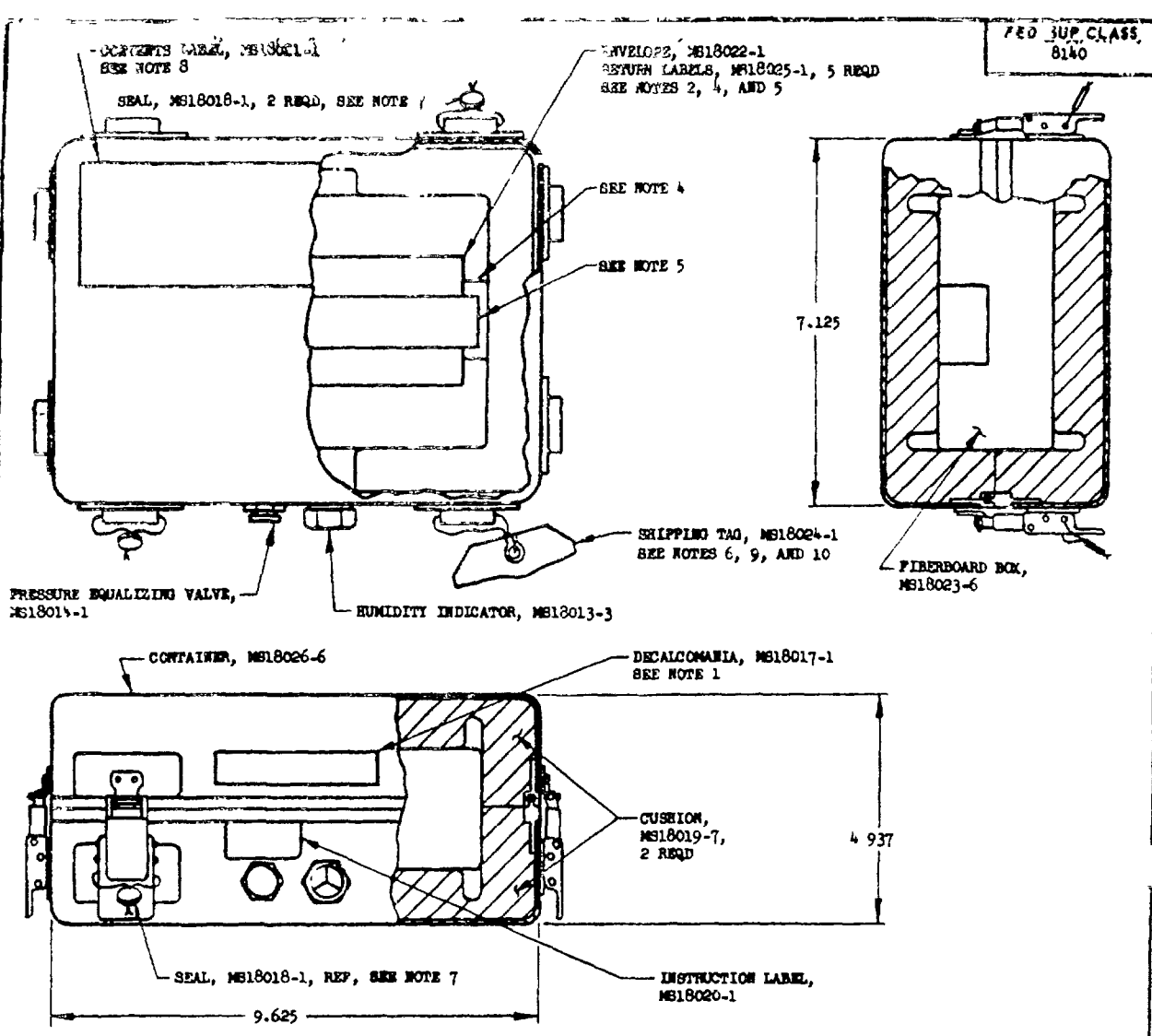
1. DECALCOMANIA (MS18017-1) TO BE CENTRALLY LOCATED, AS SHOWN
2. RETURN LABELS (MS18025-1) SHALL BE IN STRIP FORM. INSERT INTO ENVELOPE (MS18022-1), FOLD END FLAP AND PLACE IN BOX (MS18023-5).
3. DESICCANT SHALL BE IN ACCORDANCE WITH SPECIFICATION MIL-D-3464, AND SHALL BE PLACED IN CONTAINER AT TIME OF PACKAGING. QUANTITY AND METHOD OF SECURING SHALL BE IN ACCORDANCE WITH SPECIFICATION MIL-P-116.
4. BEFORE INSERTING COMPONENT IN BOX, REMOVE ENVELOPE CONTAINING LABELS. PLACE COMPONENT IN BOX, WITH NECESSARY MOULDING AND BRACER IN ACCORDANCE WITH CONTRACT PACKAGING PLAN SUPPLEMENT. SEAL BOX WITH ONE STRIP OF TAPE, SPECIFICATION PPP-T-76, OVER CENTER SEAM ONLY. TAPE SHALL EXTEND OVER ENDS OF BOX 1/2 INCH MINIMUM.
5. PLACE ENVELOPE (WITH LABELS) FLAP DOWN ON TOP OF SEALED BOX. SECURE WITH TAPE SPECIFICATION PPP-T-60, TYPE III, CLASS 2, ALSO A CENTER SEAM ONLY.
6. SHIPPING TAG SHALL BE IN ACCORDANCE WITH STANDARD MIL-STD-129, AND SHALL BE ATTACHED TO SHIPPING TAG (MS18024-1). DO NOT TAPE ON CONTAINER.
7. SEALS (MS1801B-1) TO BE LOCATED ON DECALCOMANIA OPPOSITE CORNER LABELS, AS SHOWN.
8. CONTENTS LABEL (MS18021-1) SHALL BE PLACED ON TOP SURFACE OF CONTAINER, AS SHOWN.
9. SHIPPING TAG SHALL BE LOCATED AS SHOWN. ATTACH BY THREADING WIRE THROUGH HOLES PROVIDED FOR SEALS.
10. TO GUARANTEE TO SHIP MORE THAN ONE CONTAINER AT A TIME, THE SHIPPING DATA WILL BE PLACED ON THE OUTSIDE OF THE OVERPACK. ATTACHING CONTAINER AND NO TAG IS REQUIRED.
11. APPROXIMATE CUBIC FEET 22 CUBIC FEET
12. SEE FIGURE 11 FOR DIMENSIONS
13. CONTAINER MANUFACTURED AFTER DATE OF ISSUE OF THIS STANDARD SHALL BE IN ACCORDANCE WITH THIS STANDARD
14. THIS STANDARD SUPERSEDES ALL PREVIOUS STANDARDS FOR THIS STANDARD

APPROVED 7 121
REVISED 7 9, 16
FOR CHANGES SEE SHEETS 7 9, 16

P.A. 100-1 100-1	TITLE MILITARY STANDARD MS18011-5 (WP)
---------------------	--

specification the United States Government hereby incurs no responsibility nor any obligation whatsoever and the fact that the Government may have furnished information or in any way supplied the said drawings, specifications, or other data is not to be regarded by implication or otherwise as in any manner licensing the holder or any other person or corporation or conveying any right or permission to manufacture use or sell any patented invention that may in any way be related thereto

not voluntary. All other military activities are required to employ this standard where suitable



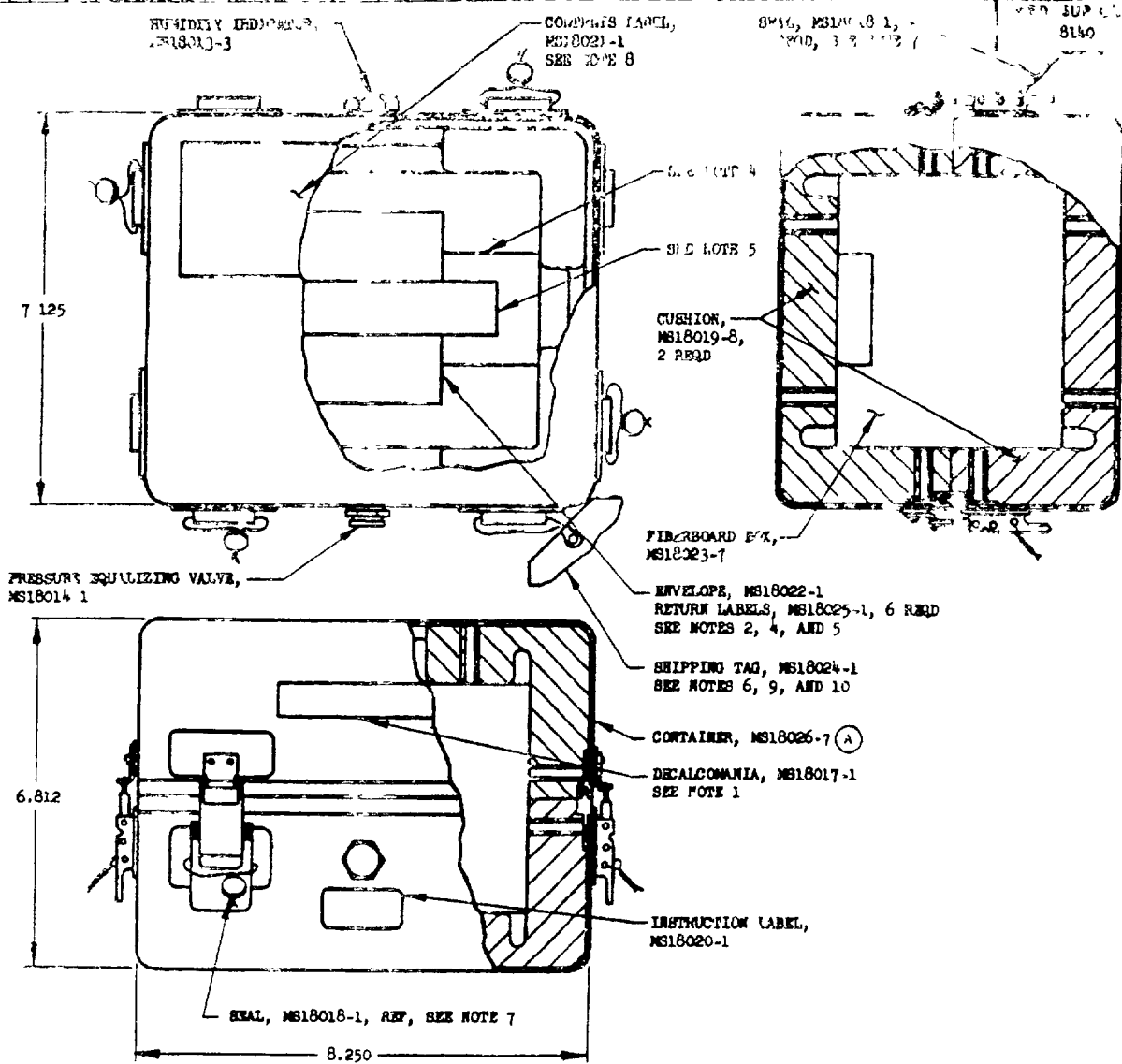
MS PART NO
MS18011-6

- NOTES
1. DECALCOMANIA (MS18017-1) TO BE CENTRALLY LOCATED, AS SHOWN
 2. RETURN LABELS (MS18025-1) SHALL BE IN STRIP FORM. INSERT INTO ENVELOPE (MS18022-1), FOLD END FLAP AND PLACE IN BOX (MS18023-7).
 3. DESICCANT SHALL BE IN ACCORDANCE WITH SPECIFICATION MIL-D-3464, AND SHALL BE PLACED IN CONTAINER AT TIME OF PACKAGING COMPONENT. QUANTITY AND METHOD OF SECURING SHALL BE IN ACCORDANCE WITH SPECIFICATION MIL-P-116.
 4. BEFORE INSERTING COMPONENT IN BOX, REMOVE ENVELOPE CONTAINING LABELS. PLACE COMPONENT IN BOX, WITH NECESSARY BLOCKING AND BRACING IN ACCORDANCE WITH CONTRACT PACKAGING PLAN SUPPLEMENT. SEAL BOX WITH ONE STRIP OF TAPE, SPECIFICATION PPP-T-76, OVER CENTER SEAM ONLY. TAPE SHALL EXTEND OVER ENDS OF BOX 1/2 INCH MINIMUM.
 5. PLACE ENVELOPE (WITH LABELS) FLAP DOWN ON TOP OF SEALED BOX. SECURE WITH TAPE SPECIFICATION PPP-T-60, TYPE III, CLASS 2, ALONG CENTER SEAM ONLY.
 6. MARKING SHALL BE IN ACCORDANCE WITH STANDARD MIL-STD-129, AND SHALL BE CONFINED TO SHIPPING TAG (MS18024-1). DO NOT MARK ON CONTAINER.
 7. SEALS (MS18018-1) TO BE LOCATED ON DIAGONALLY OPPOSITE CORNER LATCHES, AS SHOWN.
 8. CONTENTS LABEL (MS18021-1) SHALL BE PLACED ON TOP SURFACE OF CONTAINER, AS SHOWN.
 9. SHIPPING TAG SHALL BE LOCATED AS SHOWN. ATTACH BY THREADING WIRE THRU HOLES PROVIDED FOR SEALS.
 10. IF OVERPACKED TO SHIP MORE THAN ONE CONTAINER AT A TIME, THE SHIPPING DATA WILL BE PLACED ON THE OUTSIDE OF THE OVERPACK SHIPPING CONTAINER AND NO TAG IS REQUIRED.
 11. APPROXIMATE CUBAGE = 0.24 CUBIC FEET.
 12. DIMENSIONS IN INCHES.
 13. REFERENCED DOCUMENTS SHALL BE OF THE ISSUE IN EFFECT ON DATE OF INVITATIONS FOR BID.
 14. FOR DESIGN FEATURE PURPOSES, THIS STANDARD TAKES PRECEDENCE OVER PROCUREMENT DOCUMENTS REFERENCED HEREIN.

P. A. NAVY-OP Other Coast	TITLE CONTAINERS, REUSABLE, ALUMINUM, HAND PORTABLE - ASSEMBLY FOR SHIPPING	MILITARY STANDARD	
		MS18011(WP)	
PROCUREMENT SPECIFICATION Title	SUPERSEDED JANUARY 1960 NO. 2184910	SHEET	5 OF 5

REVISED 22 Jan 7
A
K/R CHANGES SEE SHEETS 7 & 16

NOTES: - When Government drawings, specifications, or other data are used for any purpose other than in connection with a definitely related Government procurement operation the United States Government thereby incurs no responsibility nor any obligation whatsoever, and the fact that the Government may have furnished such data in any way supplied the said drawings, specifications, or other data is not to be construed by implication or otherwise as in any manner licent, a, the amount of any other person or corporation or conveying any right or permission to manufacture use or sell any patented invention that may in any way be related thereto



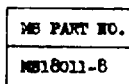
NOTES.

1. DECALCOMANIA (MS18017-1) TO BE CENTRALLY LOCATED, AS SHOWN
2. RETURN LABELS (MS18025-1) SHALL BE IN STRIP FORM. INSERT INTO ENVELOPE (MS18022-1), FOLD END FLAP AND PLACE IN BOX (MS18023-9).
3. DESICCANT SHALL BE IN ACCORDANCE WITH SPECIFICATION MIL-D-3464, AND SHALL BE PLACED IN CONTAINER AT TIME OF PACKAGING COMPONENT. QUANTITY AND METHOD OF SECURING SHALL BE IN ACCORDANCE WITH SPECIFICATION MIL-P-116
4. BEFORE INSERTING COMPONENT IN BOX, REMOVE ENVELOPE CONTAINING LABELS. PLACE COMPONENT IN BOX, WITH NECESSARY BLOCKING AND BRACING IN ACCORDANCE WITH CONTRACT PACKAGING PLAN SUPPLEMENT. SEAL BOX WITH ONE STRIP OF TAPE, SPECIFICATION PPP-T-76, OVER CENTER SEAM ONLY. TAPE SHALL EXTEND OVER ENDS OF BOX 1/2 INCH MINIMUM.
5. PLACE ENVELOPE (WITH LABELS) FLAP DOWN ON TOP OF SEALED BOX. SECURE WITH TAPE SPECIFICATION PPP-T-60, TYPE III, CLASS 2, ALONG CENTER SEAM ONLY.
6. MARKING SHALL BE IN ACCORDANCE WITH STANDARD MIL-STD-129, AND SHALL BE CONFINED TO SHIPPING TAG (MS18024-1). DO NOT MARK ON CONTAINER.
7. SEALS (MS18018-1) TO BE LOCATED ON DIAGONALLY OPPOSITE CORNER LATCHES, AS SHOWN.
8. CONTENTS LABEL (MS18021-1) SHALL BE PLACED ON TOP SURFACE OF CONTAINER, AS SHOWN.
9. SHIPPING TAG SHALL BE LOCATED AS SHOWN. ATTACH BY THREADING WIRE THRU HOLES PROVIDED FOR SEALS.
10. IF OVERPACKED TO SHIP MORE THAN ONE CONTAINER AT A TIME, THE SHIPPING DATA WILL BE PLACED ON THE OUTSIDE OF THE OVERPACK. SHIPPING CONTAINER AND NO TAG IS REQUIRED.
11. APPROXIMATE CUBAGE = 0.28 CUBIC FEET.
12. DIMENSIONS IN INCHES.
13. REFERENCED DOCUMENTS SHALL BE OF THE ISSUE IN EFFECT ON DATE OF INVITATIONS FOR BID.
14. FOR D.S. ON FEATURE PURPOSES THIS STANDARD TAKES PRECEDENCE OVER PROCUREMENT DOCUMENTS.

NOTES: - When Government drawings, specifications, or other data are used for any purpose other than in connection with a definitely related Government procurement operation the United States Government thereby incurs no responsibility nor any obligation whatsoever, and the fact that the Government may have furnished such data in any way supplied the said drawings, specifications, or other data is not to be construed by implication or otherwise as in any manner licent, a, the amount of any other person or corporation or conveying any right or permission to manufacture use or sell any patented invention that may in any way be related thereto

APPROVED 21 16 17 REVISED (A) FOR CHANGES SEE SHEETS 7, 9, 16

PA 107P	TITLE	MILITARY STANDARD
MS 18011-7	CONTAINERS, RESEALABLE, ALL PURPOSE HARD PORTABLE - ASSEMBLY FOR MULTIPLE	MS18011(WP)
PROCUREMENT SPECIFICATION	SUPERSEDES	SHEET 7 OF
None	NUMBER DAD NO 2104911	

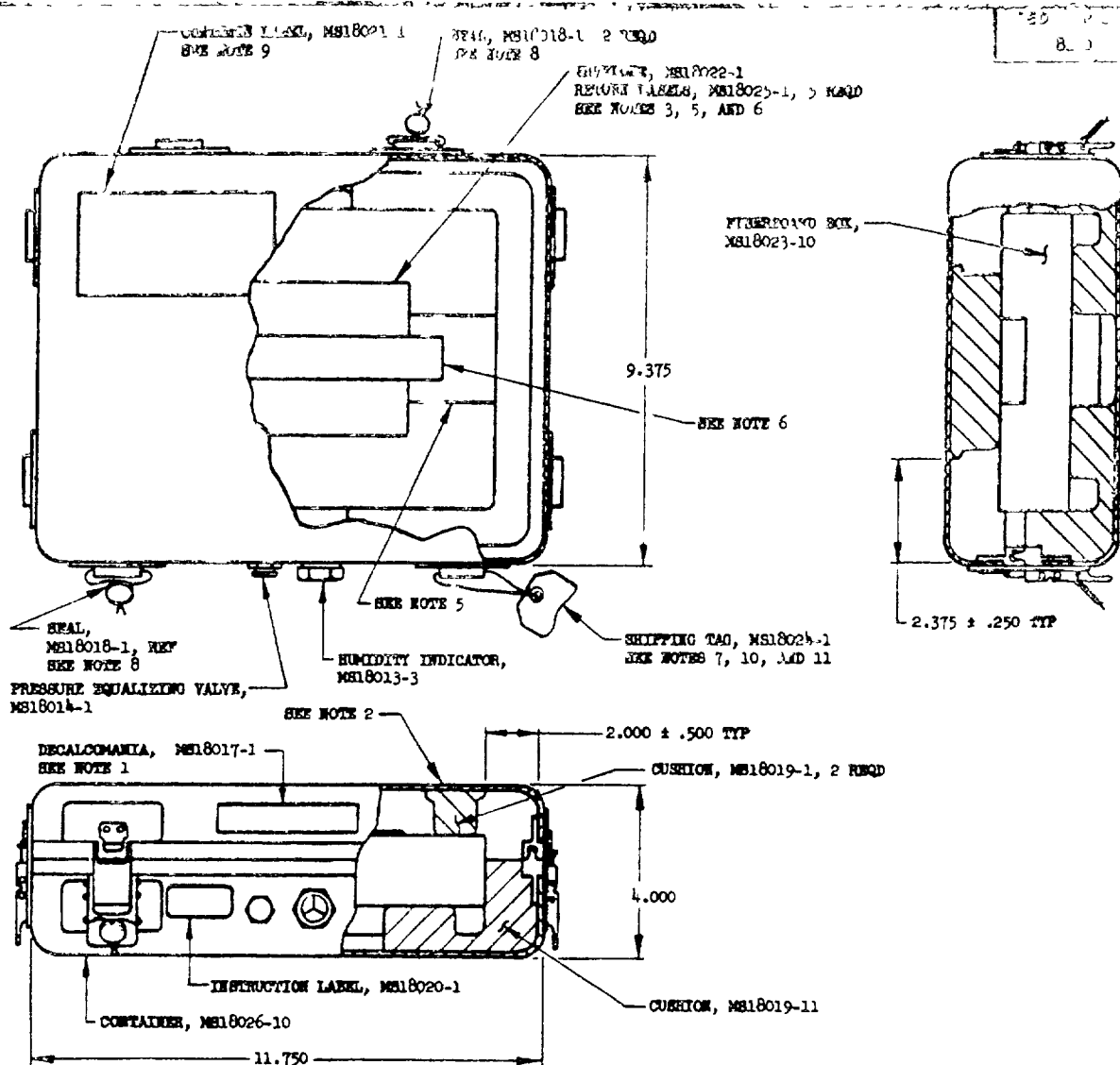




1. DECALCOMANIA (MS18017-1) TO BE CENTRALLY LOCATED, AS SHOWN
2. SECURE TOP CUSHIONS (MS18019-1) TO COVER WITH R. B. FULLER ADHESIVE NO 5621 OR EQUIVALENT.
3. RETURN LABELS (MS18025-1) SHALL BE IN STRIP FORM. INSERT INTO ENVELOPE (MS18022-1), FOLD END FLAP AND PLACE IN BOX (MS18023-8)
4. DESICCANT SHALL BE IN ACCORDANCE WITH SPECIFICATION MIL-D-3464, AND SHALL BE PLACED IN CONTAINER AT TIME OF PACKAGING COMPONENT. QUANTITY AND METHOD OF SECURING SHALL BE IN ACCORDANCE WITH SPECIFICATION MIL-P-116.
5. BEFORE INSERTING COMPONENT IN BOX, REMOVE ENVELOPE CONTAINING LABELS. PLACE COMPONENT IN BOX, WITH NECESSARY BLOCKING AND BRACING IN ACCORDANCE WITH CONTRACT PACKAGING PLAN SUPPLEMENT. SEAL BOX WITH ONE STRIP OF TAPE SPECIFICATION PTP-T-76, OVER CENTER SEAM ONLY. TAPE SHALL EXTEND OVER ENDS OF BOX 1/2 INCH MINIMUM.
6. PLACE ENVELOPE (WITH LABELS) FLAP DOWN ON TOP OF SEALED BOX. SECURE WITH TAPE SPECIFICATION PTP-T-60, TYPE III, CLASS 2, ALONG CENTER SEAM ONLY.
7. MARKING SHALL BE IN ACCORDANCE WITH STANDARD MIL-STD-129, AND SHALL BE COMPLIED TO SHIPPING TAG (MS18024-1). DO NOT MARK ON CONTAINER.
8. SEALS (MS18018-1) TO BE LOCATED ON DIAGONALLY OPPOSITE CORNER LATCHES, AS SHOWN
9. CONTENTS LABEL (MS18021-1) SHALL BE PLACED ON TOP SURFACE OF CONTAINER, AS SHOWN
10. SHIPPING TAG SHALL BE LOCATED AS SHOWN. ATTACH BY THREADING WIRE THRU HOLES PROVIDED FOR SEALS
11. IF OVERPACKED TO SHIP MORE THAN ONE CONTAINER AT A TIME, THE SHIPPING DATA WILL BE PLACED ON THE OUTSIDE OF THE OVERPACK SHIPPING CONTAINER AND NO TAG IS REQUIRED.
12. APPROXIMATE VOLUME = 0.29 CUBIC FEET.
13. DIMENSIONS IN INCHES.
14. WHEN USED COMBINED WITH THE ISSUE IN EFFECT ON DATE OF INVITATIONS FOR BIDDING.
15. FOR DESIGN FEATURE PURPOSES THIS STANDARD TAKES PRECEDENCE OVER PROCUREMENT DOCUMENTS REFERENCED HEREIN

P.A.	DATE	MILITARY STANDARD
(G-7-C)	COUNTERS, MEASURES, ALTIMETER LAND PORTABLE - ASSEMBLY WITH CAMPING	MS18011(WP)
TECHNICAL SPECIFICATION	SUPersedes UNITED STATES NO. 2410504	SHEET 9 OF

NOTE:—When Government drawings, specifications, or other data are used for any purpose other than in connection with a definite Government procurement operation, the United States Government hereby incurs no responsibility nor any obligation whatsoever, and the fact that the Government may have furnished, furnished, or in any way supplied the said drawings, specifications, or other data is not to be regarded by implication or otherwise as in any manner licensing the holder in any way, person or corporation, or conveying any rights or permission to manufacture use or sell any patented invention that may in any way be related thereto.



MS PART NO.

MS18011-10

NOTES:

1. DECALCOMANIA (MS18017-1) TO BE CENTRALLY LOCATED, AS SHOWN.
2. SECURE TOP CUSHIONS (MS18019-1) TO COVER WITH E. B. FULLER ADHESIVE NO. 5621 OR EQUIVALENT.
3. RETURN LABELS (MS18025-1) SHALL BE IN STRIP FORM. INSERT INTO ENVELOPE (MS18022-1), FOLD END FLAP AND PLACE IN BOX (MS18023-10).
4. DISHICANT SHALL BE IN ACCORDANCE WITH SPECIFICATION MIL-D-3464, AND SHALL BE PLACED IN CONTAINER AT TIME OF PACKAGING COMPONENT. QUANTITY AND METHOD OF SECURING SHALL BE IN ACCORDANCE WITH SPECIFICATION MIL-P-116.
5. BEFORE INSERTING COMPONENT IN BOX, REMOVE ENVELOPE CONTAINING LABELS. PLACE COMPONENT IN BOX, WITH NECESSARY BLOCKING AND BRACING IN ACCORDANCE WITH CONTRACT PACKAGING PLAN SUPPLEMENT. SEAL BOX WITH ONE STRIP OF TAPE, SPECIFICATION PPP-T-76, OVER CENTER SEAM ONLY. TAPE SHALL EXTEND OVER ENDS OF BOX 1/2 INCH MINIMUM.
6. PLACE ENVELOPE (WITH LABELS) FLAP DOWN ON TOP OF SEALED BOX. SECURE WITH TAPE SPECIFICATION PPP-T-60, TYPE III, CLASS 2, ALONG CENTER SEAM ONLY.
7. MARKING SHALL BE IN ACCORDANCE WITH STANDARD MIL-STD-129, AND SHALL BE CONFIRMED TO SHIPPING TAG (MS18024-1). DO NOT MARK ON CONTAINER.
8. SEALS (MS18018-1) TO BE LOCATED ON DIAGONALLY OPPOSITE CORNER LATCHES, AS SHOWN.
9. CONTENTS LABEL (MS18021-1) SHALL BE PLACED ON TOP SURFACE OF CONTAINER, AS SHOWN.
10. SHIPPING TAG SHALL BE LOCATED AS SHOWN. ATTACH BY THREADING WIRE THRU HOLES PROVIDED FOR SEALS.
11. IF OVERPACKED TO BE MORE THAN ONE CONTAINER AT A TIME, THE SHIPPING DATA WILL BE PLACED ON THE OUTSIDE OF THE OVERPACK SHIPPING CONTAINER AND NO TAG IS REQUIRED.
12. APPROXIMATE CUBAGE = 0.30 CUBIC FEET.
13. DIMENSIONS IN INCHES.
14. REFERENCES DOCUMENTS SHALL BE OF THE ISSUE IN EFFECT ON DATE OF INVITATIONS FOR BID.
15. FOR DESIGN FEATURE PURPOSES THIS STANDARD TAKES PRECEDENCE OVER PROCUREMENT DOCUMENTS REFERENCED HEREIN.

P. A.	NAVY-YP	TITLE	MILITARY STANDARD
Other Cust		CONTAINERS, REUSABLE, ALUMINUM HAND PORTABLE - ASSEMBLY FOR SHIPPING	MS18011(WP)
PROCUREMENT SPECIFICATION None.	SUPERSEDES	USAFS DMC NO. 2210505	SHEET 10 OF

Approved for use by the Bureau of Naval Weapons, Department of the Navy, and is mandatory for use by the Navy. All other military activities are required to comply with this standard where suitable.

REVISED 23 JAN 61

REVISED

FOR CHANGES SEE SHEETS 7 & 8, 16



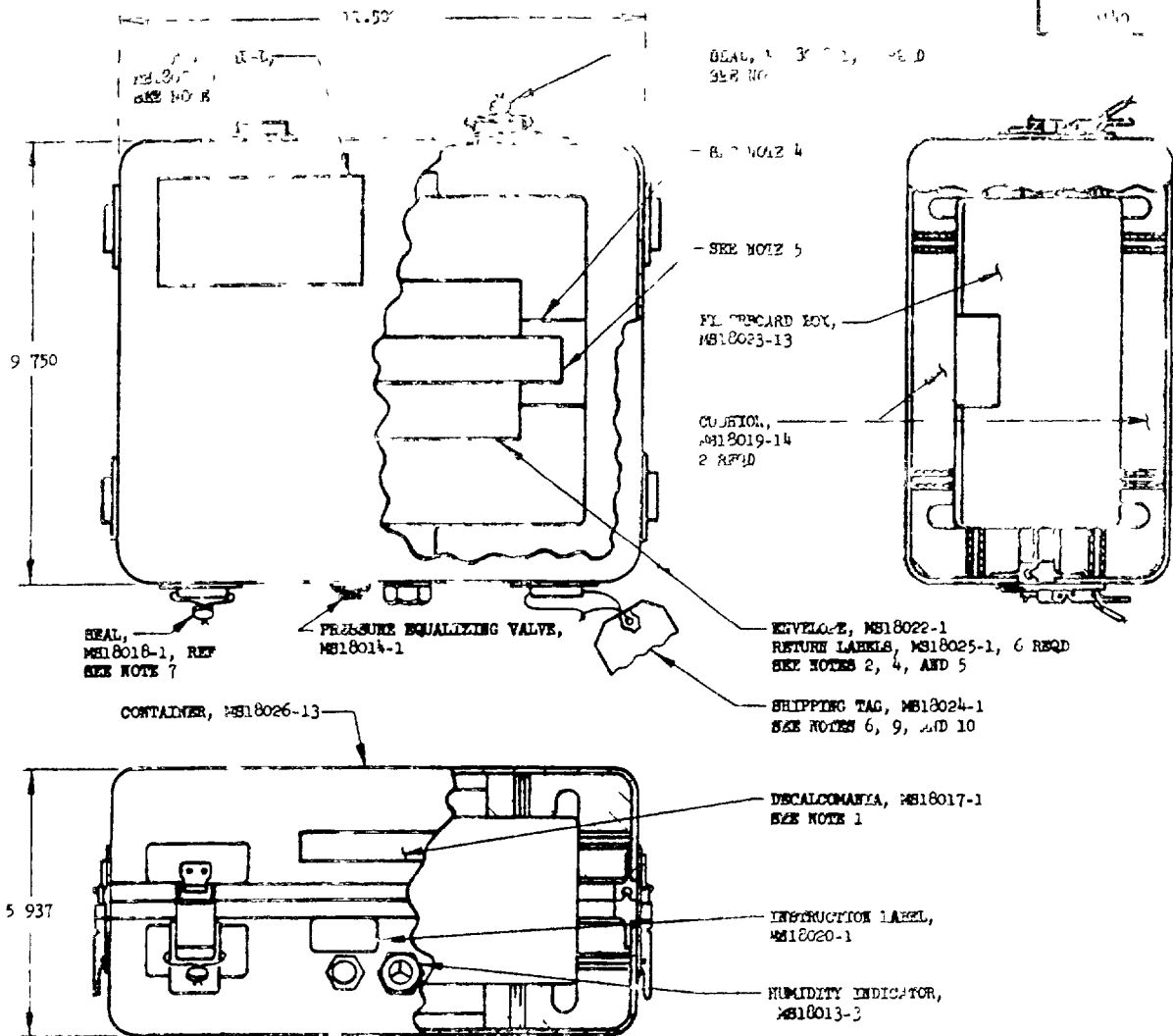
- | | | | |
|-----------------------|-----------------------------------|--|----------------------------------|
| U C 1477-XP
U W 11 | TITLE | CONTAINERS, HAND LBS, ALUMINUM
RING PORTABLE - ASSEMBLY FOR BRIT PING | MILITARY STANDARD
MS18011(WP) |
| | PROCUREMENT SPECIFICATION
None | SUPERSEDES
DUKPS INC HQ 2210506 | SHEET 11 OF |



- | | | |
|------------------------------------|--|-------------------|
| P.A. NAVY-JP
Other Cost | TITLE

CONTAINERS, RUBBERIZ, ALUMINUM
HAND PORTABLE - ASSEMBLY FOR SHIPPING | MILITARY STANDARD |
| | | MS18011(WP) |
| PROCUREMENT SPECIFICATION
None. | SUPERSEDES
SUPERSEDES IN NO 2210507 | SHEET 12 OF |

or in any way supplied the said drawings, specifications, or other data is not to be taken as implying an endorsement or approval in any manner by the Department of Defense, or by any other person or corporation, or conveying any right or permission to manufacture, use, or sell any patented invention that may in any way be related to the drawings, specifications, or other data.



MS PART NO.
MS18011-13

NOTES

1. DECALCOMANIA (MS18017-1) TO BE CENTRALLY LOCATED, AS SHOWN
2. RETURN LABELS (MS18025-1) SHALL BE IN STRIP FORM. INSERT INTO ENVELOPE (MS18022-1), FOLD END FLAP AND PLACE IN BOX (MS18023-13)
3. INSTRUMENT SHALL BE IN ACCORDANCE WITH SPECIFICATION MIL-D-3464, AND SHALL BE PLACED IN CONTAINER AT TIME OF PACKAGING COMPONENT. QUANTITY AND METHOD OF SECURING SHALL BE IN ACCORDANCE WITH SPECIFICATION MIL-F-116
4. BEFORE INSERTING COMPONENT IN BOX, REMOVE ENVELOPE CONTAINING LABELS. PLACE COMPONENT IN BOX, WITH NECESSARY BLOCKING AND BRACING IN ACCORDANCE WITH CONTRACT PACKAGING PLAN SUPPLEMENT. SEAL BOX WITH ONE STRIP OF TAPE, SPECIFICATION PPP-T-76, OVER CENTER SEAM ONLY. TAPE SHALL EXTEND OVER EDGE OF BOX 1/2 INCH MINIMUM
5. PLACE ENVELOPE (WITH LABELS) FLAP DOWN ON TOP OF SEALED BOX. SECURE WITH TAPE SPECIFICATION PPP-T-60, TYPE III, CLASS 2 ALONG CENTER SEAM ONLY
6. MARKING SHALL BE IN ACCORDANCE WITH STANDARD MIL-STD-129, AND SHALL BE CONFINED TO SHIPPING TAG (MS18024-1). DO NOT MARK ON CONTAINER.
7. SEALS (MS18018-1) TO BE LOCATED ON DIAGONALLY OPPOSITE CORNER LATCHES, AS SHOWN
8. CONTENTS LABEL (MS18021-1) SHALL BE PLACED ON TOP SURFACE OF CONTAINER, AS SHOWN
9. SHIPPING TAG SHALL BE LOCATED AS SHOWN. ATTACH BY THREADING WIRE THRU HOLES PROVIDED FOR SEALS
10. IF OVERPACKED TO SHIP MORE THAN ONE CONTAINER AT A TIME, THE SHIPPING DATA WILL BE PLACED ON THE OUTSIDE OF THE OVERPACK. SHIPPING CONTAINER AND NO TAG IS REQUIRED.
11. APPROXIMATE CUBAGE = 0.49 CUBIC FEET
12. DIMENSIONS IN INCHES
13. REFERENCED DOCUMENTS SHALL BE OF THE LATEST IN EFFECT ON DATE OF INVITATIONS FOR BID
14. FOR DESIGN FEATURE PURPOSES THIS STANDARD TAKES PRECEDENCE OVER PREVIOUS DOCUMENTS REFERENCED HEREIN

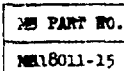
APPROVED 1 JAN 1964 REVISED 1 JAN 1964

PA HAY 3P CHAY 3P	TITLE CONTAINERS, RESONANCE, ANTIFREEZE AND FERTILIZERS - SPECIFICATIONS FOR MILITARY STANDARD	MILITARY STANDARD MS18011(WP)
EXECUTIVE SPECIFICATION CORS.	SUPERSPEC DESIGN NO. 2210503	SHEET 13 OF 13

DD FORM 32-1 (Limited circulation)

PREVIOUS EDITIONS OF THIS STANDARD ARE OBSOLETE

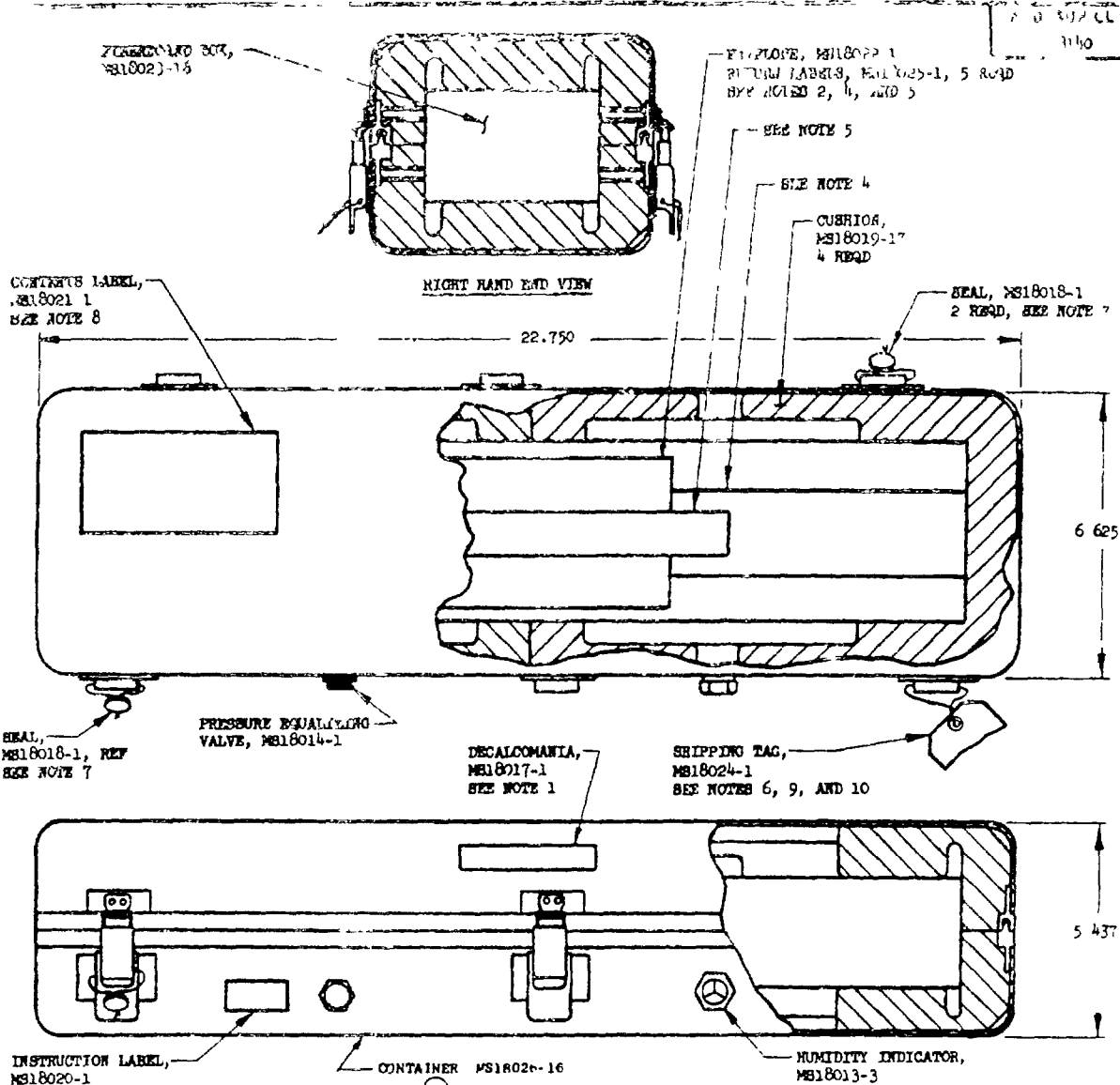
APPROVED 2 JUL 1964 REVISED (A) FOR CHANGES SFP SHIFTS 7,9, 16



1. SECALCOMANIA (MS18017-1) TO BE CENTRALLY LOCATED, AS SHOWN.
2. RETURN LABELS (MS18025-1) SHALL LN IN STRIP FORM. INSERT INTO ENVELOPE (MS18022-1), FOLD END FLAP AND PLACE IN BOX (MS18023-15).
3. EFFICACANT SHALL BE IN ACCORDANCE WITH SPECIFICATION MIL-D-3461, AND SHALL BE PLACED IN CONTAINER AT TIME OF PACKAGING COMPONENT. QUANTITY AND METHOD OF SECURING SHALL BE IN ACCORDANCE WITH SPECIFICATION MIL-P-116.
4. RETURN IDENTIFYING COMPONENT IN BOX, REMOVE ENVELOPE CONTAINING LABELS. PLACE COMPONENT IN BOX, WITH NECESSARY BLOCKING AND BRACING IN ACCORDANCE WITH CONTRACT PACKAGING PLAN SUPPLEMENT. SEAL BOX WITH ONE STRIP OF TAPE, SPECIFICATION PPP-T-76, OVER CENTER SEAM ONLY. TAPE SHALL EXTEND OVER ENDS OF BOX 1/2 INCH MINIMUM.
5. PLACE ENVELOPE (WITH LABELS) FLAP DOWN ON TOP OF SEALED BOX. SECURE WITH TAPE SPECIFICATION PPP-T-60, TYPE III, CLASS 2, ALONG CENTER SEAM ONLY.
6. MARKING SHALL BE IN ACCORDANCE WITH STANDARD MIL-STD-129, AND SHALL BE CONFINED TO SHIPPING TAG (MS18024-1). DO NOT MARK ON CONTAINER.
7. SEALS (MS18018-1) TO BE LOCATED ON DIAGONALLY OPPOSITE CORNER LATCHES, AS SHOWN.
8. CONTENTS LABEL (MS18021-1) SHALL BE PLACED ON TOP SURFACE OF CONTAINER, AS SHOWN.
9. SHIPPING TAG SHALL BE LOCATED AS SHOWN. ATTACH BY THREADING WIRE THRU HOLES PROVIDED FOR SEALS.
10. IF OVERPACKED TO SHIP MORE THAN ONE CONTAINER AT A TIME, THE SHIPPING DATA WILL BE PLACED ON THE OUTSIDE OF THE CONTACT SHIPPING CONTAINER AND NO TAG IS REQUIRED.
11. APPROXIMATE CURAGE = 3.54 CUBIC FEET
12. DIMENSIONS IN INCHES
13. REFERENCED DOCUMENTS SHALL BE OF THE ISSUE IN EFFECT ON DATE OF INVITATIONS FOR BID
1. FOR DESIGN FEATURE PUBLISHED THIS IS A VOID TAKES PRECEDENCE OVER PROCUREMENT DOCUMENTS IF ENCLOSED HEREIN

APPROVED 2 11 REVISED (A) FOR CHANGES SEE SHEETS 7 9 10

NOTICE—When Government drawings, specifications, or other data are used for any purpose other than in connection with a specific contract, the use of such data without the approval of the United States Government is prohibited. It is the policy of the United States Government that the Government may have certain rights in any drawing, specification, or other data supplied by it, and that such rights shall be preserved in any manner, including the right to use or to authorize the use of such data in any way, without payment of fee, and without the necessity of obtaining permission therefor.



NOTES

1. DECALCOMANIA (MS18017-1) TO BE CENTRALLY LOCATED, AS SHOWN
2. RETURN LABELS (MS18025-1) SHALL BE IN STRIP FORM. INSERT INTO ENVELOPE (MS18022-1), FOLD END FLAP AND PLACE IN BOX (MS18023-16).
3. DESICCANT SHALL BE IN ACCORDANCE WITH SPECIFICATION MIL-D-3464, AND SHALL BE PLACED IN CONTAINER AT TIME OF PACKAGING COMPONENT. QUANTITY AND METHOD OF SECURING SHALL BE IN ACCORDANCE WITH SPECIFICATION MIL-P-116.
4. BEFORE INSERTING COMPONENT IN BOX, REMOVE ENVELOPE CONTAINING LABELS. PLACE COMPONENT IN BOX, WITH NECESSARY BLOCKING AND BRACING IN ACCORDANCE WITH CONTRACT PACKAGING PLAN SUPPLEMENT. SEAL BOX WITH ONE STRIP OF TAPE, SPECIFICATION PPP-7-76, OVER CENTER SEAM ONLY. TAPE SHALL EXTEND OVER ENDS OF BOX 1/2 INCH MINIMUM.
5. PLACE ENVELOPE (WITH LABELS) FLAP DOWN ON TOP OF SEALED BOX. SECURE WITH TAPE SPECIFICATION PPP-7-60, TYPE III, CLASS C ALONG CENTER SEAM ONLY.
6. MARKING SHALL BE IN ACCORDANCE WITH STANDARD MIL-STD-129, AND SHALL BE CONFINED TO SHIPPING TAG (MS18024-1). DO NOT MARK ON CONTAINER.
7. SEALS (MS18018-1) TO BE LOCATED ON DIAGONALLY OPPOSITE CORNER LATCHES, AS SHOWN.
8. CONTENTS LABEL (MS18021-1) SHALL BE PLACED ON TOP SURFACE OF CONTAINER, AS SHOWN.
9. SHIPPING TAG SHALL BE LOCATED AS SHOWN. ATTACH BY THREADING WIRE THRU HOLES PROVIDED FOR SEALS.
10. IF OVERPACKED TO SHIP MORE THAN ONE CONTAINER AT A TIME, THE SHIPPING DATA WILL BE PLACED ON THE OUTSIDE OF THE OVERPACK. SHIPPING CONTAINER AND NO TAG IS REQUIRED.
11. APPROXIMATE CUBAGE = 0.54 CUBIC FEET.
12. DIMENSIONS IN INCHES.
13. REFERENCED DOCUMENTS SHALL BE OF THE ISSUE IN EFFECT ON DATE OF INVITATION FOR BID.
14. FOR DESIGN FEATURE PURPOSES THIS STANDARD TAKES PRECEDENCE OVER PREVIOUS DOCUMENTS REFERENCED HEREIN.

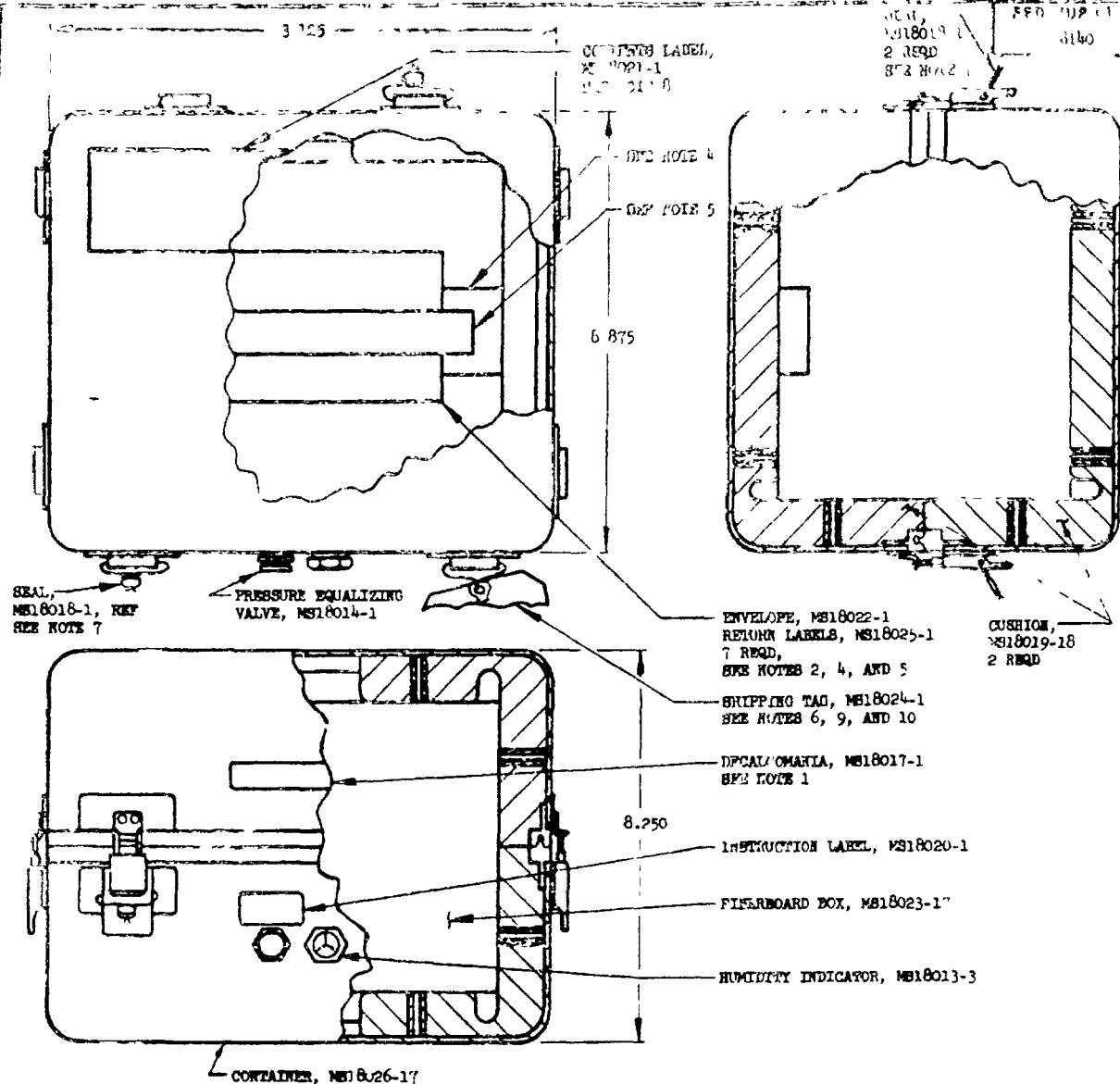
P A NAVY-WP	TITLE	MILITARY STANDARD
Other Cust	CONTAINERS, REUSABLE, ALUMINUM HAND PORTABLE - ASSEMBLY FOR SHIPPING	MS18011(WP)
PROCUREMENT SPECIFICATION	SUPERSEDES	SHEET 16
Doc. No.	DUN&PS DTC NO 2210511	

DD FORM 672-1 (10-11-54)

PREVIOUS EDITIONS OF THIS FORM ARE OBSOLETE

APPROVED 2 11 REVISED 13 FOR CHANGES SEE SHEETS 7, 9, 16

Operation the Joint's Stores Government hereby accept no responsibility for any damages, injury, or loss, or for any way supplied the said drawings, specifications, or other data it not to be regarded by implication as evidence as to any manner licensing the holder, or any person or corporation in carrying out any rights or permission to manufacture or use in any way to be related thereto.

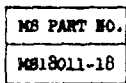


NOTES

1. DPCAL/OMANIA (MS18017-1) TO BE CENTRALLY LOCATED, AS SHOWN.
2. RETURN LABELS (MS18025-1) SHALL BE IN STRIP FORM. INSERT INTO ENVELOPE (MS18022-1), FOLD FWD FLAP AND PLACE IN BOX (MS18023-17).
3. DESICCANT SHALL BE IN ACCORDANCE WITH SPECIFICATION MIL-D-3464, AND SHALL BE PLACED IN CONTAINER AT TIME OF PACKAGING COMPONENT. QUANTITY AND METHOD OF SECURING SHALL BE IN ACCORDANCE WITH SPECIFICATION MIL-P-116.
4. BEFORE INSERTING COMPONENT IN BOX, REMOVE ENVELOPE CONTAINING LABELS. PLACE COMPONENT IN BOX, WITH NECESSARY BLOCKING AND BRACING IN ACCORDANCE WITH CONTRACT PACKAGING PLAN SUPPLEMENT. SEAL BOX WITH ONE STRIP OF TAPE, SPECIFICATION PPP-T-76, OVER CENTER SEAM ONLY. TAPE SHALL EXTEND OVER ENDS OF BOX 1/2 INCH MINIMUM.
5. PLACE ENVELOPE (WITH LABELS) FLAP DOWN ON TOP OF SEALED BOX. SECURE WITH TAPE SPECIFICATION PPP-T-60, TYPE III, CLASS 2, ALONG CENTER SEAM ONLY.
6. MARKING SHALL BE IN ACCORDANCE WITH STANDARD MIL-STD-129, AND SHALL BE CONFINED TO SHIPPING TAG (MS18024-1). DO NOT MARK ON CONTAINER.
7. SEALS (MS18018-1) TO BE LOCATED ON DIAGONALLY OPPOSITE CORNER LATCHES, AS SHOWN.
8. CONTENTS LABEL (MS18021-1) SHALL BE PLACED ON TOP SURFACE OF CONTAINER, AS SHOWN.
9. SHIPPING TAG SHALL BE LOCATED AS SHOWN. ATTACH BY THREADING WIRE THRU HOLES PROVIDED FOR SEALS.
10. IF OVERPACKED TO SHIP MORE THAN ONE CONTAINER AT A TIME, THE SHIPPING DATA WILL BE PLACED ON THE OUTSIDE OF THE OVERPACK.
11. SHIPPING CONTAINER AND NO TAG IS REQUIRED.
12. APPROXIMATE CUBAGE - 0.64 CUBIC FEET.
13. DIMENSIONS IN INCHES.
14. UNLESS OTHERWISE SPECIFIED, THIS STANDARD IS IN EFFECT ON DATE OF INVITATIONS FOR BID.
15. FOR DESIGN FEATURE PURPOSES THIS STANDARD TAKES PRECEDENCE OVER ANY CURRENT DOCUMENTS REFERENCED HEREIN.

P.A. 2177-1		MILITARY STANDARD	
C.A. 107		MS18011(WP)	
FRODOLENY SPECIFICATION		SHEET 17 OF	
SUPERSEDES		SHEET NO. 2210512	
CONTRACTS, CHAIRMAN, AUGUST 1964		HARD POWDER - READY FOR SHIPPING	

APPROVED REVISED (A) PER CMA GES SIT SHEETS 7 9 10



1. DECALCOMANIA (MS18017-1) TO BE CENTRALLY LOCATED, AS SHOWN.
2. RETURN LABELS (MS18025-1) SHALL BE IN STRIP FORM. INSERT INTO ENVELOPE (MS18022-1), FOLD END FLAP AND PLACE IN BOX (MS18023-18)
3. INSICANT SHALL BE IN ACCORDANCE WITH SPECIFICATION MIL-P-3464, AND SHALL BE PLACED IN CONTAINER AT TIME OF PACKAGING COMPONENT. QUANTITY AND METHOD OF SECURING SHALL BE IN ACCORDANCE WITH SPECIFICATION MIL-P-116.
4. BEFORE INSERTING COMPONENT IN BOX, REMOVE ENVELOPE CONTAINING LABELS. PLACE COMPONENT IN BOX, WITH NECESSARY BLOCKING AND BRACING IN ACCORDANCE WITH CONTRACT PACKAGING PLAN SUPPLEMENT SEAL BOX WITH ONE STRIP OF TAPE, SPECIFICATION PPP-T-70, OVER CENTER SEAM ONLY. TAPE SHALL EXTEND OVER ENDS OF BOX 1/2 INCH MINIMUM
5. PLACE ENVELOPE (WITH LABELS) FLAP DOWN ON TOP OF SEALED BOX. SECURE WITH TAPE SPECIFICATION PPP-T-60, TYPE III, CLASS 2, ALONG CENTER SEAM ONLY
6. MARKING SHALL BE IN ACCORDANCE WITH STANDARD MIL-STD-129, AND SHALL BE CONFINED TO SHIPPING TAG (MS18024-1) DO NOT MARK ON CONTAINER.
7. SEALS (MS18018-1) TO BE LOCATED ON DIAGONALLY OPPOSITE CORNER LATCHES, AS SHOWN.
8. CONTENTS LABEL (MS18021-1) SHALL BE PLACED ON TOP SURFACE OF CONTAINER, AS SHOWN.
9. SHIPPING TAG SHALL BE LOCATED AS SHOWN. ATTACH BY THREADING WIRE THRU HOLES PROVIDED FOR SEALS
10. IF OVERPACKED TO SHIP MORE THAN ONE CONTAINER AT A TIME, THE SHIPPING DATA WILL BE PLACED ON THE OUTSIDE OF THE OVERPACK SHIPPING CONTAINER AND NO TAG IS REQUIRED
11. APPROXIMATE CUBAGE = 0.74 CUBIC FEET.
12. DIMENSIONS IN INCHES.
13. REFERENCED DOCUMENTS SHALL BE OF THE ISSUE IN EFFECT ON DATE OF INVITATIONS FOR BID.
14. FOR DESIGN FEATURE PURPOSES THIS STANDARD TAKES PRECEDENCE OVER PREVIOUS EDITIONS OF DOCUMENTS REFERENCED HEREIN

P A NAVY-OP Other Cost	TITLE CONTAINERS, REUSABLE, ALUMINUM HAND PORTABLE - ASSEMBLY FOR SHIPPING	MILITARY STANDARD MS18011(WP)
PROCUREMENT SPECIFICATION 30 no.	SUPersedes NAVY-OP DWG NO. 2210513	SHEET 18 OF

APPROVED

SCHEMATIC DRAWING OF MILITARY STANDARD MS18011-19, showing three views: Top View, Side View, and Front View. The drawing includes dimensions and labels for various components.

Top View Dimensions:
 Length: 11.750
 Width: 10.250

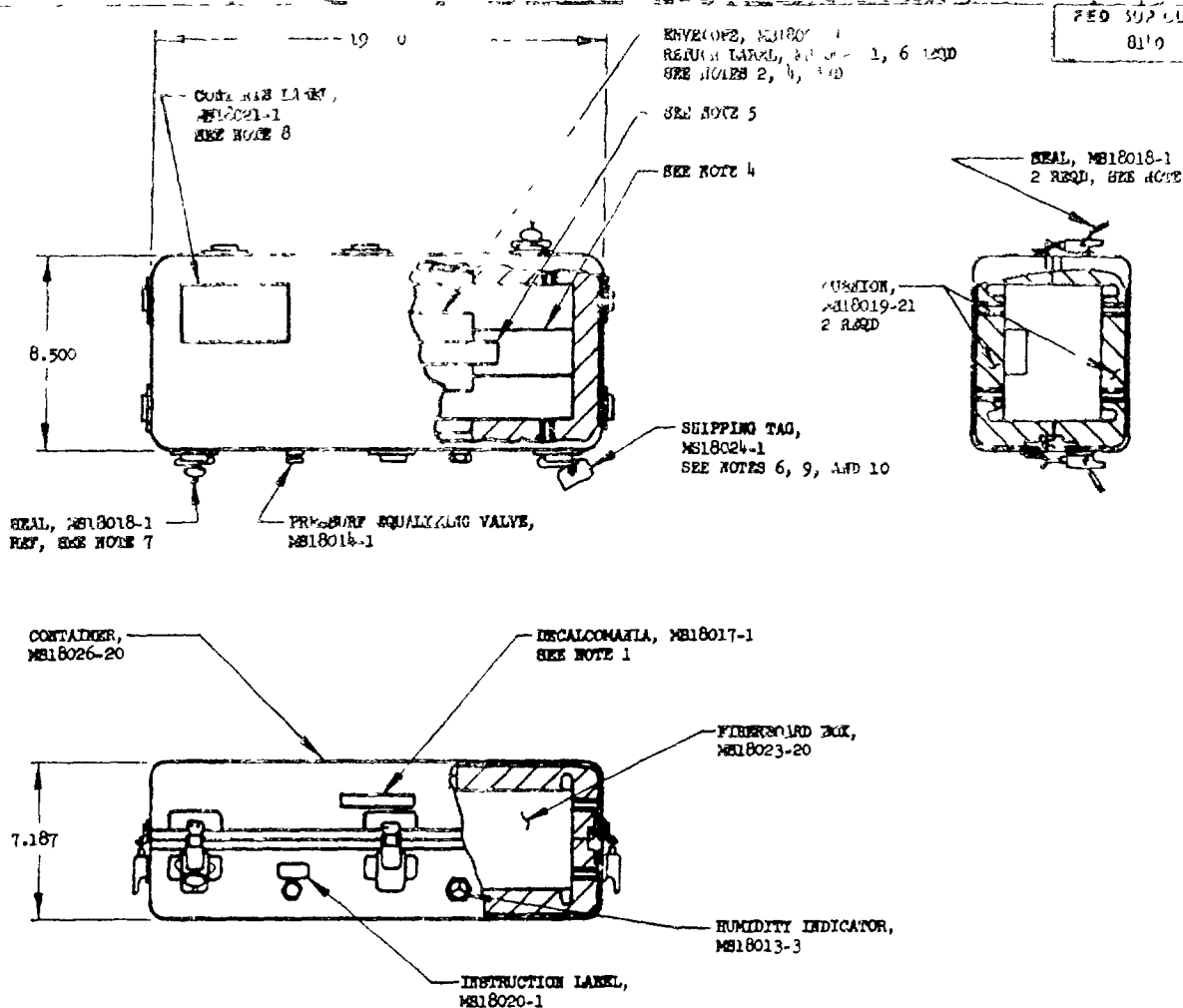
Side View Dimensions:
 Height: 9.68"

Labels and Components:
 - SEAL, MS18018-1 (REF. SEE NOTE 7)
 - PRESSURE EQUALIZING VALVE, MS18014-1
 - ENVELOPE, MS18022-1
 - RETURN LABELS, MS18025-1, 8 REQD (SEE NOTES 2, 4, AND 5)
 - SHIPPING TAG, MS18024-1 (SEE NOTES 6, 9, AND 10)
 - FIBERBOARD BOX, MS18023-19
 - DECALCOMANIA, MS18017-1 (SEE NOTE 1)
 - INSTRUCTION LABEL, MS18020-1
 - HUMIDITY INDICATOR, MS18013-3
 - CONTAINER, MS18026-19
 - CUSHION, MS18019-20 (2 REQD)

MS PART NO.
 MS18011-19

NOTES:
 1. DECALCOMANIA (MS18017-1) TO BE CENTRALLY LOCATED, AS SHOWN.
 2. RETURN LABELS (MS18025-1) SHALL BE IN STRIP FORM. INSERT INTO ENVELOPE (MS18022-1), FOLD END FLAP AND PLACE IN BOX (MS18023-19).
 3. PRESSICANT SHALL BE IN ACCORDANCE WITH SPECIFICATION MIL-D-3464, AND SHALL BE PLACED IN CONTAINER AT TIME OF PACKAGING COMPONENT. QUANTITY AND METHOD OF SECURING SHALL BE IN ACCORDANCE WITH SPECIFICATION MIL-P-116.
 4. BEFORE INSERTING COMPONENT IN BOX, REMOVE ENVELOPE CONTAINING LABELS. PLACE COMPONENT IN BOX, WITH NECESSARY BLOCKING AND BRACING IN ACCORDANCE WITH CONTRACT PACKAGING PLAN SUPPLEMENT. SEAL BOX WITH ONE STRIP OF TAPE, SPECIFICATION PFF-T-76, OVER CENTER SEAM ONLY. TAPE SHALL EXTEND OVER ENDS OF BOX 1/2 INCH MINIMUM.
 5. PLACE ENVELOPE (WITH LABELS) FLAP DOWN ON TOP OF SEALED BOX. SECURE WITH TAPE SPECIFICATION PFF-T-60, TYPE III, CLASS 2, ALONG CENTER SEAM ONLY.
 6. MARKING SHALL BE IN ACCORDANCE WITH STANDARD MIL-STD-129, AND SHALL BE CONFINED TO SHIPPING TAG (MS18024-1). DO NOT MARK ON CONTAINER.
 7. SEALS (MS18018-1) TO BE LOCATED ON DIAGONALLY OPPOSITE CORNER LATCHES, AS SHOWN.
 8. CONTENTS LABEL (MS18021-1) SHALL BE PLACED ON TOP SURFACE OF CONTAINER, AS SHOWN.
 9. SHIPPING TAG SHALL BE LOCATED AS SHOWN. ATTACH BY THREADING WIRE THRU HOLES PROVIDED FOR SEALS.
 10. IF OVERPACKED TO SHIP MORE THAN ONE CONTAINER AT A TIME, THE SHIPPING DATA WILL BE PLACED ON THE OUTSIDE OF THE OVERPACK SHIPPING CONTAINER AND NO TAG IS REQUIRED.
 11. APPROXIMATE CUBAGE - 0.78 CUBIC FEET.
 12. DIMENSIONS IN INCHES.
 13. UNCLASSIFIED DOCUMENTS SHALL BE OF THE ISSUE IN EFFECT ON DATE OF INVITATIONS FOR BID.
 14. THIS DRAWING IS FOR INFORMATION PURPOSES ONLY. THE STANDARD TAKES PRECEDENCE OVER PREVIOUS EDITIONS OF THIS DRAWING.

NOTICE—When Government drawings, specifications, or other data are used for any purpose other than in connection with a specific contract with the Government, the United States Government hereby incurs no responsibility for any obligation whatsoever, and the fact that the Government may have furnished information or in any way supplied the said drawings, specifications, or other data is not to be regarded by implication or otherwise as in any manner licensing the holder or any other person or corporation to convey any rights or permission to manufacture use or sell any patented invention that may in any way be related thereto.



NOTES:

1. DECALCOMANIA (MS18017-1) TO BE CENTRALLY LOCATED, AS SHOWN.
2. RETURN LABELS (MS18025-1) SHALL BE IN STRIP FORM. INSERT INTO ENVELOPE (MS18022-1), FOLD END FLAP AND PLACE IN BOX (MS18023-20).
3. DESICCANT SHALL BE IN ACCORDANCE WITH SPECIFICATION MIL-D-3464, AND SHALL BE PLACED IN CONTAINER AT TIME OF PACKAGING COMPONENT. QUANTITY AND METHOD OF SECURING SHALL BE IN ACCORDANCE WITH SPECIFICATION MIL-P-116.
4. BEFORE INSERTING COMPONENT IN BOX, REMOVE ENVELOPE CONTAINING LABELS. PLACE COMPONENT IN BOX, WITH NECESSARY BLOCKING AND BRACING IN ACCORDANCE WITH CONTRACT PACKAGING PLAN SUPPLEMENT. SEAL BOX WITH ONE STRIP OF TAPE, SPECIFICATION PPP-T-76, OVER CENTER SEAM ONLY. TAPE SHALL EXTEND OVER ENDS OF BOX 1/2 INCH MINIMUM.
5. PLACE ENVELOPE (WITH LABELS) FLAP DOWN ON TOP OF SEALED BOX. SECURE WITH TAPE SPECIFICATION PPP-T-60, TYPE III, CLASS 2, ALONG CENTER SEAM ONLY.
6. MARKING SHALL BE IN ACCORDANCE WITH STANDARD MIL-STD-129, AND SHALL BE CONFINED TO SHIPPING TAG (MS18024-1). DO NOT MARK ON CONTAINER.
7. SEALS (MS18018-1) TO BE LOCATED ON DIAGONALLY OPPOSITE CORNER LATCHES, AS SHOWN.
8. CONTENTS LABEL (MS18021-1) SHALL BE PLACED ON TOP SURFACE OF CONTAINER, AS SHOWN.
9. SHIPPING TAG SHALL BE LOCATED AS SHOWN. ATTACH BY THREADING WIRE THRU HOLES PROVIDED FOR SEALS.
10. IF OVERPACKED TO SHIP MORE THAN ONE CONTAINER AT A TIME, THE SHIPPING DATA WILL BE PLACED ON THE OUTSIDE OF THE OVERPACK SHIPPING CONTAINER AND NO TAG IS REQUIRED.
11. APPROXIMATE CUBAGE = 0.88 CUBIC FEET.
12. DIMENSIONS IN INCHES.
13. REFERENCED DOCUMENTS SHALL BE OF THE ISSUE IN EFFECT ON DATE OF INVITATIONS FOR BID.
14. FOR DESIGN FEATURE PURPOSES THIS STANDARD TAKES PRECEDENTS OVER PROCUREMENT DOCUMENTS REFERENCED HEREIN.

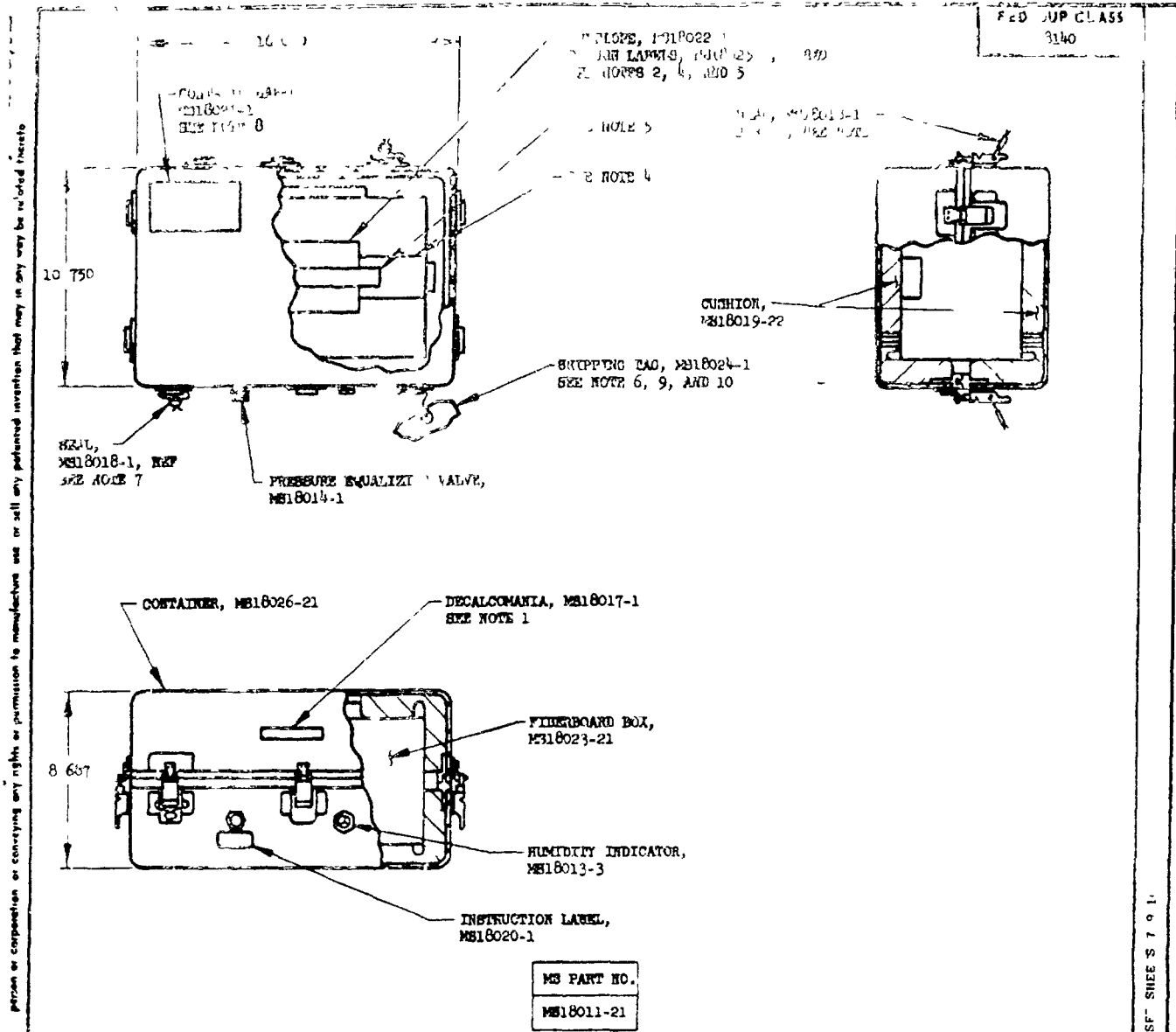
PA NAVY-7P	TITLE	MILITARY STANDARD
Other Cost	CONTAINERS, REUSABLE, ALUMINUM HAND PORTABLE - ASSEMBLY FOR SHIPPING	MS18011(WP)
PROCUREMENT SPECIFICATION None.	SUPERSEDES BUREAU ENG NO. 2210515	SHEET 20 OF

DD FORM 6/2-1 (Limited circulation)

PREVIOUS EDITIONS OF THIS STANDARD ARE OBSOLETE

REVISED 1 31 PROVED 1 31 (A) R R CHANGES SHEETS 1, 2, 3, 4

1. This standard is a part of the Bureau of Naval Weapons, and is mandatory for use by all activities. All other military activities are required to employ this standard where suitable.



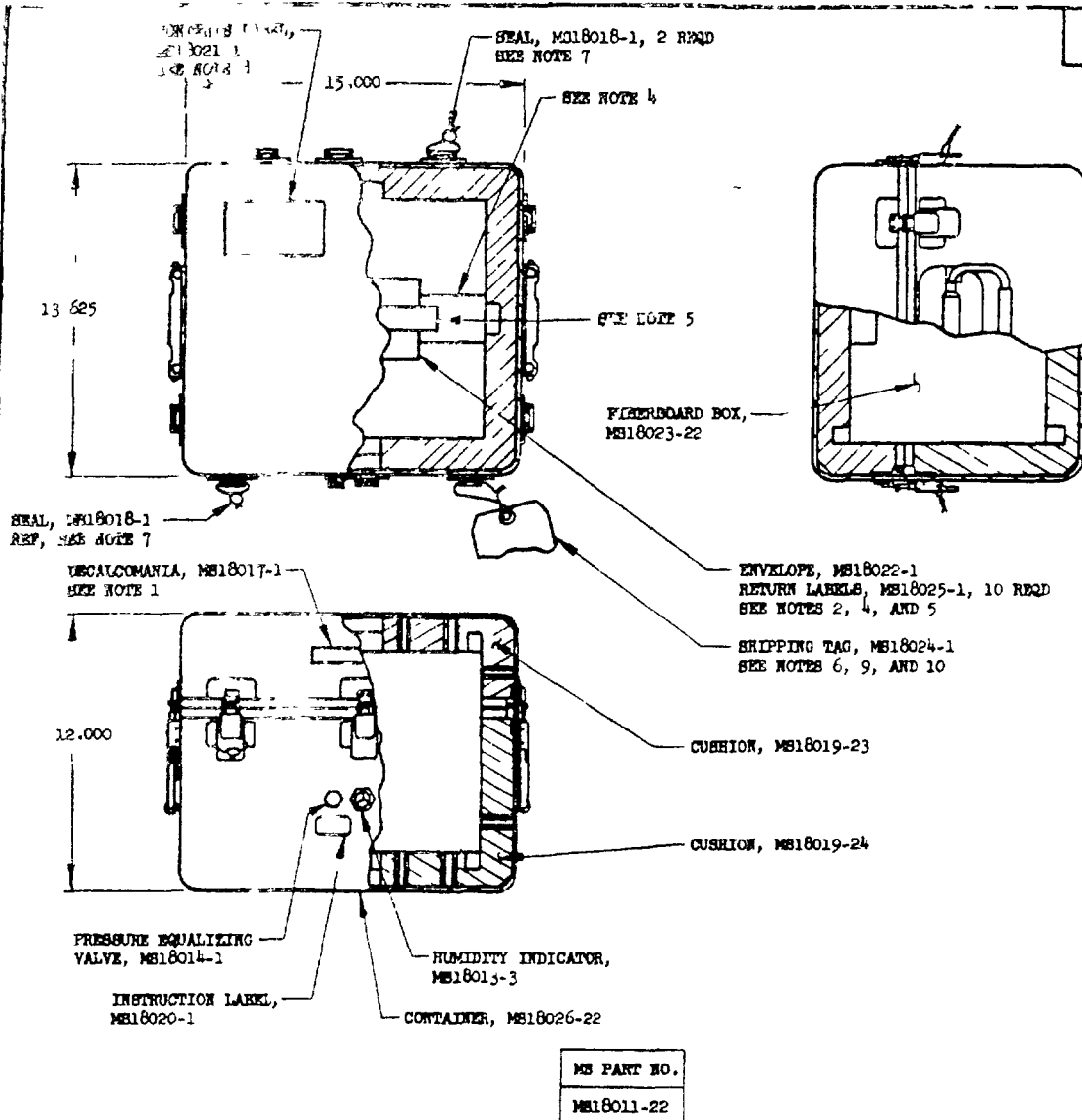
NOTES

1. DECALCOMANIA (MS18017-1) TO BE CENTRALLY LOCATED, AS SHOWN.
 2. RETURN LABELS (MS18025-1) SHALL BE IN STRIP FORM. INSERT INTO ENVELOPE (MS18022-1), FOLD END FLAP AND PLACE IN BOX (MS18023-21).
 3. DEWICANT SHALL BE IN ACCORDANCE WITH SPECIFICATION MIL-D-3464, AND SHALL BE PLACED IN CONTAINER AT TIME OF PACKAGING COMPONENT QUANTITY AND METHOD OF SECURING SHALL BE IN ACCORDANCE WITH SPECIFICATION MIL-P-116.
 4. BEFORE INSERTING COMPONENT IN BOX, REMOVE ENVELOPE CONTAINING LABELS. PLACE COMPONENT IN BOX, WITH NECESSARY BLOCKING AND BRACING IN ACCORDANCE WITH CONTRACT PACKAGING PLAN SUPPLEMENT. SEAL BOX WITH ONE STRIP OF TAPE, SPECIFICATION PPP-T-76, OVER CENTER SEAM ONLY. TAPE SHALL EXTEND OVER ENDS OF BOX 1/2 INCH MINIMUM.
 5. PLACE ENVELOPE (WITH LABELS) FLAP DOWN ON TOP OF SEALED BOX. SECURE WITH TAPE SPECIFICATION PPP-T-60, TYPE III, CLASS 2, ALONG CENTER SEAM ONLY.
 6. MARKING SHALL BE IN ACCORDANCE WITH STANDARD MIL-STD-129, AND SHALL BE CONFINED TO SHIPPING TAG (MS18024-1). DO NOT MARK ON CONTAINER.
 7. SEALS (MS18018-1) TO BE LOCATED ON DIAGONALLY OPPOSITE CORNER LATCHES, AS SHOWN.
 8. CONTENTS LABEL (MS18021-1) SHALL BE PLACED ON TOP SURFACE OF CONTAINER, AS SHOWN.
 9. SHIPPING TAG SHALL BE LOCATED AS SHOWN. ATTACH BY THREADING WIRE THRU HOLES PROVIDED FOR SEALS.
 10. IF OVERPACKED TO SHIP MORE THAN ONE CONTAINER AT A TIME, THE SHIPPING DATA WILL BE PLACED ON THE OUTSIDE OF THE OVERPACK. SHIPPING CONTAINER AND NO TAG IS REQUIRED.
 11. APPROXIMATE CUBAGE = 0.92 CUBIC FEET.
 12. DIMENSIONS IN INCHES.
 13. REFERENCED DOCUMENTS SHALL BE OF THE ISSUE IN EFFECT ON DATE OF INVITATIONS FOR BID.
- FOR DESIGN FEATURE PURPOSES THIS STANDARD TAKES PRECEDENTS OVER PREVIOUS EDITIONS OF THIS STANDARD.

P. 1. 1018022-1 CONTAINER	TITLE CONTAINER, TUBAGE, ALUMINUM HAND PORTABLE - ASSEMBLY FOR SHIP PART	MILITARY STANDARD MS18011(WP)
PROCUREMENT SPECIFICATION None	SUPERSEDES BUYING INQ NO. 2217516	SHEET 21 OF

REVISED (A P R CHANG) SF SHEET 21 OF 1
APPROVED 2 JAN 1

operation the United States Government thereby incurs no responsibility nor any obligation whatsoever and the fact that the Government may have formulated (unpublished or in any way supplied the said drawings specifications or other data is not to be regarded by implication or otherwise as in any manner favoring the holder as any other person or corporation or conveying any rights or permission to manufacture use or sell any patented invention that may in any way be related thereto



NOTES:

1. DECALCOMANIA (MS18017-1) TO BE CENTRALLY LOCATED, AS SHOWN.
2. RETURN LABELS (MS18025-1) SHALL BE IN STRIP FORM INSERT INTO ENVELOPE (MS18022-1), FOLD END FLAP AND PLACE IN BOX (MS18023-22).
3. DESICCANT SHALL BE IN ACCORDANCE WITH SPECIFICATION MIL-D-3464, AND SHALL BE PLACED IN CONTAINER AT TIME OF PACKAGING COMPONENT. QUANTITY AND METHOD OF SECURING SHALL BE IN ACCORDANCE WITH SPECIFICATION MIL-P-116.
4. BEFORE INSERTING COMPONENT IN BOX, REMOVE ENVELOPE CONTAINING LABELS. PLACE COMPONENT IN BOX, WITH NECESSARY BLOCKING AND BRACING IN ACCORDANCE WITH CONTRACT PACKAGING PLAN SUPPLEMENT SEAL BOX WITH ONE STRIP OF TAPE, SPECIFICATION PPP-T-76, OVER CENTER SEAM ONLY. TAPE SHALL EXTEND OVER ENDS OF BOX 1/2 INCH MINIMUM.
5. PLACE ENVELOPE (WITH LABELS) FLAP DOWN ON TOP OF SEALED BOX SECURE WITH TAPE SPECIFICATION PPP-T-60, TYPE III, CLASS 2, ALONG CENTER SEAM ONLY.
6. MARKING SHALL BE IN ACCORDANCE WITH STANDARD MIL-STD-129, AND SHALL BE CONFINED TO SHIPPING TAG (MS18024-1). DO NOT MARK ON CONTAINER.
7. SEALS (MS18018-1) TO BE LOCATED ON DIAGONALLY OPPOSITE CORNER LATCHES, AS SHOWN.
8. CONTENTS LABEL (MS18021-1) SHALL BE PLACED ON TOP SURFACE OF CONTAINER, AS SHOWN.
9. SHIPPING TAG SHALL BE LOCATED AS SHOWN. ATTACH BY THREADING WIRE THRU HOLES PROVIDED FOR SEALS.
10. IF OVERPACKED TO SHIP MORE THAN ONE CONTAINER AT A TIME, THE SHIPPING DATA WILL BE PLACED ON THE OUTSIDE OF THE OVERPACK SHIPPING CONTAINER AND NO TAG IS REQUIRED.
11. APPROXIMATE CUBAGE = 1.61 CUBIC FEET.
12. DIMENSIONS IN INCHES.
13. REFERENCED DOCUMENTS SHALL BE OF THE ISSUE IN EFFECT ON DATE OF INVITATIONS FOR BID.
14. FOR DESIGN FEATURE PURPOSES THIS STANDARD TAKES PRECEDENCE OVER PROCUREMENT DOCUMENTS REFERENCED HEREIN.

NAVY and is mandatory for use by all other military activities are required to employ this standard where suitable

P. A. NAVY-EP Other Cust	TITLE CONTAINERS, REUSABLE, ALUMINUM HAND PORTABLE - ASSEMBLY FOR SHIPPING	MILITARY STANDARD MS18011(WP)
PROCUREMENT SPECIFICATION Spec.	SUPERSEDES UNIFORM NO. 2210517	SHEET 22

DD FORM 672-1 (Limited Use/Original)

PREVIOUS EDITIONS OF THIS STANDARD ARE OBSOLETE

APPROVED 2 13 REVISED 1 13 FOR CHARTS SET SHEETS 1 13

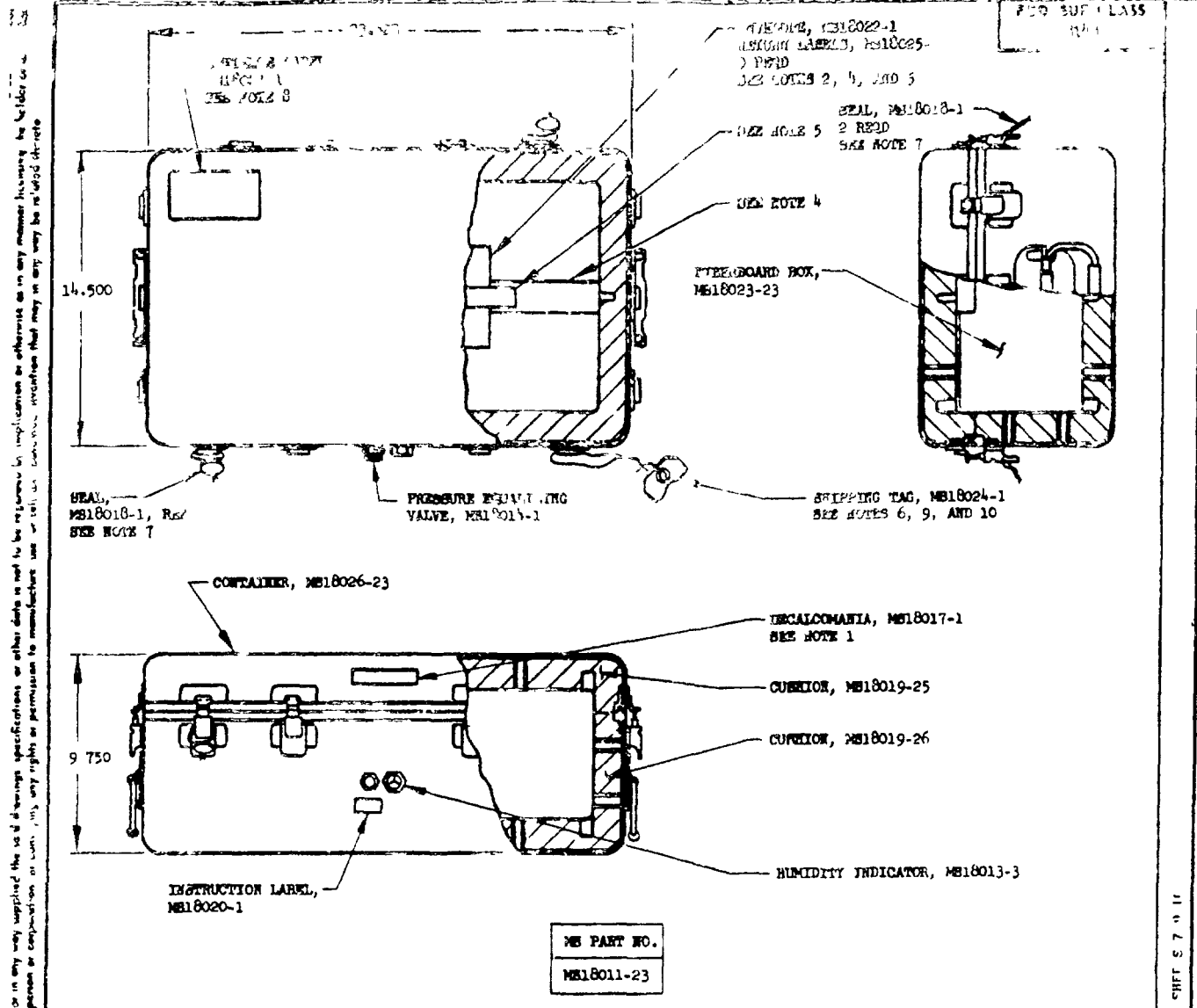


FIGURE 1.

1. DECALCOMANIA (MS18017-1) TO BE CENTRALLY LOCATED, AS SHOWN.
2. RETURN LABELS (MS18025-1) SHALL BE IN STRIP FORM. INSERT INTO ENVELOPE (MS18022-1), FOLD END FLAP AND PLACE IN BOX (MS18023-23).
3. INSIGNIA SHALL BE IN ACCORDANCE WITH SPECIFICATION MIL-D-346A, AND SHALL BE PLACED IN CONTAINER AT TIME OF PACKAGING COMPONENT. QUANTITY AND METHOD OF SECURING SHALL BE IN ACCORDANCE WITH SPECIFICATION MIL-P-116.
4. BEFORE INSERTING COMPONENT IN BOX, REMOVE ENVELOPE CONTAINING LABELS. PLACE COMPONENT IN BOX, WITH NECESSARY BLOCKING AND BRACING IN ACCORDANCE WITH CONTRACT PACKAGING PLAN SUPPLEMENT. SEAL BOX WITH ONE STRIP OF TAPE, SPECIFICATION PPP-T-76, OVER CENTER BEAM ONLY. TAPE SHALL EXTEND OVER ENDS OF BOX 1/2 INCH MINIMUM.
5. PLACE ENVELOPE (WITH LABELS) FLAP DOWN ON TOP OF SEALED BOX. SECURE WITH TAPE SPECIFICATION PPP-T-60, TYPE III, CLASS 2, ALONG CENTER BEAM ONLY.
6. MARKING SHALL BE IN ACCORDANCE WITH STANDARD MIL-STD-129, AND SHALL BE CONFINED TO SHIPPING TAG (MS18024-1). DO NOT MARK ON CONTAINER.
7. SEALS (MS18018-1) TO BE LOCATED ON DIAGONALLY OPPOSITE CORNER LATCHES, AS SHOWN.
8. CONTENTS LABEL (MS18021-1) SHALL BE PLACED ON TOP SURFACE OF CONTAINER, AS SHOWN.
9. SHIPPING TAG SHALL BE LOCATED AS SHOWN. ATTACH BY THREADING WIRE THRU HOLES PROVIDED FOR SEALS.
10. IF OVERPACKED TO SHIP MORE THAN ONE CONTAINER AT A TIME, THE SHIPPING DATA WILL BE PLACED ON THE OUTSIDE OF THE OVERPACK. SHIPPING CONTAINER AND NO TAG IS REQUIRED.
11. APPROXIMATE CUBAGE = 2.14 CUBIC FEET.
12. DIMENSIONS IN INCHES.
13. REFERENCED DOCUMENTS SHALL BE OF THE ISSUE IN EFFECT ON DATE OF INVITATIONS FOR BID.
14. FOR DESIGN CAPTURE PURPOSES THIS STANDARD TAKES PRECEDENCE OVER PROCUREMENT DOCUMENTS REFERENCED HEREIN.

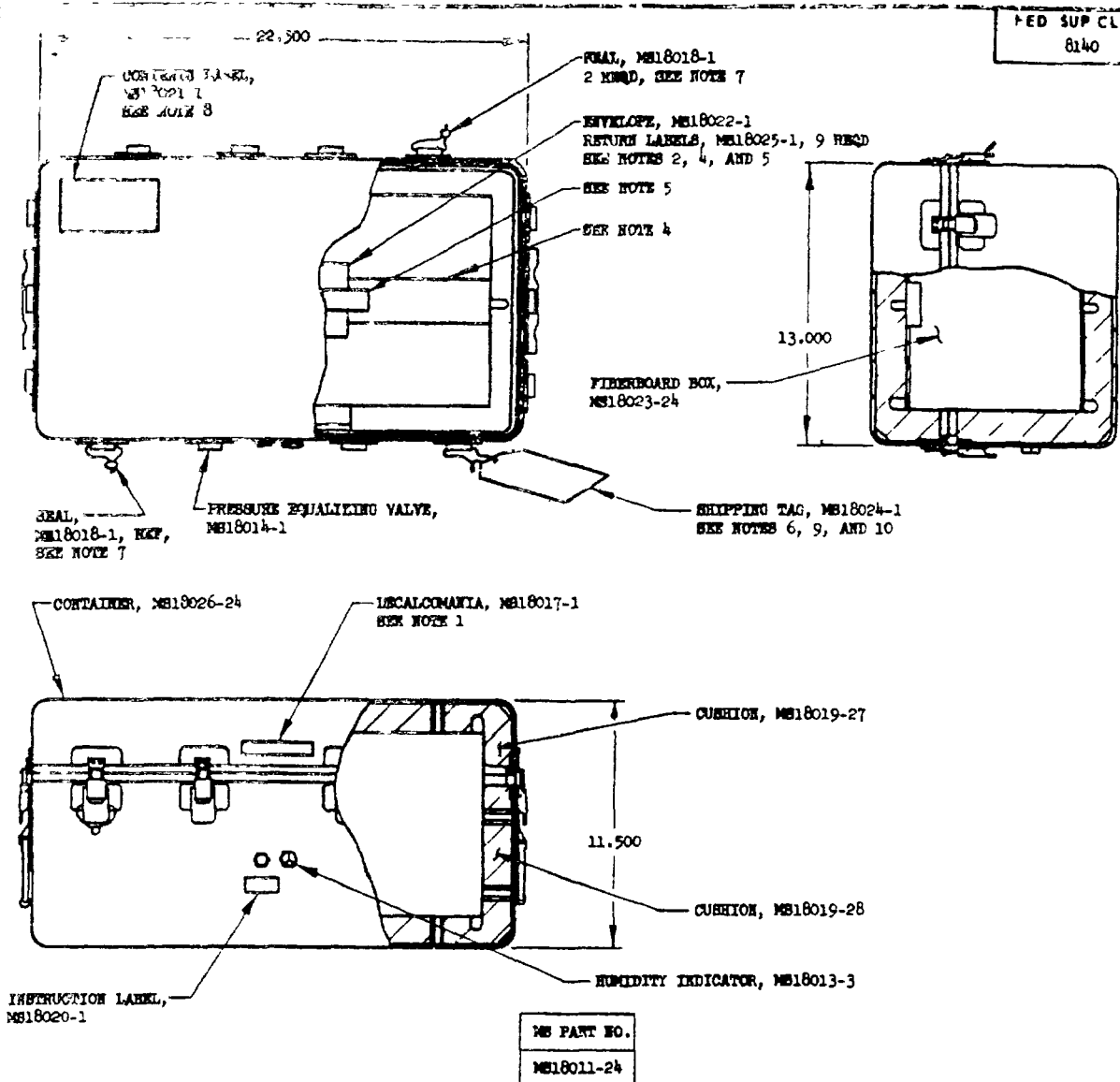
REVISED 2 11

APPROVED 2 11

REVISION 15 SEP 57 11

PROJECT AND SPECIFICATION	TITLE	MILITARY STANDARD
MS18011-23	CONTAINER, RETURN, NIGHT VISION PORTABLE, ASSEMBLY FOR SHIPMENT	MS18011(WP)
SUPPLEMENT	REVISIONS	SHEET 23 OF
DOWNSIDE DMC NO. 2210518		

NOTICE—When Government drawings, specifications, or other data are used for any purpose other than in connection with a definite, written Government procurement, the use of such data is not to be construed as an endorsement, approval, or recommendation of the United States Government, nor is it to be construed as an endorsement, approval, or recommendation of any person or corporation or conveying any rights or permission to manufacture or use or sell any patented invention that may in any way be related thereto.



NOTES:

1. DECALCOMANIA (MS18017-1) TO BE CENTRALLY LOCATED, AS SHOWN.
2. RETURN LABELS (MS18025-1) SHALL BE IN STRIP FORM. INSERT INTO ENVELOPE (MS18022-1), FOLD END FLAP AND PLACE IN BOX (MS18023-24).
3. DESICCANT SHALL BE IN ACCORDANCE WITH SPECIFICATION MIL-D-3464, AND SHALL BE PLACED IN CONTAINER AT TIME OF PACKAGING COMPONENT. QUANTITY AND METHOD OF SECURING SHALL BE IN ACCORDANCE WITH SPECIFICATION MIL-P-116.
4. BEFORE INSERTING COMPONENT IN BOX, REMOVE ENVELOPE CONTAINING LABELS. PLACE COMPONENT IN BOX, WITH NECESSARY BLOCKING AND BRACING IN ACCORDANCE WITH CONTRACT PACKAGING PLAN OUTLINE. SEAL BOX WITH ONE STRIP OF TAPE, SPECIFICATION PPP-T-76, OVER CENTER SEAM ONLY. TAPE SHALL EXTEND OVER ENDS OF BOX 1/2 INCH MINIMUM.
5. PLACE ENVELOPE (WITH LABELS) FLAP DOWN ON TOP OF SEALED BOX. SECURE WITH TAPE SPECIFICATION PPP-T-60, TYPE III, CLASS 2 ALONG CENTER SEAM ONLY.
6. MARKING SHALL BE IN ACCORDANCE WITH STANDARD MIL-STD-129, AND SHALL BE CONFINED TO SHIPPING TAG (MS18024-1). NO NOT MARK ON CONTAINER.
7. SEALS (MS18018-1) TO BE LOCATED ON DIAGONALLY OPPOSITE CORNER LATCHES, AS SHOWN.
8. CONTENTS LABEL (MS18021-1) SHALL BE PLACED ON TOP SURFACE OF CONTAINER, AS SHOWN.
9. SHIPPING TAG SHALL BE LOCATED AS SHOWN. ATTACH BY THREADING WIRE THRU HOLES PROVIDED FOR SEALS.
10. IF OVERPACKED TO SHIP MORE THAN ONE CONTAINER AT A TIME, THE SHIPPING DATA WILL BE PLACED ON THE OUTSIDE OF THE OVERPACK. SHIPPING CONTAINER AND NO TAG IS REQUIRED.
11. APPROXIMATE CUBAGE = 2.17 CUBIC FEET.
12. DIMENSIONS IN INCHES.
13. REFERENCED DOCUMENTS SHALL BE OF THE ISSUE IN EFFECT ON DATE OF INVITATIONS FOR BID.

THIS DESIGN FEATURE PURPOSES THIS STANDARD TAKES PRECEDENCE OVER PREVIOUS DOCUMENTS WHERE APPLICABLE.

P A	NAVI-W.	TITLE	MILITARY STANDARD
Other Cost		CONTAINERS, REUSABLE, ALUMINUM HAND TO-TAIL - ASSEMBLY FOR SHIPPING	MS18011(WP)
PROCUREMENT SPECIFICATION None.	SUPPLIES	UNCLASSIFIED NO. 2210510	SHEET 24 6

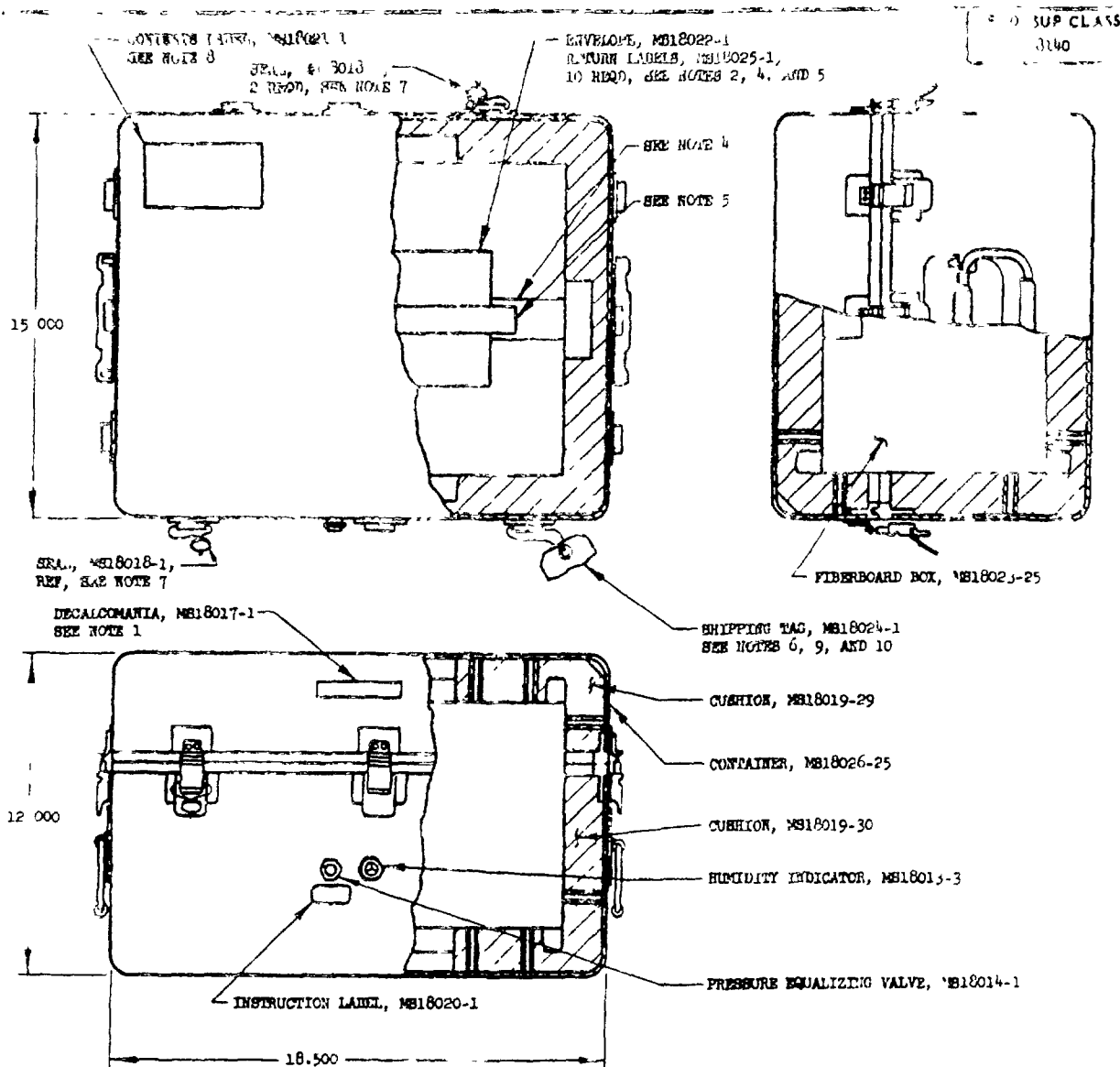
DD FORM 672-1 (20100101)

PROVIDED BY THE U.S. GOVERNMENT

REVISED 1 A PER CHANGES DEF SHEET 7 9 16

This document has been approved by the Bureau of Naval Weapons, Department of the Navy, and is mandatory for use by all activities. All other military activities are required to employ this standard where suitable.

in any way supplied the said drawings, specification, or other data, it shall be required by the Government to indemnify the Government for any and all claims, damages, costs, and expenses, including reasonable attorney's fees, which may be incurred by the Government in any way arising out of or from the use of the said drawings, specification, or other data, in any way supplied by the Government, or in any way arising out of or from the use of the said drawings, specification, or other data, in any way supplied by the Government, or in any way arising out of or from the use of the said drawings, specification, or other data, in any way supplied by the Government.



MS PART NO.
MS18011-25

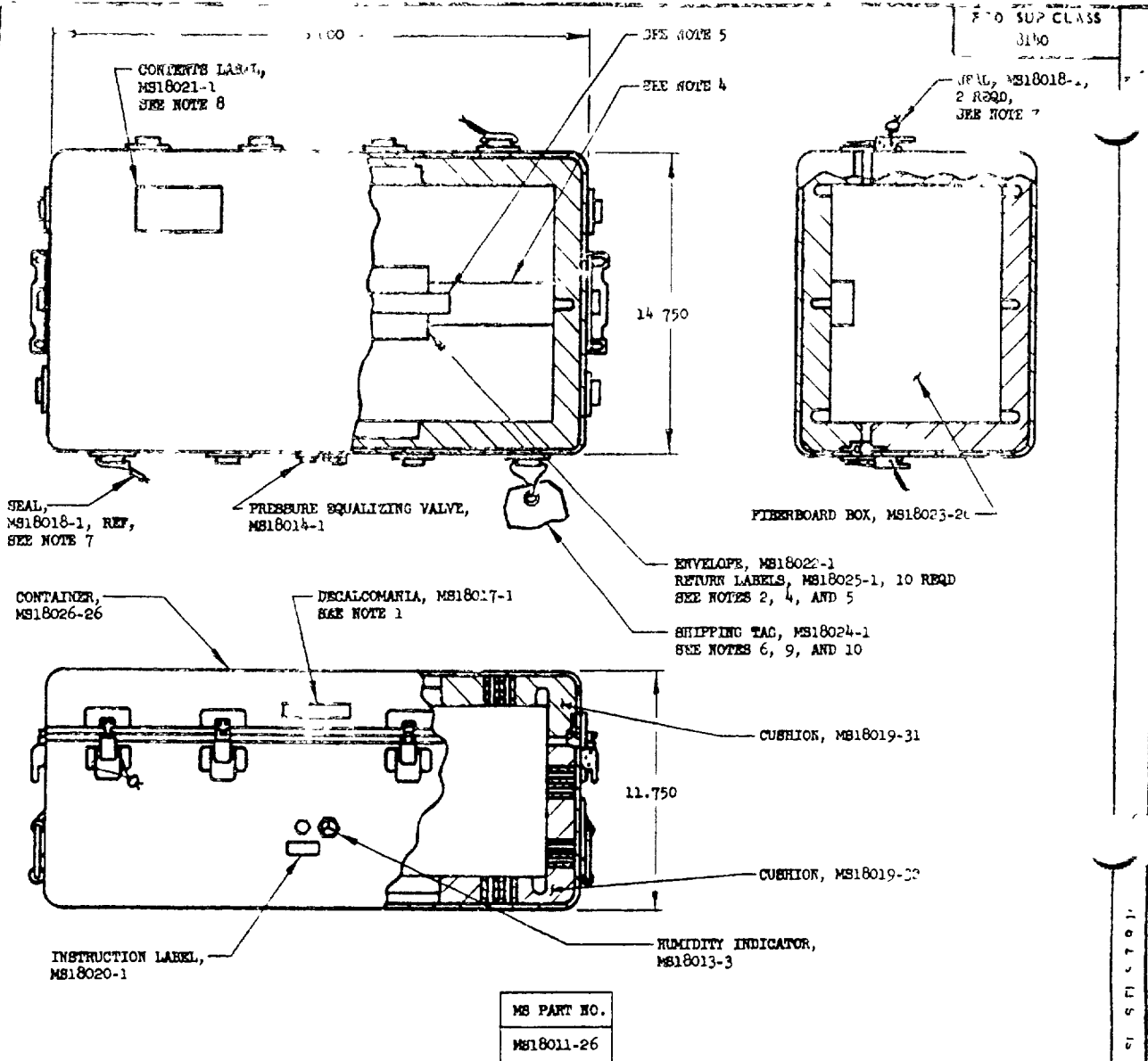
- NOTES
1. DECALCOMANIA (MS18017-1) TO BE CENTRALLY LOCATED, AS SHOWN.
 2. RETURN LABEL (MS18025-1) SHALL BE IN STRIP FORM. INSERT INTO ENVELOPE (MS18022-1), FOLD END FLAP AND PLACE IN BOX (MS18023-25).
 3. DESICCANT SHALL BE IN ACCORDANCE WITH SPECIFICATION MIL-D-3464, AND SHALL BE PLACED IN CONTAINER AT TIME OF PACKAGING COMPONENT. QUANTITY AND METHOD OF SECURING SHALL BE IN ACCORDANCE WITH SPECIFICATION MIL-P-116.
 4. BEFORE INSERTING COMPONENT IN BOX, REMOVE ENVELOPE CONTAINING LABELS. PLACE COMPONENT IN BOX, WITH NECESSARY BLOCKING AND BRACING IN ACCORDANCE WITH CONTRACT PACKAGING PLAN SUPPLEMENT. SEAL BOX WITH ONE STRIP OF TAPE, SPECIFICATION PPP-T-76, OVER CENTER SEAM ONLY. TAPE SHALL EXTEND OVER ENDS OF BOX 1/2 INCH MINIMUM.
 5. PLACE ENVELOPE (WITH LABELS) FLAP DOWN ON TOP OF SEALED BOX. SECURE WITH TAPE SPECIFICATION PPP-T-60, TYPE III, CLASS 2, ALONG CENTER SEAM ONLY.
 6. MARKING SHALL BE IN ACCORDANCE WITH STANDARD MIL-STD-129, AND SHALL BE CONTAINED TO SHIPPING TAG (MS18024-1). DO NOT MARK ON CONTAINER.
 7. SEALS (MS18018-1) TO BE LOCATED ON DIAGONALLY OPPOSITE CORNER LATCHES, AS SHOWN.
 8. CONTAINER LABEL (MS18021-1) SHALL BE PLACED ON TOP SURFACE OF CONTAINER, AS SHOWN.
 9. SHIPPING TAG SHALL BE LOCATED AS SHOWN. ATTACH BY THREADING WIRE THRU HOLES PROVIDED FOR SEALS.
 10. IF OVERPACKED TO SHIP MORE THAN ONE CONTAINER AT A TIME, THE SHIPPING DATA WILL BE PLACED ON THE OUTSIDE OF THE OVERPACK. SHIPPING CONTAINER AND NO TAG IS REQUIRED.
 11. APPROXIMATE CUBAGE = 2.15 CUFT.
 12. DIMENSIONS IN INCHES.
 13. REFERENCED DOCUMENTS SHALL BE OF THE ISSUE IN EFFECT ON DATE OF INVOLUTIONS FOR REQ.
1. FOR DFC (FEATURE) PURPOSES THIS STANDARD LAYS PRECEDENTS OVER PREVIOUS DFC'S REFERENCED HEREIN.

REVISED A PER CHANGES SHEET 1, 2, 3, 4, 5, 6, 7, 8, 9, 10, 11, 12, 13, 14, 15, 16, 17, 18, 19, 20, 21, 22, 23, 24, 25, 26, 27, 28, 29, 30, 31, 32, 33, 34, 35, 36, 37, 38, 39, 40, 41, 42, 43, 44, 45, 46, 47, 48, 49, 50, 51, 52, 53, 54, 55, 56, 57, 58, 59, 60, 61, 62, 63, 64, 65, 66, 67, 68, 69, 70, 71, 72, 73, 74, 75, 76, 77, 78, 79, 80, 81, 82, 83, 84, 85, 86, 87, 88, 89, 90, 91, 92, 93, 94, 95, 96, 97, 98, 99, 100, 101, 102, 103, 104, 105, 106, 107, 108, 109, 110, 111, 112, 113, 114, 115, 116, 117, 118, 119, 120, 121, 122, 123, 124, 125, 126, 127, 128, 129, 130, 131, 132, 133, 134, 135, 136, 137, 138, 139, 140, 141, 142, 143, 144, 145, 146, 147, 148, 149, 150, 151, 152, 153, 154, 155, 156, 157, 158, 159, 160, 161, 162, 163, 164, 165, 166, 167, 168, 169, 170, 171, 172, 173, 174, 175, 176, 177, 178, 179, 180, 181, 182, 183, 184, 185, 186, 187, 188, 189, 190, 191, 192, 193, 194, 195, 196, 197, 198, 199, 200, 201, 202, 203, 204, 205, 206, 207, 208, 209, 210, 211, 212, 213, 214, 215, 216, 217, 218, 219, 220, 221, 222, 223, 224, 225, 226, 227, 228, 229, 230, 231, 232, 233, 234, 235, 236, 237, 238, 239, 240, 241, 242, 243, 244, 245, 246, 247, 248, 249, 250, 251, 252, 253, 254, 255, 256, 257, 258, 259, 260, 261, 262, 263, 264, 265, 266, 267, 268, 269, 270, 271, 272, 273, 274, 275, 276, 277, 278, 279, 280, 281, 282, 283, 284, 285, 286, 287, 288, 289, 290, 291, 292, 293, 294, 295, 296, 297, 298, 299, 300, 301, 302, 303, 304, 305, 306, 307, 308, 309, 310, 311, 312, 313, 314, 315, 316, 317, 318, 319, 320, 321, 322, 323, 324, 325, 326, 327, 328, 329, 330, 331, 332, 333, 334, 335, 336, 337, 338, 339, 340, 341, 342, 343, 344, 345, 346, 347, 348, 349, 350, 351, 352, 353, 354, 355, 356, 357, 358, 359, 360, 361, 362, 363, 364, 365, 366, 367, 368, 369, 370, 371, 372, 373, 374, 375, 376, 377, 378, 379, 380, 381, 382, 383, 384, 385, 386, 387, 388, 389, 390, 391, 392, 393, 394, 395, 396, 397, 398, 399, 400, 401, 402, 403, 404, 405, 406, 407, 408, 409, 410, 411, 412, 413, 414, 415, 416, 417, 418, 419, 420, 421, 422, 423, 424, 425, 426, 427, 428, 429, 430, 431, 432, 433, 434, 435, 436, 437, 438, 439, 440, 441, 442, 443, 444, 445, 446, 447, 448, 449, 450, 451, 452, 453, 454, 455, 456, 457, 458, 459, 460, 461, 462, 463, 464, 465, 466, 467, 468, 469, 470, 471, 472, 473, 474, 475, 476, 477, 478, 479, 480, 481, 482, 483, 484, 485, 486, 487, 488, 489, 490, 491, 492, 493, 494, 495, 496, 497, 498, 499, 500, 501, 502, 503, 504, 505, 506, 507, 508, 509, 510, 511, 512, 513, 514, 515, 516, 517, 518, 519, 520, 521, 522, 523, 524, 525, 526, 527, 528, 529, 530, 531, 532, 533, 534, 535, 536, 537, 538, 539, 540, 541, 542, 543, 544, 545, 546, 547, 548, 549, 550, 551, 552, 553, 554, 555, 556, 557, 558, 559, 560, 561, 562, 563, 564, 565, 566, 567, 568, 569, 570, 571, 572, 573, 574, 575, 576, 577, 578, 579, 580, 581, 582, 583, 584, 585, 586, 587, 588, 589, 590, 591, 592, 593, 594, 595, 596, 597, 598, 599, 600, 601, 602, 603, 604, 605, 606, 607, 608, 609, 610, 611, 612, 613, 614, 615, 616, 617, 618, 619, 620, 621, 622, 623, 624, 625, 626, 627, 628, 629, 630, 631, 632, 633, 634, 635, 636, 637, 638, 639, 640, 641, 642, 643, 644, 645, 646, 647, 648, 649, 650, 651, 652, 653, 654, 655, 656, 657, 658, 659, 660, 661, 662, 663, 664, 665, 666, 667, 668, 669, 670, 671, 672, 673, 674, 675, 676, 677, 678, 679, 680, 681, 682, 683, 684, 685, 686, 687, 688, 689, 690, 691, 692, 693, 694, 695, 696, 697, 698, 699, 700, 701, 702, 703, 704, 705, 706, 707, 708, 709, 710, 711, 712, 713, 714, 715, 716, 717, 718, 719, 720, 721, 722, 723, 724, 725, 726, 727, 728, 729, 730, 731, 732, 733, 734, 735, 736, 737, 738, 739, 740, 741, 742, 743, 744, 745, 746, 747, 748, 749, 750, 751, 752, 753, 754, 755, 756, 757, 758, 759, 760, 761, 762, 763, 764, 765, 766, 767, 768, 769, 770, 771, 772, 773, 774, 775, 776, 777, 778, 779, 780, 781, 782, 783, 784, 785, 786, 787, 788, 789, 790, 791, 792, 793, 794, 795, 796, 797, 798, 799, 800, 801, 802, 803, 804, 805, 806, 807, 808, 809, 810, 811, 812, 813, 814, 815, 816, 817, 818, 819, 820, 821, 822, 823, 824, 825, 826, 827, 828, 829, 830, 831, 832, 833, 834, 835, 836, 837, 838, 839, 840, 841, 842, 843, 844, 845, 846, 847, 848, 849, 850, 851, 852, 853, 854, 855, 856, 857, 858, 859, 860, 861, 862, 863, 864, 865, 866, 867, 868, 869, 870, 871, 872, 873, 874, 875, 876, 877, 878, 879, 880, 881, 882, 883, 884, 885, 886, 887, 888, 889, 890, 891, 892, 893, 894, 895, 896, 897, 898, 899, 900, 901, 902, 903, 904, 905, 906, 907, 908, 909, 910, 911, 912, 913, 914, 915, 916, 917, 918, 919, 920, 921, 922, 923, 924, 925, 926, 927, 928, 929, 930, 931, 932, 933, 934, 935, 936, 937, 938, 939, 940, 941, 942, 943, 944, 945, 946, 947, 948, 949, 950, 951, 952, 953, 954, 955, 956, 957, 958, 959, 960, 961, 962, 963, 964, 965, 966, 967, 968, 969, 970, 971, 972, 973, 974, 975, 976, 977, 978, 979, 980, 981, 982, 983, 984, 985, 986, 987, 988, 989, 990, 991, 992, 993, 994, 995, 996, 997, 998, 999, 1000.

APPROVED 2 71

A. NAVY-IP	TITLE	MILITARY STANDARD
Other Code	CONTAINERS, REUSABLE, ALUMINUM HAND PORTABLE - ASSEMBLY FOR SHIPPING	MS18011(WP)
PROCUREMENT SPECIFICATION	SUPERSEDES	SHEET

NOTE:—When Government drawings, specifications, or other data are used for any purpose other than in connection with a specific contract, the United States Government thereby incurs no responsibility nor any obligation whatsoever, and the fact that the Government may have furnished or in any way supplied the said drawings, specifications, or other data is not to be regarded by implication or otherwise as in any manner endorsing or approving any product or person or corporation or conveying any rights or permission to manufacture use or sell any patented invention that may in any way be related thereto.



NOTES

1. DECALCOMANIA (MS18017-1) TO BE CENTRALLY LOCATED, AS SHOWN
2. RETURN LABELS (MS18025-1) SHALL BE IN STRIP FORM. INSERT INTO ENVELOPE (MS18022-1), FOLD END FLAP AND PLACE IN BOX (MS18023-26)
3. DESICCANT SHALL BE IN ACCORDANCE WITH SPECIFICATION MIL-D-3464, AND SHALL BE PLACED IN CONTAINER AT TIME OF PACKAGING COMPONENT QUANTITY AND METHOD OF SECURING SHALL BE IN ACCORDANCE WITH SPECIFICATION MIL-P-116
4. BEFORE INSERTING COMPONENT IN BOX, REMOVE ENVELOPE CONTAINING LABELS. PLACE COMPONENT IN BOX, WITH TESTSTRIP, BLOCKING AND BRACING IN ACCORDANCE WITH CONTRACT PACKAGING PLAN SUPPLEMENT. SEAL BOX WITH ONE STRIP OF TAPE, SPECIFICATION PPP-T-76, OVER CENTER SEAM ONLY. TAPE SHALL EXTEND OVER ENDS OF BOX 1/2 INCH MINIMUM
5. PLACE ENVELOPE (WITH LABELS) FLAP DOWN ON TOP OF SEALED BOX. SECURE WITH TAPE SPECIFICATION PPP-T-60, TYPE III, CLASS 1, ALONG CENTER SEAM ONLY
6. MARKING SHALL BE IN ACCORDANCE WITH STANDARD MIL-STD-129, AND SHALL BE CONTAINED TO SHIPPING TAG (MS18024-1) ON 10" TAPE ON CONTAINER
7. SEALS (MS18018-1) TO BE LOCATED ON DIAGONALLY OPPOSITE CORNER LATCHES, AS SHOWN
8. CONTENTS LABEL (MS18021-1) SHALL BE PLACED ON TOP SURFACE OF CONTAINER, AS SHOWN
9. SHIPPING TAG SHALL BE LOCATED AS SHOWN. ATTACH BY THREADING WIRE THRU HOLES PROVIDED FOR SEALS
10. IF OVERPACKED TO SHIP MORE THAN ONE CONTAINER AT A TIME, THE SHIPPING DATA WILL BE PLACED ON THE OUTSIDE OF THE OVERPACK SHIPPING CONTAINER AND NO TAG IS REQUIRED.
11. APPROXIMATE CUBAGE = 2.87 CUBIC FEET.
12. DIMENSIONS IN INCHES.
13. REFERENCED DOCUMENTS SHALL BE OF THE ISSUE IN EFFECT ON DATE OF INVITATIONS FOR BID.

FOR DESIGN FEATUR PURPOSES (THIS STANDARD) IS PREPARED BY THE MILITARY STANDARDIZATION BOARD

P A NAVY-AT Other Cost	TITLE	MILITARY STANDARD
PROCUREMENT SPECIFICATION	CONTAINERS, REUSABLE, ALUMINUM HAND PORTABLE - ASSEMBLY FOR SHIPMENTS	MS18011(WP)
NO. 2	SUPERSEDES DOWNSIDE ENG NO. 2210520	C. 1

DD FORM 672-1 (Limited Editions)

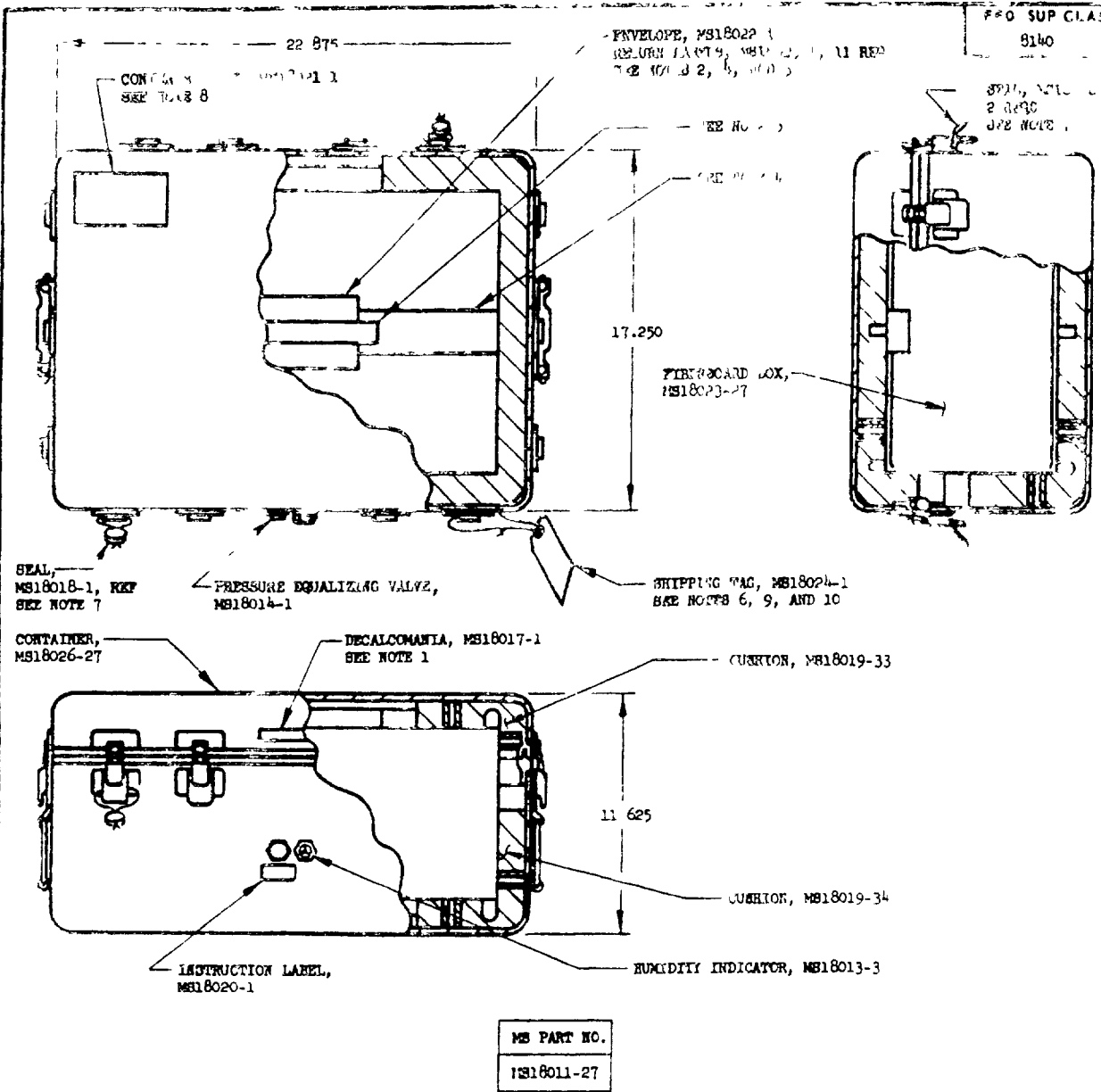
PHOTOGRAPHIC COPY OF THIS DOCUMENT IS NOT AUTHORIZED

REVISED 1964 (AFS 51 571 5701) APPROVED

When you are approved by the Bureau of Naval Weapons, you must use this Navy drawing for use by other military activities are required to employ this standard when suitable

operation the United States Government hereby incurs no responsibility nor any obligation whatsoever and the fact that the Government may have furnished information or in any way supplied the said drawings, specifications or other data is not to be regarded as an implication or otherwise in any manner licensing the holder in any way without person or corporation or conveying any rights or permission to manufacture use or sell any patented invention that may in any way be related thereto

net to be used in any activity are required to meet the standards where suitable

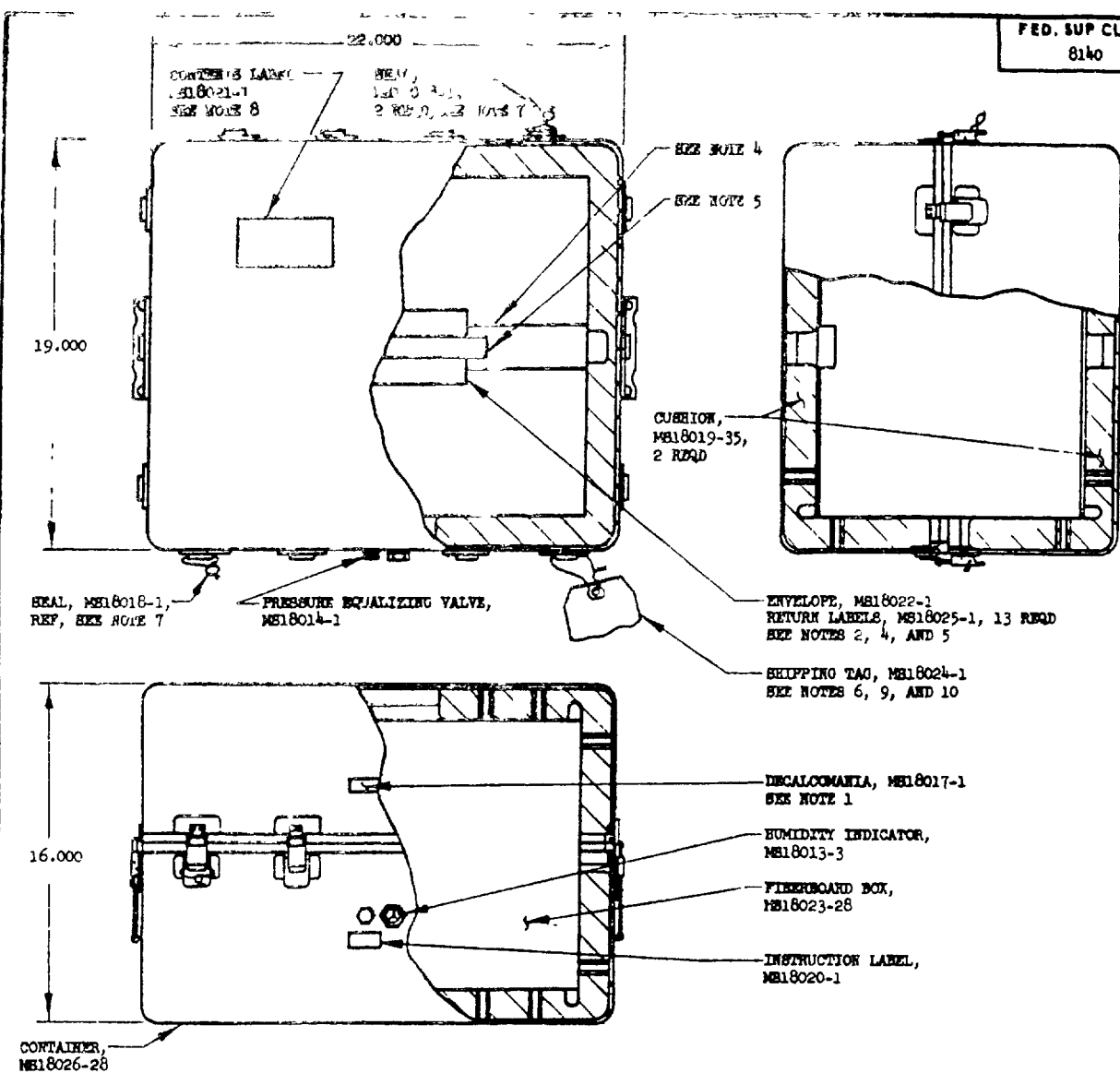


- NOTES
1. DECALCOMANIA (MS18017-1) TO BE CENTRALLY LOCATED, AS SHOWN.
 2. RETURN LABELS (MS18025-1) SHALL BE IN STRIP FORM. INSERT INTO ENVELOPE (MS18022-1), FOLD END FLAP AND PLACE IN BOX (MS18023-27)
 3. DESICCANT SHALL BE IN ACCORDANCE WITH SPECIFICATION MIL-D-3464, AND SHALL BE PLACED IN CONTAINER AT TIME OF PACKAGING COMPONENT. QUANTITY AND METHOD OF SECURING SHALL BE IN ACCORDANCE WITH SPECIFICATION MIL-F-110.
 4. BEFORE INSERTING COMPONENT IN BOX, REMOVE ENVELOPE CONTAINING LABELS. PLACE COMPONENT IN BOX, WITH NECESSARY BLOCKING AND BRACING IN ACCORDANCE WITH CONTRACT PACKAGING PLAN SUPPLEMENT. SEAL BOX WITH ONE STRIP OF TAPE, SPECIFICATION PPP-T-76, OVER CENTER SEAM ONLY. TAPE SHALL EXTEND OVER ENDS OF BOX 1/2 INCH MINIMUM.
 5. PLACE ENVELOPE (WITH LABELS) FLAP DOWN ON TOP OF SEALED BOX. SECURE WITH TAPE SPECIFICATION PPP-T-60, TYPE III, CLASS 2, ALONG CENTER SEAM ONLY.
 6. MARKING SHALL BE IN ACCORDANCE WITH STANDARD MIL-STD-129, AND SHALL BE CONFINED TO SHIPPING TAG (MS18024-1) DO NOT MARK ON CONTAINER.
 7. SEALS (MS18018-1) TO BE LOCATED ON DIAGONALLY OPPOSITE CORNER LATCHES, AS SHOWN.
 8. CONTENTS LABEL (MS18021-1) SHALL BE PLACED ON TOP SURFACE OF CONTAINER, AS SHOWN.
 9. SHIPPING TAG SHALL BE LOCATED AS SHOWN. ATTACH BY THREADING WIRE THRU HOLES PROVIDED FOR SEALS.
 10. IF OVERPACKED TO SHIP MORE THAN ONE CONTAINER AT A TIME, THE SHIPPING DATA WILL BE PLACED ON THE OUTSIDE OF THE OVERPACK SHIPPING CONTAINER AND NO TAG IS REQUIRED.
 11. APPROXIMATE VOLUME = 2.91 CUBIC FEET
 12. DIMENSIONS IN INCHES
 13. REFERENCED DOCUMENTS SHALL BE OF THE ISSUE IN EFFECT ON DATE OF INVITATIONS FOR BID.
- P R DESIGN FEATURE PURPOSES THIS STANDARD AXES PROVIDED WITH PR LATEST D. IF THIS IS REVERSED HERE

REVISED A P R CHANGES SHEET 1 2 3 4 5 6 7 8 9 10 11 12 13 14 15 16 17 18 19 20 21 22 23 24 25 26 27 28 29 30 31 32 33 34 35 36 37 38 39 40 41 42 43 44 45 46 47 48 49 50 51 52 53 54 55 56 57 58 59 60 61 62 63 64 65 66 67 68 69 70 71 72 73 74 75 76 77 78 79 80 81 82 83 84 85 86 87 88 89 90 91 92 93 94 95 96 97 98 99 100

P.A. NAVY 7P	TITLE	MILITARY STANDARD
Other	CONTAINERS, REUSABLE, ALUMINUM HAND-OPTABLE - ASSEMBLY FOR SHIPPING	MS18011(WP)
PROCUREMENT SPECIFICATION	SUPERSEDES	SHEET 2 OF
None	BUYERS ENG NO. 2210521	

NOTICE: When Government drawings, specifications or other data are used for any purpose other than in connection with a definite Government contract, the fact that the Government may have furnished such data in any way supplied the said drawings, specifications or other data is not to be regarded by implication or otherwise as in any manner licensing the holder or any other person or corporation or conveying any rights or permission to manufacture, use or sell any patented invention that may in any way be related thereto.



MS PART NO.
MBI8011-28

NOTES

1. DECALCOMANIA (MBI8017-1) TO BE CENTRALLY LOCATED, AS SHOWN.
2. RETURN LABELS (MBI8025-1) SHALL BE IN STRIP FORM INSERT INTO ENVELOPE (MBI8022-1), FOLD END FLAP AND PLACE IN BOX (MBI8023-28).
3. DESTOICANT SHALL BE IN ACCORDANCE WITH SPECIFICATION MIL-D-3464, AND SHALL BE PLACED IN CONTAINER AT TIME OF PACKAGING COMPONENT QUANTITY AND METHOD OF SECURING SHALL BE IN ACCORDANCE WITH SPECIFICATION MIL-F-116.
4. BEFORE INSERTING COMPONENT IN BOX, REMOVE ENVELOPE CONTAINING LABELS. PLACE COMPONENT IN BOX, WITH NECESSARY BLOCKING AND BRACING IN ACCORDANCE WITH CONTRACT PACKAGING PLAN SUPPLEMENT. SEAL BOX WITH ONE STRIP OF TAPE, SPECIFICATION PPP-T-76, OVER CENTER SEAM ONLY. TAPE SHALL EXTEND OVER ENDS OF BOX 1/2 INCH MINIMUM.
5. PLACE ENVELOPE (WITH LABELS) FLAP DOWN ON TOP OF SEALED BOX. SECURE WITH TAPE SPECIFICATION PPP-T-60, TYPE III, CLASS 2, ALONG CENTER SEAM ONLY.
6. MARKING SHALL BE IN ACCORDANCE WITH STANDARD MIL-STD-129, AND SHALL BE CONFINED TO SHIPPING TAG (MBI8024-1) TO NOT MARK ON CONTAINER.
7. SEALS (MBI8018-1) TO BE LOCATED ON DIAGONALLY OPPOSITE CORNER LATCHES, AS SHOWN.
8. CONTENTS LABEL (MBI8021-1) SHALL BE PLACED ON TOP SURFACE OF CONTAINER, AS SHOWN.
9. SHIPPING TAG SHALL BE LOCATED AS SHOWN. ATTACH BY THREADING WIRE THRU HOLES PROVIDED FOR SEALS.
10. IF OVERPACKED TO SHIP MORE THAN ONE CONTAINER AT A TIME, THE SHIPPING DATA WILL BE PLACED ON THE OUTSIDE OF THE OVERPACK SHIPPING CONTAINER AND NO TAG IS REQUIRED.
11. APPROXIMATE CUBAGE = 4.23 CUBIC FEET.
12. DIMENSIONS IN INCHES.
13. REFERENCED DOCUMENTS SHALL BE OF THE ISSUE IN EFFECT ON DATE OF INVITATIONS FOR BTO.

FOR DESIGN FEATURE PURPOSES THIS STANDARD TAKES PRECEDENCE OVER PREVIOUS EDITIONS OF THIS STANDARD

P.A. NAVY-MI	TITLE	MILITARY STANDARD
Other Cust	CONTAINERS, REUSABLE, ALUMINUM HAND PORTABLE - ASSEMBLY FOR SHIPPING	MS18011(WP)
PROCUREMENT SPECIFICATION None.	SUPPLIES BUREAU ENG NO. 2210522	SHEET 28 OF

DD FORM 672-1 (Limited copy) (11/11/12)

PREVIOUS EDITIONS OF THIS STANDARD ARE OBSOLETE

This standard has been approved by the Bureau of Naval Weapons, Department of the Navy and is mandatory for use by all activities. All other military activities are required to employ this standard where available.

APPROVED 21 Jan 53 REVISED 19 MAY 61 SEE SHEET 27 OF 15