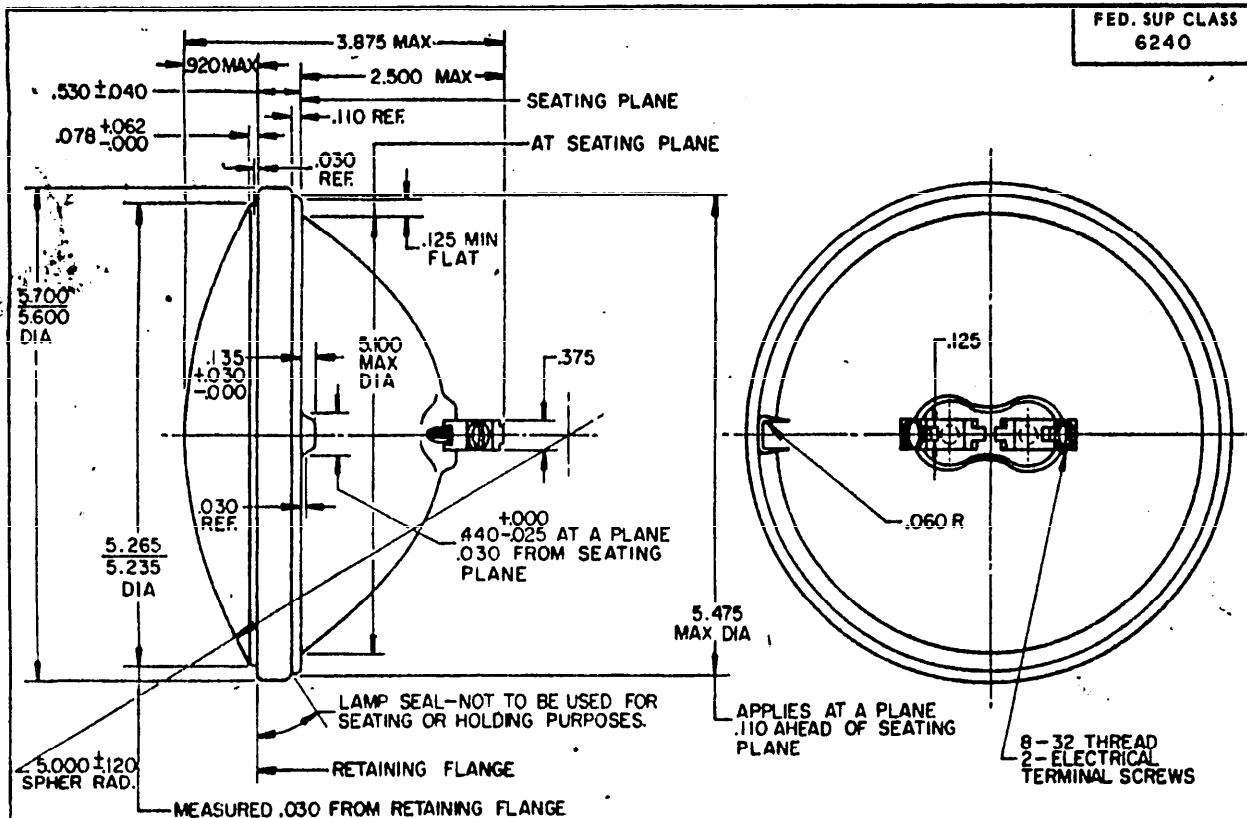


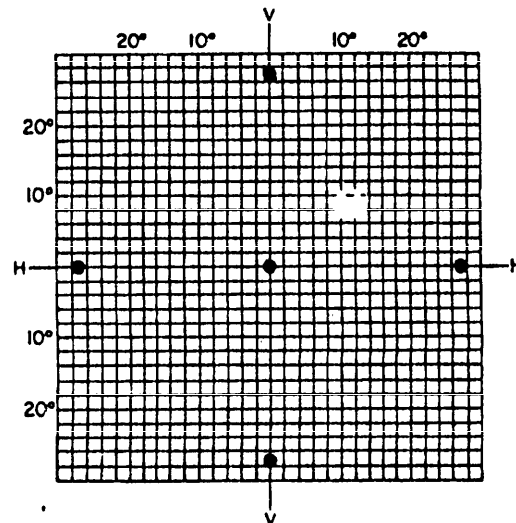
NOTICE.—When Government drawings, specifications, or other data are used for any purpose other than in connection with a definitely related Government procurement operation, the United States Government thereby incurs no responsibility, nor any obligation whatsoever; and the fact that the Government may have formulated, furnished, or in any way supplied the said drawings, specifications, or other data is not to be regarded by implication or otherwise as in any manner licensing the holder or any other person or corporation, or conveying any right or permission to manufacture, use, or sell any patented invention that may in any way be related thereto.



PHOTOMETRIC TEST POINT VALUES MEASURED 60 FEET FROM LAMP.

APPROXIMATE MAXIMUM INITIAL CANDLEPOWER—4500

APPROXIMATE BEAM PATTERN SPREAD TO 10% OF MAX
CANDLEPOWER—55 DEGREES HORIZONTAL AXIS—55 DEGREES
VERTICAL AXIS



PHOTOMETRIC TEST POINTS

MS PART NO.	FORMER PART NO.	RATED		DESIGN		FILAMENT TYPE	RATED AVG. LAB LIFE	DESCRIPTION
		VOLTS	WATTS	VOLTS	AMPS			
MS 18006-4572	ORD 573141	24	150	28	5.36	CC-6	300 HRS	CLEAR GLASS LENS, PRISMATIC

NOTES: 1. TYPE IV (MILITARY VEHICLE) OF PROCUREMENT SPECIFICATION.

2. THE PHOTOMETRY CONSISTS OF MEASURING (1) THE MAXIMUM CANDLEPOWER AND (2) APPROXIMATE BEAM PATTERN SPREAD TO TEN PER CENT OF MAXIMUM CANDLEPOWER.

3. MS DASH NUMBER CORRELATES WITH LAMP INDUSTRY TRADE NUMBER

4. UNLESS OTHERWISE SPECIFIED, DIMENSIONS ARE IN INCHES, TOLERANCE, ±.010 ON DECIMALS.

5. MARKING SHALL CONSIST OF THE MS DASH NUMBER, VOLTAGE RATING, AND MANUFACTURER'S IDENTIFICATION IN ACCORDANCE WITH MIL-STD-130.

6. THIS STANDARD IS NOT INTENDED TO LIMIT CONSTRUCTION TO FEATURES OTHER THAN AS SHOWN HEREON BY DIMENSIONS, NOTATIONS, AND REFERENCED DOCUMENTS.

7. FOR DESIGN FEATURE PURPOSES THIS STANDARD TAKES PRECEDENCE OVER PROCUREMENT DOCUMENTS REFERENCED HEREIN.

P.A. MO	TITLE	MILITARY STANDARD
Other Cust	LAMP, INCANDESCENT—SEALED BEAM, PAR 46	MS 18006
Navy—Ships	FLOOD LAMP, 2 SCREW TERMINAL TYPE	
AF—ASD		
PROCUREMENT SPECIFICATION	SUPERSEDES:	SHEET 1 OF 1
W-L-50	DLAX 3.1 (IN PART)	