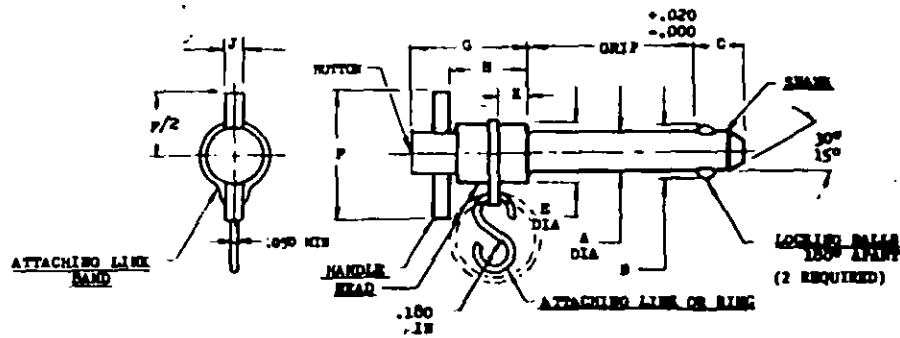


PROJECT NO. 5340-0916

FED. SUP. CLASS  
5340USER SYMBOLS:  
ARMY - CLREVIEWER SYMBOLS:  
NAVY - AS  
USAF - B2  
ARMY - AV, WC  
DGA - IS

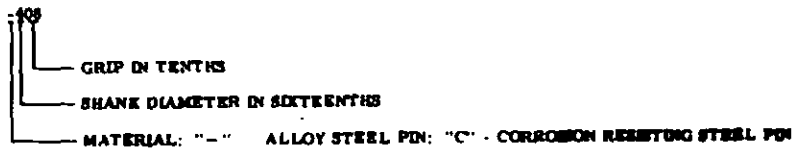
THIS ILLUSTRATION OF THE HANDLE IS FOR IDENTIFICATION PURPOSES ONLY AND IS NOT INTENDED TO RESTRICT DESIGNS AND SHAPES WHICH WILL OTHERWISE CONFORM TO SPECIFICATION REQUIREMENTS AND ARE WITHIN THE ENVELOPE DIMENSIONS.



NO. DIA.	A		B +.005	C MAX	E		F		G MAX	H MIN	J MIN	K		DOUBLE SHANK	
	MAX	MIN			MAX	MIN	MAX	MIN				MAX	MIN	STEEL	CHINA
1/16	.1885	.1870	.220	.410	.450	.360	1.750	1.375	1.030	.780	.105	.480	.415	4,600	5,150
1/8	.2485	.2470	.289	.410	.450	.360	1.750	1.375	1.030	.780	.105	.480	.415	8,200	9,200
5/16	.3110	.3095	.375	.440	.505	.390	1.750	1.375	1.030	.780	.105	.480	.415	12,800	14,400
1/2	.3735	.3720	.440	.510	.630	.510	2.000	1.675	1.090	.830	.134	.540	.445	18,400	20,600
7/16	.4360	.4345	.509	.510	.630	.510	2.000	1.675	1.090	.830	.134	.540	.445	25,000	28,000
1/2	.4985	.4970	.594	.590	.755	.640	2.250	2.125	1.270	.880	.200	.540	.445	32,000	36,000
9/16	.5610	.5595	.666	.660	.755	.640	2.250	2.125	1.270	.880	.200	.540	.445	41,200	46,000
5/8	.6235	.6220	.750	.750	.870	.805	2.500	2.375	1.465	1.000	.231	.575	.510	51,200	57,500
3/4	.7485	.7470	.887	.790	.960	.890	2.500	2.375	1.465	1.000	.231	.595	.530	73,600	82,500
7/8	.8735	.8720	1.046	.950	1.150	1.070	2.875	2.750	1.640	1.180	.231	.730	.665	100,000	112,500
1	.9985	.9970	1.219	1.100	1.280	1.200	2.875	2.750	1.640	1.180	.231	.865	.800	131,000	147,000

PART NUMBER CONSISTS OF THE MS NUMBER AND THE DASH NUMBERS.

EXAMPLE: MS17988



ENVELOPE DIMENSIONS AND STRENGTH LEVELS OF THIS STANDARD ARE THE SUBJECT OF INTERNATIONAL STANDARDIZATION AGREEMENT ASAC AIR STD. 17/54. WHEN REVISION OR CANCELLATION OF THIS STANDARD IS PROPOSED WHICH WILL EFFECT OR VIOLATE THE INTERNATIONAL AGREEMENT CONCERNED, THE ACTIVITY WILL TAKE APPROPRIATE RECONCILIATION ACTION THROUGH INTERNATIONAL STANDARDIZATION CHANNELS, INCLUDING DEPARTMENTAL STANDARDIZATION OFFICES, IF REQUIRED.

FOR NOTES SEE SHEET 2

FOR DESIGN FEATURE PURPOSES, THIS STANDARD TAKES PRECEDENCE OVER PROCUREMENT DOCUMENTS REFERENCED HEREIN. REFERENCED DOCUMENTS SHALL BE OF THE ISSUE IN EFFECT ON DATE OF INVITATIONS FOR BID.

© ENTIRE STANDARD REVISED AND REDRAWN

P.A. NAVY - AS OTHER CUST. ARMY - AV USAF - 11	INTER- NATIONAL INTEREST B	TITLE PIN, QUICK RELEASE, POSITIVE LOCKING, DOUBLE ACTING, "T" HANDLE	MILITARY STANDARD MS17988
PROCUREMENT SPECIFICATION MIL-P-23460	SUPERSEDES		SHEET 1 OF 4

DD FORM 672-1 (Continued)

Prepared by the Office of the Secretary of Defense

NAVY NO. 10000

\*Revisions/changes to this document are indicated by the date of this document. For further confirmation of changes to this document, refer to the revision table located at the end of the information in the current document.

This drawing is intended to be used by all Departments of the Department of Defense. It is not to be used for any other purpose. It is not to be used for any other purpose. It is not to be used for any other purpose.

APPROVED 1 NOV 1942 REVISED 22 JUNE 1965 10 AUG 1972

USER SYMBOLS:  
ARMY - GLREVIEWER SYMBOLS:  
NAVY - AG  
USAF - 82  
ARMY - AV, WC  
DSA - IS

\*Section/spec information is current as of the date of this document.  
For future coordination of changes to this document, draft submission  
should be based on the information in the current section.

This military standard is approved for use by all Departments  
& Agencies of the Department of Defense. Selection for all new  
engineering and design applications and for replacement and shall  
be made from this document.

FED. SUP CLASS  
5340

## NOTES:

## MATERIAL:

ALLOY STEEL PINS:

SHANK AND SPINDLE: ALLOY STEEL 4130 PER MIL-T-6736 AND MIL-S-6756  
BALLS: CORROSION RESISTING STEEL CL 440C PER QQ-S-763  
HEAD: CARBON STEEL PER QQ-S-637 OR ALLOY STEEL 4130 PER MIL-S-6756  
BUTTON: CARBON STEEL PER QQ-S-637 OR ALLOY STEEL 4130 PER MIL-S-6756 OR  
ALUMINUM ALLOY 2017-T4 PER QQ-A-225/5 OR 2024-T4 PER QQ-A-225/6  
HANDLE: CARBON STEEL PER QQ-S-637 OR CORROSION RESISTING STEEL COMP. 302  
SPRING: MUSIC WIRE PER QQ-W-470  
ATTACHING LINK: CARBON STEEL WIRE PFR QQ-W-428 OR CRES COMP. 302 PER  
QQ-W-423  
ATTACHING LINK BAND: CARBON STEEL PER QQ-S-698 OR CORROSION RESISTING  
STEEL CL 302

CORROSION RESISTING STEEL PINS:

SHANK AND SPINDLE: CORROSION RESISTING STEEL 17-4PH PER AMS 5643 OR  
PH15-7Mo PER AMS 5657 OR EQUIVALENT.  
BALLS: CORROSION RESISTING STEEL CL 440C PER QQ-S-763  
HEAD AND HANDLE: CORROSION RESISTING STEEL TY 303 PER QQ-S-764, OR CL 302  
PER QQ-S-763  
BUTTON: CORROSION RESISTING STEEL TY 303 PER QQ-S-764 OR CL 302 PER QQ-S-763  
OR ALUMINUM ALLOY 2017-T4 PER QQ-A-225/5 OR PER 2024-T4 QQ-A-225/6  
SPRING: CORROSION RESISTING STEEL 17-7PH SPRING TEMPER, PER AMS 5673 OR  
COMP. 302, CONDITION B PER QQ-W-423  
ATTACHING LINK BAND: CORROSION RESISTING STEEL CL 302 PER QQ-S-766  
ATTACHING LINK: CORROSION RESISTING STEEL COMP. 302 PER QQ-W-423 OR 17-7PH  
PER AMS 5673

## HEAT TREATMENT:

ALLOY STEEL PINS: SHANK AND SPINDLE, PER MIL-H-6875 TO ROCKWELL C36 TO C40

CORROSION RESISTING STEEL PINS: SHANK AND SPINDLE, PER MIL-H-6875 TO ROCKWELL C40  
MINIMUM

## PLATING OR COATING:

ALLOY STEEL AND CARBON STEEL PARTS, CADMIUM PLATED PER QQ-P-416, TYPE II, CLASS 2;  
(CLASS 3 ACCEPTABLE UNTIL 1 JAN 74) CRES PARTS, PASSIVATED PER QQ-P-35; ALUMINUM  
ALLOY PARTS, ANODIZED PER MIL-A-8625 TYPE I OR II, CLASS 1 OR CHEMICAL FILM PER  
MIL-C-5541 CLASS 1A.

DIMENSIONS ARE IN INCHES.

APPROVED 1 NOV 1962 REVISED (C) FOR CHANGES SEE SHEETS 1 THRU 6

P.A. NAVY - AS OTHER CUST ARMY - AV USAF - 11	INTER- NATIONAL INTEREST #	TITLE  PIN, QUICK RELEASE, POSITIVE LOCKING, DOUBLE ACTING, "T" HANDLE	MILITARY STANDARD  <b>MS17988</b>
PROCUREMENT SPECIFICATION MIL-P-33480		SUPERSEDES	SHEET 2

DD FORM 672-1 (Continued)

PREVIOUS EDITIONS OF THIS FORM ARE OBSOLETE

PLATE NO. 15320



USER SYMBOLS:  
ARMY - CL

REVISED SYMBOLS:  
NAVY - AS  
USAF - R2  
ARMY - 15 V, WC

"Description information is current as of the date of this document.  
For future consideration of changes in this document, draft circulation  
should be given to the organization of the current document."

This military standard is approved for use by all Departments  
of the Department of Defense. Selection for all the  
organizing and design organizations and for replacing and their  
be made from this document.

DASH NUMBERS													FED. SUP CLASS 5340	
Grip LENGTH	NOMINAL DIAMETER													
	3/16		1/4		5/16		3/8		7/16		1/2			
	ALLOY STEEL	COR. RES. STEEL	ALLOY STEEL	COR. RES. STEEL	ALLOY STEEL	COR. RES. STEEL	ALLOY STEEL	COR. RES. STEEL	ALLOY STEEL	COR. RES. STEEL	ALLOY STEEL	COR. RES. STEEL		
6.100	-361	C361	-461	C461	-561	C561	-661	C661	-761	C761	-861	C861		
6.200	-362	C362	-462	C462	-562	C562	-662	C662	-762	C762	-862	C862		
6.300	-363	C363	-463	C463	-563	C563	-663	C663	-763	C763	-863	C863		
6.400	-364	C364	-464	C464	-564	C564	-664	C664	-764	C764	-864	C864		
6.500	-365	C365	-465	C465	-565	C565	-665	C665	-765	C765	-865	C865		
6.600	-366	C366	-466	C466	-566	C566	-666	C666	-766	C766	-866	C866		
6.700	-367	C367	-467	C467	-567	C567	-667	C667	-767	C767	-867	C867		
6.800	-368	C368	-468	C468	-568	C568	-668	C668	-768	C768	-868	C868		
6.900	-369	C369	-469	C469	-569	C569	-669	C669	-769	C769	-869	C869		
7.000	-370	C370	-470	C470	-570	C570	-670	C670	-770	C770	-870	C870		
7.100	-371	C371	-471	C471	-571	C571	-671	C671	-771	C771	-871	C871		
7.200	-372	C372	-472	C472	-572	C572	-672	C672	-772	C772	-872	C872		
7.300	-373	C373	-473	C473	-573	C573	-673	C673	-773	C773	-873	C873		
7.400	-374	C374	-474	C474	-574	C574	-674	C674	-774	C774	-874	C874		
7.500	-375	C375	-475	C475	-575	C575	-675	C675	-775	C775	-875	C875		
7.600	-376	C376	-476	C476	-576	C576	-676	C676	-776	C776	-876	C876		
7.700	-377	C377	-477	C477	-577	C577	-677	C677	-777	C777	-877	C877		
7.800	-378	C378	-478	C478	-578	C578	-678	C678	-778	C778	-878	C878		
7.900	-379	C379	-479	C479	-579	C579	-679	C679	-779	C779	-879	C879		
8.000	-380	C380	-480	C480	-580	C580	-680	C680	-780	C780	-880	C880		
8.100	-381	C381	-481	C481	-581	C581	-681	C681	-781	C781	-881	C881		
8.200	-382	C382	-482	C482	-582	C582	-682	C682	-782	C782	-882	C882		
8.300	-383	C383	-483	C483	-583	C583	-683	C683	-783	C783	-883	C883		
8.400	-384	C384	-484	C484	-584	C584	-684	C684	-784	C784	-884	C884		
8.500	-385	C385	-485	C485	-585	C585	-685	C685	-785	C785	-885	C885		
8.600	-386	C386	-486	C486	-586	C586	-686	C686	-786	C786	-886	C886		
8.700	-387	C387	-487	C487	-587	C587	-687	C687	-787	C787	-887	C887		
8.800	-388	C388	-488	C488	-588	C588	-688	C688	-788	C788	-888	C888		
8.900	-389	C389	-489	C489	-589	C589	-689	C689	-789	C789	-889	C889		
9.000	-390	C390	-490	C490	-590	C590	-690	C690	-790	C790	-890	C890		
9.100	-391	C391	-491	C491	-591	C591	-691	C691	-791	C791	-891	C891		
9.200	-392	C392	-492	C492	-592	C592	-692	C692	-792	C792	-892	C892		
9.300	-393	C393	-493	C493	-593	C593	-693	C693	-793	C793	-893	C893		
9.400	-394	C394	-494	C494	-594	C594	-694	C694	-794	C794	-894	C894		
9.500	-395	C395	-495	C495	-595	C595	-695	C695	-795	C795	-895	C895		
9.600	-396	C396	-496	C496	-596	C596	-696	C696	-796	C796	-896	C896		
9.700	-397	C397	-497	C497	-597	C597	-697	C697	-797	C797	-897	C897		
9.800	-398	C398	-498	C498	-598	C598	-698	C698	-798	C798	-898	C898		
9.900	-399	C399	-499	C499	-599	C599	-699	C699	-799	C799	-899	C899		
P.A. M.T. - AS Other Com ARMY - AV USAF - 11		INTER- NATIONAL INTEREST #	TITLE PIN, QUICK RELEASE, POSITIVE LOCKING, DOUBLE ACTING, "T" HANDLE					MILITARY STANDARD MS17988						
PROCUREMENT SPECIFICATION REL-P-33467		SUPERSEDES		SHEET 4										

APPROVED 1 MAY 1964 REVISED (C) FOR CHANGES SEE SHEETS 1 THRU 6

USE 314823-  
ARMY - 02

REVISION SYMBOL  
NAVY - AS  
USAF - 02  
ARMY - AV, WC  
DGA - 38

\*Revision/inter information is current as of the date of this document.  
For future coordination of changes to this document, staff circulation  
should be based on the information in the current design.

This military standard is intended for use by all Departments  
& Agencies of the Department of Defense. Selection for all use  
engineering and design applications and for routine use shall  
be made from this document.

DASH NUMBERS										
NOMINAL DIAMETER										
GROUP LENGTH	9/16		5/8		3/4		7/8		1"	
	ALLOY STEEL	COR. WCS, STEEL	ALLOY STEEL	COR. WCS, STEEL	ALLOY STEEL	COR. WCS, STEEL	ALLOY STEEL	COR. WCS, STEEL	ALLOY STEEL	COR. WCS, STEEL
1,700	-907	0907								
1,800	-908	0908								
1,900	-909	0909	-1009	0209	-1209	0209	-1410	0210	-1610	0210
1,000	-910	0910	-1010	0210	-1210	0210	-1410	0210	-1610	0210
1,100	-911	0911	-1011	0211	-1211	0211	-1411	0211	-1611	0211
1,200	-912	0912	-1012	0212	-1212	0212	-1412	0212	-1612	0212
1,300	-913	0913	-1013	0213	-1213	0213	-1413	0213	-1613	0213
1,400	-914	0914	-1014	0214	-1214	0214	-1414	0214	-1614	0214
1,500	-915	0915	-1015	0215	-1215	0215	-1415	0215	-1615	0215
1,600	-916	0916	-1016	0216	-1216	0216	-1416	0216	-1616	0216
1,700	-917	0917	-1017	0217	-1217	0217	-1417	0217	-1617	0217
1,800	-918	0918	-1018	0218	-1218	0218	-1418	0218	-1618	0218
1,900	-919	0919	-1019	0219	-1219	0219	-1419	0219	-1619	0219
2,000	-920	0920	-1020	0220	-1220	0220	-1420	0220	-1620	0220
2,100	-921	0921	-1021	0221	-1221	0221	-1421	0221	-1621	0221
2,200	-922	0922	-1022	0222	-1222	0222	-1422	0222	-1622	0222
2,300	-923	0923	-1023	0223	-1223	0223	-1423	0223	-1623	0223
2,400	-924	0924	-1024	0224	-1224	0224	-1424	0224	-1624	0224
2,500	-925	0925	-1025	0225	-1225	0225	-1425	0225	-1625	0225
2,600	-926	0926	-1026	0226	-1226	0226	-1426	0226	-1626	0226
2,700	-927	0927	-1027	0227	-1227	0227	-1427	0227	-1627	0227
2,800	-928	0928	-1028	0228	-1228	0228	-1428	0228	-1628	0228
2,900	-929	0929	-1029	0229	-1229	0229	-1429	0229	-1629	0229
3,000	-930	0930	-1030	0230	-1230	0230	-1430	0230	-1630	0230
3,100	-931	0931	-1031	0231	-1231	0231	-1431	0231	-1631	0231
3,200	-932	0932	-1032	0232	-1232	0232	-1432	0232	-1632	0232
3,300	-933	0933	-1033	0233	-1233	0233	-1433	0233	-1633	0233
3,400	-934	0934	-1034	0234	-1234	0234	-1434	0234	-1634	0234
3,500	-935	0935	-1035	0235	-1235	0235	-1435	0235	-1635	0235
3,600	-936	0936	-1036	0236	-1236	0236	-1436	0236	-1636	0236
3,700	-937	0937	-1037	0237	-1237	0237	-1437	0237	-1637	0237
3,800	-938	0938	-1038	0238	-1238	0238	-1438	0238	-1638	0238
3,900	-939	0939	-1039	0239	-1239	0239	-1439	0239	-1639	0239
4,000	-940	0940	-1040	0240	-1240	0240	-1440	0240	-1640	0240
4,100	-941	0941	-1041	0241	-1241	0241	-1441	0241	-1641	0241
4,200	-942	0942	-1042	0242	-1242	0242	-1442	0242	-1642	0242
4,300	-943	0943	-1043	0243	-1243	0243	-1443	0243	-1643	0243
4,400	-944	0944	-1044	0244	-1244	0244	-1444	0244	-1644	0244
4,500	-945	0945	-1045	0245	-1245	0245	-1445	0245	-1645	0245
4,600	-946	0946	-1046	0246	-1246	0246	-1446	0246	-1646	0246
4,700	-947	0947	-1047	0247	-1247	0247	-1447	0247	-1647	0247
4,800	-948	0948	-1048	0248	-1248	0248	-1448	0248	-1648	0248
4,900	-949	0949	-1049	0249	-1249	0249	-1449	0249	-1649	0249
5,000	-950	0950	-1050	0250	-1250	0250	-1450	0250	-1650	0250
5,100	-951	0951	-1051	0251	-1251	0251	-1451	0251	-1651	0251
5,200	-952	0952	-1052	0252	-1252	0252	-1452	0252	-1652	0252
5,300	-953	0953	-1053	0253	-1253	0253	-1453	0253	-1653	0253
5,400	-954	0954	-1054	0254	-1254	0254	-1454	0254	-1654	0254
5,500	-955	0955	-1055	0255	-1255	0255	-1455	0255	-1655	0255
5,600	-956	0956	-1056	0256	-1256	0256	-1456	0256	-1656	0256
5,700	-957	0957	-1057	0257	-1257	0257	-1457	0257	-1657	0257
5,800	-958	0958	-1058	0258	-1258	0258	-1458	0258	-1658	0258
5,900	-959	0959	-1059	0259	-1259	0259	-1459	0259	-1659	0259
6,000	-960	0960	-1060	0260	-1260	0260	-1460	0260	-1660	0260

DD FORM 672-1 (Continued)

PREVIOUS EDITIONS OF THIS FORM ARE OBSOLETE

PLATE 00, 15120

APPROVED 1 NOV. 1952 REVISED C FOR CHANGE SEE SHEETS 1, 2, 3, 4, 5, 6

MILITARY STANDARD

MS17988

P.A. NAVY, AF  
Other Cost  
ARMY - AV  
USAF - 11

INTER-  
NATIONAL  
INTEREST  
\*

TITLE  
FOR, QUICK RELEASE,  
POSITIVE LOCKING, DOUBLE ACTING,  
"T" HANDLE

PROCUREMENT SPECIFICATION  
MIL-P-23460

SUPPLEMENT

SHEET  
5

This military award is approved for use by all Departments and Agencies of the Government of Defense Selection for all are

FED. SUP CLASS  
5340

DASH STUDGERS

NOMINAL DIAMETER

GUT LENGTH	NOMINAL DIAMETER											
	9/16		5/8		3/4		7/8		1"			
	ALLOY STEEL	COR. RHS. STEEL	ALLOY STEEL	COR. RHS. STEEL	ALLOY STEEL	COR. RHS. STEEL	ALLOY STEEL	COR. RHS. STEEL	ALLOY STEEL	COR. RHS. STEEL	ALLOY STEEL	COR. RHS. STEEL
6.100	-961	C1961	-1061	C1061	-1261	C1261	-1461	C1461	-1661	C1661		
6.200	-962	C1962	-1062	C1062	-1262	C1262	-1462	C1462	-1662	C1662		
6.300	-963	C1963	-1063	C1063	-1263	C1263	-1463	C1463	-1663	C1663		
6.400	-964	C1964	-1064	C1064	-1264	C1264	-1464	C1464	-1664	C1664		
6.500	-965	C1965	-1065	C1065	-1265	C1265	-1465	C1465	-1665	C1665		
6.600	-966	C1966	-1066	C1066	-1266	C1266	-1466	C1466	-1666	C1666		
6.700	-967	C1967	-1067	C1067	-1267	C1267	-1467	C1467	-1667	C1667		
6.800	-968	C1968	-1068	C1068	-1268	C1268	-1468	C1468	-1668	C1668		
6.900	-969	C1969	-1069	C1069	-1269	C1269	-1469	C1469	-1669	C1669		
7.000	-970	C1970	-1070	C1070	-1270	C1270	-1470	C1470	-1670	C1670		
7.100	-971	C1971	-1071	C1071	-1271	C1271	-1471	C1471	-1671	C1671		
7.200	-972	C1972	-1072	C1072	-1272	C1272	-1472	C1472	-1672	C1672		
7.300	-973	C1973	-1073	C1073	-1273	C1273	-1473	C1473	-1673	C1673		
7.400	-974	C1974	-1074	C1074	-1274	C1274	-1474	C1474	-1674	C1674		
7.500	-975	C1975	-1075	C1075	-1275	C1275	-1475	C1475	-1675	C1675		
7.600	-976	C1976	-1076	C1076	-1276	C1276	-1476	C1476	-1676	C1676		
7.700	-977	C1977	-1077	C1077	-1277	C1277	-1477	C1477	-1677	C1677		
7.800	-978	C1978	-1078	C1078	-1278	C1278	-1478	C1478	-1678	C1678		
7.900	-979	C1979	-1079	C1079	-1279	C1279	-1479	C1479	-1679	C1679		
8.000	-980	C1980	-1080	C1080	-1280	C1280	-1480	C1480	-1680	C1680		
8.100	-981	C1981	-1081	C1081	-1281	C1281	-1481	C1481	-1681	C1681		
8.200	-982	C1982	-1082	C1082	-1282	C1282	-1482	C1482	-1682	C1682		
8.300	-983	C1983	-1083	C1083	-1283	C1283	-1483	C1483	-1683	C1683		
8.400	-984	C1984	-1084	C1084	-1284	C1284	-1484	C1484	-1684	C1684		
8.500	-985	C1985	-1085	C1085	-1285	C1285	-1485	C1485	-1685	C1685		
8.600	-986	C1986	-1086	C1086	-1286	C1286	-1486	C1486	-1686	C1686		
8.700	-987	C1987	-1087	C1087	-1287	C1287	-1487	C1487	-1687	C1687		
8.800	-988	C1988	-1088	C1088	-1288	C1288	-1488	C1488	-1688	C1688		
8.900	-989	C1989	-1089	C1089	-1289	C1289	-1489	C1489	-1689	C1689		
9.000	-990	C1990	-1090	C1090	-1290	C1290	-1490	C1490	-1690	C1690		
9.100	-991	C1991	-1091	C1091	-1291	C1291	-1491	C1491	-1691	C1691		
9.200	-992	C1992	-1092	C1092	-1292	C1292	-1492	C1492	-1692	C1692		
9.300	-993	C1993	-1093	C1093	-1293	C1293	-1493	C1493	-1693	C1693		
9.400	-994	C1994	-1094	C1094	-1294	C1294	-1494	C1494	-1694	C1694		
9.500	-995	C1995	-1095	C1095	-1295	C1295	-1495	C1495	-1695	C1695		
9.600	-996	C1996	-1096	C1096	-1296	C1296	-1496	C1496	-1696	C1696		
9.700	-997	C1997	-1097	C1097	-1297	C1297	-1497	C1497	-1697	C1697		
9.800	-998	C1998	-1098	C1098	-1298	C1298	-1498	C1498	-1698	C1698		
9.900	-999	C1999	-1099	C1099	-1299	C1299	-1499	C1499	-1699	C1699		

APPROVED 1 MAY 1964  
REVISED (C) FOR CHAIRS SEE SHEET 1, FIGURE 6

P.A. REV. - AS Other Case AND - AV REF. - 11	INTER- NATIONAL INTEREST II	TITLE FOR QUICK RELEASE, POSITIVE LOCKING, BUCKLE ACTION, "Y" HANDLE	MILITARY STANDARD MS 17988
--	--------------------------------------	---	-------------------------------

