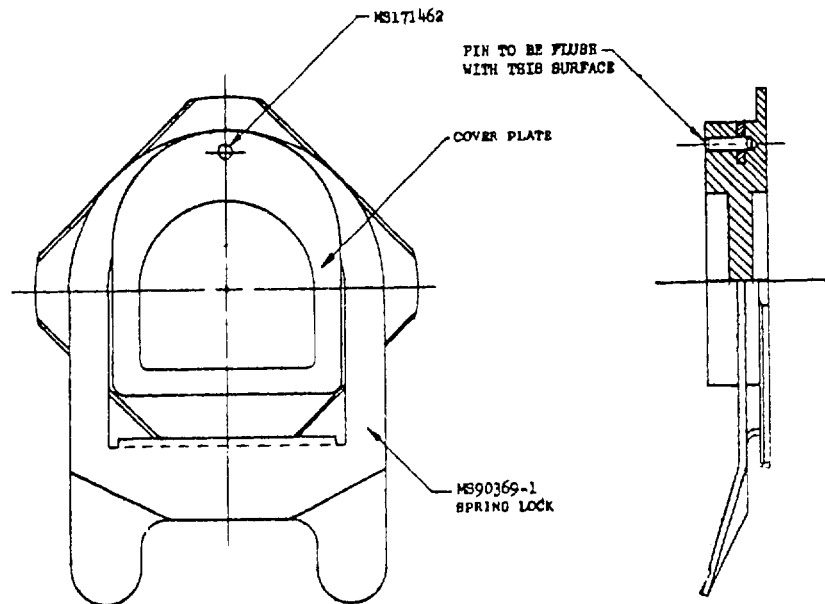


Note: This draft, dated February 1965 prepared by WP, has not been approved and is subject to modification. DO NOT USE PRIOR TO APPROVAL.

FED. SUP CLASS
8475



DASH NO.

-1

NOTES:

1. MATERIAL: COVER PLATE, ALUMINUM ALLOY CASTING, CLASS B, IN ACCORDANCE WITH QQ-A-596.
SPRING LOCK, CORROSION RESISTANT STEEL, CLASS 301, CONDITION FULL HARD, IN ACCORDANCE WITH QQ-B-766.
2. FINISH: COVER PLATE, ANODIZE, TYPE II, IN ACCORDANCE WITH MIL-A-8625. DYED GRAY
SPRING LOCK, PASSIVATE IN ACCORDANCE WITH MIL-STD-171.
3. REMOVE ALL BURR AND BREAK ALL SHARP EDGES.
4. DIMENSIONS IN INCHES. UNLESS OTHERWISE SPECIFIED, TOLERANCES: DECIMALS ± 0.010 , ANGLES $\pm 1^\circ$.
5. USAGE: INTENDED FOR USE TO SEAL OFF INLET PORTS WHEN THE VENTILATION AND/OR ANTI-C SUIT APERTURE IN THE PRESSURE SUIT OR ANTI-C SUIT IS NOT BEING USED.

FOR DESIGN FEATURE PURPOSES, THIS STANDARD TAKES PRECEDENCE OVER PROCUREMENT DOCUMENTS REFERENCED HEREIN.
REFERENCED DOCUMENTS SHALL BE OF THE ISSUE IN EFFECT ON DATE OF INVITATIONS FOR BID.

(A) ENTIRE STANDARD REVISED

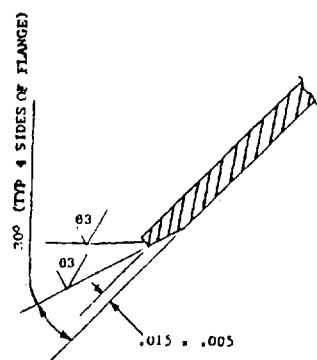
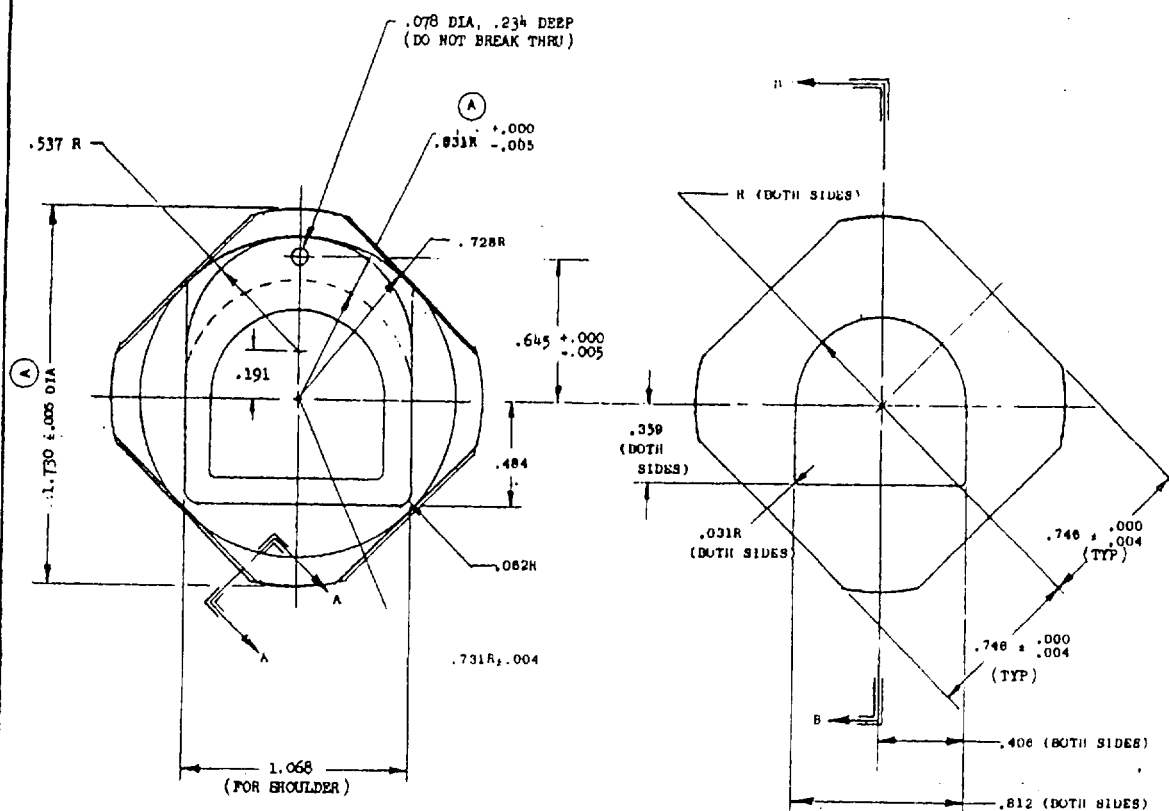
This standard has been approved by the BUREAU OF NAVAL WEAPONS
Department of the NAVY, and is mandatory for use by
or activity. All other military activities are required
to comply with this standard where suitable.

P.A. NAVY-WP Other Cust	TITLE COVER PLATE ASSEMBLY	MILITARY STANDARD MS17970(WP)
PROCUREMENT SPECIFICATION	SUPERSEDES	SHEET OF

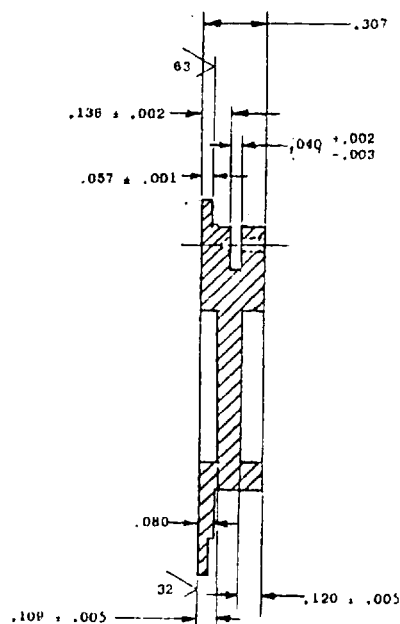
APPROVED 2 DECEMBER 63 REVISED (A) 27 April 1965

V-058

FED. SUP CLASS
8475



SECTION A-A



SECTION B-B

APPROVED 2 DECEMBER 63 REVISED A FOR CHANGES, SEE SHEETS 1 AND 2.

This standard has been approved by the BUREAU OF NAVAL WEAPONS Department of the NAVY and is mandatory for use by that activity. All other military activities are required to employ this standard where suitable.

P.A. NAVY-WP	TITLE	MILITARY STANDARD
Other Cust	COVER PLATE ASSEMBLY	MS17970 (WP)
PROCUREMENT SPECIFICATION NONE	SUPERSEDES:	SHEET 2

DD FORM 672-1 (Limited coordination)
1 SEP 57

PREVIOUS EDITIONS OF THIS FORM ARE OBSOLETE

W-058