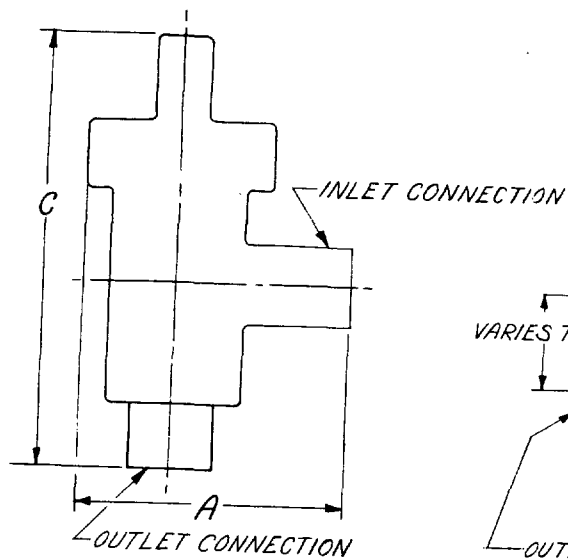
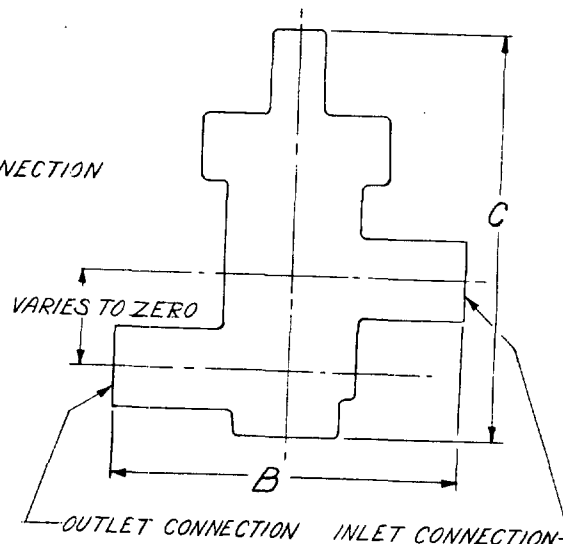


(B)



STYLE-1 (ANGLE)



STYLE-2 (STRAIGHT-THROUGH)

DASH NO.	STYLE	MIN CAPACITIES (BTU/HR)		INLET AND OUTLET CONNECTIONS (INCHES)	MAXIMUM DIMENSIONS (INCHES)		
		EVAPORATOR TEMPERATURE			A	B	C
		-10F	+20F				
		1 PSI MAX PRESSURE DROP	2 PSI MAX PRESSURE DROP				
-7A	1	6,000	12,000	7/8	6 1/2	-	9 1/2
-7S	2	6,000	12,000	7/8	-	9	9 1/2
-8A	1	9,000	18,000	7/8	7	-	12
-8S	2	9,000	18,000	7/8	-	9 1/2	12
-9A	1	12,000	24,000	1 1/8	7	-	12
-9S	2	12,000	24,000	1 1/8	-	9 1/2	12

NOTES

- FOR USE WITH DICHLORODIFLUOROMETHANE (CCl_2F_2) R-12 REFRIGERANT.
- ALL CONNECTIONS SHALL BE FEMALE SOLDER TYPE CONFORMING TO MS 35925.
- CAPACITIES BASED ON MAXIMUM PRESSURE DIFFERENTIAL OF 15 POUNDS BETWEEN VALVE SETTING AND NORMAL OPERATING SUCTION PRESSURE AND 100 F. VAPOR FREE ENTERING LIQUID TEMPERATURE.
- DELETED.
- REFERENCED DOCUMENTS SHALL BE OF THE ISSUE IN EFFECT ON DATE OF INVITATION FOR BID OR REQUEST FOR PROPOSAL.
- FOR DESIGN FEATURE PURPOSES, THIS STANDARD TAKES PRECEDENCE OVER PROCUREMENT DOCUMENTS REFERENCED HEREIN.
- PART NUMBER: THE MS PART NUMBER CONSISTS OF THE MS NUMBER PLUS THE DASH NUMBER. EXAMPLE: MS 17846-7A-NUMERAL INDICATES SIZE-LETTER INDICATES STYLE, I.E., "A" EQUALS ANGLE VALVE, "S" EQUALS STRAIGHT-THROUGH VALVE.

APPROVED 21 MAY 1962 REVISED (A) 9 APRIL 1965 (B) 16 MAY 1975

P.A. ARMY-GL
Other Cust NAVY-YD
USAF-82

PROCUREMENT SPECIFICATION
MIL-V-23300

TITLE VALVES, REGULATING, FLUID
PRESSURE, CRANKCASE,
REFRIGERANT-12

SUPERSEDES:

MILITARY STANDARD

MS 17846

SHEET / OF /

DD FORM 672-1 (Coordinated)

PREVIOUS EDITIONS OF THIS FORM ARE OBSOLETE.

REVIEW ACTIVITIES
Army - MD
DSA - CS
USER ACTIVITY
Army - CE
Navy - MC

This military standard is approved for use by all Departments and Agencies of the Department of Defense. Selection for all new engineering and design applications and for repetitive use shall be made from this document.