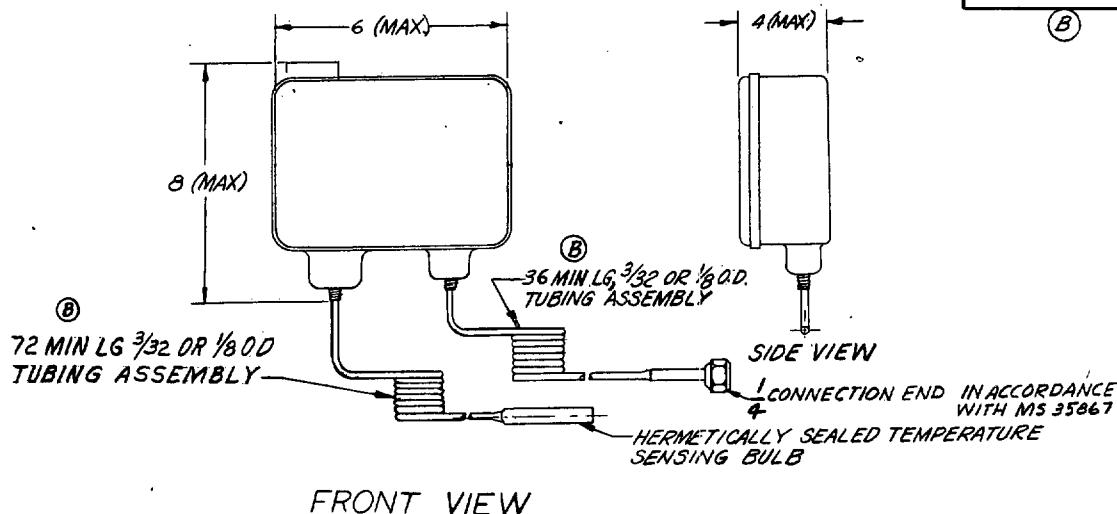


FED. SUP CLASS  
5930

DASH NUMBER	ELECTRICAL CHARACTERISTICS	TEMPERATURE CONTROL		HIGH PRESSURE SAFETY CUT-OUT		
		RANGE MIN. CUT-OUT TO MAX. CUT-IN	DIFFERENTIAL	RANGE $\pm 25$ PSIG	CUT-IN DIFFERENTIAL	TYPE OF RESET
- 1.	120/240V, 50 TO 60 HERTZ	-10F TO 55F	5F TO 20F	100 TO 425 PSIG	30 TO 55 PSI	AUTO-MATIC
- 2.	24V, D.C.	-10F TO 55F	TOP OF RANGE		BELOW CUT-OUT SETTING	MANUAL
- 3.	120/240V, 50 TO 60 HERTZ	50F TO 90F	5 F TO 30F		NONE	
- 4.	24V, D.C.	50F TO 90F	BOTTOM OF RANGE			

## NOTES

- FOR USE WITH DICHLORODIFLUOROMETHANE ( $\text{CCl}_2\text{F}_2$ ), R-12 REFRIGERANT
- SUITABLE FOR OUTDOOR USE, EXCEPT SHIPBOARD.
- SWITCHES ARE SINGLE POLE, SINGLE THROW. FOR TEMPERATURE CONTROL, CONTACTS OPEN AT LOW TEMPERATURES AND CLOSE AT HIGH TEMPERATURES. FOR HIGH PRESSURE SAFETY CUT-OUT, CONTACTS OPEN AT HIGH PRESSURES AND CLOSE AT LOW PRESSURES.
- CONTROLS HAVE GRADUATED SCALES FOR MAKING SETTINGS.
- DASH NOS. 1 AND 3 MAY BE USED FOR DIRECT CONTROL OF MOTORS WITH A MAXIMUM LOAD OF 13.0 AMPS AT 115 VOLTS AND 6.5 AMPS AT 230 VOLTS. FOR LOADS EXCEEDING THESE RATINGS, DASH NOS. 1 AND 3 ARE FOR PILOT DUTY. DASH NOS. 2 AND 4 ARE FOR PILOT DUTY ONLY.
- DIMENSIONS IN INCHES.
- FOR DESIGN FEATURE PURPOSES, THIS STANDARD TAKES PRECEDENCE OVER PROCUREMENT DOCUMENTS REFERENCES HEREIN.
- REFERENCED DOCUMENTS SHALL BE THE ISSUE IN EFFECT ON DATE OF INVITATION FOR BIDS OR REQUEST FOR PROPOSAL.
- PART NUMBERS: THE MS PART NUMBER CONSISTS OF THE MS NUMBER PLUS THE DASH NUMBER. EXAMPLE: MS 17844-1.

P.A. ARMY - 6L Other Cust NAVY - YD USAF - 82	TITLE CONTROL, TEMPERATURE, REFRIGERANT -12, — WITH HIGH PRESSURE CUT-OUT.	MILITARY STANDARD MS 17844
PROCUREMENT SPECIFICATION MIL-C-23292	SUPERSEDES:	SHEET / OF /

DD FORM 1 SEP 57 672-1 (Coordinated)

PREVIOUS EDITIONS OF THIS FORM ARE OBSOLETE.

APPROVED 16 MAY 1962 REVISED (A) 25 JULY 1968 (B) 16 MAY 1975

Review  
MD  
GSUser  
CE  
MC

This Military Standard is approved for use by all Departments and Agencies of the Department of Defense. Selection for all new engineering and design applications and for repetitive use shall be made from this document.