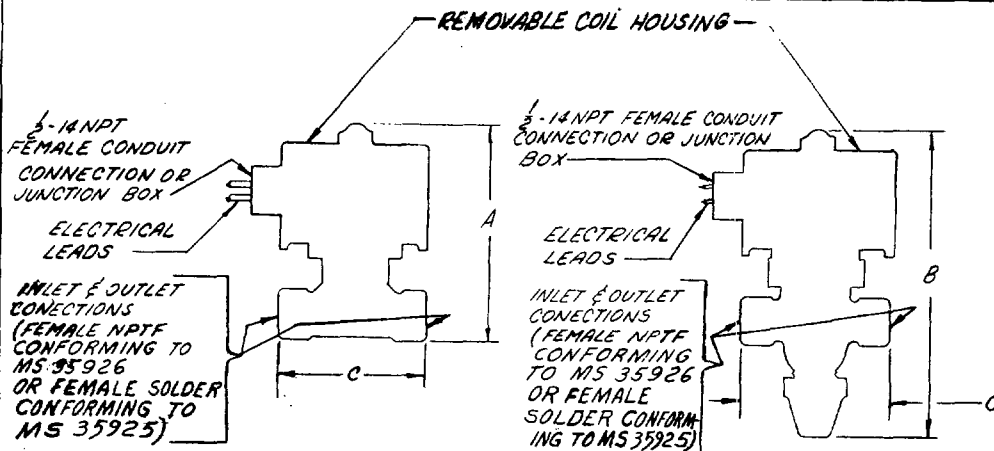


FED. SUP CLASS
4810STYLE 1 - WITHOUT
MANUAL OPENING STEMSTYLE 2 - WITH MANUAL
OPENING STEM

DASH NO.	TYPE	STYLE	MAX DIMENSIONS (IN.)			SIZE	CAP. RATING	ELEC. RATING	CONNECTION SIZE	
			A	B	C				PIPE	TUBING
-1	I	1 or 2	6-1/4	8-1/4	3-1/4	1	3 TR	120/50-60 Hz	3/8 IN.	1/2 IN.
-2	I	1 or 2	6-1/4	8-1/4	3-1/4	1	3 TP	208-240/50-60 Hz	3/8 IN.	1/2 IN.
-3	I	1 or 2	6-1/4	8-1/4	3-1/4	1	3 TR	12 V DC	3/8 IN.	1/2 IN.
-4	I	1 or 2	6-1/4	8-1/4	3-1/4	1	3 TR	24 V DC	3/8 IN.	1/2 IN.
-5	I	2	—	8-1/2	3-3/8	2	7.5 TR	120/50-60 Hz	1/2 IN.	5/8 IN.
-6	I	2	—	8-1/2	3-3/8	2	7.5 TR	208-240/50-60 Hz	1/2 IN.	5/8 IN.
-7	I	2	—	8-1/2	3-3/8	2	7.5 TP	12 V DC	1/2 IN.	5/8 IN.
-8	I	2	—	8-1/2	3-3/8	2	7.5 TR	24 V DC	1/2 IN.	5/8 IN.
-9	II	1 or 2	8	8-1/2	3-1/4	3	2.5 CFM	120/50-60 Hz	1/2 IN.	5/8 IN.
-10	II	1 or 2	8	8-1/2	3-1/4	3	2.5 CFM	208-240/50-60 Hz	1/2 IN.	5/8 IN.
-11	II	1 or 2	8	8-1/2	3-1/4	3	2.5 CFM	12 V DC	1/2 IN.	5/8 IN.
-12	II	1 or 2	8	8-1/2	3-1/4	3	2.5 CFM	24 V DC	1/2 IN.	5/8 IN.
-13	II	2	—	8-3/4	3-1/4	4	5.0 CFM	120/50-60 Hz	1/2 IN.	5/8 IN.
-14	II	2	—	8-3/4	3-1/4	4	5.0 CFM	208-240/50-60 Hz	1/2 IN.	5/8 IN.
-15	II	2	—	8-3/4	3-1/4	4	5.0 CFM	12 V DC	1/2 IN.	5/8 IN.
-16	II	2	—	8-3/4	3-1/4	4	5.0 CFM	24 V DC	1/2 IN.	5/8 IN.

MAXIMUM OPERATING PRESSURE DIFFERENTIALS (MOPD)

ELECTRIC CURRENT		PERCENT OF RATED VOLTAGE	MOPD (PSI)
AC		100	300
		85	300
DC		100	300
		80	300

RATING CONDITIONS FOR LIQUID REFRIGERANT BASED ON A FLOW OF 3.9 LBS./MIN./TON OF REFRIGERATION WITH A 2 P.S.I. PRESSURE DROP ACROSS THE VALVE, A CONDENSING TEMPERATURE OF 100 F., AND A SUCTION TEMPERATURE OF 40 F.

RATING CONDITIONS FOR REFRIGERANT GAS BASED ON A FLOW IN C.F.M. OF REFRIGERATION WITH A 5 P.S.I. PRESSURE DROP ACROSS THE VALVE, A CONDENSING TEMPERATURE OF 100 F., GAS WITH A 20 F. SUPERHEAT ENTERING THE VALVE, AN EVAPORATOR TEMPERATURE OF 40 F.

NOTES

1. VALVES SHALL BE NORMALLY CLOSED.
2. VALVES SHALL OPERATE WHEN INSTALLED UP TO 20 DEGREES OF VERTICAL.
3. COILS SHALL BE REPLACEABLE.
4. COIL HOUSING ROTATES 360 DEGREES.
5. FOR DESIGN FEATURE PURPOSES, THIS STANDARD TAKES PRECEDENCE OVER PROCUREMENT DOCUMENTS REFERENCED HEREIN.
6. REFERENCED DOCUMENTS SHALL BE OF THE ISSUE IN EFFECT ON DATE OF INVITATION FOR BID.
7. PART NUMBERS: THE MS PART NUMBER CONSISTS OF THE MS NUMBER PLUS THE DASH NUMBER.
EXAMPLE: MS 17841-1.

P.A. ARMY GL Other Cust	TITLE VALVES, SOLENOID, REFRIGERANT-12	MILITARY STANDARD
NAVY YD USAF 99	SUPERSEDES:	MS 17841
PROCUREMENT SPECIFICATION MIL-V-23289		SHEET / OF /

DD FORM 672-1 (Coordinated)

PREVIOUS EDITIONS OF THIS FORM ARE OBSOLETE.

REVIEW ACTIVITIES
Army - MD
Navy - SH
DSA - GS
USER ACTIVITIES
Army - MI, CE

This military standard has been approved for use by all Departments and the Department of Defense. Selection for all new engineering and design applications and for repetitive use shall be made from this document.

APPROVED 15 MAY 1962 REVISED (A) 30 AUG 1968 (B) 16 MAY 1975 (C) 18 NOV 76