

INCH-POUND

MS17833F  
3 December 2002  
SUPERSEDING  
MS17833E  
20 June 1991

## DETAIL SPECIFICATION SHEET

# CONNECTOR, PNEUMATIC STARTER DUCT, FLANGED, MALE

This specification sheet is approved for use by all Departments and Agencies of the Department of Defense. The requirements for acquiring the product described herein shall consist of this specification sheet and the design and test specified herein.

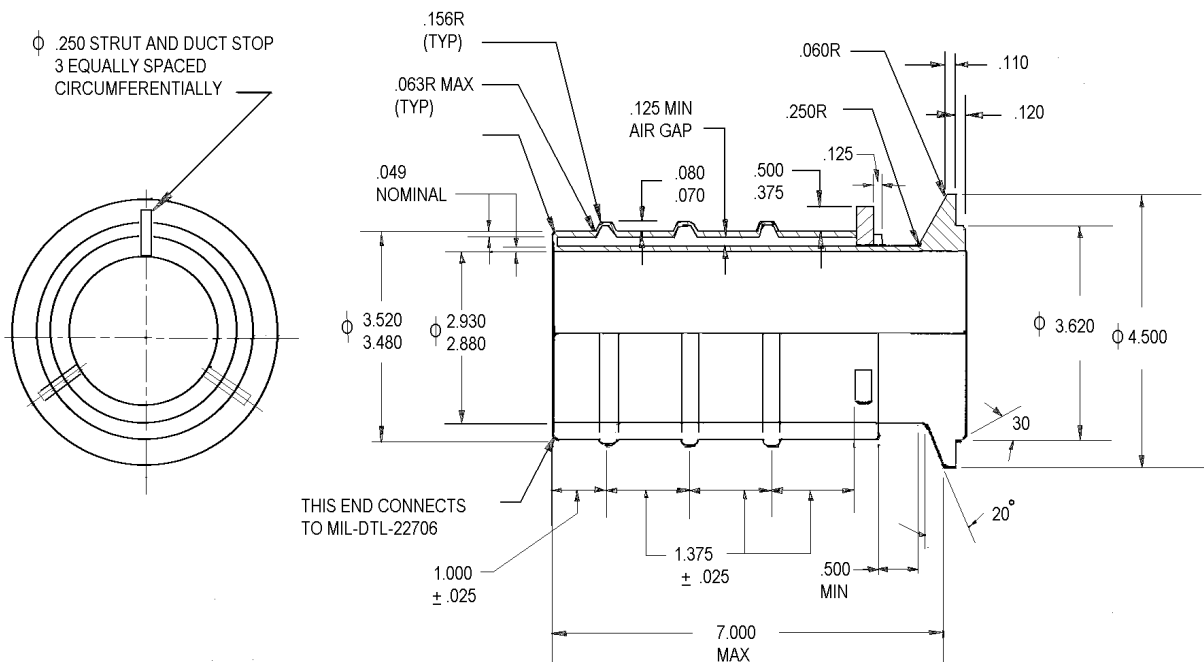


FIGURE 1. Flange detail dimensions.

## MS17833F

### Notes to figure 1.

1. Remove burrs and break sharp edges to .003 - .015 R.
2. Dimensions are in inches. Unless otherwise specified on the drawing, tolerances: decimals  $\pm .010$ , angles  $\pm 0.5^\circ$ .
3. Unless otherwise specified on the drawing, all machined fillets to be .020 R.
4. Connector flange mates with one end of MIL-DTL-25531 coupling.

### REQUIREMENTS:

Material: Corrosion Resistant Steel (18-8), AISI Type 321 in accordance with specifications SAE-AMS5510 or SAE-AMS5512. Passivate in accordance with SAE AMS-QQ-P-35 after machining.

Finish: All exposed surface roughness shall be 125 micro-inches  $R_a$  maximum in accordance with ASME-B46.1.

Porosity test: Finished connector shall not leak when subjected to 100 PSI air pressure and submerged in water for 3 minutes.

### Notes:

1. In the event of a conflict between the text of this specification sheet and the references cited herein, the text of this specification sheet shall take precedence.
2. Referenced documents shall be of the issue in effect on the date of invitation for bid.

Changes from previous issue. Marginal notations are not used in this revision to identify changes with respect to the previous issue on Form DD 672-1. In this revision, the previous MS standard was reformatted to military specification sheet in accordance with MIL-STD-961D.

## CONCLUDING MATERIAL

### Custodians:

Army - AV  
Navy - AS  
Air Force - 99

### Preparing activity:

Navy - AS  
  
(Project: 4730 - 2343)

### Review activities:

Army - AT  
Navy - MC, SA  
Air Force - 71  
DLA - CC