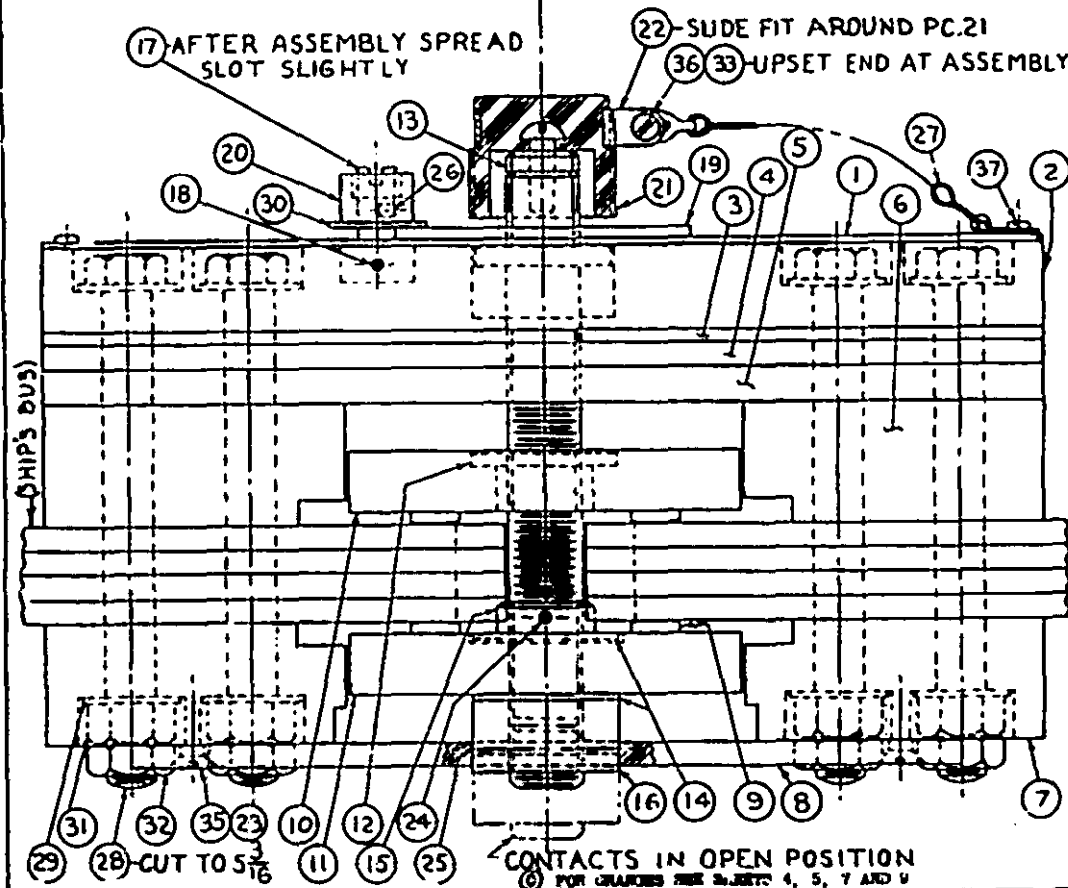
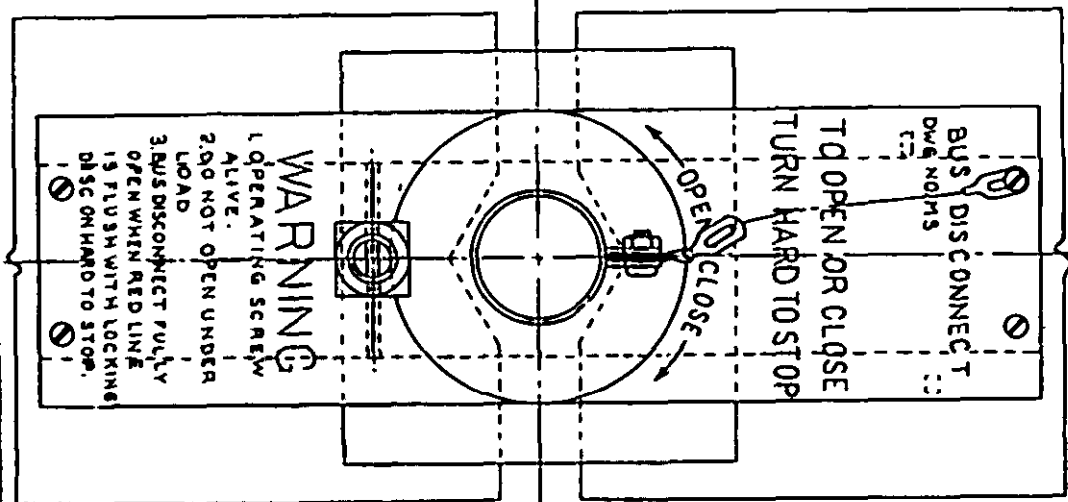


FED. SUP CLASS  
6150

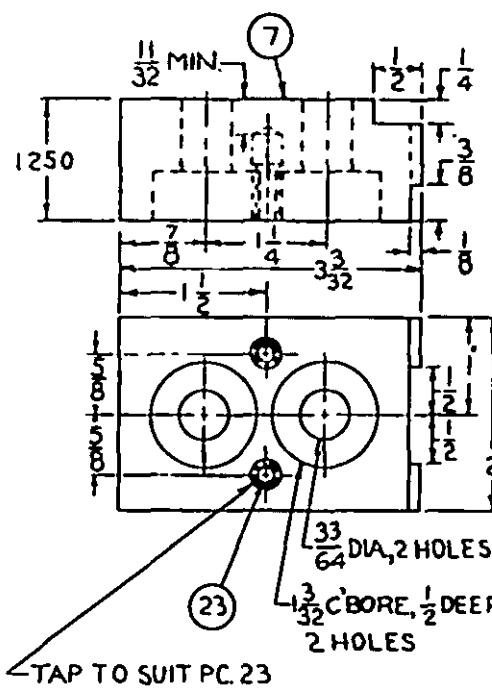
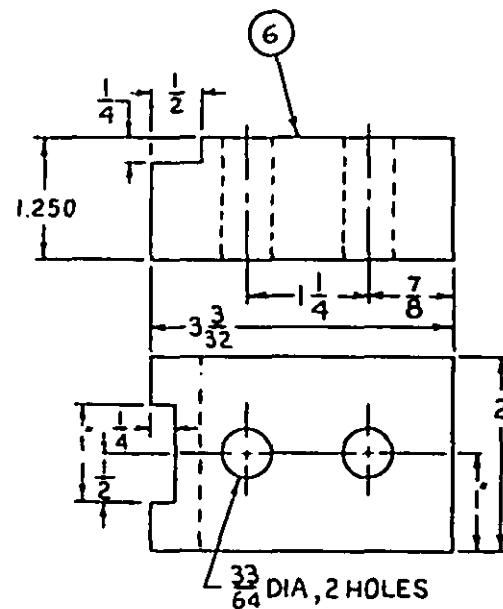
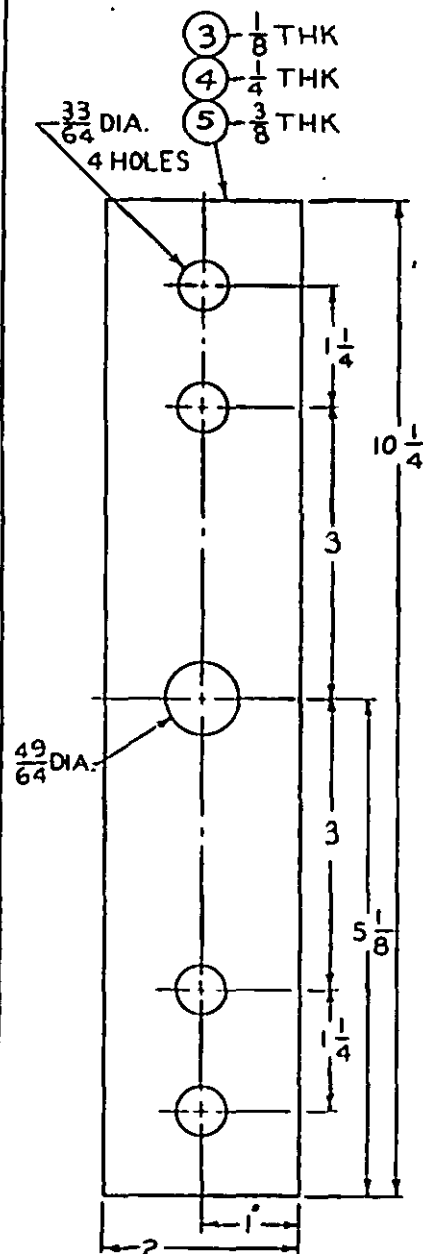
This military standard is approved by the Naval Ship Engineering Center Department of the Navy and is mandatory for use by that activity. All other military activities are required to employ this standard where applicable.

P.A. SMITH Other Com	TITLE <b>BUS DISCONNECT QUICK OPENING SYMBOL 1484</b>	MILITARY STANDARD <b>MS 17831 (SHIP'S)</b> SHEET 1 OF 9
PROCUREMENT SPECIFICATION NONE	SUPERSEDES	

APPROVED 21 May 1962 REVISED ④ 8 March 1963 ⑤ 2 August 1963 ⑥ 19 January 1968



FED. SUP CLASS  
6150



This military standard is approved by the Naval Ship Engineering Center Department of the Navy and is mandatory for use by that activity. All other military activities are required to employ this standard where suitable.

APPROVED 21 May 1963 REVISED (A) SEE PAGES 1 THROUGH 6 (B) SEE SHEET 4 (C) FOR CHANGES SEE SHEETS 4, 5, 7 AND 9

P.A. SHIPS Other Case	TITLE BUS DISCONNECT, QUICK OPENING SYMBOL 1484	MILITARY STANDARD MS 17831 (SHLIFB)
PROCUREMENT SPECIFICATION FORM	SUPersedes	SHEET 3

APPROVED 21 May 1962 REVISED (A) SEE PAGES 1 THROUGH 9 (R) SEE SHEET 4 (C) FOR CHANGES SEE SHEETS 4, 6, 7 AND 9

FED. SUP CLASS  
6150

## LIST OF MATERIAL - QUANTITIES FOR ONE UNIT

PC. NO.	NAME	QTY.	MATERIAL	SPECIFICATION	REQUIREMENTS
1	NAMEPLATE	1	LAMINATED PLASTIC		TYPE CMC
2	BLOCK, SUPPORT	1	LAMINATED PLASTIC		TYPE CMC
3	FILLER	1	LAMINATED PLASTIC		TYPE CMC
4	FILLER	1	LAMINATED PLASTIC		TYPE CMC
5	FILLER	1	LAMINATED PLASTIC		TYPE CMC
6	BLOCK, SPACER (FRONT)	2	LAMINATED PLASTIC		TYPE CMC
7	BLOCK, SPACER (BACK)	2	LAMINATED PLASTIC		TYPE CMC
8	PLATE, GUIDE	1	LAMINATED PLASTIC		TYPE CMC
9	CONTACT, INLAY	4	SILVER		999 FINENESS
10	BLOCK, CONTACT (FRONT)	1	COPPER	QQ-B-825	SEE REQ'T. 3 & 4
11	BLOCK, CONTACT (BACK)	1	COPPER	QQ-B-825	SEE REQ'T. 3 & 4
12	INSERT, CONTACT BLOCK	1	CRES.		CLASS 303
13	SCREW, OPERATING	1	CRES.		CLASS 303
14	WASHER, FLAT	2	CRES.		
15	COLLAR (INSIDE)	1	CRES.		
16	COLLAR (OUTSIDE)	1	CRES.		
17	STUD	1	CRES.		
18	PIN	1	CRES.		
19	DISC, LOCKING	1	LAMINATED PLASTIC		TYPE CMC
20	NUT, SQUARE	1	CRES.		
21	CAP, PROTECTIVE	1	PLASTIC	MTL-W-14	MT-20
22	CLAMP	1	CRES.		
23	INSERT, HELI-COIL	4		MS 122161	
24	RYRET, CYRIL, SEE REQ'T. 7	1	CRES.		
25	RYRET, CYRIL, SEE REQ'T. 7	1	CRES.		
26	PELLET, 1/8 DIA. X 5/32 LG.	1	NYLON		
27	CHAIN, PLUMBERS	6"	BRASS		
28	NUT, HEX. HD. 1/2-13 X 5 1/2 LG.	4	STEEL		CADMIUM PLATE
29	WASHER, FLAT, 1" O.D. X 9/16 I.D. X .062 THK.	8	STEEL		CADMIUM PLATE
30	WASHER, FLAT, 1" O.D. X 13/32 I.D. X .062 THK.	1	CRES.		
31	NUT, HEX. 1/2-13	4	STEEL		CADMIUM PLATE
32	NUT, JAM, 1/2-13	4	STEEL		CADMIUM PLATE
33	NUT, HEX #8-32	1	STEEL		CADMIUM PLATE
34	SCREW, HD. HD., 1/4-20 X 3/4 LG.	1	STEEL		CADMIUM PLATE
35	SCREW, FL. HD., 1/4-20 X 3/4 LG.	4	STEEL		CADMIUM PLATE
36	SCREW, PAN. HD. #8-32 X 3/8 LG.	1	STEEL		CADMIUM PLATE
37	SCREW, PAN. HD. #6-32 X 5/8 LG.	4	STEEL		CADMIUM PLATE

This military standard is approved by the Naval Ship Engineering Center Department of the Navy and is mandatory for use by that activity. All other military activities are required to employ this standard where suitable.

P.A. SHIPS  
Other CodeTITLE BUS DISCONNECT,  
QUICK OPENING  
SYMBOL 1484

MILITARY STANDARD

MS 17891(SHIP)

PROCUREMENT SPECIFICATION  
FORM

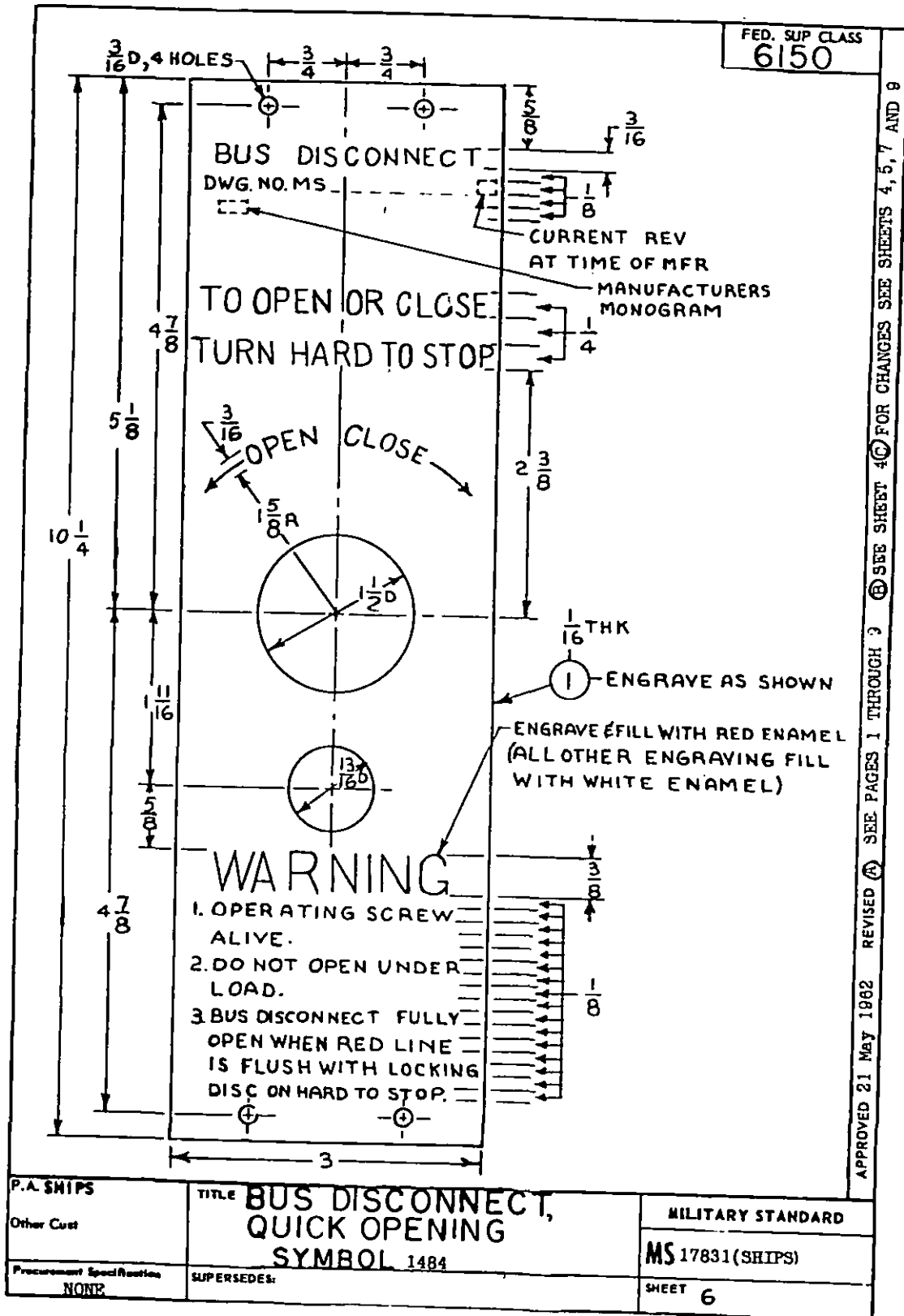
SUPERSEDES

SHEET

5

APPROVED 21 MAY 1962 REVISED (A) SEE PAGES 1 THROUGH 9 (B) SEE SHEET 4 (C) FOR CHANGES SEE SHEETS 4, 5, 7 AND 8

This military standard is approved by the Naval Ship Engineering Center Department of the Navy and is mandatory for use by that activity. All other military activities are required to employ this standard where suitable.





FED. SUP CLASS

6150

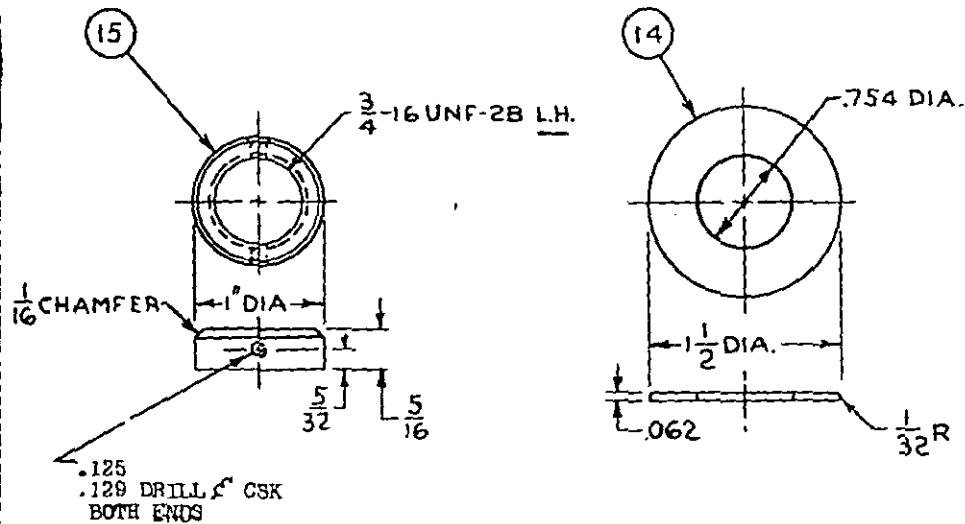


TABLE I

RATING OF QUICK OPENING BUS DISCONNECT				DISCONNECT TEMP		MILLIVOLT DROP *	
SIZE OF BUS BAR	AMPERE	TIME	TEMP RISE	START	END	12" CTR	6" CTR
(4) 1/4 X 5	7,000	CONTINUOUS	70°C	—	—		
(4) 1/4 X 5	10,000	1/2 HR.	55°C	32°C	87°C		
(4) 1/4 X 5	12,000	1/2 HR.	101°C	43°C	144°C		
(4) 1/4 X 5	5,400	CONTINUOUS	55°C	—	79.4°C	11.5	8.4
(4) 1/4 X 5	10,000	1/2 HR.	52.2°C	75°C	127.2°C	25.1	18.2
(4) 1/4 X 5	10,500	1/2 HR.	76.7°C	75°C	151.7°C	30.2	22.2
(4) 1/4 X 5	12,000	1/2 HR.	95°C	75°C	170°C	34.2	24.8

\* MILLIVOLT DROP AT DISCONNECT TEMP.

This military standard is approved by the Naval Ship Engineering Center Department of the Navy and is mandatory for use by that activity. All other military activities are required to employ this standard where suitable.

P.A. SHIPS	TITLE BUS DISCONNECT, QUICK OPENING SYMBOL 1484	MILITARY STANDARD
Other Cost		MS 17831(SRIPS)
Procurement Specification NONE	SUPERSEDES.	SHEET 8

APPROVED 21 MAY 1962 REVISED (A) SEE PAGE 1 THROUGH 9 (B) SEE SHEET 4 (C) FOR CHANGES SEE SHEETS 4, 5, 7 AND 9



FED. SUP CLASS  
6150

## REQUIREMENTS

1. DETAIL AND GENERAL REQUIREMENTS SHALL COMPLY WITH NOTES 2,23,25,44,66 & 67 OF MILITARY STANDARD MS16662.
2. SAMPLING, INSPECTION AND TEST PROCEDURE SHALL COMPLY WITH NOTES 37,40, 54,55,56 & 65 OF MILITARY STANDARD MS16662.
3. SILVER BRAZING ALLOY SHALL BE COMMERCIAL GRADE BAG-1a. THE SURFACE TO BE BRAZED SHALL BE ESTABLISHED AT NOT LESS THAN .002 IN. AND NOT MORE THAN .005 IN. AT ANY GAP SECTION.
4. AFTER FINISH MACHINING, PCS. 9, 10 & 11 SHALL BE SILVER-PLATED TO A MINIMUM OF .002 IN. THICKNESS.
- ⑤ 5. EDGES, HOLES & MACHINED SURFACES OF GMG INSULATING MATERIAL SHALL BE GIVEN ONE COAT OF INSULATING VARNISH CLASS 105, TYPE AN OF MIL-I-24092.
6. CARE SHALL BE EXERCISED TO PROTECT CONTACT SURFACES FROM INJURY AT ALL TIMES.
- ⑤ 7. RIVETS, PCS. 24 AND 25 SHALL BE SOLID STOCK .125±.003 DIA. AND .250±.003 DIA. RESPECTIVELY, LENGTH TO SUIT, HEADED-OVER AND GROUND SMOOTH BOTH ENDS AFTER ASSEMBLY, SEE SHEET 1.

## NOTES

1. THIS BUS DISCONNECT IS NOT INTENDED TO INTERRUPT CURRENT.
2. THIS BUS DISCONNECT IS INTENDED TO BE OPERATED WITH INSULATED WRENCH SHOWN ON MS17832.
3. THIS BUS DISCONNECT IS INSULATED FOR MAXIMUM OF 1000 VOLTS. DISCONNECT VOLTAGE TO GROUND IS DICTATED BY BUS BAR SUPPORTS USED AT INSTALLATION.
4. WHEN CONNECTED TO FOUR 1/4 X 5 BUS BARS, THIS DISCONNECT IS DESIGNED TO CARRY 7000 AMPERES CONTINUOUSLY. FOR TEST DATA SEE TABLE I.
5. TYPICAL INSTALLATION OF THIS FITTING IS SHOWN ON BUSHIPS DWG. 9000-56202-73980, SECTION 5, Sheet 153.
6. For design feature purposes, this standard takes precedence over procurement documents referenced herein.
7. Referenced documents shall be of the issue in effect on date of invitation for bids.
8. Laminated plastic parts may be molded of plastic material. MIL-M-14, types MPI-20 or MAI-60, if desired.

PROJECT NO. 6150-MU10

P.A. SHIPS	TITLE	MILITARY STANDARD
Other Cost	BUS DISCONNECT, QUICK OPENING SYMBOL 1484	MS 17381(SHIPS)
Procurement Specification NONE	SUPERSEDES:	SHEET 9

This military standard is approved by the Naval Ship Engineering Center Department of the Navy and is mandatory for use by that activity. All other military activities are required to employ this standard where suitable.

APPROVED 21 MAY 1982 REVISED (A) SEE PAGES 1 THROUGH 9 (B) SEE SHEET 4 (C) FOR CHANGES SEE SHEETS 4, 5, 7 AND 9