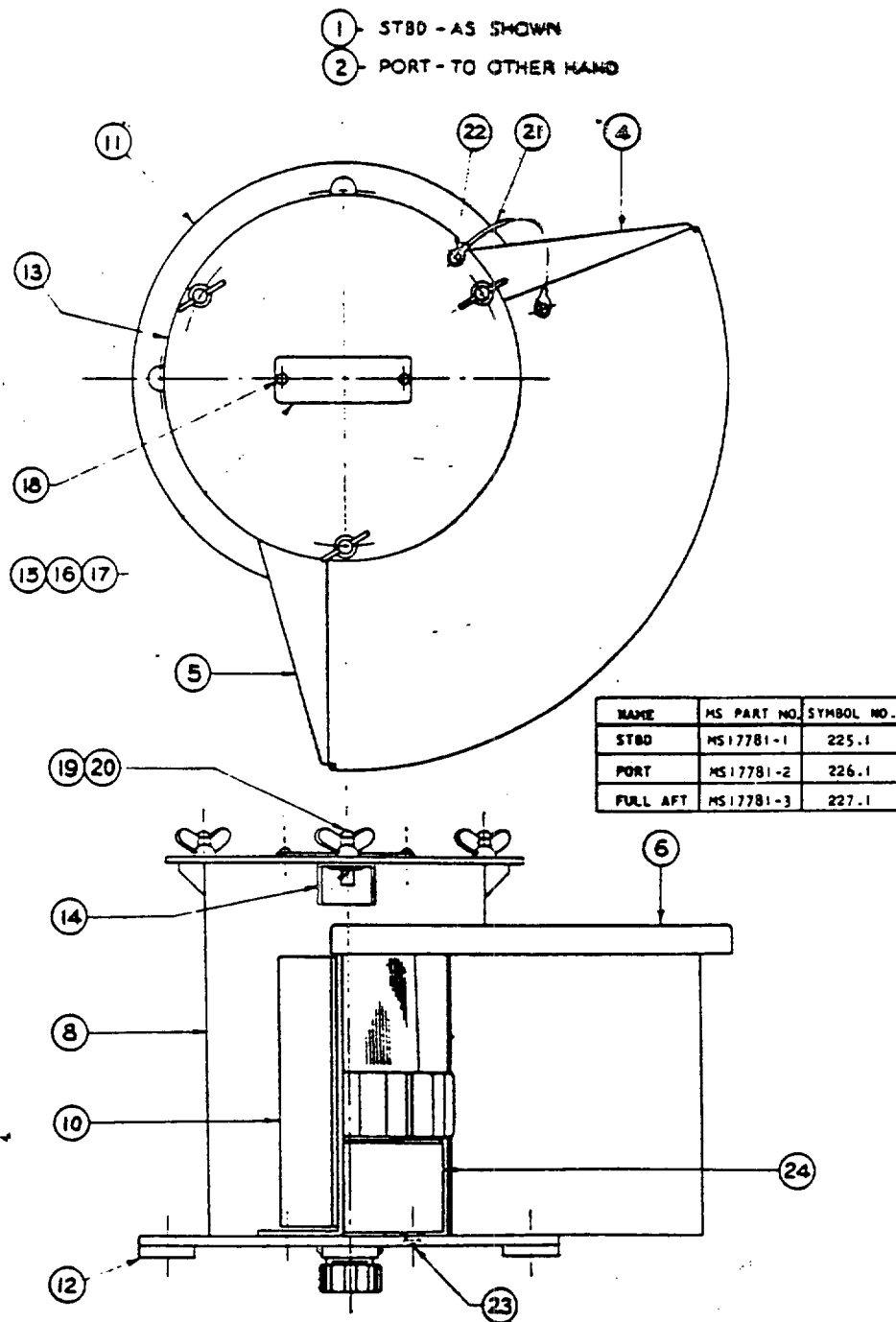


FED. SUP CLASS
6220

AMSC N/A

DISTRIBUTION STATEMENT A. Approved for public release, distribution is unlimited.

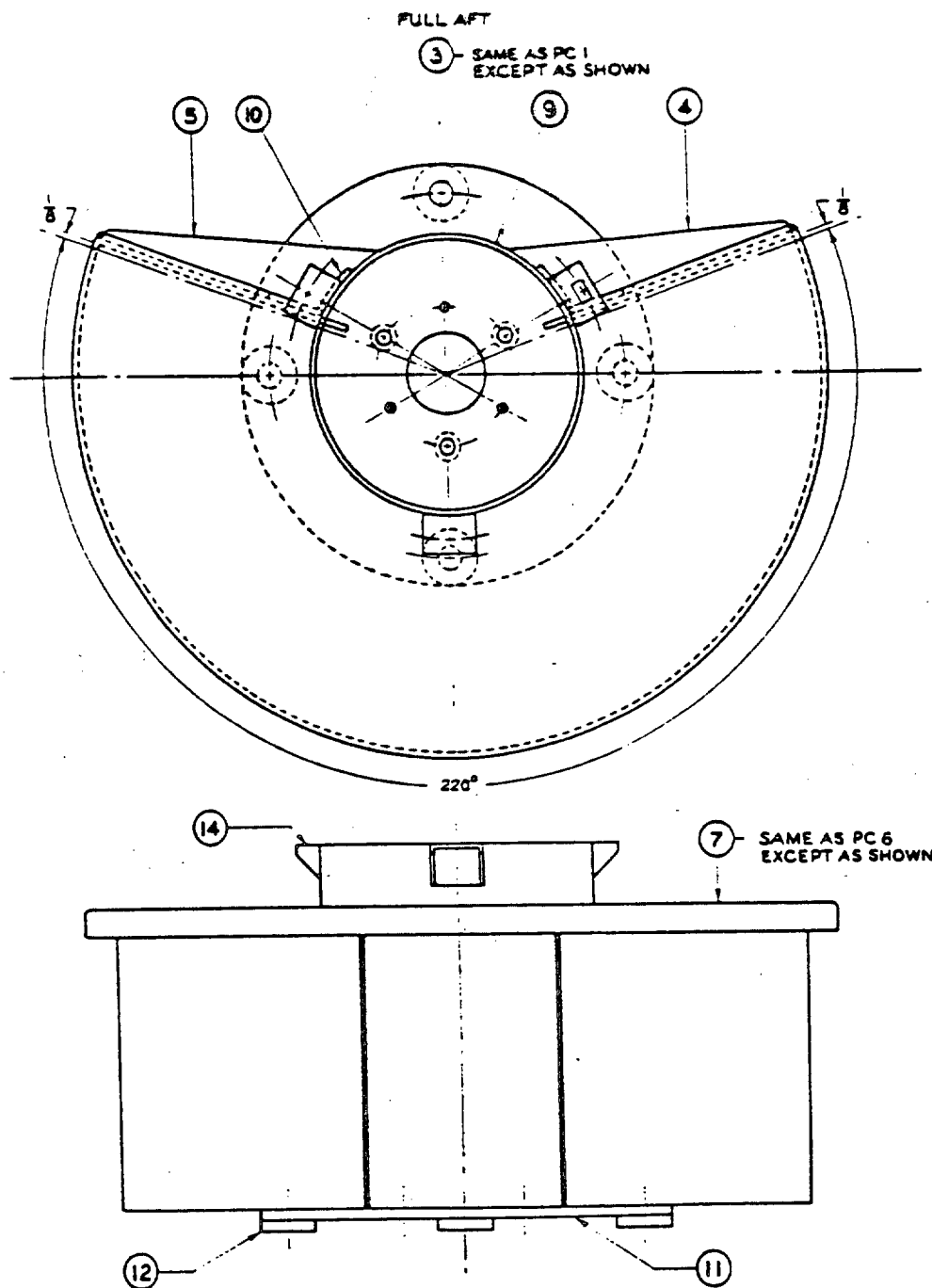
P. A. SH Other Cust	INTERNATIONAL INTEREST	TITLE LIGHT, STATION KEEPING STARBOARD-PORT-FULL AFT	MILITARY STANDARD MS 17781A(SH)
PROCUREMENT SPECIFICATION MIL-F-16377	SUPERSEDES:	DWG. 9-S-5300-L	SHEET 1 OF 4

DD FORM 672-1 (LIMITED COORDINATION)
1 MAY 73

PREVIOUS EDITIONS OF THIS FORM ARE OBSOLETE

APPROVED 1 JUN 1962 REVISED A 12 OCT 1988 (SEE SHEET 3)

This military standard is approved for use by the Naval Sea Systems Command, Department of the Navy and is available for use by all Departments and Agencies of the Department of Defense.

FED. SUP CLASS
6220

This military standard is approved for use by the Naval Sea Systems Command, Department of the Navy and is available for use by all Departments and Agencies of the Department of Defense.

APPROVED 1 JUN 1962 REVISED (A) 12 OCT 1988 (SEE SHEET 3)

P. A. SH Other Cust.	INTERNATIONAL INTEREST	TITLE LIGHT, STATION KEEPING STARBOARD-PORT-FULL AFT	MILITARY STANDARD MS 17781A(SH)
PROCUREMENT SPECIFICATION MIL-F-16377	SUPERSEDES: DWG. 9-S-5300-L	SHEET 2 OF 4	

LIST OF MATERIAL - QUANTITIES FOR ONE UNIT							
PG. NO.	NAME	QUANTITY			MATERIAL	SPECIFICATION	REQUIREMENTS
		SYM. 225.1	SYM. 226.1	SYM. 227.1			
1	ASSEMBLY, LIGHT SHIELD, STBD.						
2	ASSEMBLY, LIGHT SHIELD, PORT						
3	ASSEMBLY, LIGHT SHIELD, FULL AFT.						
4	SCREEN, DIAGONAL	1	1	1	ALUMINUM	5052-H32	SEE REQ'T 2
5	SCREEN, DIAGONAL	1	1	1	ALUMINUM	5052-H32	SEE REQ'T 2
6	SHIELD, TOP	1	1		ALUMINUM	5052-H32	SEE REQ'T 2
7	SHIELD, TOP			1	ALUMINUM	5052-H32	SEE REQ'T 2
8	HOUSING	1	1		ALUMINUM	5052-H32	SEE REQ'T 2
9	HOUSING			1	ALUMINUM	5052-H32	SEE REQ'T 2
10	ANGLE, SUPPORT, 6 1/16 LG	2	2	2	ALUMINUM	1-1/4 x 1-1/4 x 1/8	
11	PLATE, BASE	1	1	1	ALUMINUM	5052-H32	SEE REQ'T 2
12	PAD, 1 1/4 DIA	4	4	4	ALUMINUM	5052-H32	
13	COVER	1	1	1		MS17788, PC 9	SEE REQ'T 2
14	BRACKET, MOUNTING	3	3	3		MS17788, PC 11	
15	PLATE, IDENTIFICATION	1			ALUMINUM	MIL-P-15024 TYPE A OR H, SIZE 4	
16	PLATE, IDENTIFICATION		1		ALUMINUM	MIL-P-15024 TYPE A OR H, SIZE 4	
17	PLATE, IDENTIFICATION			1	ALUMINUM	MIL-P-15024 TYPE A OR H, SIZE 4	
18	RIVET, 1/8" DIA.	2	2	2	ALUMINUM		
19	FASTENER, SPRING LOCK	3	3	3			SEE REQ'T 3
20	GROMMET, CLINCH	3	3	3			SEE REQ'T 3
21	CABLE, SAFETY (WIRE ROPE)	1	1	1		MS17339-1	
22	RIVET	2	2	2	ALUMINUM	MS17312	
23	SCREW, 3/8-16 F.H., 5/8 LG.	3	3	3	CRES.		
24	LIGHT, FIXTURE, COMPLETE	1	1	1	SYM. NO.114.1	MIL-L-24560/2	

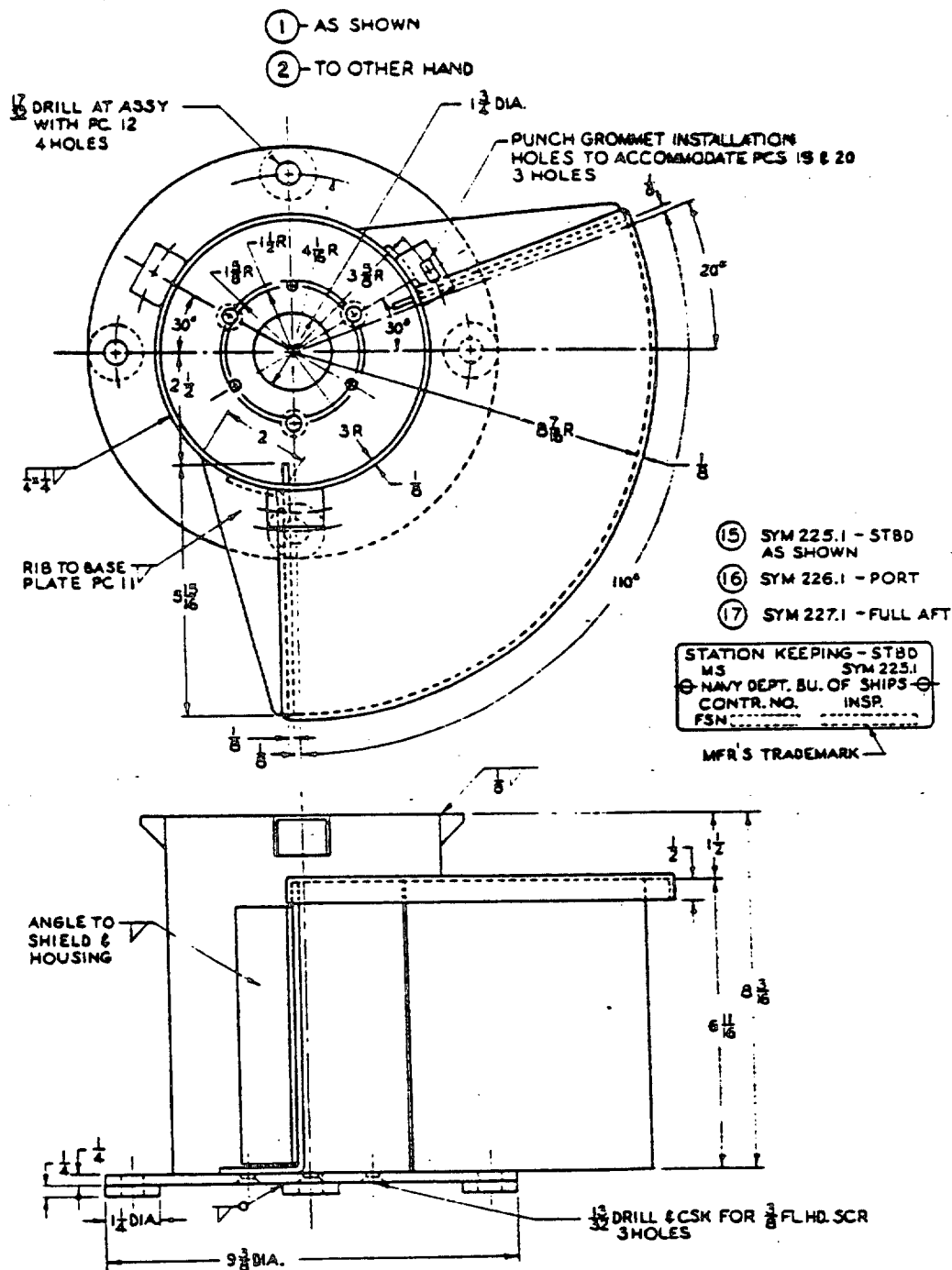
REQUIREMENTS

1. LIGHT SHOWN HEREON SHALL COMPLY WITH AND BE TESTED IN ACCORDANCE WITH THE APPLICABLE REQUIREMENTS OF MILITARY SPECIFICATION MIL-F-16377.
2. ALL ILLUMINATED SURFACES OF PCS. 4, 5, 6, 7, 8, 9, 11, & 13 SHALL RECEIVE 2 COATS OF DULL BLACK DECK PAINT PER DOD-P-15146, FORMULA NO. 104 APPLIED OVER THE PRIMER COATED SURFACES. ALL OTHER SURFACES OF PCS. 4, 5, 6, 7, 8, 9, 11, & 13 SHALL RECEIVE 2 COATS OF GRAY MACHINERY ENAMEL OF A GOOD COMMERCIAL GRADE.
3. SPRING-LOCK FASTENER SHALL BE 1/4 WING HEAD WITH CLINCH GROMMET, SIMMONS FASTENER, NO. BROADWAY, ALBANY 1, N.Y. OR EQUAL.

NOTES

1. FOR DESIGN FEATURE PURPOSES, THIS STANDARD TAKES PRECEDENCE OVER PROCUREMENT DOCUMENTS REFERENCED HEREIN.
2. REFERENCED DOCUMENTS SHALL BE OF THE ISSUE IN EFFECT ON DATE OF INVITATIONS FOR BID.

P. A. SH Other Cust	INTERNATIONAL INTEREST	TITLE LIGHT, STATION KEEPING STARBOARD-PORT-FULL AFT	MILITARY STANDARD MS 17781A(SH)
PROCUREMENT SPECIFICATION MIL-F-16377	SUPERSEDES: DWG. 9-S-5300-L	SHEET 3 OF 4	

FED. SUP CLASS
6220

This military standard is approved for use by the Naval Sea Systems Command, Department of the Navy and is available for use by all Departments and Agencies of the Department of Defense.

P. A. SH Other Cust	INTERNATIONAL INTEREST	TITLE LIGHT, STATION KEEPING STARBOARD-PORT-FULL AFT	MILITARY STANDARD MS17781A(SH)
PROCUREMENT SPECIFICATION MIL-F-16377	SUPERSEDES: DWG. 9-S-5300-L	SHEET 4 OF 4	

DD FORM 672-1 (LIMITED COORDINATION)

PREVIOUS EDITIONS OF THIS FORM ARE OBSOLETE

(Project 6220-N359)

APPROVED 1 JUN 1962 REVISED (A) 12 OCT 1988 (SEE SHEET 3)