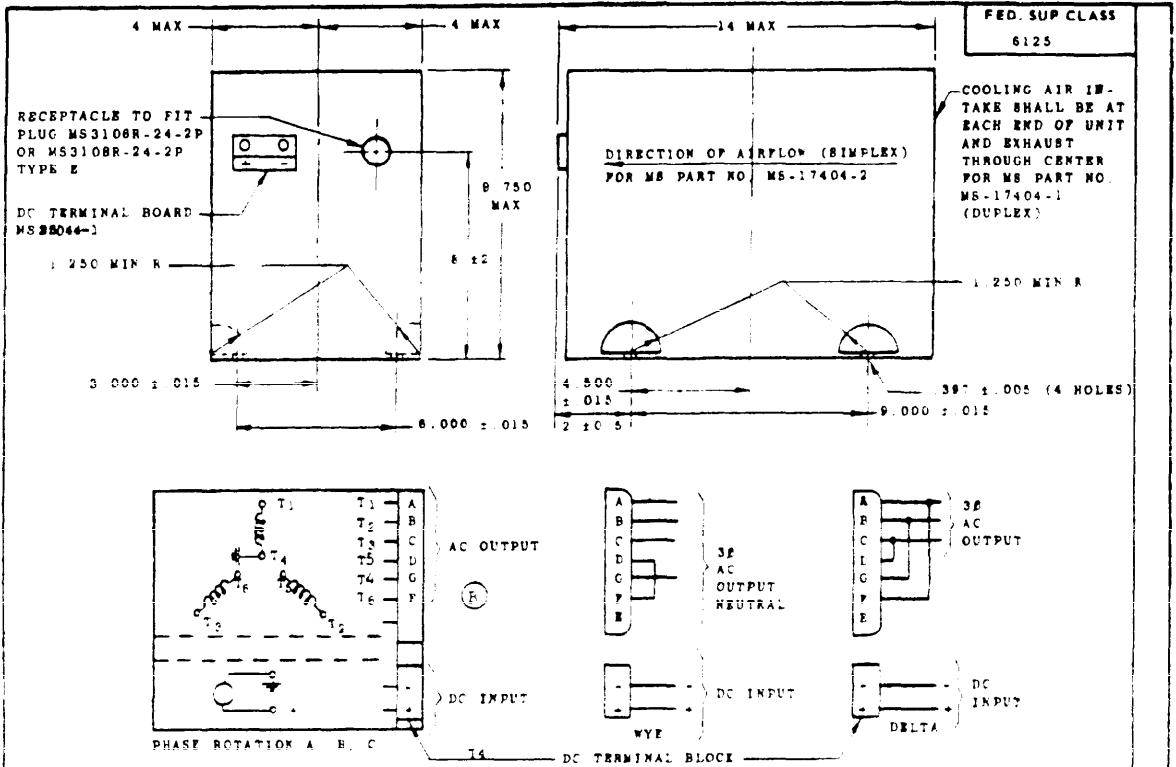


OTHER INTEREST: NAA - REVIEW PRVIRN/USER INFORMATION IS CURRENT AS OF THE DATE OF THIS DOCU-
 EL - REVIEW MENT FOR FUTURE COORDINATION OF CHANGES TO THIS DOCUMENT DRAFT
 CG - USER CIRCULATION SHOULD BE BASED ON THE INFORMATION IN THE CURRENT DODDIS.



FED. SUP CLASS
6125

COOLING AIR INTAKE SHALL BE AT EACH END OF UNIT AND EXHAUST THROUGH CENTER FOR MS PART NO. MS-17404-1 (DUPLEX)

ME PART NO.	COOLING AIRFLOW
MS-17404-1	DUPLEX
MS-17404-2	SIMPLEX

CONNECTIONS EXTERNAL TO THE INVERTER NECESSARY FOR WYE (115/200 VOLT) AND DELTA (115 VOLT) CONNECTIONS FOR 1Φ CONNECTION SEE (a)

	3Φ	1Φ
INPUT VOLTS DC	28	28
OUTPUT VOLTS AC	115/200	115
FREQUENCY CPS	400	400
VA TO 50,000 FEET ALTITUDE	2500	2500
VA TO 65,000 FEET ALTITUDE	1250	1250
PF MIN LAG PERCENT	95	95
PF MIN LEAD PERCENT	95	95
MIN OUTPUT VOLTAGE AT 200 PERCENT RATED CURRENT	50/85	50
MIN EFFICIENCY PERCENT AT RATED LOAD SEA LEVEL AND 25°C ± 15°C	55	50
WEIGHT POUNDS MAX	42	45

FOR ANY COMBINATION OF CONDITIONS LISTED BELOW THE OUTPUT VOLTAGE AND FREQUENCY SHALL REMAIN WITHIN THE INDICATED LIMITS

CONDITIONS	LIMITS	
	VOLTAGE	FREQ. (CPS)
INPUT VOLTAGE VARIED BETWEEN 26 & 28 VOLTS LOAD VARIED FROM NO LOAD TO FULL LOAD AMBIENT TEMPERATURE - ALTITUDE VARIED WITHIN THE RANGE ESTABLISHED BY CURVE 1 OF MS33543 EXCEPT AMBIENT TEMPERATURE SHALL NOT EXCEED 85°C RATED OUTPUT TO 50,000 FT. 50 PERCENT RATED OUTPUT TO 65,000 FEET.	LOW 110/192 HIGH 120/208	LOW 390 HIGH 410
INPUT VOLTAGE VARIED BETWEEN 26 & 28 VOLTS LOAD POWER FACTOR 1.0 LOAD VARIED FROM NO LOAD TO FULL LOAD ANY FIXED AMBIENT TEMPERATURE BETWEEN -52°C AND +82°C	LOW 111.5/196 HIGH 117.5/204	LOW 390 HIGH 410

(a) THIS INVERTER DESIGN SHALL BE SUCH THAT IT MAY BE LOADED EITHER 3Φ OR 1Φ BUT NOT SIMULTANEOUSLY WHEN USED AS A SINGLE-PHASE INVERTER THE UNIT SHALL BE CONNECTED IN DELTA AND THE LOAD CONNECTED TO TERMINALS A(T₁) AND B(T₂) WHEN USED 3Φ THE LOADS PER PHASE SHALL NOT DIFFER BY MORE THAN 10 PERCENT OF THE INVERTER RATING.

- NOTES
- DIMENSIONS IN INCHES.
 - THE AIRCRAFT MANUFACTURER SHALL ALLOW CLEARANCE OF AT LEAST ONE INCH AT EACH END OF THE INVERTER IN ADDITION TO THE MAXIMUM DIMENSIONS SHOWN ON THIS DRAWING FOR INSTALLATION.
 - FOR NAVY APPLICATION INVERTERS WITH EITHER SIMPLEX OR DUPLEX COOLING AIRFLOW CONFIGURATION ARE ELECTRICALLY AND MECHANICALLY INTERCHANGEABLE WITH EACH OTHER.

(H) REVISED

This military standard is approved by the Department of Defense and is mandatory for use by all Departments & Agencies of the Department of Defense. Selection for all new engineering and design applications and for resupply use shall be made from this document.

P.A. NAVY-AS	TITLE	MILITARY STANDARD
Other Cust	INVERTER, AIRCRAFT, 2500 VA, 3/1 PHASE, 400 CYCLE, CLASS B, MULTI-PURPOSE	MS17404
AF - 11 Army - ME		
PROCUREMENT SPECIFICATION MIL-I-7032	SUPERSEDES MS-28098 AND MS-25097	SHEET 1 OF 2

APPROVED 9 JAN 1962 REVISED (A) 3 FEB 1961 (B) 20 JAN 67

FED. SUP CLASS
6125

4. THE WEIGHT AND DIMENSIONS SHOWN ON THIS DRAWING SHALL INCLUDE THE WEIGHT AND DIMENSIONS OF ALL AUXILIARY APPARATUS NECESSARY TO MAKE THE UNIT CONFORM TO THE PROCUREMENT SPECIFICATION.
5. PART NO. MS17404-1 SUPERSEDES MS25096-1 AND MS25097-1.
PART NO. MS17404-2 SUPERSEDES MS25096-2 AND MS25097-2.
6. A MEANS OF ADJUSTING THE VOLTAGE SHALL BE ON THE CONNECTOR END AND ABOVE THE HORIZONTAL CENTERLINE OF THE INVERTER.
7. PERMISSION OF THE PROCURING ACTIVITY SHALL BE OBTAINED FOR APPLICATION OF THIS UNIT OUTSIDE OF THE SPECIFIED LIMITS.
8. TWO PLACARDED PIN JACKS SHALL BE PROVIDED ON THE CONNECTOR END AND ABOVE THE HORIZONTAL CENTERLINE OF THE INVERTER BETWEEN WHICH THE VOLTAGE BETWEEN A(T₁) AND G(T₂) CAN BE MEASURED. THE PIN JACKS SHALL ACCEPT A PROD PIN .078 ± .002 INCHES IN DIAMETER.
9. THIS UNIT SHALL BE PROVIDED WITH A STATIC SEMI-CONDUCTOR TYPE VOLTAGE AND FREQUENCY REGULATOR.
10. FOR DESIGN FEATURE PURPOSES, THIS STANDARD TAKES PRECEDENCE OVER PROCUREMENT DOCUMENTS REFERENCED HEREIN.
11. REFERENCED DOCUMENTS SHALL BE OF THE ISSUE IN EFFECT ON DATE OF INVITATIONS FOR BID.

OTHER INTEREST: SAA - REVIEW REVIEW/USER INFORMATION IS CURRENT AS OF THE DATE OF THIS DOCUMENT.
 EE - REVIEW FOR FUTURE COORDINATION OF CHANGES TO THIS DOCUMENT. DRAFT CIRCULATION SHOULD BE BASED ON THE INFORMATION IN THE CURRENT DODISS.
 CC - USER

This military standard is approved by the Department of Defense and is mandatory for use by all Departments & Agencies of the Department of Defense. Selection for all new engineering and design applications and for repetitive use shall be made from this document.

APPROVED 6 JAN 1962 REVISED 1 PER 1001 (R) SHEET 1

P.A. NAVY - AS Other Cust AF - 11 Army - ME	TITLE	MILITARY STANDARD
	INVERTER, AIRCRAFT, 2500 VA, 3/1 PHASE, 400 CYCLE, CLASS B, MULTI-PURPOSE	MS17404
PROCUREMENT SPECIFICATION MIL-I-7032	SUPERSEDES: MS-25096 AND MS-25097	SHEET 2

DD FORM 672-1 (Coordinated)

PREVIOUS EDITIONS OF THIS FORM ARE OBSOLETE.