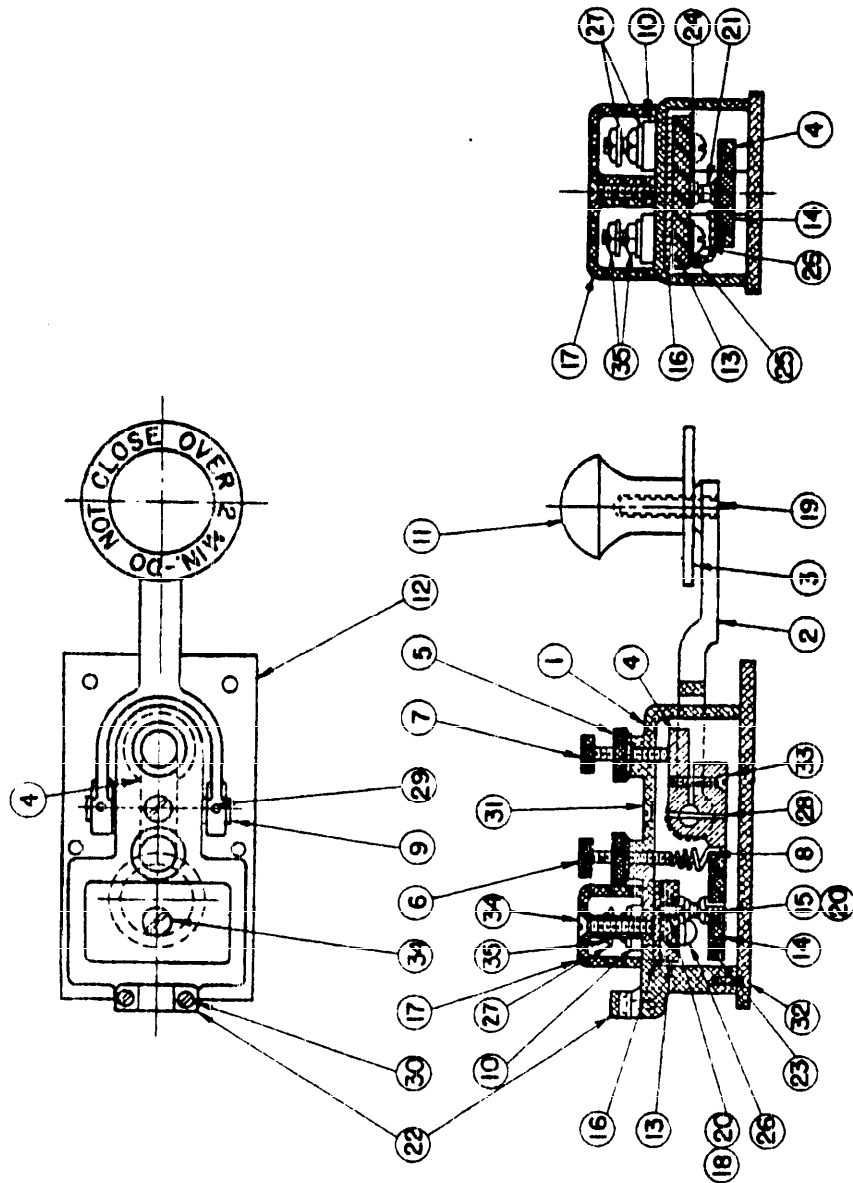


This standard has been approved by the Bureau of Ships Department of the Navy and is mandatory for use by that activity. All other military activities are required to employ this standard where suitable.

NOTICE: When Government drawings, specifications, or other data are used for any purpose other than in connection with a definitely related Government procurement operation the United States Government thereby incurs no responsibility, nor any obligation whatsoever; and the fact that the Government may have formulated, furnished, or in any way supplied the said drawings, specifications, or other data is not to be regarded by implication or otherwise as in any manner licensing the holder or any other person or corporation, or conveying any rights or permission to manufacture, use, or sell any patented invention that may in any way be related thereto.



FED. SUP CLASS
6220

APPROVED 5 DEC 1961 REVISED

P.A. SHIPS Other Cust	TITLE KEY SIGNALLING SEARCHLIGHT TOTALLY ENCLOSED TYPE 26003A	MILITARY STANDARD MS17397(SHIPS)
PROCUREMENT SPECIFICATION	SUPERSEDES DWG. 18-T-4173-L	SHEET 1 OF 11

NOTICE: When Government drawings, specifications, or other data are used for any purpose other than in connection with a definitely related Government procurement operation, the United States Government thereby incurs no responsibility, nor any obligation whatsoever, and the fact that the Government may have furnished, furnished, or in any way supplied, the said drawings, specifications, or other data is not to be regarded by implication or otherwise as an endorsement, approval, or any other action or participation, or conveying any rights or permission to reproduce, use, or sell any product or invention that may in any way be related thereto.

This standard has been approved by the Bureau of Ships Department of the Navy and is mandatory for use by that activity. All other military activities are required to employ this standard where suitable.

LIST OF MATERIAL - QUANTITIES FOR ONE UNIT				
PC. NO.	NAME	QTY.	MATERIAL	MATL. SPEC. OR STD. DWG. NO.
1	KEY FRAME	1	ALUMINUM ALLOY	
2	KEY LEVER	1	ALUMINUM ALLOY	
3	GUARD	1	CANVAS PANELITE	
4	ARM	1	BRASS	WHITE NICKEL
5	LOCKNUT	2	BRASS	WHITE NICKEL
6	SPRING ADJ. SCREW	1	BRASS	WHITE NICKEL
7	STOP ADJ. SCREW	1	BRASS	WHITE NICKEL
8	SPRING	1	PHOS BRONZE	WHITE NICKEL
9	SHAFT	1	STAINLESS STEEL	
10	BUSHING	2	LAM. PHENOL TYPE FRG	SEE REQUIREMENT 4 MIL-P-15035
11	KNOB	1	MOLD. PHENOL TYPE MBI-60	MIL-M-14
12	BASE	1	ALUMINUM	
13	INSULATOR	1	LAM. PHENOL TYPE FRG	SEE REQUIREMENT 4 MIL-P-15035
14	ARM BUSHING	1	LAM. PHENOL TYPE FRG	SEE REQUIREMENT 4 MIL-P-15035
15	ARM CONTACT BUSHING	1	BRASS	WHITE NICKEL
16	INSULATOR	1	LAM. PHENOL TYPE FRG	SEE REQUIREMENT 4 MIL-P-15035
17	BINDING POST COVER	1	MOLD. PHENOL TYPE MBI-60	MIL-M-14
18	CONTACT BUSHING	1	BRASS	WHITE NICKEL
19	KNOB INSERT	1	BRASS	WHITE NICKEL
20	CONTACT SCREW	2	BRASS	WHITE NICKEL
21	CONTACT	2	COIN SILVER	
22	KEY CABLE CLAMP	1	ALUMINUM	BLACK CRACKLE
23	PIV	3	BRASS	WHITE NICKEL
24	LEAD	1	BRASS	WHITE NICKEL
25	LEAD ASSEMBLY (SEE DETAIL)	1		
26	8-32 X 7/8 R H SCREW	2	BRASS	WHITE NICKEL
27	* 3 WASHER	4	BRASS	WHITE NICKEL
28	6/0 X 5/8 TAPER PIN	1	COR RESIST STEEL	
29	6/0 X 1/2 TAPER PIN	2	COR RESIST STEEL	
30	4-40 X 5/16 R H SCREW	2	BRASS	WHITE NICKEL
31	4-40 X 1/8 P H SCREW	1	BRASS	WHITE NICKEL
32	6-32 X 3/8 P H SCREW	3	BRASS	WHITE NICKEL
33	6-32 X 1/2 P H SCREW	1	BRASS	WHITE NICKEL
34	6-32 X 3/4 P H SCREW	1	BRASS	WHITE NICKEL
35	8-32 X 1/8 X 11/32 HEX NUT	4	BRASS	WHITE NICKEL

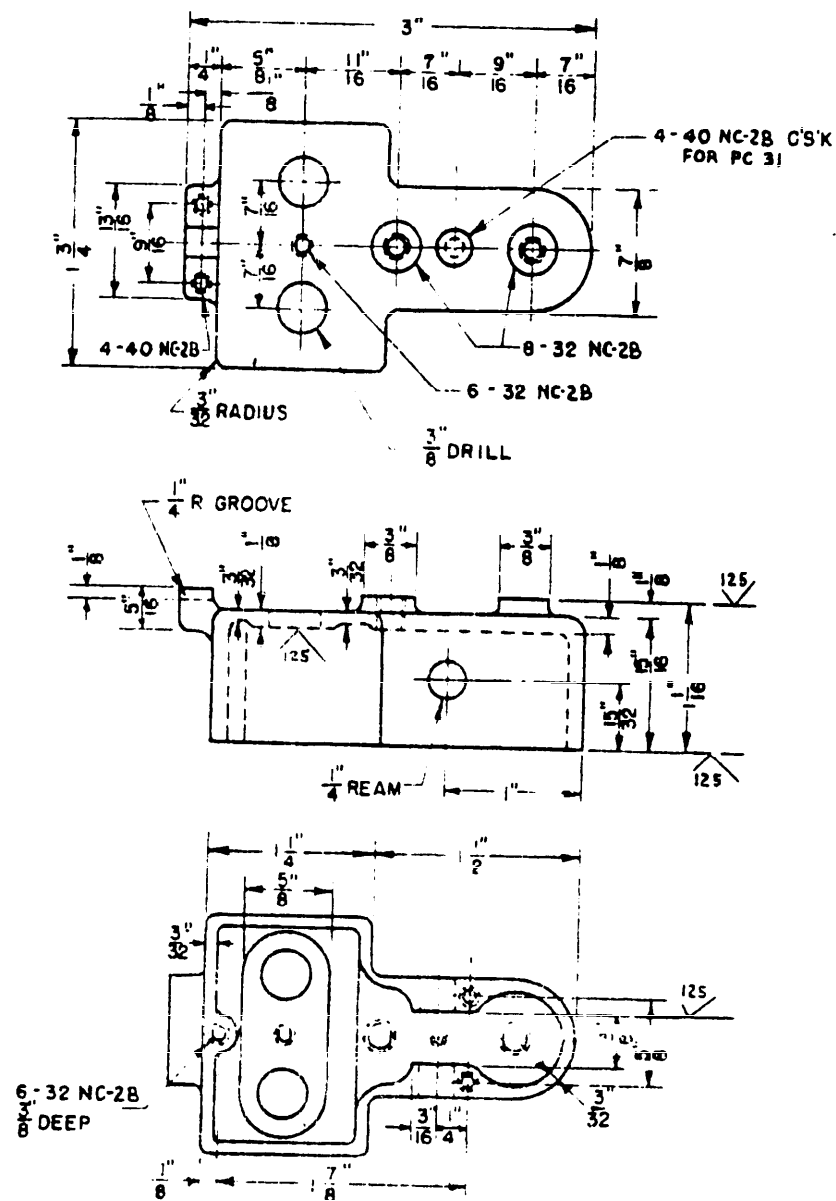
FED SUP CLASS
6 220

APPROVED 5 OCT 1961 REVISED

P.A. SHIPS	TITLE	MILITARY STANDARD
Other Cost	KEY SIGNALLING SEARCHLIGHT TOTALLY ENCLOSED TYPE 26003A	MS 17397 (SHIPS)
PROCUREMENT SPECIFICATION	SUPERSEDES	SHEET 2 OF
	DWG. 18-T-4173-L	

NOTICE:—When Government drawings, specifications, or other data are used for any purpose other than in connection with a definitely related Government procurement operation, the United States Government thereby incurs no responsibility, nor any obligation whatever, and the fact that the Government may have formulated, furnished, or in any way supplied the said drawings, specifications, or other data is not to be regarded as an implication or otherwise as in any manner, licensing the holder or any other person or corporation, or conveying any rights or permission to manufacture, use, or sell any patented invention that may in any way be related thereto.

This standard has been approved by the BUREAU OF SHIPS Department of the NAVY and is mandatory for use by that activity. All other military activities are required to employ this standard where suitable.



(1) ANNEAL & BLACK ENAMEL
OUTSIDE BLACK INSIDE

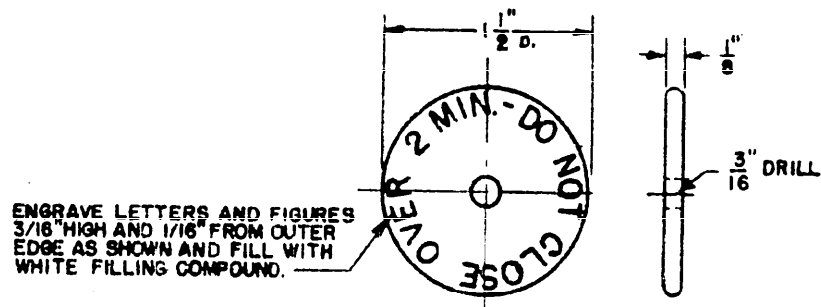
FED. SUP CLASS
6220

APPROVED 57 REVISED

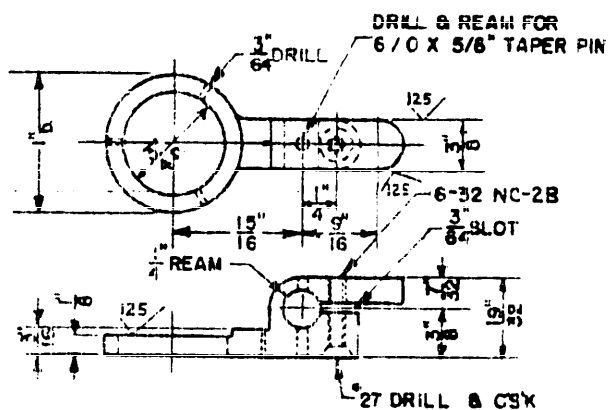
P.A. SHIPS	TITLE	MILITARY STANDARD
Other Cost	KEY SIGNALLING SEARCHLIGHT TOTALLY ENCLOSED TYPE 26003A	MS 17397 (SHIPS)
Procurement Specification	SUPERSEDES	SHEET 3 OF
	DWG. 18-T-4173-L	

NOTICE.—When Government drawings, specifications, or other data are used for any purpose other than in connection with a definitely related Government procurement operation, the United States Government thereby incurs no responsibility, nor any obligation whatsoever; and the fact that the Government may have formulated, furnished, or in any way supplied the said drawings, specifications, or other data is not to be regarded by implication or otherwise as in any manner licensing the holder or any other person or corporation, or conveying any rights or permission to manufacture, use, or sell any patented invention that may in any way be related thereto.

This standard has been approved by the BUREAU OF SHIPS Department of the NAVY and is mandatory for use by that activity. All other military activities are required to employ this standard where suitable.



(3)



(4)

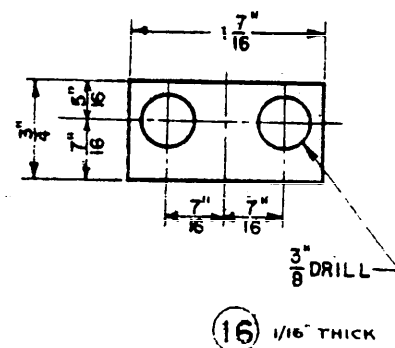
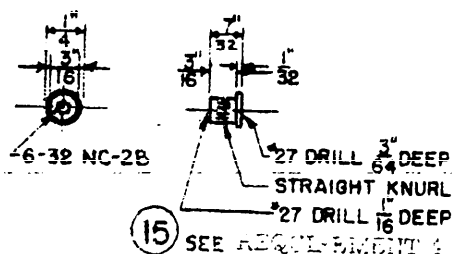
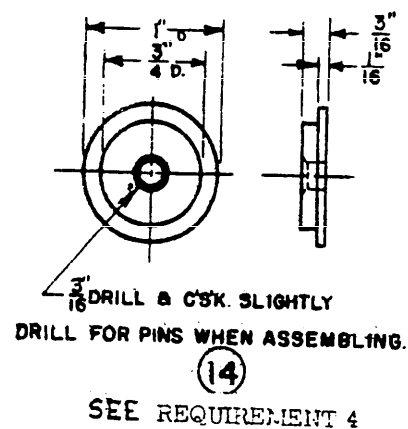
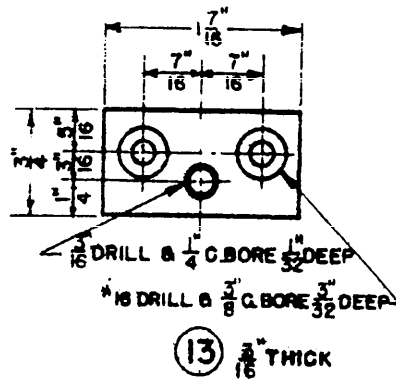
APPROVED 5 JUL 1951 REVISED

P.A. SHIPS	TITLE	MILITARY STANDARD
Other Cust	KEY SIGNALLING SEARCHLIGHT TOTALLY ENCLOSED TYPE 26003A	MS 17397 (SHIPS)
Procurement Specification	SUPERSEDES: DWG. 18-T-4173-L	SHEET 1 OF

<div style="text-align: right; border: 1px solid black; padding: 2px;"> FED. SUP CLASS 6 2 2 0 </div>		
<div style="display: flex; justify-content: space-around; align-items: flex-end;"> <div style="text-align: center;"> <p>5</p> </div> <div style="text-align: center;"> <p>6</p> </div> </div>		
<div style="display: flex; justify-content: space-around; align-items: flex-end;"> <div style="text-align: center;"> <p>7</p> </div> <div style="text-align: center;"> <p>8</p> </div> </div>		
<div style="display: flex; justify-content: space-between;"> <div> P.A. SHIPS Other Cust Procurement Specification </div> <div> TITLE KEY SIGNALLING SEARCHLIGHT TOTALLY ENCLOSED TYPE 26003A </div> <div> MILITARY STANDARD MS 17397 (SHIPS) </div> </div>		
SUPERSEDES: DWG. 18-T-4173-L		SHEET 5 OF

NOTICE—When Government drawings, specifications, or other data are used for any purpose other than in connection with a definitely related Government procurement operation, the United States Government thereby incurs no responsibility, nor any obligation whatsoever, and the fact that the Government may have formulated, furnished, or in any way supplied the said drawings, specifications, or other data is not to be regarded by implication or otherwise as in any manner licensing the holder or any other person or corporation, or conveying any rights or permission to manufacture, use, or sell any patented invention that may in any way be related thereto.

This standard has been approved by the BUREAU OF SHIPS, Department of the NAVY, and is mandatory for use by that activity. All other military activities are required to employ this standard where suitable.

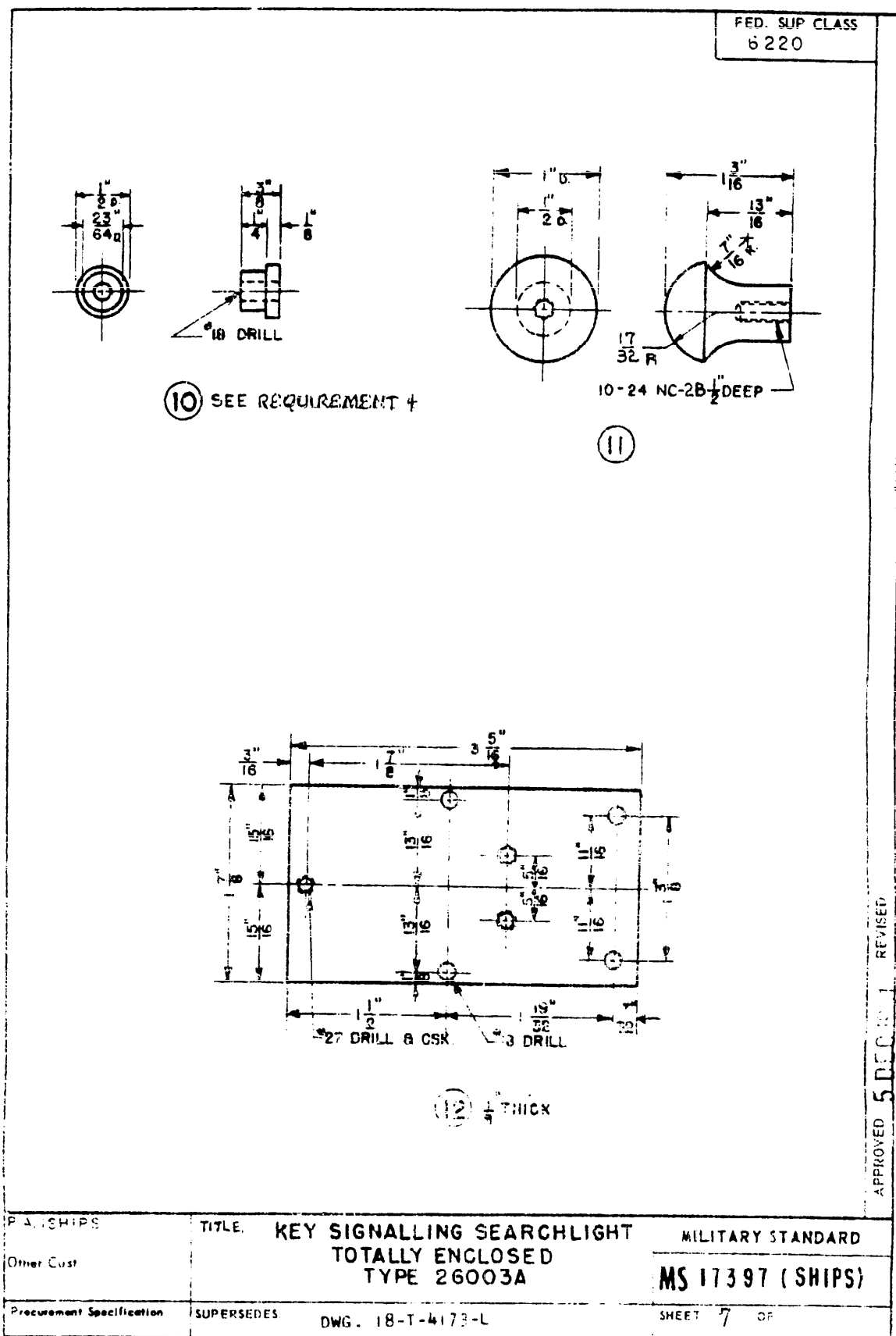


APPROVED 5 JAN 1961 REVISED

P.A. SHIPS	TITLE	MILITARY STANDARD
Other Cust	KEY SIGNALLING SEARCHLIGHT TOTALLY ENCLOSED TYPE 26003A	MS 17397(SHIPS)
Procurement Specification	SUPERSEDES: DWG. 18-T-4173-L	SHEET 6 OF

NOTICE—When Government drawings, specifications, or other data are used for any purpose other than in connection with a definitely related Government procurement operation, the United States Government thereby incurs no responsibility, nor any obligation whatsoever, and the fact that the Government may have formulated, furnished, or in any way supplied the said drawings, specifications, or other data is not to be regarded by implication or otherwise as in any manner licensing the holder or any other person or corporation, or conveying any rights or permission to manufacture use, or sell any patented invention that may in any way be related thereto.

This drawing has been approved by the BUREAU OF SHIPS, Department of the Navy, and is intended for use by the Navy only. All other military activities are required to employ this standard where applicable.



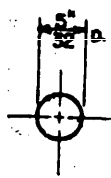
FED. SUP CLASS
6 2 2 0

FED. SUP CLASS 6 2 2 C										
<p>(17)</p>	<p>(18) SEE REQUIREMENT 4</p>									
<p>(19)</p>	<p>(20)</p>									
<table border="1" style="width: 100%; border-collapse: collapse;"> <tr> <td style="width: 20%; vertical-align: top;">P. A. SHIPS</td> <td style="width: 50%; text-align: center;"> TITLE KEY SIGNALLING SEARCHLIGHT TOTALLY ENCLOSED TYPE 26003A </td> <td style="width: 30%; text-align: center;"> MILITARY STANDARD MS 173 97 (SHIPS) </td> </tr> <tr> <td style="vertical-align: top;">Other Cust</td> <td></td> <td></td> </tr> <tr> <td style="vertical-align: top;">Procurement Specification</td> <td>SUPERSEDES DWG. 18-T-4173-L</td> <td style="text-align: center;">SHEET 9 OF</td> </tr> </table>		P. A. SHIPS	TITLE KEY SIGNALLING SEARCHLIGHT TOTALLY ENCLOSED TYPE 26003A	MILITARY STANDARD MS 173 97 (SHIPS)	Other Cust			Procurement Specification	SUPERSEDES DWG. 18-T-4173-L	SHEET 9 OF
P. A. SHIPS	TITLE KEY SIGNALLING SEARCHLIGHT TOTALLY ENCLOSED TYPE 26003A	MILITARY STANDARD MS 173 97 (SHIPS)								
Other Cust										
Procurement Specification	SUPERSEDES DWG. 18-T-4173-L	SHEET 9 OF								

APPROVED 5 DEC 1961 REVISED

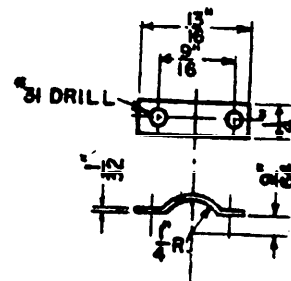
NOTICE.—When Government drawings, specifications, or other data are used for any purpose other than in connection with a definitely related Government procurement operation, the United States Government thereby incurs no responsibility, nor any obligation whatsoever; and the fact that the Government may have formulated, furnished, or in any way supplied the said drawings, specifications, or other data is not to be regarded by implication or otherwise in any manner licensing the holder or any other person or corporation, or conveying any rights or permission to manufacture, use, or sell any potential invention that may in any way be related thereto.

This standard has been approved by the BUREAU OF SHIPS Department of the NAVY and is mandatory for use by that activity. All other military activities are required to employ this standard where suitable.



SOLDER INTO RT. #20

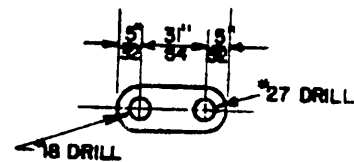
(21) $\frac{1}{16}$ " THICK



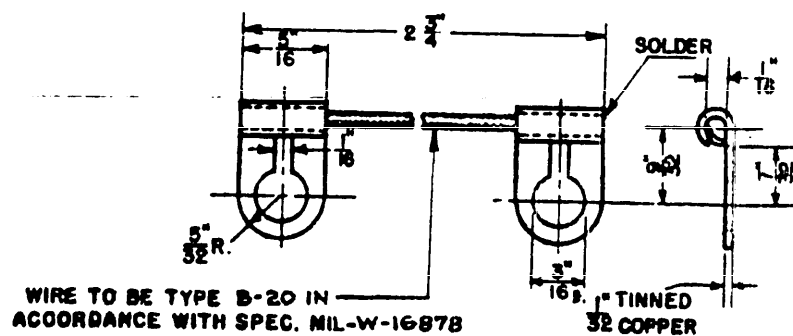
(22)



(23)



(24) $\frac{1}{32}$ " THICK



(25)

P.A. SHIPS	TITLE	KEY SIGNALLING SEARCHLIGHT TOTALLY ENCLOSED TYPE 26003A	MILITARY STANDARD
Other Cust			MS 17397 (SHIPS)
Procurement Specification	SUPERSEDES:	DWG. 18-T-4173-L	SHEET 10 OF

APPROVED 5 DEC 1961 REVISED

NOTICE: When Government drawings, specifications, or other data are used for any purpose other than in connection with a definitely related Government procurement operation, the United States Government thereby incurs no responsibility, nor any obligation whatsoever, and the fact that the Government may have formulated, furnished, or in any way supplied the said drawings, specifications, or other data is not to be regarded by implication or otherwise as in any manner licensing the holder or any other person or corporation, or conveying any rights or permission to manufacture, use, or sell any patented invention that may in any way be related thereto.

Use of this drawing is limited to the use of the Navy and to mandatory use by other activities. All other military activities are required to complete this drawing where suitable.

FED. SUP. CLASS
0220

REQUIREMENTS

1. DETAIL AND GENERAL REQUIREMENTS SHALL COMPLY WITH NOTES 2, 20, 23, 24, 25, 30, 33, 37, 40, 44, 54, 55, 56, 66, 67 ON MIL STD MS10662.
2. THE TYPE NUMBER SHALL BE ENGRAVED IN A CONSPICUOUS PLACE AND FILLED IN WHITE.
3. KEY SHALL CONFORM TO ALL APPLICABLE PARAGRAPHS OF SPEC MIL-S-15099.
4. ALL PHENOLIC PIECES MAY BE MOLDED OF ALKYD, HAI-60, SPEC MIL-M-14, IF DESIRED, AND COMMERCIAL INSERTS (TAP-LOK - MS35974 OR EQUAL) USED IN PIECES 13 AND 14 TO REPLACE PIECES 15 AND 18.

DIMENSIONS ARE IN INCHES

TOLERANCES UNLESS SPECIFIED

DECIMAL DIMENSIONS $\pm .005$

FRACTIONAL DIMENSIONS $\pm 1/64$

PROJECT 0220-10001-1

Other Cust	KEY SIGNALLING SEARCHLIGHT TOTALLY ENCLOSED TYPE 26003A	MILITARY STANDARD MS 17397(SHIPS)
Procurement Specification	SUPERSEDES: DWG. 18-T-4173-L	SHEET 11 OF

APPROVED 5 DEC 1961 REVISED

