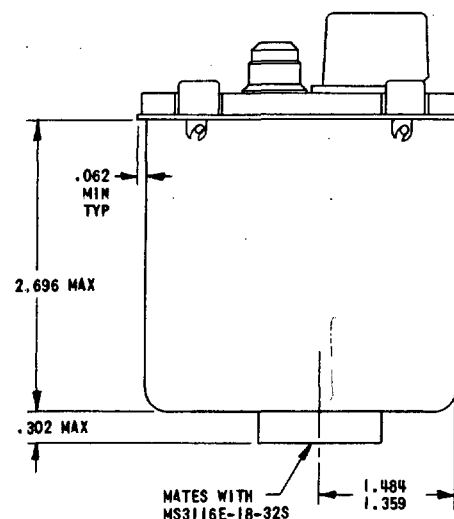
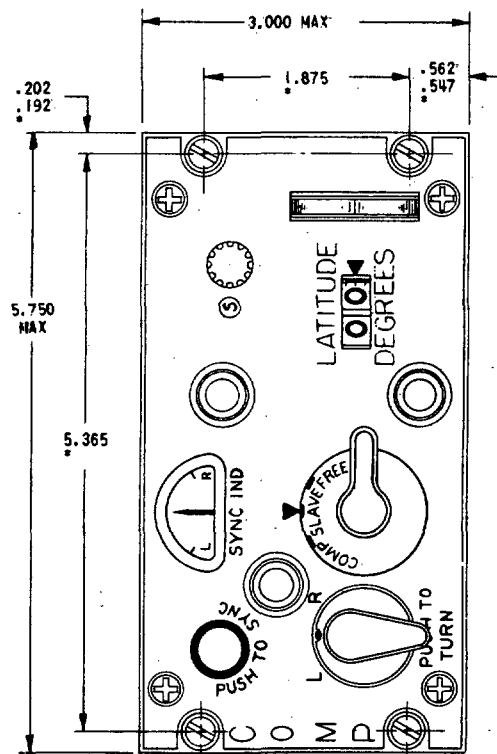
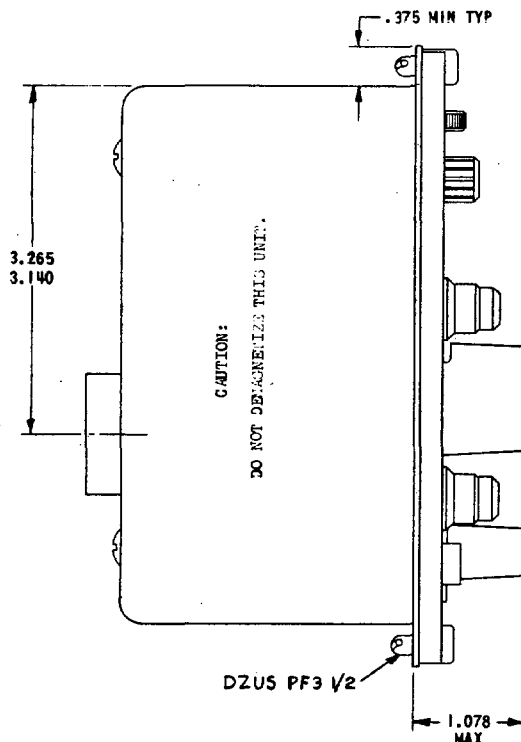


NOTICE.—When Government drawings, specifications, or other data are used for any purpose other than in connection with a definitely related Government procurement operation, the United States Government hereby incurs no responsibility, nor any obligation whatsoever, and the fact that the Government may have formulated, furnished, or in any way supplied the said drawings, specifications, or other data is not to be regarded by implication or otherwise as in any manner licensing the holder or any other person or corporation, or conveying any rights or permission to manufacture, use, or sell any patented invention that may in any way be related thereto.

FED. SUP CLASS
6615



NOTE:
INFORMATION SHOWN AS MARKING ON CASE IS MANDATORY;
LOCATION AND PRESENTATION IS OPTIONAL.

* LOCATION OF HOLES IN PANEL PER MS25212 & MS25213.

DIMENSIONS IN INCHES.
TOLERANCE ON DECIMAL DIMENSIONS SHALL
BE $\pm .005$, UNLESS OTHERWISE SPECIFIED.

THIS STANDARD TAKES PRECEDENCE OVER DOCUMENTS REFERENCED HEREIN. REFERENCED
DOCUMENTS SHALL BE OF THE ISSUE IN EFFECT ON DATE OF INVITATIONS FOR BID.

P.A. NAVY-BUMEP Other Cust	TITLE CONTROLLER, COMPASS SYSTEM C-2984/AJB-3A	MILITARY STANDARD MS17392(WEP)
PROCUREMENT SPECIFICATION MIL-C-23731(WEP)	SUPERSEDES:	SHEET OF

This standard has been approved by the Bureau of Naval Weapons (Department of the Navy) and is mandatory for use by this activity. All other military activities are required to employ this standard where suitable.