

INCH-POUND

MS17349E  
 7 March 2007  
 SUPERSEDING  
 MS17349D  
 26 October 2005

## DETAIL SPECIFICATION SHEET

## COVER, PROTECTIVE, ELECTRICAL CONNECTOR, RECEPTACLE

This specification is approved for use by all Departments  
 and Agencies of the Department of Defense

The requirements for acquiring the product described herein  
 shall consist of this specification sheet and MIL-DTL-22992.

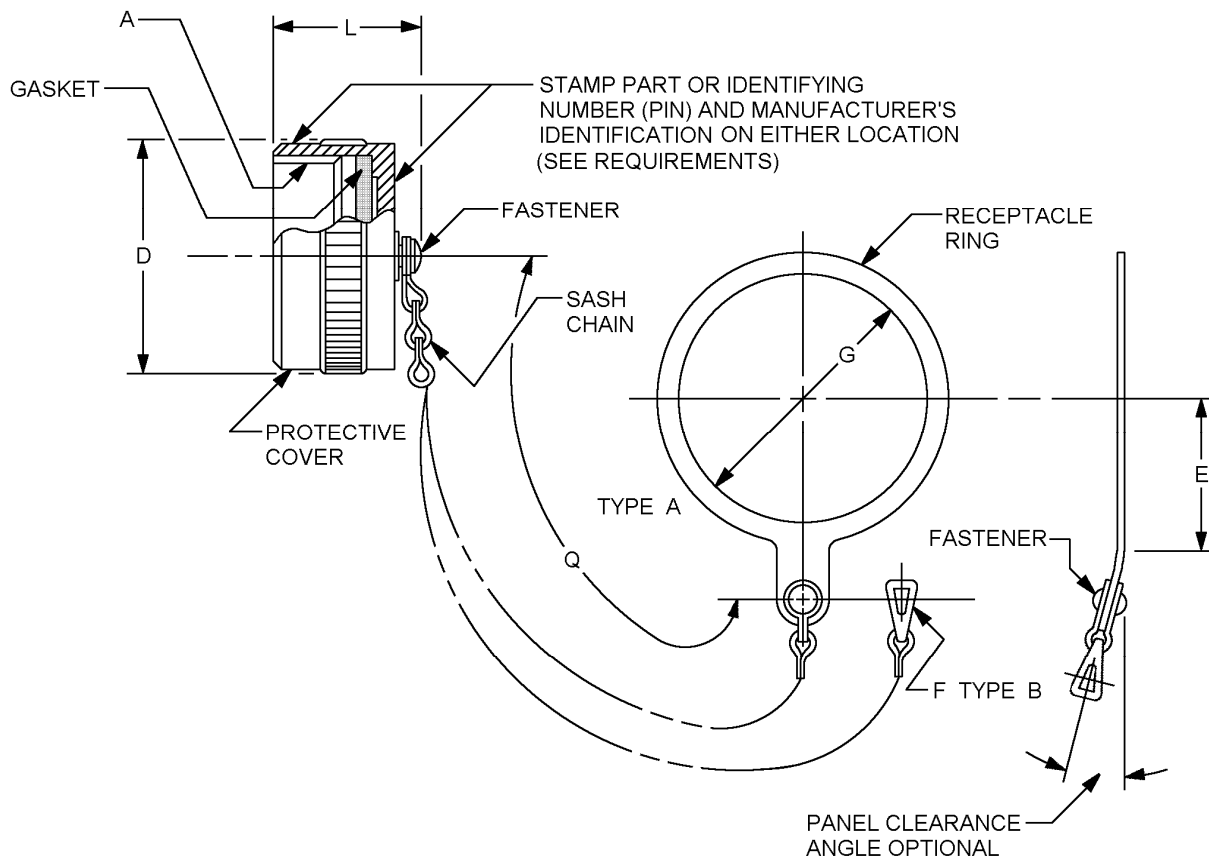


FIGURE 1. Dimensions and configuration.

## MS17349E

Size	Type	A Thread class 2B	L Max.	Q	D Max	E Min	F (see note 4)	G Min.
12	A	0.8750-0.1P-0.2L-DS	.765	5.00	1.094	.83		1.016
12	B						6	
14	A	1.0000-0.1P-0.2L-DS			1.219	.87		1.141
14	B						6	
16	A	1.1250-0.1P-0.2L-DS	1.344		.97		1.266	
16	B					6		
18	A	1.2500-0.1P-0.2L-DS	1.469		1.01		1.391	
18	B					8		
20	A	1.3750-0.1P-0.2L-DS	1.562		1.12		1.516	
20	B					8		
22	A	1.5000-0.1P-0.2L-DS	.980	6.00	1.688	1.19		1.641
22	B						8	
24	A	1.7500-0.1P-0.2L-DS			1.938	1.33		1.891
24	B						8	
28	A	2.0000-0.1P-0.2L-DS			2.219	1.48		2.141
28	B						8	
32	A	2.2500-0.1P-0.2L-DS			2.469	1.62		2.391
32	B						10	
36	A	2.5000-0.1P-0.2L-DS			2.719	1.77		2.641
36	B						10	
40	A	2.7500-0.1P-0.2L-DS		2.969	1.91		2.891	
40	B					10		
44	A	3.0000-0.1P-0.2L-DS		3.219	2.05		3.141	
44	B					10		

FIGURE 1. Dimensions and configuration - Continued.

## MS17349E

Inches	mm	Inches	mm	Inches	mm
.765	19.43	1.330	33.80	2.000	50.80
.830	21.10	1.344	34.14	2.050	52.07
.870	22.10	1.375	34.925	2.141	54.38
.875	22.225	1.391	35.33	2.219	56.36
.970	24.60	1.469	37.31	2.250	57.15
.980	24.89	1.480	37.60	2.391	60.73
1.000	25.40	1.500	38.10	2.469	62.71
1.010	25.70	1.516	38.51	2.500	63.50
1.016	25.81	1.562	39.67	2.641	67.08
1.094	27.79	1.620	41.10	2.719	69.06
1.120	28.40	1.641	41.68	2.750	69.85
1.125	28.575	1.688	42.86	2.891	73.43
1.141	28.98	1.750	44.45	2.969	75.41
1.190	30.20	1.770	45.00	3.000	76.20
1.219	30.96	1.891	48.03	3.149	79.78
1.250	31.75	1.910	48.50	3.219	81.76
1.266	32.16	1.938	49.22	5.000	127.00
				6.000	152.40

## NOTES:

1. Dimensions are in inches.
2. Metric equivalents are given for information only.
3. Unless otherwise specified tolerances are  $\pm .016$  (0.41 mm).
4. F clearance to accommodate screw size indicated.

FIGURE 1. Dimensions and configuration - Continued.

## MS17349E

## REQUIREMENTS:

Design and construction, see figure 1.

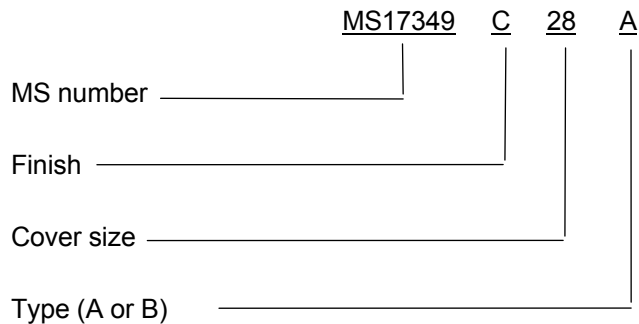
Cover type shall be designated as A or B. Type A is used for MS17345, MS17347, and MS17348, and the type B is used for MS17343 and MS17346.

Chain shall be passivated stainless steel in accordance with type II, class 3, trade number 8 as specified in RR-C-271 and shall be within one link of length specified. Chain shall move freely on protective cap after assembly.

Cover finish shall be designated by the letter C (conductive) or N (nonconductive).

Cover shall be marked with the PIN only when procured as a separate part.

PIN example:



Qualification:

Visual and mechanical examination.

Water immersion.

Salt spray (corrosion).

Tensile.

Air leakage.

Group A sampling inspection. 100% inspection is not applicable, sampling inspection shall be specified in table I:

TABLE I. Group A sampling plan.

Lot size	Sampling size
1 to 13	100 percent
14 to 150	13 units
151 to 280	20 units
281 to 500	29 units
501 to 1,200	34 units
1,201 to 3,200	42 units

## MS17349E

Changes from previous issue. Marginal notations are not used in this revision to identify changes with respect to the previous issue due to the extent of the changes.

Referenced documents. In addition to MIL-DTL-22992, this document references the following:

MS17343  
MS17345  
MS17346  
MS17347  
MS17348  
RR-C-271

## CONCLUDING MATERIAL

### Custodians:

Army – CR  
Navy – EC  
Air Force – 11  
DLA – CC

### Preparing activity:

DLA – CC

### Review activities:

Army – AR, CR4, MI  
Navy – AS, CG, MC, OS  
Air Force – 19

(Project 5935–2006–221)

NOTE: The activities listed above were interested in this document as of the date of this document. Since organizations and responsibilities can change. You should verify the currency of the information above using the ASSIST Online database at <http://assist.daps.dla.mil>.