

INCH-POUND

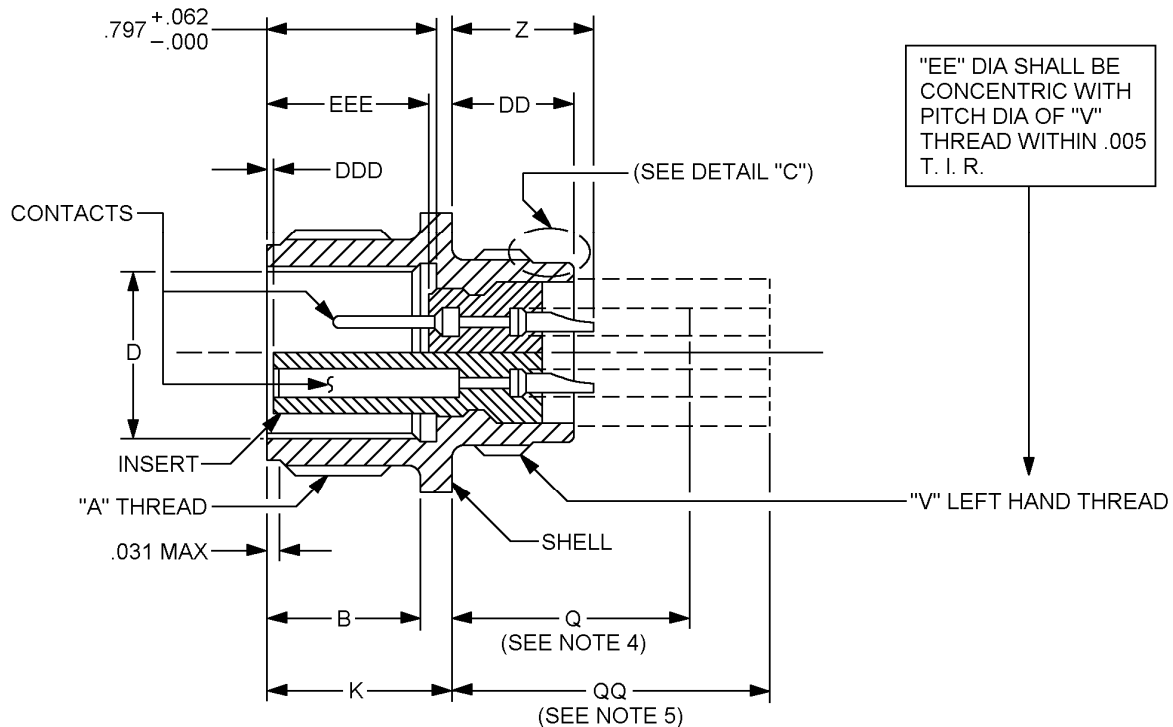
MS17345E
 26 October 2005
 SUPERSEDING
 MS17345D
 12 August 1987

DETAIL SPECIFICATION SHEET

CONNECTOR, PLUG, ELECTRICAL, CABLE CONNECTING, FEMALE

This specification is approved for use by all Departments
 and Agencies of the Department of Defense

The requirements for acquiring the product described herein
 shall consist of this specification sheet and MIL-DTL-22992.

FIGURE 1. Dimensions and configuration.

MS17345E

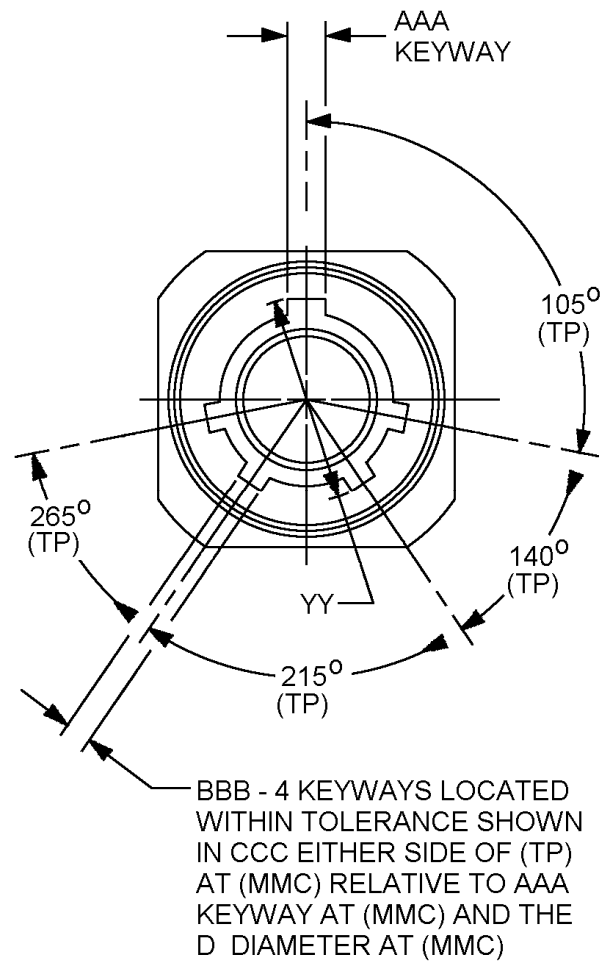


FIGURE 1. Dimensions and configuration - Continued.

MS17345E

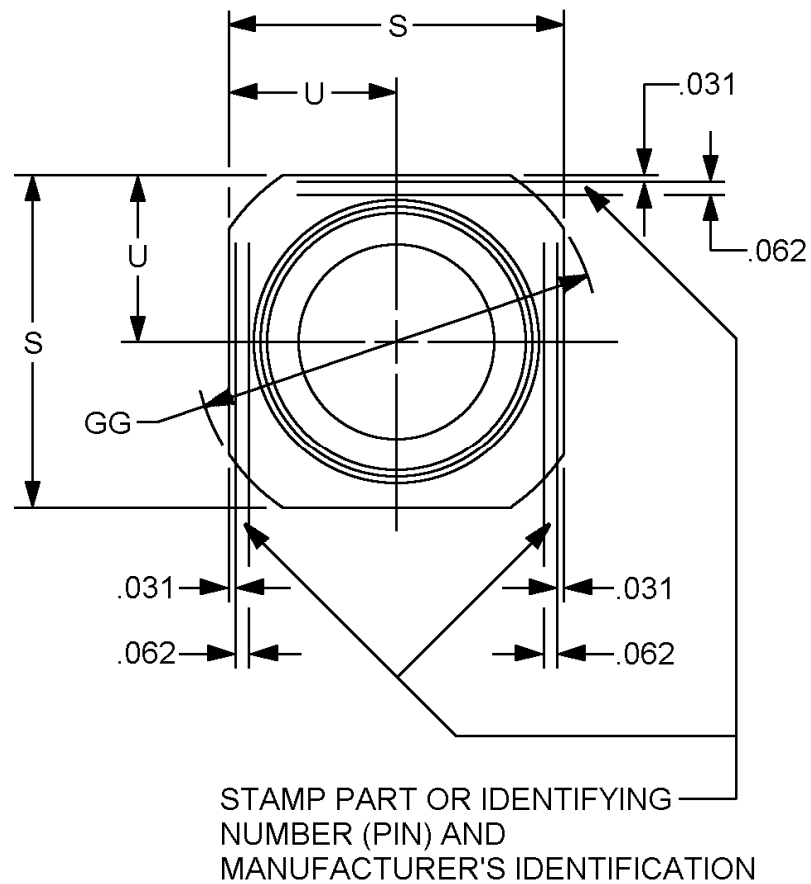
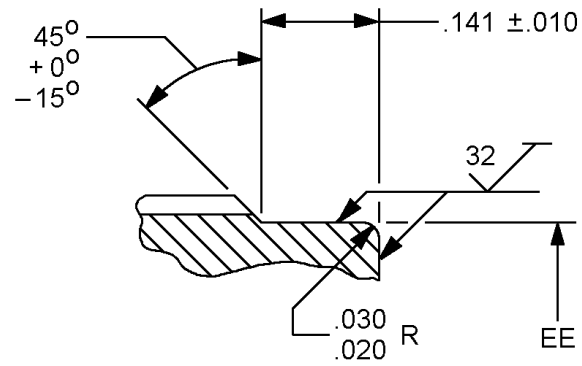


FIGURE 1. Dimensions and configuration - Continued.

MS17345E



DETAIL "C"

Size	A Thread (plated) class 2A	B + .016 - .000	D Dia + .005 - .010	K + .021 - .020
12	0.8750-0.1P-0.2L-DS	.688	.567	.938
14	1.0000-0.1P-0.2L-DS		.692	
16	1.1250-0.1P-0.2L-DS		.817	
18	1.2500-0.1P-0.2L-DS	.703	.942	.953
20	1.3750-0.1P-0.2L-DS		1.068	
22	1.5000-0.1P-0.2L-DS		1.192	
24	1.7500-0.1P-0.2L-DS	.766	1.016	.977
28	2.0000-0.1P-0.2L-DS		1.536	1.016
32	2.2500-0.1P-0.2L-DS	.703	1.786	1.078
36	2.5000-0.1P-0.2L-DS		2.005	
40	2.7500-0.1P-0.2L-DS		2.255	
44	3.0000-0.1P-0.2L-DS		2.545	

FIGURE 1. Dimensions and configuration - Continued.

MS17345E

Size	Q Max.	QQ Max.	S + .021 - .020	U ± .010	V Thread (plated) class 2A LH
12	1.055	--	1.000	.500	.7500-20 UNEF
14		1.605	1.094	.547	.8750-20 UNEF
16			1.281	.641	1.0000-20 UNEF
18	1.040	1.590	1.375	.688	1.1250-18 NEF
20			1.500	.750	1.2500-18 NEF
22			1.625	.812	1.3750-18 NEF
24	1.527	1.875	1.875	.938	1.6250-18 NEF
28	.977	1.527	2.125	1.062	1.8750-16 UN
32	.915	1.465	2.375	1.188	2.0625-16 N
36			2.625	1.312	2.3125-16 N
40			3.000	1.500	2.6250-16 UN
44	NA	NA	3.250	1.625	2.8750-16 UN

FIGURE 1. Dimensions and configuration - Continued.

MS17345E

Size	DD ± .010	EE dia + .001 - .007	GG dia.	YY dia + .010 - .006	AAA	BBB
12	.641	.672	1.250	.647	.126 -.001, +.007	.063 -.001, +.007
14		.797	1.375	.772		
16		.922	1.500	.897		
18	.625	1.040	1.625	1.022	.182 -.001, +.010	.108 -.001, +.010
20		1.164	1.750	1.148		
22		1.289	1.875	1.272		
24		1.539	2.125	1.473		
28	.563	1.780	2.37	1.692	.260 -.001, +.010	.155 -.001, +.010
32		1.967	2.625	1.942		
36		2.217	2.875	2.161		
40	.703	2.530	3.125	2.411		
44		2.780	3.500	2.692		

FIGURE 1. Dimensions and configuration - Continued.

MS17345E

Size	CCC	DDD Socket insert location ± .030	EEE Pin insert location ± .030	Z max	Z min (size D only)
12	.0035	.020	.729	.726	NA
14					
16	.007			.711	.780
18					
20				.648	.717
22					
24				.576	.655
28					
32				.797	
36					
40					
44		.039	.764	.797	

FIGURE 1. Dimensions and configuration - Continued.

MS17345E

Inches	mm	Inches	mm	Inches	mm	Inches	mm
.001	0.03	.686	17.34	1.068	27.13	1.786	45.36
.0035	0.09	.688	17.48	1.078	27.97	1.875	47.63
.005	0.13	.692	17.58	1.094	28.78	1.942	49.33
.006	0.15	.703	17.86	1.125	28.58	1.967	49.96
.007	0.18	.711	18.06	1.148	29.16	2.000	50.80
.010	0.25	.717	18.21	1.164	29.60	2.005	50.93
.016	0.41	.726	14.44	1.188	30.18	2.0625	52.60
.020	0.51	.729	18.52	1.192	30.28	2.125	53.98
.021	0.53	.750	19.05	1.250	31.75	2.161	54.89
.030	0.76	.750	19.05	1.272	32.31	2.217	56.31
.031	0.79	.764	19.41	1.281	32.54	2.250	57.15
.039	0.99	.766	19.46	1.289	33.74	2.255	57.28
.062	1.57	.772	19.61	1.312	33.32	2.3125	58.737
.063	1.60	.780	19.81	1.317	33.45	2.375	60.33
.108	2.74	.797	20.24	1.375	34.925	2.411	61.24
.126	3.20	.812	20.62	1.375	34.93	2.500	63.50
.141	3.58	.817	20.75	1.465	37.21	2.530	64.26
.155	3.94	.875	22.23	1.473	37.41	2.545	64.64
.182	4.62	.897	22.78	1.500	38.10	2.625	66.70
.260	6.60	.915	23.24	1.527	38.79	2.692	68.38
.500	12.70	.922	23.42	1.536	39.01	2.750	69.85
.547	13.89	.938	23.82	1.539	39.09	2.764	70.21
.563	14.30	.942	23.93	1.590	40.39	2.780	70.61
.567	14.40	.953	24.21	1.605	40.77	2.875	73.03
.576	14.63	.977	24.82	1.625	41.28	3.000	76.20
.622	15.80	1.000	25.40	1.692	42.98	3.125	79.38
.625	15.86	1.016	25.81	1.750	44.45	3.250	82.55
.641	16.28	1.022	25.96	1.780	45.21	3.500	88.90
.647	16.43	1.040	24.41				
.648	16.45	1.055	26.80				
.655	16.64	1.062	26.97				
.672	17.06						

NOTES:

1. All dimensions are in inches.
2. Unless otherwise specified tolerances are $\pm .016$ inch (0.41 mm).
3. Metric equivalents are given for information only.
4. Maximum termination of grommet extension for sizes 12 and 16 contacts for class J.
5. Maximum termination of grommet extension for sizes 0, 4 and 8 contacts for class J.
6. For protective cover, see MS17349, type A.

FIGURE 1. Dimensions and configuration - Continued.

MS17345E

REQUIREMENTS:

Design and construction, see figure 1.

Mates with plug MS17344.

Dimensions shall be maintained when inserts are pressed firmly against indicated shoulder.

For size 0 contacts only, increase X dimension by .312 (7.92 mm) for shell sizes 12 through 40 and by .062 (1.57 mm) for shell size 44.

For size, insert arrangement, alternate position, contact size, spacing and service rating, see MIL-STD-1651.

Shell finish shall be designated by the letter C (conductive) or N (nonconductive).

PIN example:

	<u>MS17345</u>	<u>R</u>	<u>20</u>	<u>C</u>	<u>27</u>	<u>P</u>	<u>W</u>
MS number							
Class							
Shell size							
Finish							
Insert arrangement							
Contact style							
Alternate position							

Changes from previous issue. Marginal notations are not used in this revision to identify changes with respect to the previous issue due to the extent of the changes.

Referenced documents. In addition to MIL-DTL-22992, this document references the following:

MS17344

MS17349

MIL-STD-1651

MS17345E

CONCLUDING MATERIAL

Custodians:

Army – CR
Navy – EC
Air Force – 11
DLA – CC

Preparing activity:

DLA – CC

Review activities:

Army – AR, MI
Navy – AS, CG, MC, OS, YD
Air Force – 19

(Project 5935–4719–007)

NOTE: The activities listed above were interested in this document as of the date of this document. Since organizations and responsibilities can change, you should verify the currency of the information above using the ASSIST Online database at <http://assist.daps.dla.mil>.