

INCH-POUND

MS17343F
 26 October 2005
 SUPERSEDING
 MS17343E
 18 April 1994

DETAIL SPECIFICATION SHEET

CONNECTOR, RECEPTACLE, ELECTRICAL, WALL MOUNTING

This specification is approved for use by all Departments
 and Agencies of the Department of Defense

The requirements for acquiring the product described herein
 shall consist of this specification sheet and MIL-DTL-22992.

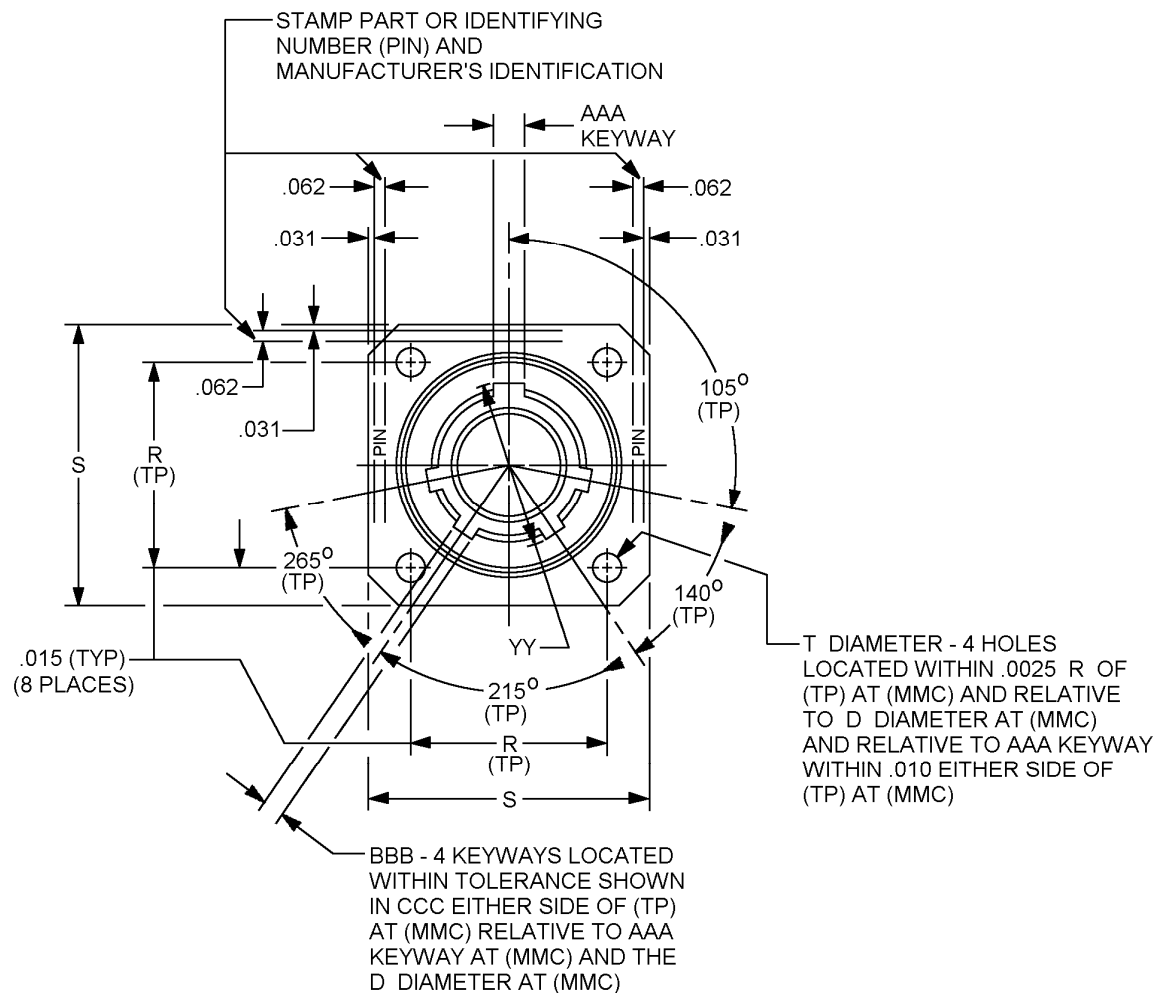
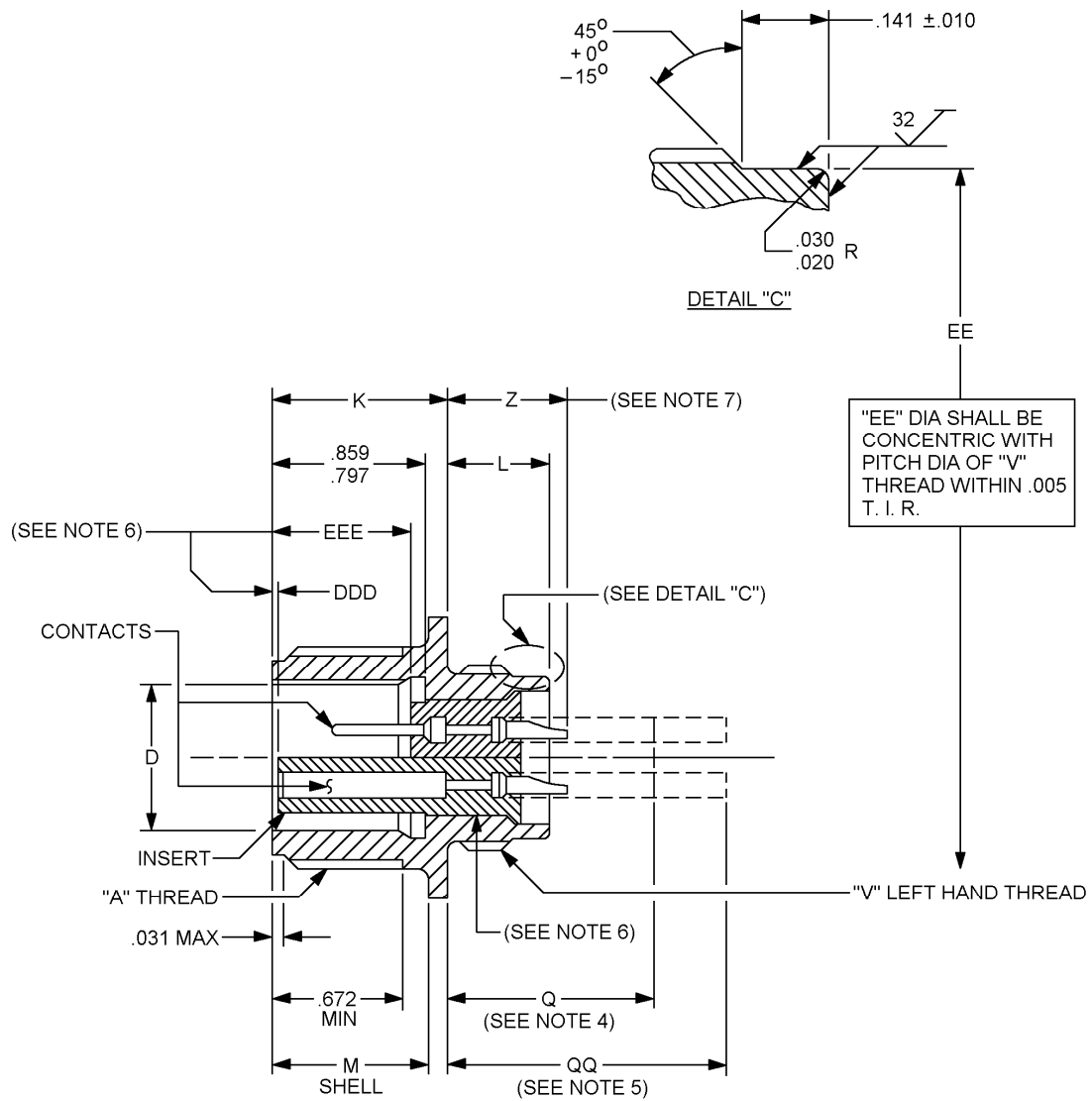


FIGURE 1. Dimensions and configuration.

MS17343F

FIGURE 1. Dimensions and configuration - Continued.

MS17343F

Size	A Thread (plated) class 2A	D Dia + .005 - .010	K + .005 - .020	L ± .020
12	0.8750-0.1P-0.2L-DS	.567	.938	.640
14	1.0000-0.1P-0.2L-DS	.692	.938	.640
16	1.1250-0.1P-0.2L-DS	.817	.938	.640
18	1.2500-0.1P-0.2L-DS	.942	.953	.625
20	1.3750-0.1P-0.2L-DS	1.068	.953	.625
22	1.5000-0.1P-0.2L-DS	1.192	.953	.625
24	1.7500-0.1P-0.2L-DS	1.317	1.047	.594
28	2.0000-0.1P-0.2L-DS	1.536	1.047	.594
32	2.2500-0.1P-0.2L-DS	1.786	1.111	.530
36	2.5000-0.1P-0.2L-DS	2.005	1.111	.530
40	2.7500-0.1P-0.2L-DS	2.255	1.111	.703
44	3.0000-0.1P-0.2L-DS	2.545	1.109	.703

Size	M + .010 - .000	Q Max	QQ Max	R (TP)	S + .021 - .020	T ± .005
12	.797	1.040	---	.906	1.188	.150
14	.797	1.040	1.590	.969	1.281	.150
16	.797	1.040	1.590	1.062	1.375	.150
18	.797	1.025	1.575	1.156	1.500	.177
20	.797	1.025	1.575	1.250	1.625	.177
22	.797	1.025	1.575	1.375	1.750	.177
24	.859	.931	1.481	1.562	2.000	.177
28	.859	.931	1.481	1.750	2.250	.177
32	.922	.867	1.417	1.938	2.500	.209
36	.922	.867	1.417	2.188	2.750	.209
40	.922	.867	1.417	2.375	3.000	.209
44	.922	NA	NA	2.625	3.250	.209

FIGURE 1. Dimensions and configuration - Continued.

MS17343F

Size	V Thread (plated) class 2A LH	EE Dia +.001 -.007	YY Dia. +.010 -.006	AAA	BBB
12	.750-20 UNEF	.672	.647	.126 -.001, +.007	.063 -.001, +.007
14	.8750-20 UNEF	.797	.772		
16	1.0000-20 UNEF	.922	.897	.182 -.001, +.010	.108 -.001, +.010
18	1.1250-18 NEF	1.040	1.022		
20	1.2500-18 NEF	1.164	1.148		
22	1.3750-18 NEF	1.289	1.272		
24	1.6250-18 NEF	1.539	1.473	.260 -.001, +.010	.155 -.001, +.010
28	1.8750-16 UN	1.780	1.692		
32	2.0625-16 N	1.967	1.942		
36	2.3125-16 N	2.217	2.161		
40	2.6250-16 UN	2.530	2.411		
44	2.8750-16 UN	2.780	2.692		

FIGURE 1. Dimensions and configuration - Continued.

MS17343F

Size	CCC	DDD Socket insert location ± .030	EEE Pin insert location ± .030	Z max (see note 7)	Z min (size D only)
12	.0035	.020	.729	.726	NA
14					
16	.007			.711	.780
18					
20					
22				.617	.686
24					
28					
32				.553	.622
36					
40					
44		.039	.744	.797	

FIGURE 1. Dimensions and configuration - Continued.

MS17343F

Inches	mm	Inches	mm	Inches	mm	Inches	mm	Inches	mm
.001	0.03	.622	15.80	.969	24.61	1.500	38.10	2.3125	58.74
.0035	0.089	.625	15.86	1.000	25.40	1.536	39.01	2.375	60.33
.005	0.13	.640	16.26	1.022	25.96	1.539	39.09	2.411	61.24
.006	0.15	.647	16.43	1.025	25.96	1.562	39.67	2.375	60.33
.007	0.18	.672	17.07	1.040	25.42	1.575	40.01	2.411	60.24
.010	0.25	.686	17.34	1.047	26.59	1.590	40.39	2.500	63.50
.020	0.51	.692	17.58	1.062	26.97	1.625	41.28	2.530	64.25
.021	0.53	.703	17.86	1.068	27.13	1.692	42.98	2.625	66.68
.030	0.76	.711	18.06	1.109	28.17	1.750	44.45	2.692	68.38
.031	0.79	.726	18.44	1.111	28.22	1.786	45.36	2.750	69.85
.039	0.99	.729	18.52	1.125	28.60	1.875	47.62	2.780	70.61
.062	1.57	.750	19.05	1.148	29.16	1.938	49.23	2.8750	73.020
.063	1.60	.764	19.40	1.156	29.36	1.942	49.33	3.000	76.20
.108	2.74	.772	19.61	1.164	29.57	1.967	49.96	3.125	79.38
.126	3.20	.780	19.81	1.188	30.18	2.000	50.80	3.250	82.55
.141	3.58	.797	20.24	1.192	31.28	2.005	50.93		
.150	3.81	.817	20.75	1.250	31.75	2.0625	52.40		
.155	3.94	.859	21.82	1.272	32.31	2.161	54.89		
.177	4.50	.867	22.02	1.281	32.54	2.1885	55.60		
.182	4.62	.875	22.22	1.289	32.74	2.217	56.31		
.209	5.31	.897	22.78	1.317	33.45	2.250	57.15		
.260	6.60	.906	23.01	1.375	34.92	2.255	57.28		
.530	13.46	.922	23.42	1.375	34.93				
.553	14.06	.932	23.65	1.417	35.99				
.567	14.40	.938	23.65	1.473	37.41				
.594	15.09	.942	23.93	1.481	37.62				
.617	15.67	.953	24.21						

NOTES:

1. All dimensions are in inches.
2. Unless otherwise specified tolerances are $\pm .016$ inch (0.41 mm).
3. Metric equivalents are given for information only.
4. Maximum termination of grommet extension for sizes 12 and 16 contacts for class J.
5. Maximum termination of grommet extension for sizes 0, 4, and 8 contacts for class J.
6. Dimensions shall be maintained when inserts are pressed firmly against indicated shoulder.
7. For size 0 contacts only, increase Z dimension by .312 inch (7.92 mm) for shell sizes 12 through 40 and by .062 inch (1.57 mm) for shell size 44.

FIGURE 1. Dimensions and configuration - Continued.

MS17343F

REQUIREMENTS:

Design and construction, see figure 1.

Mates with plugs shown on MS17344 and covers shown on MS17349.

Class shall be designated by the letter C (pressurized), J (pressurized with grommet) or R (environmental resisting).

For shell size, insert arrangement, alternate position, contact size, spacing and service rating, see MIL-STD-1651.

Shell finish shall be designated by the letter C (conductive) or N (nonconductive).

PIN example:

	<u>MS17343</u>	<u>R</u>	<u>20</u>	<u>C</u>	<u>27</u>	<u>P</u>	<u>W</u>
MS number							
Class							
Shell size							
Finish							
Insert arrangement							
Contact style							
Alternate position							

Changes from previous issue. Marginal notations are not used in this revision to identify changes with respect to the previous issue due to the extent of the changes.

Referenced documents. In addition to MIL-DTL-22992, this document references the following:

MS17344
MS17349
MIL-STD-1651

MS17343F

CONCLUDING MATERIAL

Custodians:

Army – CR
Navy – EC
Air Force – 11
DLA – CC

Preparing activity:

DLA – CC

Review activities:

Army – AR, MI
Navy – AS, CG, MC, OS, SH, YD
Air Force – 19, 99
NASA – NA

(Project 5935–4719–005)

NOTE: The activities listed above were interested in this document as of the date of this document. Since organizations and responsibilities can change, you should verify the currency of the information above using the ASSIST Online database at <http://assist.daps.dla.mil>.