

INCH-POUND
 NS17343E
 18 April 1994
 SUPERSEDING
 NS17343D
 12 August 1987

MILITARY SPECIFICATION SHEET

CONNECTOR, RECEPTACLE,
ELECTRICAL, WALL MOUNTING

This specification is approved for use by all Departments and Agencies of the Department of Defense.

The requirements for acquiring the product described herein shall consist of this specification sheet and the issue of the following specification listed in that issue of the Department of Defense Index of Specifications and Standards (DODISS) specified in the solicitation: MIL-C-22992.

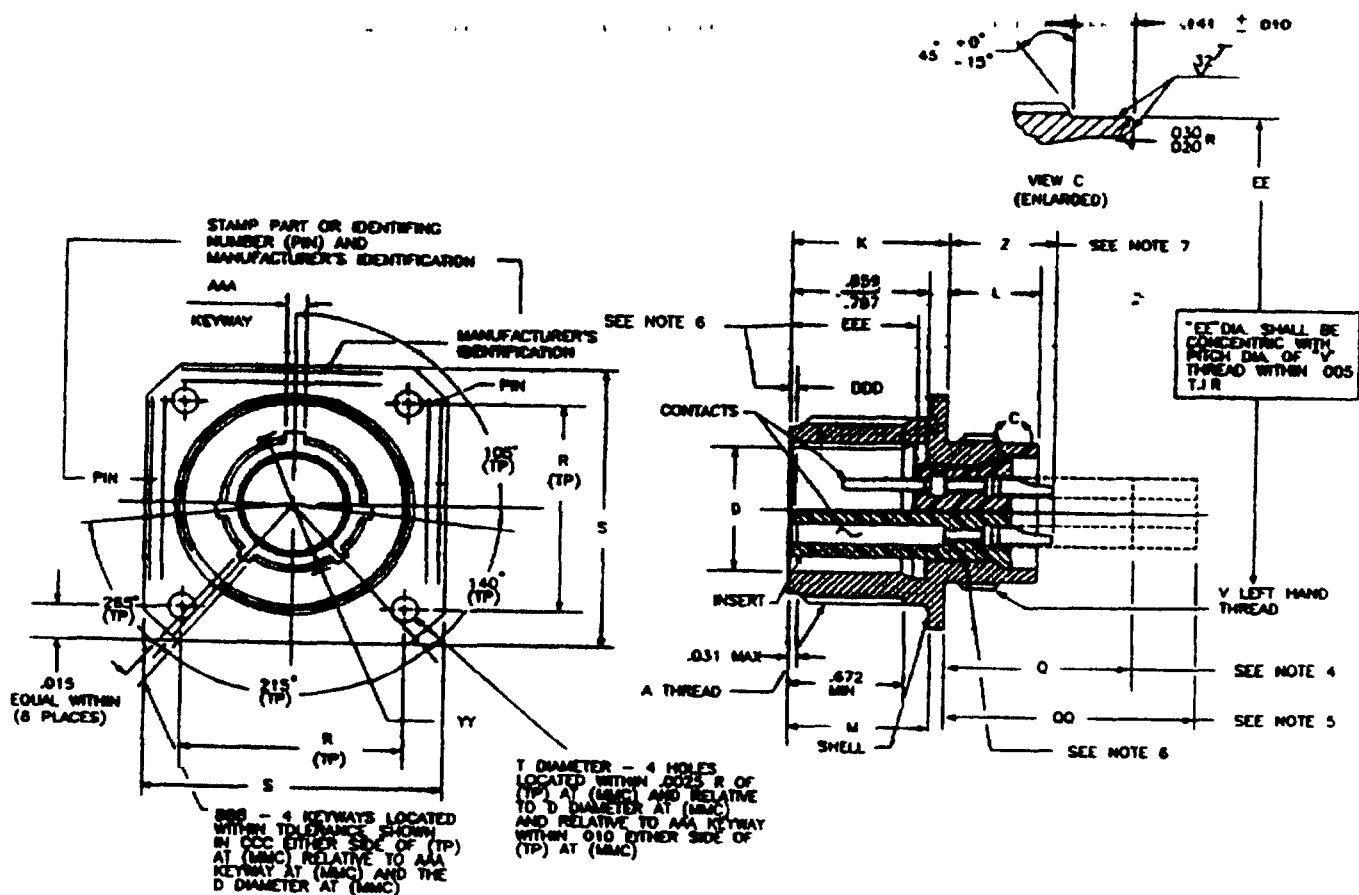


FIGURE 1. Dimensions and configuration.

NS17343E

Size	A Thread (plated) class 2A	D Dia +.005 -.010	K +.021 -.020	L ±.02 0	H +.010 -.000	Q MAX	QQ Max	R (TP)	S +.021 -.020	T ±.005
12	0.8750-0.1P-0.2L-0S	.567	.938	.640	.797	1.040	---	.906	1.188	.150
14	1.0000-0.1P-0.2L-0S	.692	.938	.640	.797	1.040	1.990	.969	1.281	.150
16	1.1250-0.1P-0.2L-0S	.817	.938	.640	.797	1.040	1.590	1.062	1.375	.150
18	1.2500-0.1P-0.2L-0S	.942	.953	.625	.797	1.025	1.575	1.156	1.500	.177
20	1.3750-0.1P-0.2L-0S	1.068	.953	.625	.797	1.025	1.575	1.250	1.625	.177
22	1.5000-0.1P-0.2L-0S	1.192	.953	.625	.797	1.025	1.575	1.375	1.750	.177
24	1.7500-0.1P-0.2L-0S	1.317	1.047	.594	.859	.931	1.481	1.562	2.000	.177
28	2.0000-0.1P-0.2L-0S	1.536	1.047	.594	.859	.931	1.481	1.750	2.250	.177
32	2.2500-0.1P-0.2L-0S	1.786	1.111	.530	.922	.867	1.417	1.938	2.500	.209
36	2.5000-0.1P-0.2L-0S	2.005	1.111	.530	.922	.867	1.417	2.188	2.750	.209
40	2.7500-0.1P-0.2L-0S	2.255	1.111	.703	.922	.867	1.417	2.375	3.000	.209
44	3.0000-0.1P-0.2L-0S	2.545	1.109	.703	.922	NA	NA	2.625	3.250	.209

FIGURE 1. Dimensions and configurations - Continued

NS17343E

Size	V Thread (plated) class 2A LH	EE Dia +.001 -.007	YY Dia +.010 -.006	AAA	BBB	CCC	DDO socket insert lctn ±.030	EEE pin insert lctn ±.030	Z max (see note 7)	Z min (size 0 only)
12	.7500-20 UNEF	.672	.647	+ .007 .126 - .001	+ .007 .063 - .001	.0035	.020	.729	.726	NA
14	.8750-20 UNEF	.797	.772	+ .007 .126 - .001	+ .007 .063 - .001	.0035	.020	.729	.726	NA
16	1.0000-20 UNEF	.922	.897	+ .010 .182 - .001	+ .010 .108 - .001	.007	.020	.729	.726	NA
18	1.1250-18 NEF	1.040	1.022	+ .010 .182 - .001	+ .010 .108 - .001	.007	.020	.729	.711	NA
20	1.2500-18 NEF	1.164	1.148	+ .010 .182 - .001	+ .010 .108 - .001	.007	.020	.729	.711	.780
22	1.3750-18 NEF	1.289	1.272	+ .010 .182 - .001	+ .010 .108 - .001	.007	.020	.729	.711	.780
24	1.6250-18 NEF	1.539	1.473	+ .010 .260 - .001	+ .010 .155 - .001	.007	.020	.729	.617	.686
28	1.8750-16 UN	1.780	1.692	+ .010 .260 - .001	+ .010 .155 - .001	.007	.020	.729	.617	.686
32	2.0625-16 N	1.967	1.942	+ .010 .260 - .001	+ .010 .155 - .001	.007	.020	.729	.553	.622
36	2.3125-16 N	2.217	2.161	+ .010 .260 - .001	+ .010 .155 - .001	.007	.020	.729	.553	.622
40	2.6250-16 UN	2.530	2.411	+ .010 .260 - .001	+ .010 .155 - .001	.007	.020	.729	.553	.622
44	2.8750-16 UN	2.780	2.692	+ .010 .260 - .001	+ .010 .155 - .001	.007	.039	.764	.797	.622

FIGURE 1. Dimensions and configurations - Continued.

MS17343E

Inches	mm	Inches	mm	Inches	mm	Inches	mm	Inches	mm
.001	0.03	.622	15.80	.969	24.61	1.5000	38.100	2.3125	58.738
.0035	0.089	.625	15.86	1.000	25.400	1.500	38.105	2.375	60.33
.005	0.13	.640	16.26	1.022	25.96	1.536	39.01	2.411	61.24
.006	0.15	.647	16.43	1.025	25.958	1.539	39.09	2.375	60.33
.007	0.18	.672	17.07	1.040	25.42	1.562	39.67	2.411	60.24
.010	0.25	.686	17.34	1.047	26.59	1.575	40.01	2.5000	63.500
.020	0.51	.692	17.58	1.062	26.97	1.5900	40.39	2.500	63.50
.021	0.53	.703	17.86	1.068	27.13	1.6250	41.275	2.530	64.25
.030	0.76	.711	18.06	1.109	28.17	1.625	41.28	2.6250	66.675
.031	0.79	.726	18.44	1.111	28.22	1.692	42.98	2.625	66.68
.039	0.99	.729	18.52	1.1250	28.575	1.7500	44.45	2.692	68.38
.062	1.57	.7500	19.050	1.148	29.16	1.750	44.45	2.7500	69.850
.063	1.60	.764	19.40	1.156	29.36	1.786	45.36	2.750	69.85
.108	2.74	.772	19.61	1.164	29.57	1.8750	47.625	2.780	70.61
.126	3.20	.780	19.81	1.188	30.18	1.938	49.23	2.8750	73.020
.141	3.58	.797	20.24	1.192	31.28	1.942	49.33	3.0000	76.200
.150	3.81	.817	20.75	1.2500	31.750	1.967	49.96	3.000	76.20
.155	3.94	.839	21.82	1.250	31.75	2.0000	50.800	3.125	79.38
.177	4.50	.867	22.02	1.272	32.31	2.000	50.80	3.250	82.55
.182	4.62	.8750	22.225	1.281	32.54	2.005	50.93		
.209	5.31	.897	22.78	1.289	32.74	2.0625	52.388		
.260	6.60	.906	23.01	1.317	33.45	2.161	54.89		
.530	13.46	.922	23.42	1.3750	34.925	2.1885	55.58		
.553	14.06	.932	23.65	1.375	34.93	2.217	56.31		
.567	14.40	.938	23.65	1.417	35.99	2.2500	57.150		
.594	15.09	.942	23.93	1.473	37.41	2.250	57.15		
.617	15.67	.953	24.21	1.481	37.62	2.255	57.28		

NOTES:

- All dimensions are in inches.
- Unless otherwise specified tolerances are ± 0.016 inch (0.41 mm).
- Metric equivalents are given for information only.
- Maximum termination of grommet extension for sizes 12 and 16 contacts for class J.
- Maximum termination of grommet extension for sizes 0, 4 and 8 contacts for class J.
- Dimensions shall be maintained when inserts are pressed firmly against indicated shoulder.
- For size 0 contacts only, increase Z dimension by .312 inch (7.92 mm) for shell sizes 12 through 40 and by .062 inch (1.57 mm) for shell size 44.

REQUIREMENTS:

Mates with plugs shown on MS17344 and covers shown on MS17349

Part or Identifying Number (PIN) example:

<u>MS17343</u>	<u>R</u>	<u>20</u>	<u>C</u>	<u>27</u>	<u>P</u>	<u>M</u>
MS number	Class	Size	Finish	Insert arrangement number	Style (P or S)	Alternate position

Class shall be designated by the letter C (pressurized), J (pressurized with grommet) or R (environmental resisting).

For shell size, insert arrangement, alternate position, contact size, spacing and service rating, see MIL-STD-1651.

Shell finish shall be designated by the letter C (conductive) or N (nonconductive).

NS17343E

Qualification.

GPL evaluating activity: Defense Electronics Supply center, (DESC-E), Dayton, OH 45444-5270.

Revision letters are not used to denote changes due to the extensiveness of the changes.

CONCLUDING MATERIAL

Custodians:

Army - CR
Navy - EC
Air Force - 85
NASA - NA

Preparing activity:
DLA - ES

Review activities:

Army - AR, MI
Navy - AS, YD
Air Force - 99

(Project 5935-3938)

User activities:

Navy - CG, MC, OS, SH
Air Force - 19