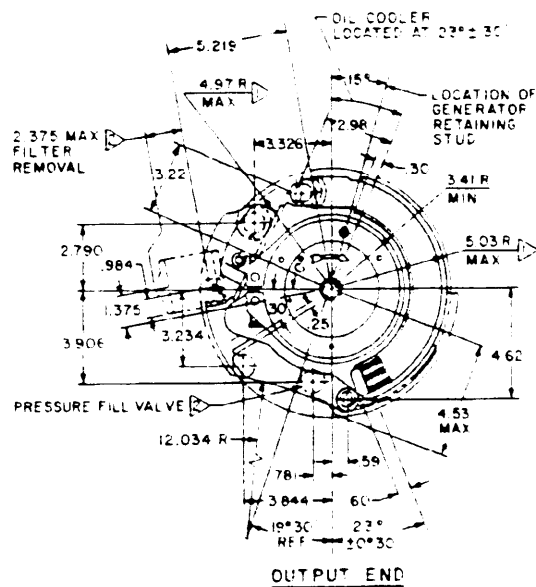
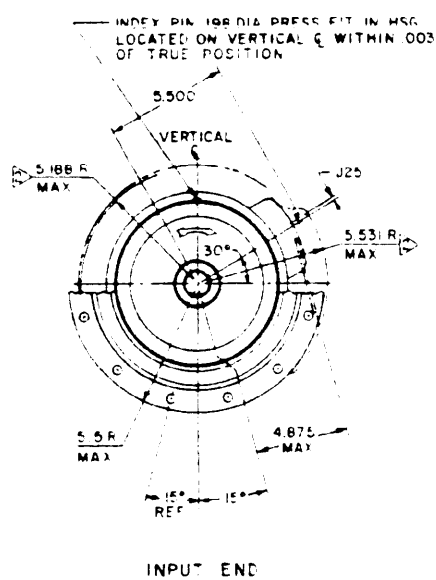
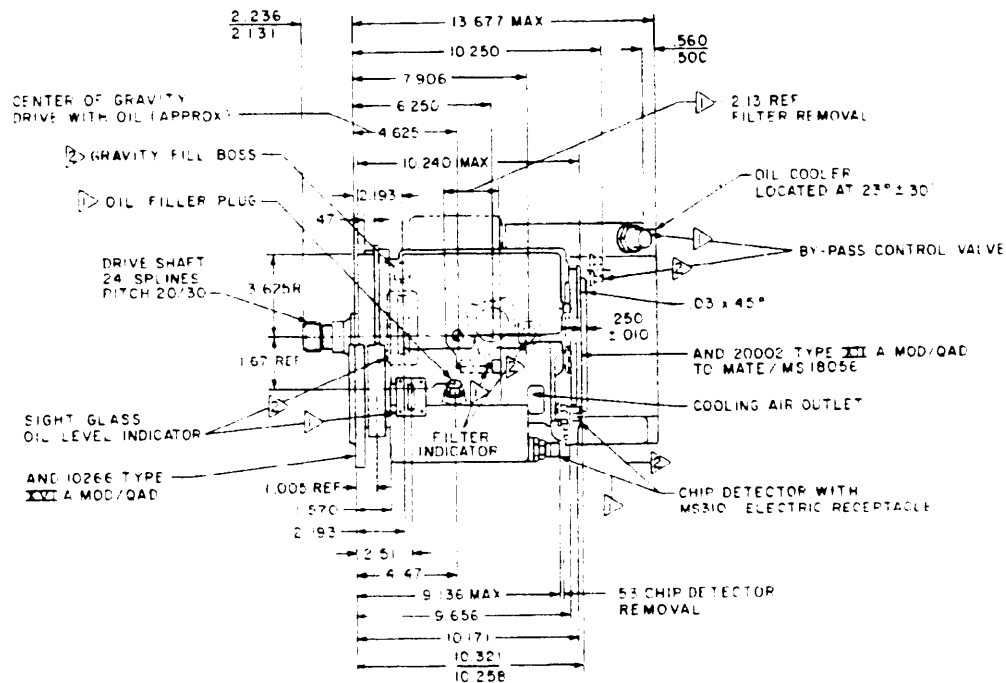


FED. SUP CLASS
6115



MS17333 - 1 ONLY

MS17333-2 ONLY

IDENTIFICATION OF ITEMS	
ITEM	MS PART NUMBER
17 HP TRANSMISSION	MS17333-1
217 HP TRANSMISSION	MS17333-2

(D) ENTIRE STANDARD REVISED AND REDRAWN

P.A. NAVY - AS
Other Const

TITLE

TRANSMISSION, POWER, CONSTANT
SPEED, 17 HP AND 21.7 HP

MILITARY STANDARD

MS17333(AS)

PROCUREMENT SPECIFICATION
MIL-T-7101

SUPERSEDES

SHEET	OF	2
-------	----	---

DD FORM 672-1 (Limited coordination)
MAR 72

PREVIOUS EDITIONS OF THIS FORM ARE OBSOLETE

PLATE NO. 23071
Project No. 6115-N450

This military standard is approved by NAVAL AIR SYSTEMS COMMAND. Department of the Navy and shall be used by what activity all other military activities are required to employ this standard where suitable

APPROVED 20 NOV 1967 REVISED (D) 10 JAN 1980

FED. SUP CLASS
6115

TRANSMISSION DATA

POLAR MOMENT OF INERTIA (DRIVER GENERATOR) - WT² LE-FT²-IN²
 EFFICIENCY OVER RATED INPUT SPEED RANGE @ RATED POWER, MIN
 AUDIO NOISE, MAX, ABOVE 90 DB LEVEL, DB
 DIRECTION OF ROTATION-INPUT FLANGE AND OUTPUT PAD
 WEIGHT, TOTAL SYSTEM (INCLUDING FLUID), MAX, LBS
 OF MOMENT, TOTAL SYSTEM, MAX, INCH-LBS
 INPUT SHAFT SHEAR VALUE, MAX, INCH-LBS, MIN TO MAX
 ACCELERATION AND DECELERATION RATE, MIN, RPM/SEC, CAPABILITY
 OPERATING TEMPERATURE-CONTINUOUS AMBIENT, °F
 OVERSPEED OUTPUT TRANSIENT, 1-5 SECONDS, MAX, RPM
 OVERSPEED INPUT TRANSIENT, 1 MINUTES, MIN, RPM

18
 SEE FIGURE 1
 CLOCKWISE
 45
 130
 1350 TO 2750
 2400 ACCELERATION
 3000 DECELERATION
 -6° TO 30°
 10,000
 11,000

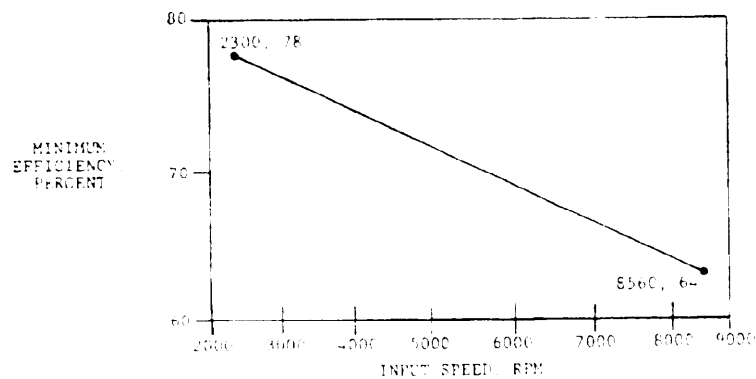


FIGURE 1. EFFICIENCY OVER RATED INPUT SPEED RANGE

REQUIREMENTS

1. EACH TRANSMISSION SHALL INCLUDE A QUICK-ATTACH-DETACH MOUNTING DEVICE WHICH SHALL BE USABLE FOR MOUNTING THE TRANSMISSION ON THE MOUNTING PAD CALLED OUT ON PAGE 1, AND THE TRANSMISSION SHALL BE MOUNTED ON SUCH A PAD BY MEANS OF THE Q.A.D. MOUNTING DEVICE FOR ALL TESTS OF THE SPECIFICATION WHICH REQUIRE THAT THE TRANSMISSION BE MOUNTED.
2. TWELVE MS 90415-6 NUTS SHALL BE PACKED WITH EACH TRANSMISSION AT THE TIME OF DELIVERY. THE PACKAGING OF THESE NUTS AND THE ATTACHMENT OF THIS PACKAGE TO THE TRANSMISSION IS SUBJECT TO THE APPROVAL OF THE QUALIFYING ACTIVITY.

U.S. GOVERNMENT PRINTING OFFICE: 1980 — 603-121/707

P.A. NAVY - AS Other Cost	TITLE TRANSMISSION, POWER, CONSTANT SPEED, 17 HP AND 21.7 HP	MILITARY STANDARD	
		MS17333(AS)	
PROCUREMENT SPECIFICATION MIL-T-7101	SUPERSEDES	SHEET 2	OF 2

DD FORM 672-1 (Limited coordination)
1 MAR 72

PREVIOUS EDITIONS OF THIS FORM ARE OBSOLETE

PLATE NO. 23011

APPROVED 20 NOV 1967 REVISED 15 OCT 1965 FOR CHANGES SEE SHEETS 1 AND 2

The military standard is approved by NAVAL AIR SYSTEMS COMMAND,
 Department of the Navy and is to be used by
 test activity. All other military activities are required
 to employ this standard where suitable.