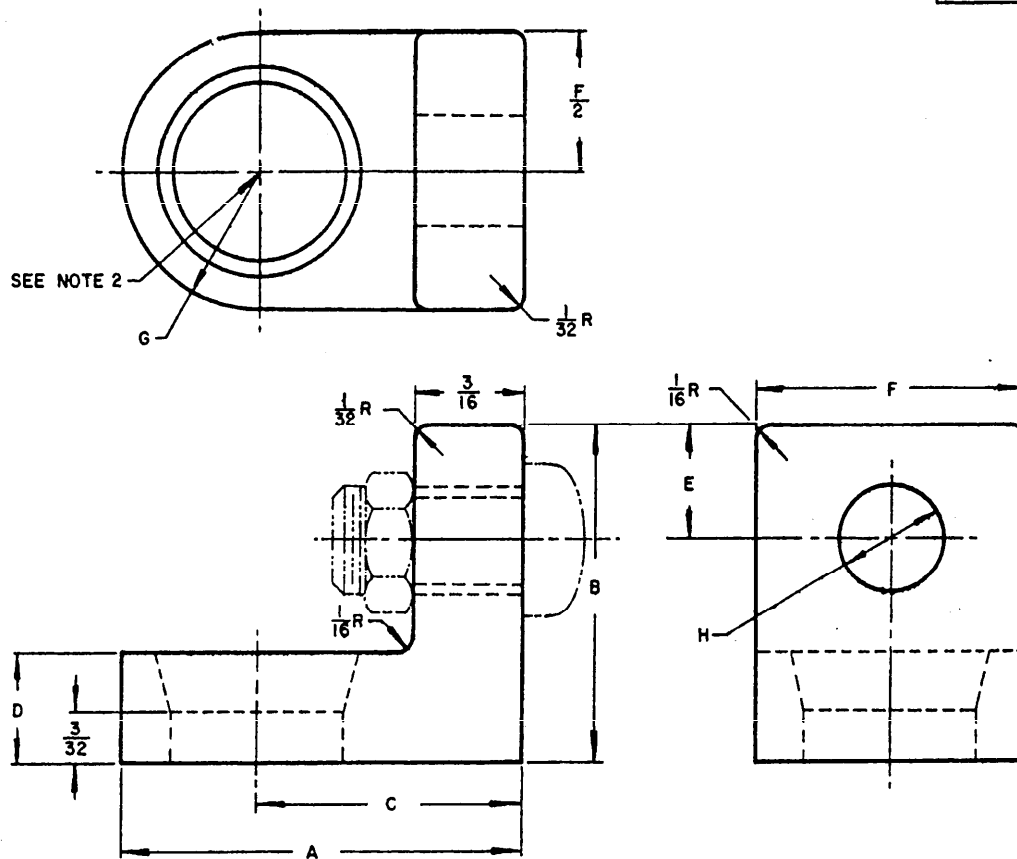


REVIEWERS: ARMY-EL; NAVY-DOCKS; AF-ROAMA  
 USERS: ARMY-GL; NAVY-MC, SHIPS, WEPS

FED. SUP CLASS  
 5940



MS PART NO.	A	B	C	D	E	F	G RAD.	H DIA.	MACHINE SCREW REQUIRED (SEE NOTE 4)
MS 17330-1	5/8	9/16	13/32	3/16	11/64	7/16	7/32	5/32	* 6-32 UNC-2A
MS 17330-2	3/4	11/16	15/32	7/32	1/4	9/16	9/32	3/16	* 8-32 UNC-2A

# NOTES:

1. UNLESS OTHERWISE SPECIFIED, DIMENSIONS ARE IN INCHES. TOLERANCES ARE  $\pm 1/64$  ON FRACTIONS.
2. SIZE OF HOLE OPTIONAL.
3. MATERIAL FOR THE CONNECTOR IS LEAD-ALLOY (4 PERCENT ANTIMONY, 96 PERCENT LEAD).
4. ROUND HEAD MACHINE SCREW (LEAD COATED) 1/2 INCH LONG WITH HEXAGON NUT (LEAD COATED) IS REQUIRED.
5. REFERENCED DOCUMENTS SHALL BE OF THE ISSUE IN EFFECT ON DATE OF INVITATIONS FOR BID.
6. FOR DESIGN FEATURE PURPOSES, THIS STANDARD TAKES PRECEDENCE OVER PROCUREMENT DOCUMENTS REFERENCED HEREIN.

(A) ENTIRE STANDARD REVISED

This military standard is approved by the Department of Defense and is mandatory on all activities. Selection for all new engineering and design applications and for repetitive use shall be made from this document.

P A MO (ATAC)	TITLE	MILITARY STANDARD
Other Cust NAVY-Docks AF-ROAMA	ADAPTER, BATTERY TERMINAL	MS 17330
PROCUREMENT SPECIFICATION NONE	SUPERSEDES	SHEET 1 OF 1

APPROVED 3 AUGUST 1961 REVISED (A) 11 JUNE 1964