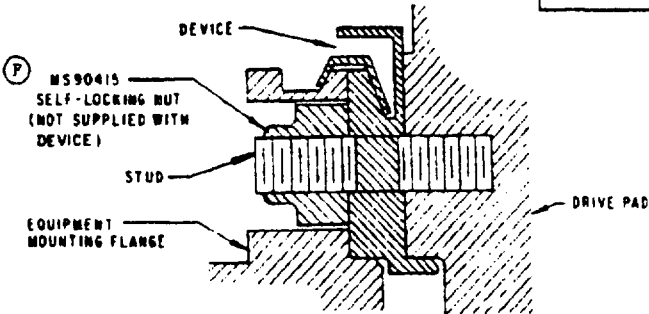
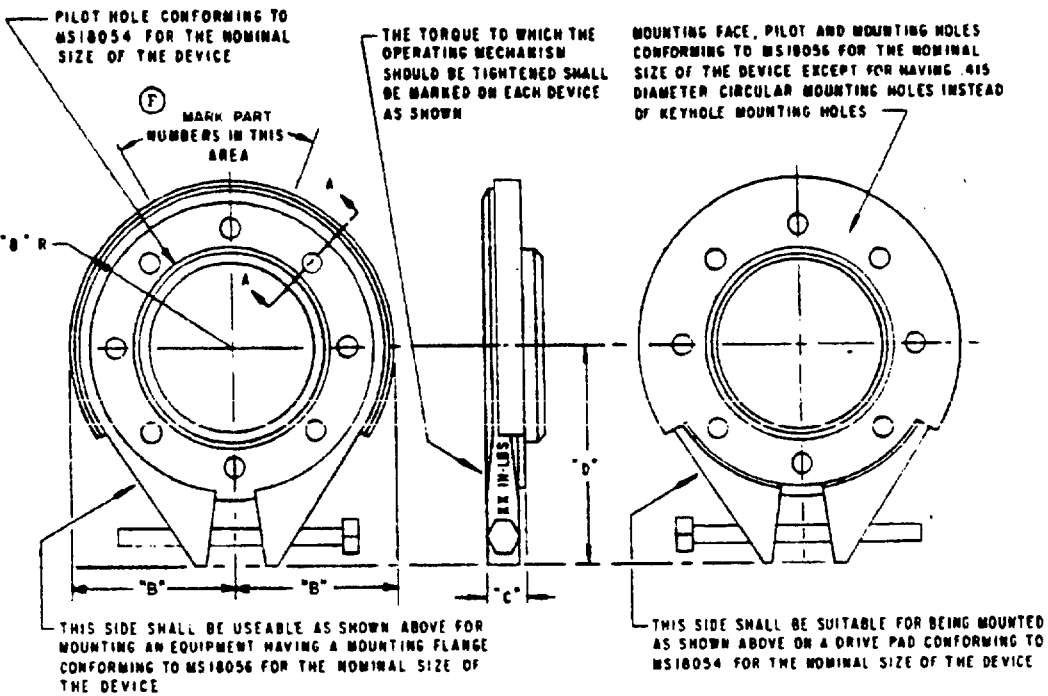


SECTION A-A ENLARGED  
WITH DEVICE OPEN



SECTION A-A ENLARGED WITH DEVICE INSTALLED ON  
DRIVE PAD AND EQUIPMENT INSTALLED IN DEVICE



MS PART NUMBER	NOMINAL SIZE	"A" ± .020	"B" MAX	"C" MAX	"D" MAX	MAXIMUM WEIGHT OF EQUIPMENT POUNDS	MAXIMUM OVERHUNG MOMENT OF EQUIPMENT INCH-POUNDS	MAXIMUM WEIGHT OF DEVICE POUNDS	SUPERSEDES
MS17320-4	5-INCH	365	3.400	675	3.800	100	625	1.6	MS17320-1
MS17320-5	8-INCH	365	5.000	700	5.300	150	1,410	3.0	MS17320-2
MS17320-6	10-INCH	428	6.000	800	6.300	164	2,120	3.5	MS17320-3
MS17320-7	5-INCH	365	3.400	675	3.800	175	750	2.5	MS17320-4S
MS17320-8	8-INCH	365	5.000	700	5.300	263	1,690	4.4	MS17320-5S
MS17320-9	10-INCH	428	6.000	800	6.300	322	2,540	5.0	MS17320-6S

(F) DENOTES CHANGES

P.A. OTHER CUST	TITLE (F) MOUNTING DEVICES FOR AIRCRAFT ELECTRIC EQUIPMENT QUICK ATTACH-DETACH, CIRCULAR, 5-, 8- AND 10-INCH	MILITARY STANDARD MS 17320 (AS)
PROCUREMENT SPECIFICATION MIL-E-81099	SUPERSEDES:	SHEET 1 OF 2

THIS STANDARD HAS BEEN APPROVED BY THE MILITARY STANDARDIZATION AUTHORITY AND IS MANDATORY FOR USE BY ALL ACTIVITIES. ALL OTHER MILITARY ACTIVITIES ARE REQUIRED TO EMPLOY THIS STANDARD UNLESS OTHERWISE SPECIFIED.

FED. SUP CLASS  
6115

## NOTES:

- 1 SPECIFICATION: -DATA FOR MIL-E-81099 ARE AS FOLLOWS (INITIAL NUMBERS REFER TO PARAGRAPHS OF THE SPECIFICATION)
- (F) 1.2 CLASSIFICATION: -THE MS PART NUMBERS OF THE DEVICES SHALL BE AS LISTED ON SHEET 1.
- (F) 3.2 DIMENSIONS: -THE DIMENSIONS OF EACH DEVICE SHALL BE AS SHOWN AND LISTED ON SHEET 1. ALL DIMENSIONS ARE IN INCHES. EACH DEVICE SHALL CONFORM TO THE DIMENSIONS SHOWN AND LISTED ON SHEET 1 WHEN THE DEVICE IS INSTALLED ON A DRIVE PAD AND AN EQUIPMENT IS INSTALLED IN THE DEVICE, AND ALSO WHEN THE DEVICE IS INSTALLED ON A DRIVE PAD AND THE DEVICE IS OPEN, AS NECESSARY, TO INSTALL AN EQUIPMENT IN THE DEVICE OR REMOVE AN EQUIPMENT FROM THE DEVICE.
- 3.3 SPECIAL REQUIREMENTS:
- A. OPERATING MECHANISM: -THE OPERATING MECHANISM SHALL POSITIVELY OPEN THE DEVICE AS WELL AS CLOSE IT, AND SHALL BE SELF-LOCKING, OR SHALL INCLUDE PROVISIONS FOR SAFETY-WIRING IT WHEN CLOSED.
- (F) 3.5 PARTS: -EACH DEVICE SHALL CONSIST OF ONLY ONE PART FOR PURPOSES OF INSTALLATION, AND NO PART OF THE DEVICE SHALL BECOME SEPARATED FROM THE REST OF THE DEVICE WHEN THE DEVICE IS OPEN AND NOT INSTALLED.
- 3.6 COLOR: -NOT APPLICABLE.
- 3.7 WEIGHT: -THE WEIGHT OF EACH DEVICE SHALL NOT EXCEED THE VALUE LISTED ON SHEET 1.
- (F) 3.8 IDENTIFICATION MARKING: -THE MANUFACTURER'S PART NUMBER AND THE MS PART NUMBER SHALL BE MARKED IN ACCORDANCE WITH MIL-STD-130 IN THE AREA SHOWN ON SHEET 1.
- 4.3.1 INDIVIDUAL TESTS: -THE INDIVIDUAL TESTS SHALL BE THOSE OF 4.6.1, 4.6.2, AND 4.6.3.
- 4.3.2 SAMPLING TESTS: -ONE DEVICE OUT OF EACH 100 SHALL BE SUBJECTED TO THE TEST OF 4.6.4.
- 4.5 TEST CONDITIONS: -FOR THE EVALUATION TEST OF 4.6.4, THE DEVICE SHALL BE MOUNTED ON A DRIVE PAD CONFORMING TO MS18054 FOR THE NOMINAL SIZE OF THE DEVICE.
- ADD 4.6.3.1 FIT: -THE DEVICE SHALL BE TESTED TO DETERMINE THAT IT IS USABLE FOR CLAMPING THE MOUNTING FLANGE OF AN EQUIPMENT HAVING A MOUNTING FLANGE CONFORMING TO MS18056 FOR THE NOMINAL SIZE OF THE DEVICE, AND THAT IT CONFORMS TO THE SPECIAL REQUIREMENTS. (THE DEVICE NEED NOT BE INSTALLED ON A DRIVE PAD FOR THIS TEST.)
- (F) 4.6.4 EVALUATION: -THE DEVICE SHALL BE TESTED TO DETERMINE THAT IT IS USABLE FOR CLAMPING THE MOUNTING FLANGE OF AN EQUIPMENT HAVING A MOUNTING FLANGE CONFORMING TO MS18056 FOR THE NOMINAL SIZE OF THE DEVICE. THE WEIGHT AND OVERHUNG MOMENT OF THE EQUIPMENT SHALL BE AS SPECIFIED ON SHEET 1. WHEN THE CLAMP IS OPEN, THE EQUIPMENT SHALL BE READILY REMOVABLE.
- (F) ADD 4.6.6.1 VIBRATION: -WITH AN EQUIPMENT OF THE SPECIFIED WEIGHT AND OVERHUNG MOMENT (+0% -5%) INSTALLED AS SHOWN ON SHEET 1, THE DEVICE SHALL BE SUBJECTED TO THE VIBRATION TEST OF MIL-E-81910 FOR ENGINE-MOUNTED COMPONENTS EXCEPT THAT THE MAXIMUM ACCELERATION OF ANY POINT OF THE EQUIPMENT SHALL NOT EXCEED 25G.
- (F) ADD 4.6.11 LIFE: -THE DEVICE SHALL BE SUBJECTED TO 1,000 CYCLES OF TIGHTENING THE DEVICE ON A MOUNTING FLANGE AS SPECIFIED ABOVE FOR THE FIT TEST, AND THEN OPENING IT. THE AXIS OF THE DEVICE MAY BE VERTICAL, WITH THE EQUIPMENT ATOP THE DEVICE, AND THE EQUIPMENT NEED NOT BE REMOVED FROM THE DEVICE AT ANY TIME DURING THE TEST, BUT THE DEVICE SHALL BE OPENED ENOUGH TO REMOVE THE EQUIPMENT DURING EACH CYCLE WEARING OUT THE SELF-LOCKING DEVICE, IF ONE IS EMPLOYED, SHALL NOT CONSTITUTE FAILURE OF THIS TEST PROVIDED THE SELF-LOCKING DEVICE IS READILY REPLACEABLE AND HAS A LIFE OF AT LEAST 100 CYCLES.

This military standard is approved by NAVAL AIR SYSTEMS COMMAND, Department of the Navy and shall be used by that activity. All other military activities are required to comply with standard where applicable.

P.A. NAVY - AS Other Case	TITLE MOUNTING DEVICES FOR AIRCRAFT ELECTRIC EQUIPMENT, QUICK ATTACH-DETACH, CIRCULAR, 5-, 8-, AND 10-INCH	MILITARY STANDARD <b>MS17320(AS)</b>
PROCUREMENT SPECIFICATION MIL-E-81099	SUPERSEDES	SHEET 2 OF 2

DD FORM 672-1 (Limited circulation)

PREVIOUS EDITIONS OF THIS FORM ARE OBSOLETE

PLATE NO. 2807

APPROVED 7 JULY 61 (F) FOR CHANGES SEE SHEETS 1 &amp; 2