

APPROVED 15 JUN 1962 REVISED

NOTICE.—When Government drawings, specifications, or other data are used for any purpose other than in connection with a definitely related Government procurement operation, the United States Government thereby incurs no responsibility, nor any obligation whatsoever; and the fact that the Government may have furnished, furnished, or in any way supplied the said drawings, specifications, or other data is not to be regarded by implication or otherwise as in any manner licensing the holder or any other person or corporation, or conveying any rights or permission to manufacture, use, or sell any patented invention that may in any way be related thereto.

This standard has been approved by the BUREAU OF SHIPS and is mandatory for use by Department of the NAVY, and is mandatory for use by that activity. All other military activities are required to employ this standard where suitable.

LIST OF MATERIAL - QUANTITIES FOR ONE UNIT						FED. SUP CLASS 6220
PC. NO.	NAME	QTY.	MATERIAL	SPECIFICATION	REQUIREMENTS	
1.	BOX	1	BRASS		SEE REQT. 5	
2.	CHANNEL, MOUNTING	1	BRASS			
3.	CHANNEL, MOUNTING 9" LONG	3		S74031-83		
4.	BRACKET, MOUNTING	2	BRASS			
5.	BRACKET, MOUNTING	3		S74031-4		
6.	HINGE LONG	AS REQD.	BRASS	S74031-74		
7.	HINGE SHORT	2	BRASS			
8.	PAD	8	BRASS			
9.	PAD	6	BRASS			
10.	ASSY. BOX					
11.	ASSY. COVER					
12.	COVER	1	CAST OR SHEET BRASS			
13.	CRADLE, LAMP	2	BRASS			
14.	RING, RETAINING	2	BRASS			
15.	CLIP, RETAINING RING	2	BRASS			
16.	GASKET, LAMP	2	MOLDED RUBBER			
17.	ASSY. RETAINING RING					
18.	GASKET, LENS	2	MOLDED RUBBER			
19.	RING, LENS SECURING	2	BRASS			
20.	GASKET "O" RING SIZE AN6227-83	1	NEOPRENE			
21.	FASTENER, STUD, LION #5-0-320 OR EQUAL	2			CAD. PLATE	
22.	FASTENER, SPRING, LION #5-295 OR EQUAL	2			CAD. PLATE	
23.	LAMP, 150W - SEE SCHEDULE	2			SEE REQT. 2	
24.	PLATE, INFORMATION	1	BRASS			
25.	LENS (RED)	1		S74222-1		
26.	LENS (GREEN)	1		S74222-2		
27.	BOARD, TERMINAL (WITHOUT CONNECTORS)	1				
28.	WIRE TYPE B-16	AS REQD.				
29.	COCK, DRAIN	1	BRASS		SEE REQT. 3	
30.	PAD, COVER SECURING (INTERMEDIATE)	1	BRASS			
31.	PAD, COVER SECURING	2	BRASS			
32.	GASKET	2	ASBESTOS CLOTH			
33.	SCREW, #8-32 R.H. 3/8 LONG	16	BRASS			
34.	SCREW, #8-32 R.H. 1/2 LONG	2	BRASS			
35.	SCREW, #10-24 R.H. 3/8 LONG	12	BRASS			
36.	WASHER, SHKPRF FOR #8 SCR	18	PHOSPHOR BRONZE	INT LOCK AS APD		
37.	WASHER, SHKPRF FOR #10 SCR	12	PHOSPHOR BRONZE	INT LOCK AS APD		
38.	SCREW, COVER 3/8-16, 1 1/8 LG	3	BRASS		SEE REQT. 4	
39.	SCREW, #6-32 RH 3/16 LONG	4	BRASS			

P.A. SHIPS Other Cust	TITLE LIGHT, POLARITY-150 WATT SYMBOL 215	MILITARY STANDARD MS 17315 (SHIPS)
PROCUREMENT SPECIFICATION MIL-F-16377	SUPERSEDES: DWG 9000-S6405-74103	SHEET 2

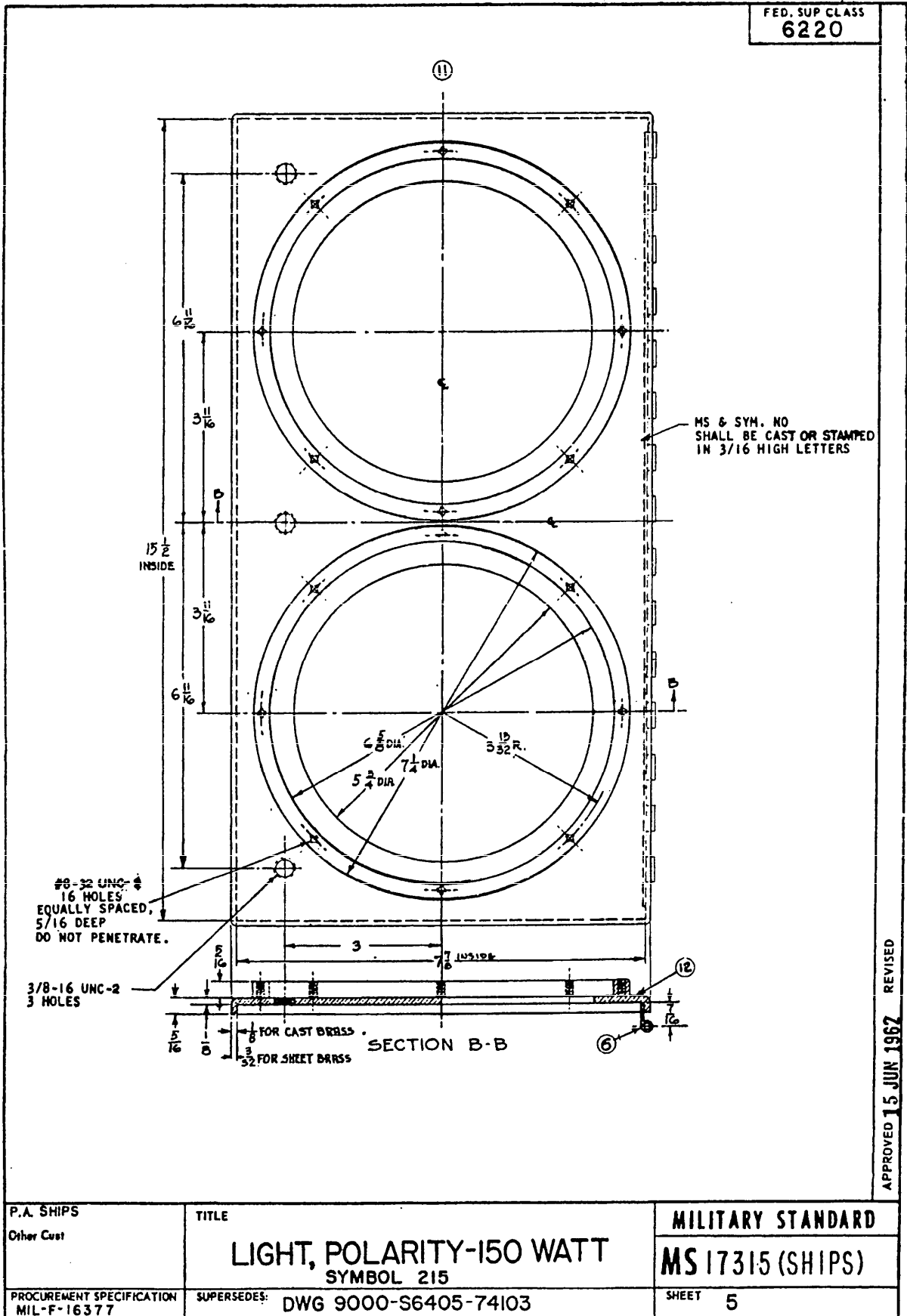
APPROVED 15 JUN 1962 REVISED

P.A. SHIPS	TITLE	MILITARY STANDARD
Other Cust	LIGHT, POLARITY-150 WATT SYMBOL 215	MS 17315 (SHIPS)
Procurement Specification MIL-F-16377	SUPERSEDES: DWG 9000-S6405-74103	SHEET 4

FED. SUP CLASS
6220

NOTICE.—When Government drawings, specifications, or other data are used for any purpose other than in connection with a definitely related Government procurement operation, the United States Government hereby incurs no responsibility, nor any obligation whatsoever; and the fact that the Government may have furnished, furnished, or in any way supplied the said drawings, specifications, or other data is not to be regarded by implication or otherwise as in any manner licensing the holder or any other person or corporation, or conveying any rights or permission to manufacture, use, or sell any patented invention that may in any way be related thereto.

This standard has been approved by the Bureau of Ships Department of the Navy and is mandatory for use by that activity. All other military activities are required to employ this standard where suitable.



APPROVED 15 JUN 1967 REVISED

FED. SUP CLASS
6220

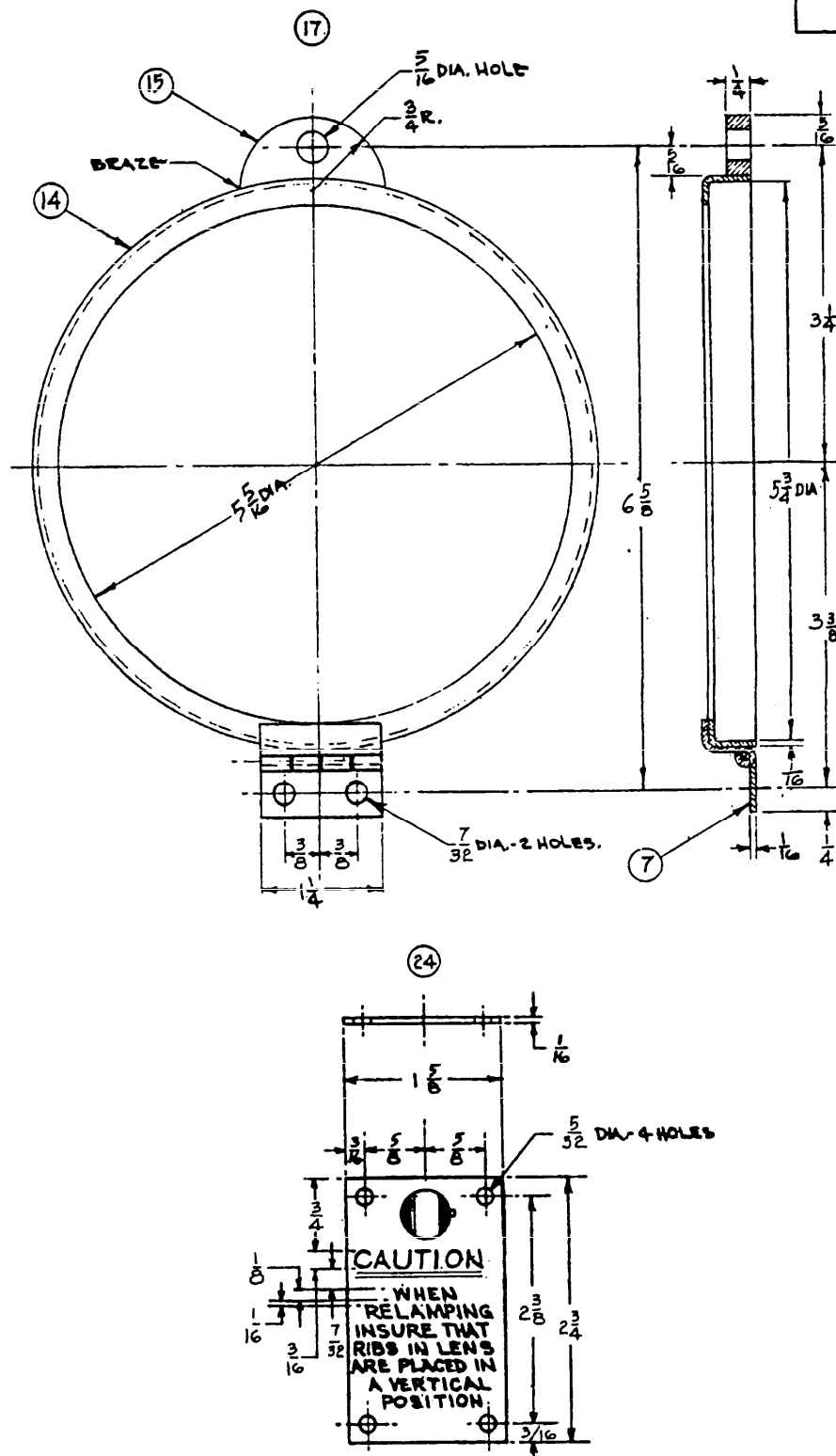
NOTICE—When Government drawings, specifications, or other data are used for any purpose other than in connection with a definitely related Government procurement operation the United States Government thereby incurs no responsibility, nor any obligation whatsoever; and the fact that the Government may have formulated, furnished, or in any way supplied the said drawings, specifications, or other data is not to be regarded by implication or otherwise as in any manner licensing the holder or any other person or corporation, or conveying any rights or permission to manufacture, use, or sell any patented invention that may in any way be related thereto.

This standard has been approved by the BUREAU OF SHIPS Department of the NAVY and is mandatory for use by that activity. All other military activities are required to employ this standard where suitable.

		FED. SUP CLASS 6220
		APPROVED 15 JUN 1962 REVISED
P.A. SHIPS	TITLE	MILITARY STANDARD
Other Cust	LIGHT, POLARITY-150 WATT SYMBOL 215	MS 17315 (SHIPS)
Procurement Specification MIL-F-16377	SUPERSEDES: DWG 9000-S6405-74103	SHEET 7

NOTICE.—When Government drawings, specifications, or other data are used for any purpose other than in connection with a definitely related Government procurement operation, the United States Government thereby incurs no responsibility nor any obligation whatsoever; and the fact that the Government may have furnished, furnished, or in any way supplied the said drawings, specifications, or other data is not to be regarded by implication or otherwise as in any manner licensing the holder or any other person or corporation, or conveying any rights or permission to manufacture, use, or sell any patented invention that may in any way be related thereto.

This standard has been approved by the Bureau of Ships Department of the Navy and is mandatory for use by that activity. All other military activities are required to employ this standard where suitable.



FED. SUP CLASS
6220

APPROVED 15 JUN 1962 REVISED

P.A. SHIPS
Other Cust

TITLE

LIGHT, POLARITY-150 WATT
SYMBOL 215

MILITARY STANDARD

MS 17315 (SHIPS)

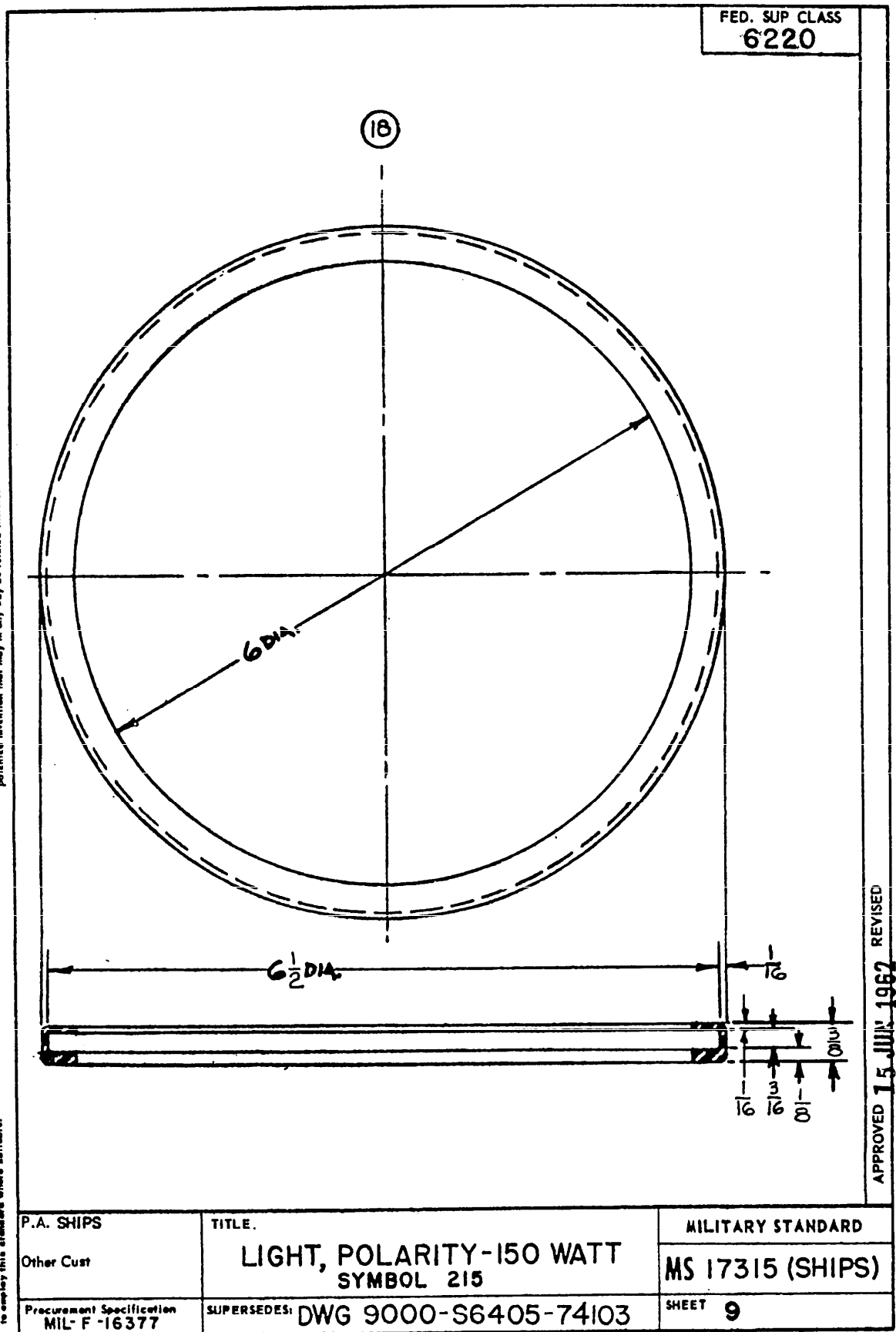
PROCUREMENT SPECIFICATION
MIL-F-16377

SUPERSEDES: DWG 9000-S6405-74103

SHEET 8

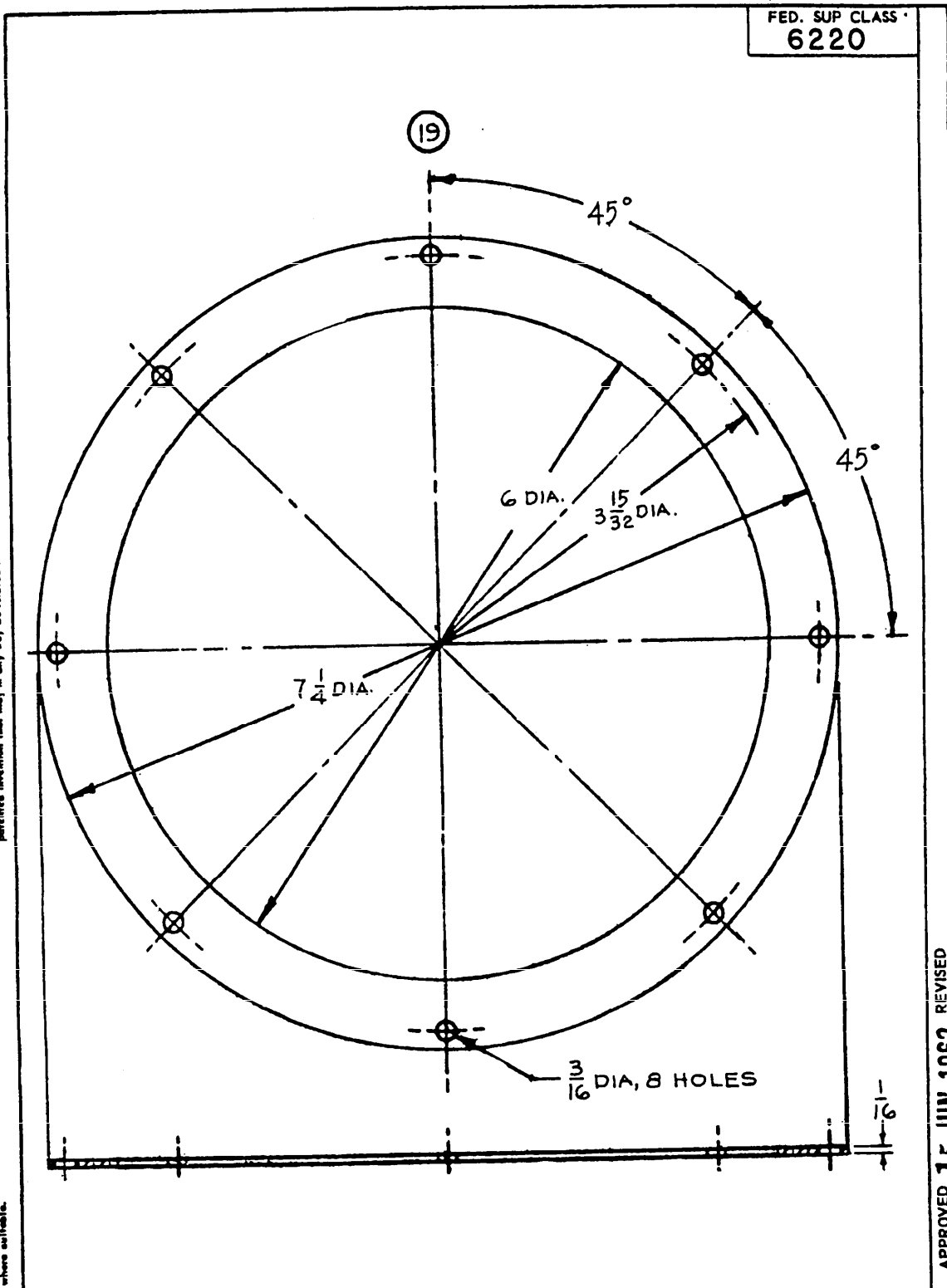
NOTICE.—When Government drawings, specifications, or other data are used for any purpose other than in connection with a definitely related Government procurement operation, the United States Government thereby incurs no responsibility, nor any obligation whatsoever; and the fact that the Government may have formulated, furnished, or in any way supplied the said drawings, specifications, or other data is not to be regarded by implication or otherwise as in any manner licensing the holder or any other person or corporation, or conveying any rights or permission to manufacture, use, or sell any patented invention that may in any way be related thereto.

This standard has been approved by the BUREAU OF SHIPS Department of the NAVY and is mandatory for use by that activity. All other military activities are required to employ this standard where suitable.



NOTICE—When Government drawings, specifications, or other data are used for any purpose other than in connection with a definitely -funded Government procurement operation, the United States Government hereby incurs no responsibility, nor any obligation whatsoever; and the fact that the Government may have formulated, furnished, or in any way applied the said drawings, specifications, or other data is not to be regarded by implication or otherwise as in any manner licensing the holder or any other person or corporation, or conveying any rights or permission to manufacture, use, or sell any patented invention that may in any way be related thereto.

This standard has been approved by the BUREAU OF SHIPS Department of the NAVY and is mandatory for use by that activity. All other military activities are required to employ this standard where suitable.



FED. SUP CLASS
6220

APPROVED 15 JUN 1962 REVISED

P.A. SHIPS	TITLE	MILITARY STANDARD
Other Cust	LIGHT, POLARITY-150 WATT SYMBOL 215	MS 17315(SHIPS)
Procurement Specification MIL- F- 16377	SUPERSEDES: DWG 9000-S6405-74103	SHEET 10

FED. SUP CLASS
6220

REQUIREMENTS

1. FIXTURE SHOWN HEREON SHALL COMPLY WITH AND BE TESTED IN ACCORDANCE WITH THE APPLICABLE REQUIREMENTS OF MILITARY SPECIFICATION MIL-F-16377.
2. LAMPS SHALL BE FURNISHED.
3. DRAIN COCK SHALL BE SUITABLE COMMERCIAL TYPE MADE OF BRASS, MODIFIED AS REQUIRED, TO SUIT INSTALLATION.
4. COVER SCREW, PC. 38, SHALL BE SEALING TYPE AS MANUFACTURED BY THE AUTOMATIC AND PRECISION MANUFACTURING COMPANY, "SEELSKREW" OR EQUAL.
5. A COMMERCIALY AVAILABLE BOX AND COVER (BRASS OR ALUMINUM, PROTECTED AGAINST CORROSION) ADAPTED FOR THE PURPOSE, MAY BE SUBSTITUTED FOR THE SPECIFIED BOX AND COVER.
6. WIRING DIAGRAM IN A HOLDER SHALL BE INSTALLED ON INSIDE OF BOX IN ACCORDANCE WITH THE REQUIREMENTS OF SPEC MIL-E-2036.

LAMP SCHEDULE			
NAVY TYPE	VOLTAGE	STOCK NO.	INDUSTRY NO.
SB-13	115		150 PAR 46
SB-14	24		4644

NOTES

1. FOR DESIGN FEATURE PURPOSES, THIS STANDARD TAKES PRECEDENCE OVER PROCUREMENT DOCUMENTS REFERENCED HEREIN.
2. REFERENCED DOCUMENTS SHALL BE OF THE ISSUE IN EFFECT ON DATE OF INVITATIONS FOR BID.

(Project 6220-M011sh)

This standard has been approved by the Bureau of Ships Department of the Navy and is mandatory for use by that activity. All other military activities are required to employ this standard where suitable.

NOTICE.—When Government drawings, specifications, or other data are used for any purpose other than in connection with a definitely related Government procurement operation, the United States Government thereby incurs no responsibility, and no obligation, whatever, and the fact that the Government may have furnished, furnished, or in any way supplied the said drawings, specifications, or other data is not to be regarded by implication or otherwise as in any manner licensing the holder or any other person or corporation, or conveying any rights or permission to manufacture, use, or sell any patented invention that may in any way be related thereto.

P.A. SHIPS Other Cust	TITLE LIGHT, POLARITY-150 WATT SYMBOL 215	MILITARY STANDARD MS 17315 (SHIPS)
PROCUREMENT SPECIFICATION MIL-F-16377	SUPERSEDES: DWG 9000-S6405-74103	SHEET 11

APPROVED 15 JUN 1962 REVISED