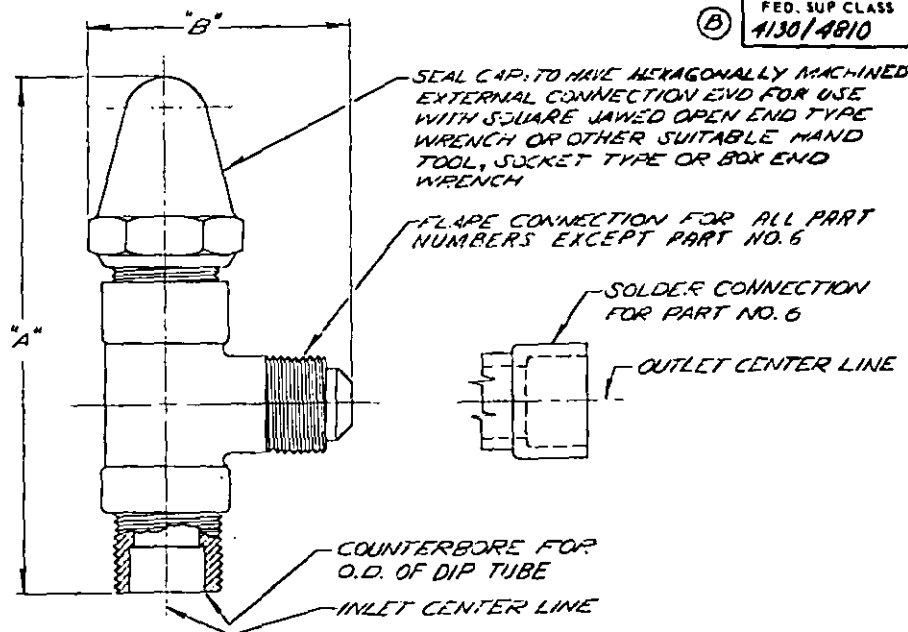


FED. SUP CLASS
4130/4810

VALVE DIMENSIONS IN INCHES

DASH NO.	SIZE INLET NPT	SIZE OUTLET		A (MAX)	B (MAX)
		O.D. FLARE	O.D. SOLDER		
-1	1/4	1/4	—	3 3/8	1 3/8
-2	3/8	3/8	—	4	2
-3	3/8	1/2	—	4 1/4	2
-4	1/2	1/2	—	4 1/2	2 1/4
-5	1/2	3/4	—	5	2 1/2
-6	3/4	—	3/8	6	2 3/4
-7	1/2	3/8	—	4 1/2	2 1/4

- TYPE: ANGLE, PACKED, BACK-SEATING OR NON-BACK-SEATING KEY OPERATED PLUG ELEMENT, WITH GASKETED SEAL CAP, VALVE STEM SHAFT TO BE 3/16, 1/4 OR 5/16 INCH SQUARE SHAPE.
- MATERIALS: VALVE BODY AND SEAL CAP-BRASS OR STEEL.
- RING GASKET - SOFT COPPER.
- VALVE STEM (INCLUDING INTEGRAL PLUG): CONE-RICAL BRONZE OR STEEL TREATED TO RESIST CORROSION.
- OPERATING CONDITIONS: A. MAXIMUM OPERATING PRESSURE: 350 PSIG.
B. MAXIMUM OPERATING TEMPERATURE: 200 F.
- CONNECTION ENDS: INLET: MALE PIPE THREAD IN ACCORDANCE WITH MS-35868.
OUTLET: A. FLARE TUBE MALE THREAD IN ACCORDANCE WITH MS-35873.
B. SOLDER TUBE FEMALE SOCKET IN ACCORDANCE WITH MS-35925 FOR O.D. TUBE SIZE 7/8 INCH.
- NOTES:
1. DIMENSIONS IN INCHES.
 2. FOR DESIGN FEATURE PURPOSES, THIS STANDARD TAKES PRECEDENCE OVER PROCUREMENT DOCUMENTS REFERENCED HEREIN.
 3. REFERENCED DOCUMENTS SHALL BE OF THE ISSUE IN EFFECT ON THE DATE OF INVITATION FOR BIDS OR REQUEST FOR PROPOSAL.
 4. THIS IS A DESIGN STANDARD AND SHALL NOT BE USED AS A PART NUMBER.
 5. PART NUMBER: THE MS PART NUMBER CONSISTS OF THE MS NUMBER PLUS THE DASH NUMBER. EXAMPLE: MS 17243-1.

(A) ADDED SIZE 7

P.A. ARMY - GL Other Cust NAVY - YD USAF - 99	TITLE VALVES, ANGLE, SHUT-OFF, PACKED, RECEIVER, REFRIGERANT-12	MILITARY STANDARD MS 17243
PROCUREMENT SPECIFICATION MIL-1'-22854	SUPERSEDES:	SHEET / OF /