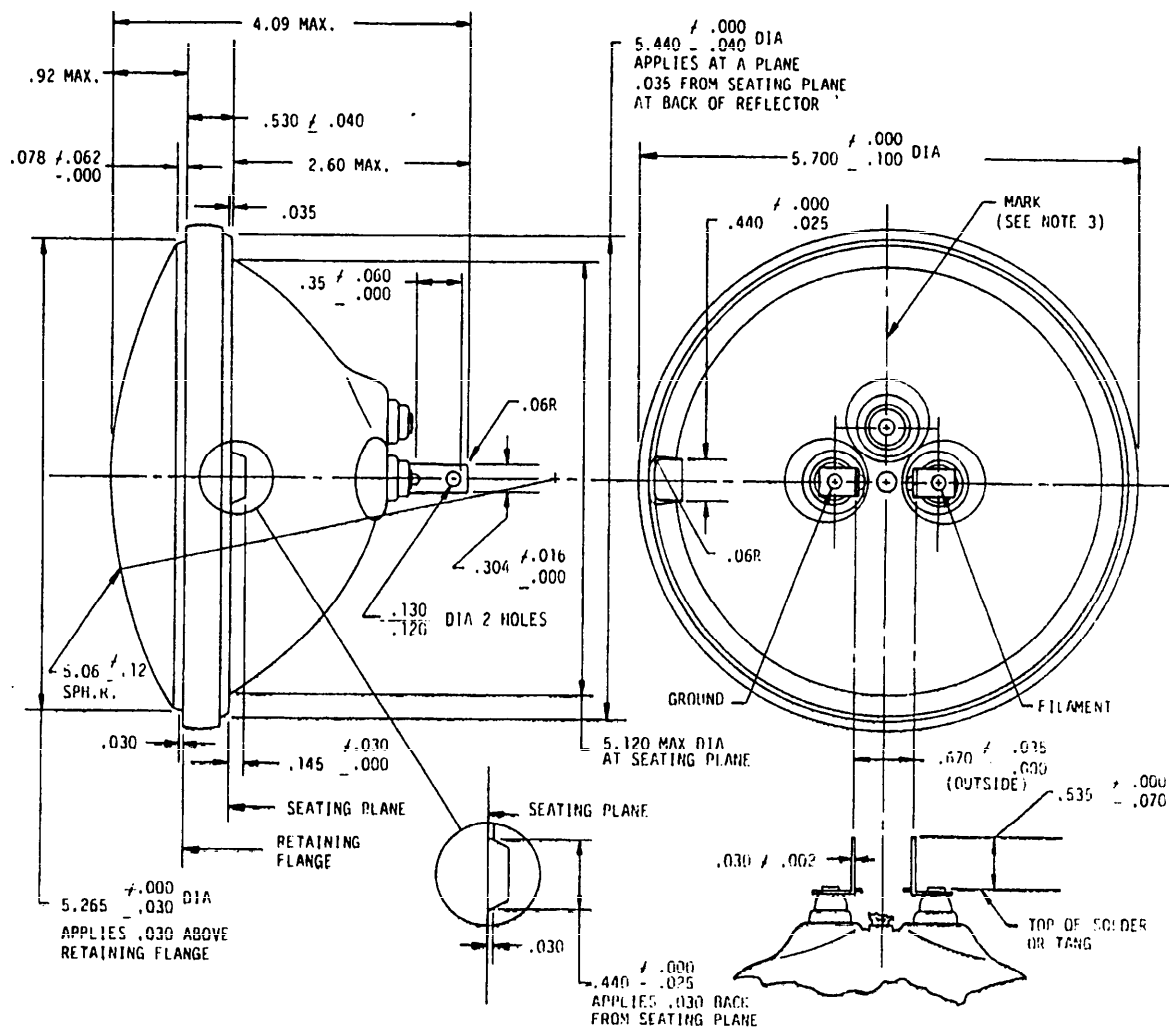


REVIEW ACTIVITIES : 82
USER ACTIVITIES : YD,MC



NOTE: INTERSECTION OF VERTICAL AND HORIZONTAL CENTERLINES THROUGH CONTACTS MUST FALL WITHIN .25 OF AXIS OF LAMP.

MS PART NO.	DESIGN		MAX. AMPS	INITIAL MAX. CP (APPROX.)	FIL. CONST.	BEAM SPREAD IN DEGREES (APPROX.)		HOURS LIFE (APPROX.)
	VOLTS	WATTS				HOR.	VERT.	
MS 17166-4880	28	60	2.3	6,000	2C-6 IN SERIES	40	7	800 AT 28V

NOTES.

1. ALL DIMENSIONS IN INCHES.
2. THE MS PART NUMBER CONSISTS OF THE MS NUMBER FOLLOWED BY A DASH NUMBER WHICH IS THE INDUSTRY TRADE NUMBER.
3. THE MS DASH NUMBER AND VOLTAGE SHALL BE PERMANENTLY MARKED ON REAR SURFACE OF LAMP.
4. THE TYPE OF SERVICE (HEADLAMP) SHALL BE PERMANENTLY MARKED ON LENS.
5. THE LAMP SHALL BE OF THE ALL-GLASS SEALED BEAM TYPE AND SHALL CONFORM TO S.A.E. J598 FOR SEALED LIGHTING UNIT FOR CONSTRUCTION AND INDUSTRIAL MACHINERY.
6. REFERENCED DOCUMENTS SHALL BE OF THE ISSUE IN EFFECT ON DATE OF INVITATION FOR BIDS.

(C) TITLE CORRECTED

P. A. ME Other Cust	INTERNATIONAL INTEREST	TITLE LAMP, INCANDESCENT, PAR-46 24 VOLT HEADLAMP 2.CONTACT LUGS	MILITARY STANDARD MS 17166
AS 99			
PROCUREMENT SPECIFICATION NONE	SUPERSEDES:		SHEET 1 OF 1

This military standard is approved for use by all Departments and Agencies of the Department of Defense. Selection for all new engineering and design applications and for repetitive use shall be made from this document.