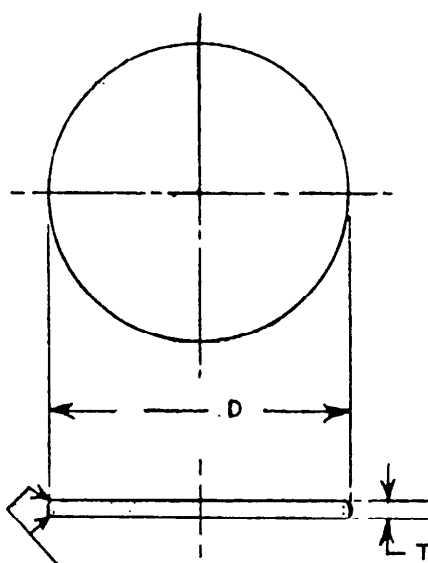


FED. SUP CLASS

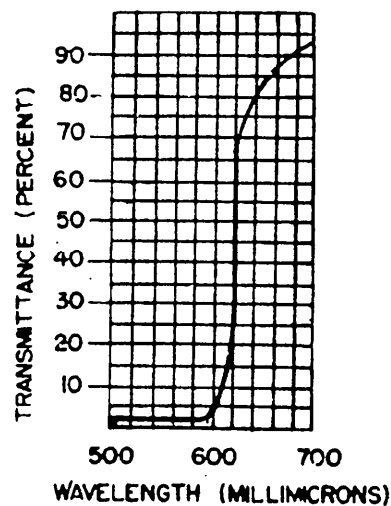
6210

Figure 1.-Outline dimensions.



Unless otherwise specified,
edges shall have a slight
chamfer or radius.

Figure 2.

CURVE OF LIGHT TRANSMISSION
OF RED MATERIAL

This standard has been approved by the Bureau of Ships
Department of the Navy and is mandatory for use by
that activity. All other military activities are required
to employ this standard where suitable.

Ⓐ Entire standard revised.

P.A. SH	TITLE WINDOW, LIGHTING	MILITARY STANDARD
Other Cust	FIXTURE, INCANDESCENT, PLASTIC, DISC SHAPED	MS17153(SHIPS)
Procurement Specification NONE	SUPERSEDES:	SHEET 1 OF 3

APPROVED 9 MAR 1961 REVISED Ⓐ 12 AUG 1965

This standard has been approved by the Bureau of Ships
Department of the Navy and is mandatory for use by
that activity. All other military activities are required
to employ this standard where suitable.

P.A. SH Other Cust	TITLE WINDOW, LIGHTING FIXTURE, INCANDESCENT, PLASTIC, DISC SHAPED	MILITARY STANDARD MS 17153(SHIPS)
PROCUREMENT SPECIFICATION NONE	SUPERSEDES:	SHEET 2

MS PART NUMBER	MATERIAL	DIMENSIONS ^{2/}		COLOR Trans- parent	FINISH	LIGHT TRANSMISSION Percent	WAVE LENGTH Millimicrons	USED WITH
		D (Diameter) Inches	T (Thickness) Inches					
MS17153-1	Plastic, sheet, acrylic, heat resistant, utility grade, in accordance with MIL-P-21105	0.575	0.081	Clear	—	90	—	Drawing 8000-S6202-73907
MS17153-2		0.968	0.062	Red	—	See Fig- ure 2	590 to 700	MS17151
MS17153-3		0.875	0.125	Clear	—	90	—	Drawings 8000-S6202-73918 through 8000-S6202-73922 as applicable.
MS17153-5		0.875	0.125	Clear	—	90	—	
MS17153-7		0.875	0.125	Green	Etched on one side	50 ± 5	475 to 550	
MS17153-9		0.875	0.125	Blue		50 ± 5	425 to 475	
MS17153-11		0.875	0.125	Amber		90 ± 5	525 to 700	
MS17153-13		0.875	0.125	Yellow		90 ± 5	500 to 600	
MS17153-15		0.875	0.125	Red	—	See Fig- ure 2	590 to 700	MS17225 2/ Drawing 8000-S6405-74443 3/ Drawing 8-S-5293-L 2/ Drawing 8-S-5293-L Specification MIL-L-2034
MS17153-17		2.083	0.125	Red	—	See Fig- ure 2	590 to 700	
MS17153-18		2.625	0.125	Clear	—	90	—	
MS17153-19		4.312	0.250	Clear	—	90	—	
MS17153-20		4.312	0.250	Red	—	See Fig- ure 2	590 to 700	
MS17153-21	Plastic heat resistant, commercial plexiglass, pattern 9-6, or equiv- alent. The pattern shall be the reverse of Luminex glass.	13.125	0.125	Clear	See Require- ment 2	—	—	

1/ MS Part Numbers 17153-4, -6, -8, -10, -12, -14, -16 have been canceled. Items not developed.

2/ Standard commercial plastic tolerances shall apply.

3/ To be used for replacement only. Inactive for new design.

FED. SUP CLASS
6210

APPROVED 9 MAR 1961 REVISED A Entire standard revised.

FED. SUP CLASS

6210

REQUIREMENTS:

1. Plastic windows shall be free of defects such as imbedded particles, bubbles, scratches, blemishes and striations such as will affect their optical properties and shall provide an even distribution of transmitted light over their entire area.
2. Applicable only to part number MS17153-21:
 - (a) Adequate measures shall be taken in molding or processing plastics to insure that stress buildup does not occur or is satisfactorily treated to relieve these stresses to prevent deterioration or failure of the part or assembly.

NOTES:

1. For design feature purposes, this standard takes precedence over procurement documents referenced herein.
2. Referenced documents shall be of the issue in effect on date of invitations for bid.

Project 6210-N254SH

P.A. SH	TITLE WINDOW, LIGHTING	MILITARY STANDARD
Other Cust	FIXTURE, INCANDESCENT, PLASTIC, DISC SHAPED	MS 17153(SHIPS)
Procurement Specification NONE	SUPERSEDES:	SHEET 3

This standard has been approved by the Bureau of Ships Department of the Navy and is mandatory for use by the activity. All other military activities are required to employ this standard where suitable.

APPROVED 9 MAR 1961 REVISED A Entire standard revised.