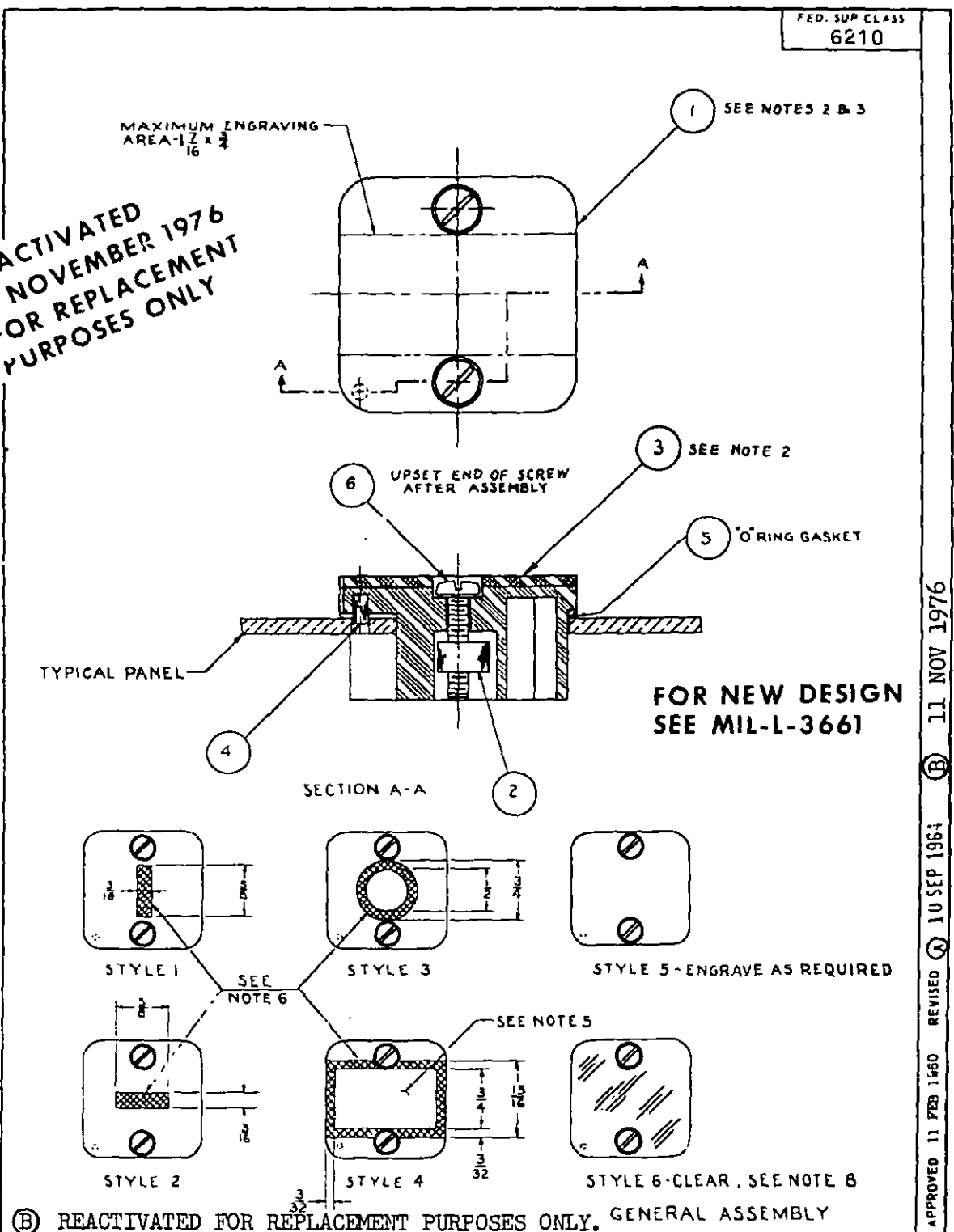


**REACTIVATED
11 NOVEMBER 1976
FOR REPLACEMENT
PURPOSES ONLY**

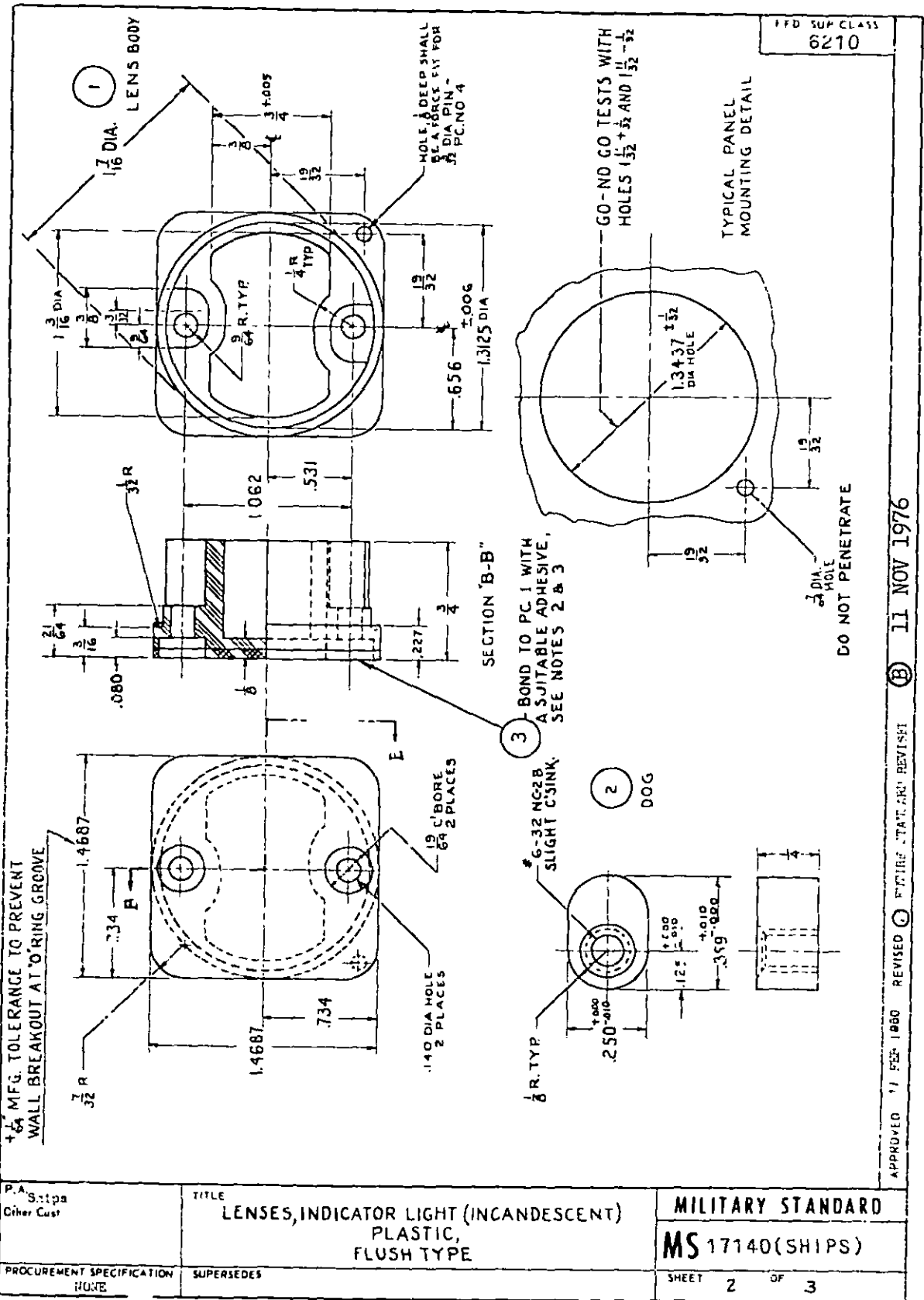
This military standard is approved for use by the Naval Ship Engineering Center, Department of the Navy, and is available for use by all Departments and Agencies of the Department of Defense.



APPROVED 11 FEB 1960 REVISED 10 SEP 1961 11 NOV 1976

P.A. Ships Other Cust	TITLE LENSES, INDICATOR LIGHT (INCANDESCENT) PLASTIC, FLUSH TYPE	MILITARY STANDARD
		MS 17140(SHIPS)
PROCUREMENT SPECIFICATION NOTE	SUPERSEDES.	SHEET 1 OF 3

This mil. standard is approved for use by the Naval Ship Engineering Center, Department of the Navy, and is available for use by all Departments and Agencies of the Department of Defense.



DD FORM 168 672-1N

LIMITED COORDINATION

PREVIOUS EDITIONS OF THIS FORM ARE OBSOLETE

MILITARY STANDARD

MS 17140(SHIPS)

SHEET 2 OF 3

APPROVED 11 FEB 1960 REVISED 10 APR 1976 (B) 11 NOV 1976

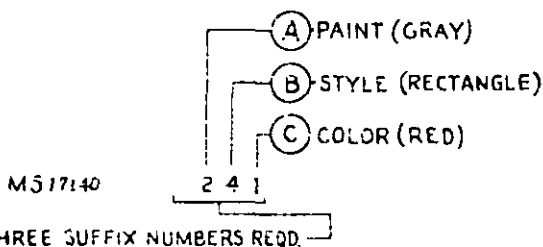
LIST OF MATERIAL

PC NO	NAME	QTY	MATERIAL	SPEC	FINISH	REMARKS
1	LENS BODY	1	ACRYLIC PLASTIC	COML	SEE NOTE	SEE NOTES 2 AND 3
2	DOG	2	POLYMER NYLACRON	THE POLYMER CORP OF PENN.		
3	LENS FACE - 1/16 THK.	AS REQD	ACRYLIC PLASTIC	COML	SEE COLOR CHART	
4	PIN, 3/32 DIA x 3/16 LG	1	SST			
5	O-RING, 1.312 ID x 1.438 OD x .062 DIA	1	RUBBER	COML		
6	SEELSKREW 6-32 x 3/16 LG	2	AUTOMATIC OR EQUIV	PRECISION MFG. CO, YONKERS, NY		

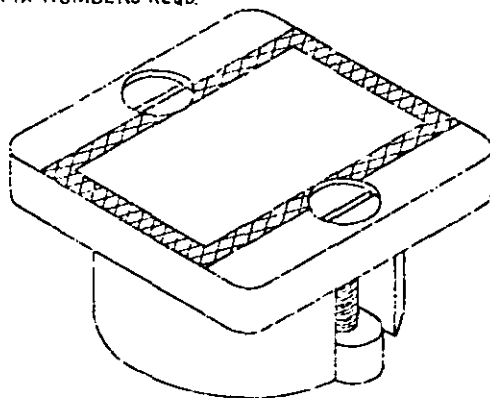
- NOTES: 1. DETAIL AND GENERAL REQUIREMENTS SHALL COMPLY WITH THE FOLLOWING NOTES OF MIL STD. MS16662-23, 24, 35, 44, 54, 66
 2. LENS FACE PC.NO.3 IS NOT USED WITH COLORS NO.6 (WHITE) AND NO.7 (CLEAR), MOULD AS ONE PIECE TO FULL THICKNESS.
 3. FOR COLORS NO.1 THRU NO.5, LENS BODY PC.NO.1 SHALL BE TRANSLUCENT WHITE, DU PONT NO. WT-05 OR EQUIVALENT
 4. EXTERIOR SURFACES TO BE PAINTED WHITE .003" - .005" THICK, THEN AS SPECIFIED, PAINT GRAY OR BLACK .002" - .005" THICK.
 5. ENGRAVE THIS AREA THRU THE BLACK OR GRAY SURFACE TO ALLOW THE LAYER OF WHITE PAINT TO APPEAR.
 6. CROSS HATCHED AREAS ARE ENGRAVED TO EXPOSE LENS FACE COLORS.
 7. LENS SHALL BE DESIGNATED BY THE NUMBER MS 17140 FOLLOWED BY THREE SUFFIX NUMBERS, AS IN THE FOLLOWING EXAMPLE: -

EXAMPLE

SUFFIX NUMBER CODE



- (A) INDICATES FINISH PAINT - NO.1=BLACK, NO.2=GRAY.
- (B) INDICATES STYLE-SEE STYLES,SHEET 1
- (C) INDICATES PLASTIC BODY COLOR-SEE COLOR CHART.



- 8. FRONT FACE AND INTERIOR SURFACES OF LENS SHALL BE FURNISHED PLAIN. (PAINT LEFT OFF TO EXPOSE LENS COLOR)
- 9. NYLON PARTS SHALL BE DELIVERED TO THE DIMENSIONS SHOWN IN A STATE OF MOISTURE EQUILIBRIUM AT 50% RELATIVE HUMIDITY.

1	RED	IRONM BHAAS #2444*
2	GREEN	" " #2092*
3	YELLOW	" " #2208*
4	AMBER	" " #2451*
5	BLUE	" " #2045*
6	WHITE	SEE NOTE 2 DU PONT # WT-05*
7	CLEAR	SEE NOTE 2 " " #NC-10*

* OR EQUIV.

(Project 6210-N506)

DIMENSIONS ARE IN INCHES	
TOLERANCES UNLESS SPECIFIED	
DECIMAL DIMENSIONS	± .005
FRACTIONAL DIMENSIONS	± 1/64
P.A. S.I.T.S	
Other Cust	
PROCUREMENT SPECIFICATION	SUPERSEDES

TITLE
LENS, INDICATOR LIGHT (INCANDESCENT)
PLASTIC,
FLUSH TYPE

MILITARY STANDARD
MS 17140(SHIPS)

SHEET 3 OF 3

This military standard is approved for use by the Naval Ship Engineering Center, Department of the Navy, and is available for use by all Departments and Agencies of the Department of Defense.

APPROVED 11 FEB 1980
REVISED 4
REVISIONS STANDARD REVISED
B 11 NOV 1976