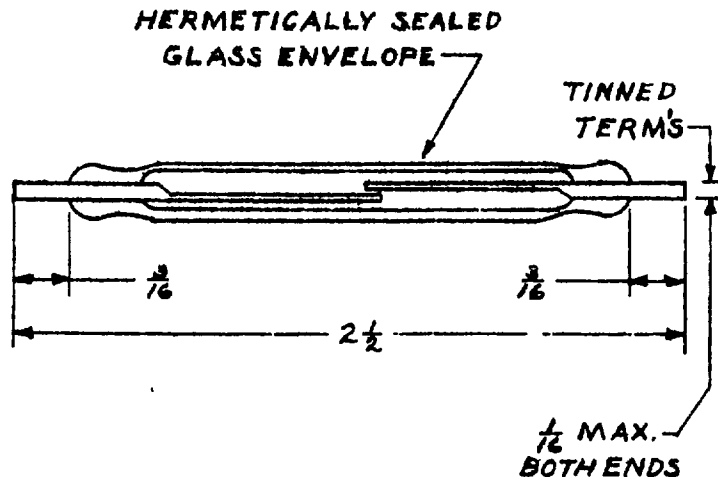
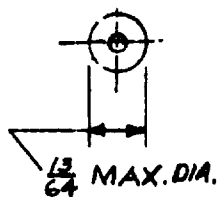


NOTE.—When Government drawings, specifications, or other data are used for any purpose other than in connection with a definitely related Government procurement operation, the United States Government thereby incurs no responsibility, nor any obligation whatsoever, and the fact that the Government name may here be mentioned, furnished, or in any way applied to the said drawings, specifications, or other data is not to be regarded by implication or otherwise as in any manner endorsing the holder or any other person or corporation, or conveying any rights or permission to manufacture use or sell any patented invention that may in any way be related thereto.

This standard has been approved by the Bureau of Ships Department of the Navy and is mandatory for use by their activity. All other military activities are required to employ this standard where suitable.



REQUIREMENTS

1. Characteristics:
Rating:
D. c. load: At 6-12-28 volts; 0.5 amps resistive.
A. c. load: At 115-220 volts, 60 cycles; 10 watt lamp load.
Poles: Single.
Action: On-Off (see requirement 2).
2. Contacts shall be actuated by an external magnetic field, which may be obtained from a permanent magnet, electromagnet or a combination of both. The contacts may be magnetically biased to a normally closed position and magnetically actuated to the open condition.
3. Test: Two contact assemblies of each 1000 contact assemblies or fraction thereof furnished on each Government order or purchased by shipbuilding contractors for installations on ships shall be tested for 10,000 operations under rated load and voltage and shall withstand this test without failure of any part thereof.

Dimensions are in inches

Tolerances unless specified

Decimal dimensions ± 0.005
Fractional dimensions $\pm 1/64$

MS part number		MILITARY STANDARD
MS17134-1		
P.A. Ships Other Cust	TITLE CONTACT ASSEMBLY, ELECTRICAL, DRY REED TYPE, S. P. S. T.	MS 17134(SHIPS)
Procurement Specification NONE	SUPERSEDES:	SHEET 1 OF 1

DD FORM 1 SEP 57 672N

LIMITED COORDINATION PREVIOUS EDITIONS OF THIS FORM ARE OBSOLETE.

(Project 5930-00215h)

APPROVED 26 Jan 1960 REVISED

PBS. SUP CLASS
5930