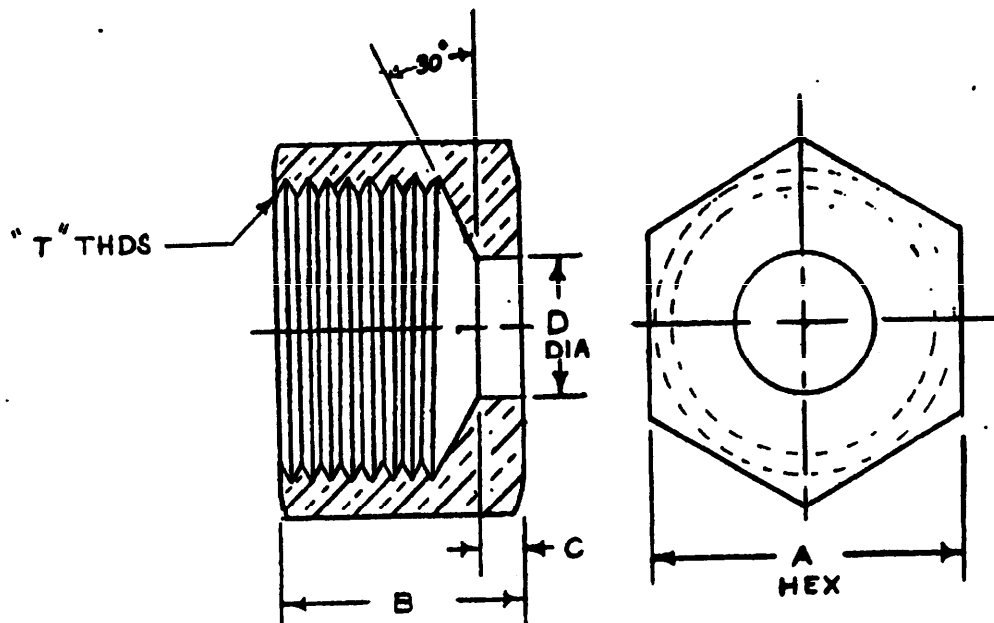


NOTICE.—When Government drawings, specifications, or other data are used for any purpose other than in connection with a definitely related Government procurement operation, the United States Government thereby incurs no responsibility, nor any obligation whatsoever; and the fact that the Government may have furnished, furnished, or in any way supplied the said drawings, specifications, or other data is not to be regarded by implication or otherwise as in any manner licensing the holder or any other person or corporation, or conveying any rights or permission to manufacture, use, or sell any patented invention that may in any way be related thereto.

This standard has been approved by the Bureau of Ships Department of the Navy and is mandatory for use by that activity. All other military activities are required to employ this standard where applicable.

FED. SUP CLASS  
5975



MS part No.	Size AWG	A	B	C	D	T	FIN
MS17036-1	14/2	7/8	13/16	1/8	0.375	3/4-16	
MS17036-2	14/3	7/8	13/16	1/8	.395	3/4-16	
MS17036-3	14/4	7/8	13/16	1/8	.425	3/4-16	
MS17036-4	14/7	1	7/8	5/32	.500	7/8-14	
MS17036-5	8/2	7/8	13/16	1/8	.520	3/4-16	
MS17036-6	14/1	5/8	9/16	1/8	.238	1/2-20	
MS17036-7	10/1	5/8	9/16	1/8	.281	1/2-20	
MS17036-8	4/0	1-1/8	7/8	5/32	.703	1-14	

#### REQUIREMENTS

1. All dimensions in inches.
2. Material shall be brass in accordance with Specification MIL-C-895.
3. Unless otherwise specified, tolerances shall be  $\pm 1/64$  on fractions and  $\pm 0.005$  on decimals.
4. Tolerances on threads shall be held to class 2 fit.
5. This standard takes precedence over documents referenced herein.
6. Referenced documents shall be of the issue in effect on date of invitation for bids.

P.A. Ships Other Cust	TITLE GLAND NUTS FOR ELECTRIC TERMINAL (HERMETIC SEAL) FITTER ASSEMBLIES	MILITARY STANDARD <b>MS 17036 (SHIPS)</b>
Procurement Specification NONE	SUPERSEDES:	SHEET 1 OF 1

DD FORM 672N

LIMITED COORDINATION

PREVIOUS EDITIONS OF THIS FORM ARE OBSOLETE.

(Project 5975-0029Sh)

APPROVED 7 JUL 1959 REVISED