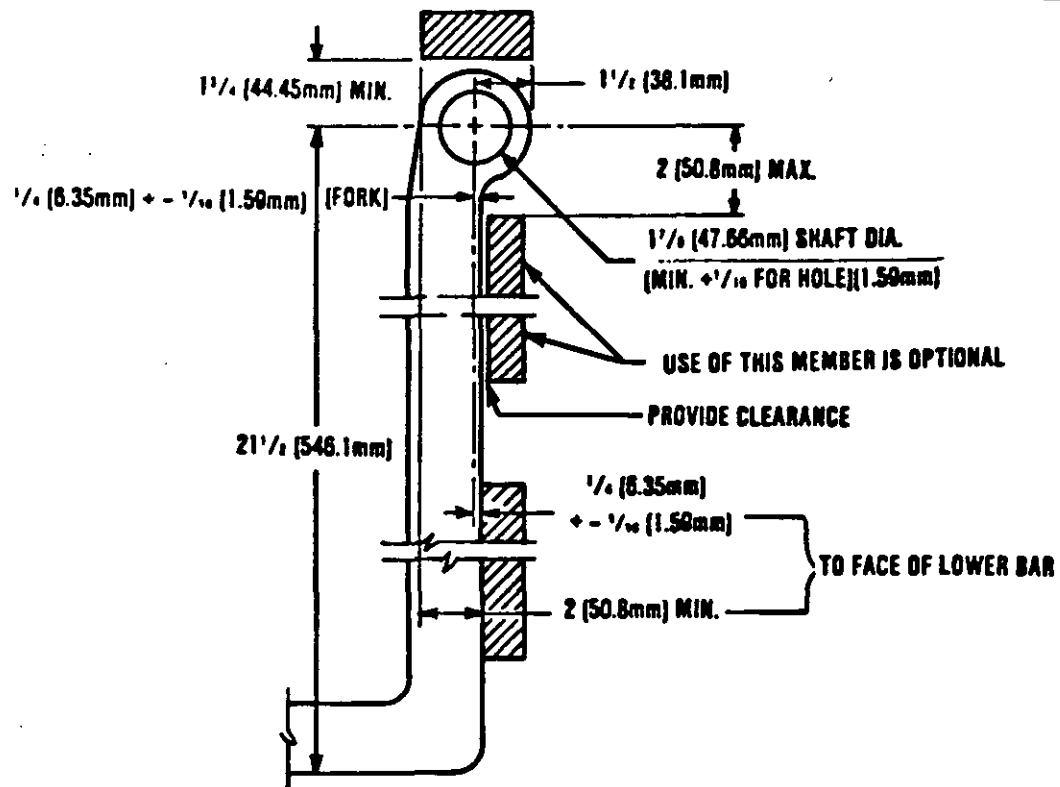


NOTE: — When Government drawings, specifications, or other data are used for any purpose other than in connection with a definitely related Government procurement operation, the United States Government thereby incurs no responsibility nor any obligation whatsoever, and the fact that the Government may have furnished for operation, or in any way supplied the said drawings, specifications, or other data is not to be regarded by implication or otherwise as in any manner endorsing the holder or any other person or corporation, or conveying any rights or permission to manufacture, use, or sell any patented invention that may in any way be related thereto.

This military standard is approved by the Department of Defense and is mandatory on all activities. Selection for all new engineering and design applications and for repetitive use shall be made from this document.

FED. SUP CLASS  
3930



SIDE ELEVATION



DETERMINED BY MAXIMUM  
DESIRED FORK SPREAD  
FRONT ELEVATION

NOTES

1. THE MANUFACTURERS SELECTED DESIGN SHALL PROVIDE FOR LATERAL RETENTION OF THE FORKS AT THE SPACINGS INDICATED ABOVE
2. FORK WIDTH SHALL BE IN ACCORDANCE WITH SPECIFICATIONS
3. RETENTION SPACING (B) TO BE 2 INCHES (50.8mm)

PA NAVY - SA  
OTHER CUST REVIEW:  
GL/MO/B4/SH  
USER: MO/MC

PROCUREMENT SPECIFICATION  
FOR FSC 3520 FORK LIFT TRUCK

TITLE  
SHAFT TYPE FORK MOUNTING FOR  
TRUCKS OF 6000 (2721.54kg) POUNDS CAPACITY  
BASED ON 24" (609.6mm) LOAD CENTER

SUPERSEDES: REVISION OF 19 SEPT. 1961

MILITARY STANDARD

MS 16959

SHEET 1 OF 1

APPROVED 19 Sep 1961 A REVISED 1 March 1965