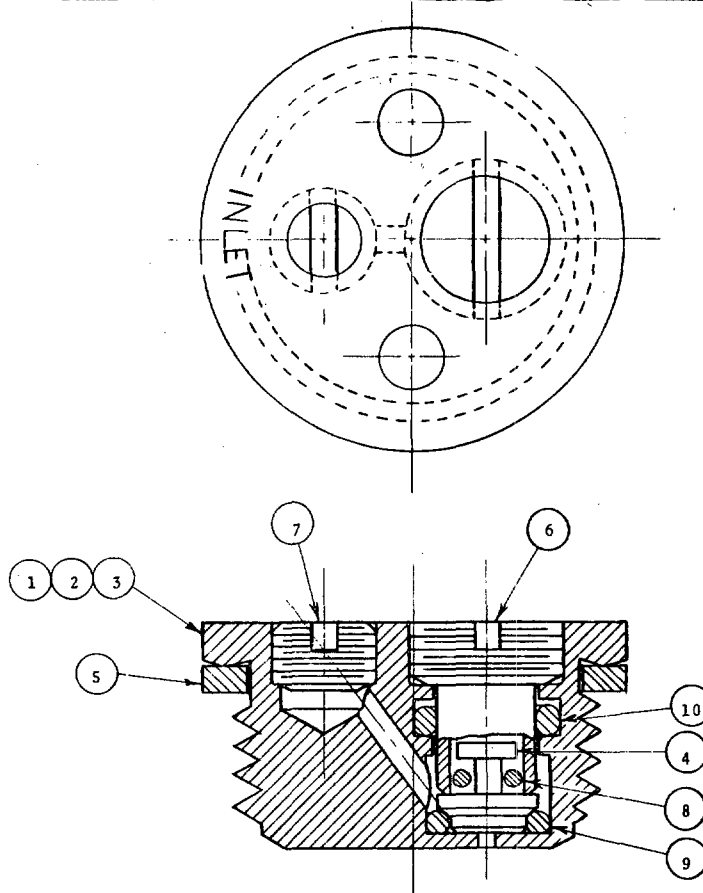


FED. SUP CLASS
4820

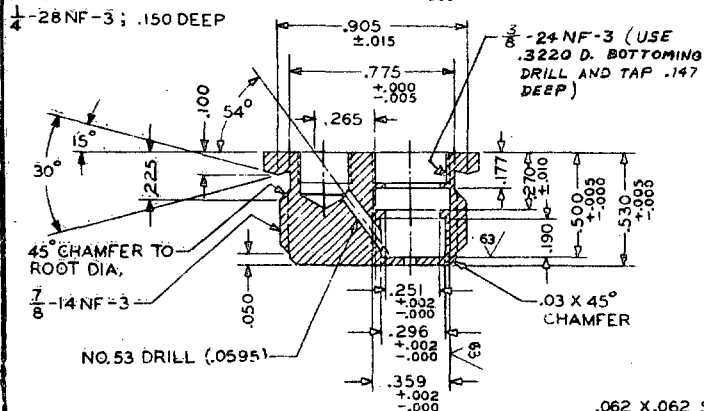
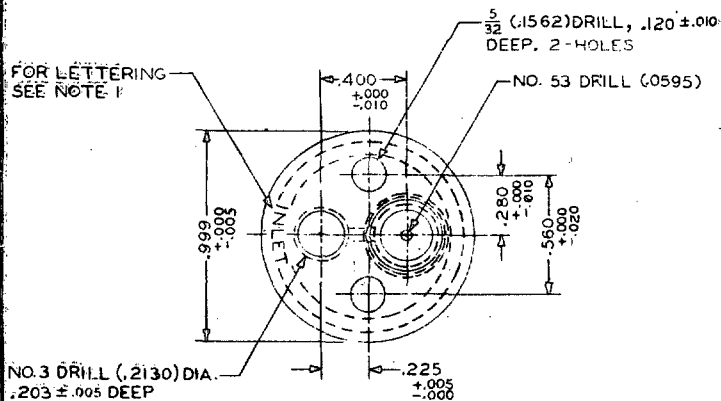
QTY PER MS PART NUMBER			MATERIAL LIST		
MS- 16858-3	MS- 16858-2	MS- 16858-1	PIECE NO.	MATERIAL	MATERIAL SPECIFICATION
-	-	1	1	CRES	QQ-S-763, CLASS 310
-	1	-	2	BRASS	QQ-B-637 COPPER ALLOY NO. 462
1	-	-	3	ACETAL PLASTIC	L-P-392 TYPE 1 CL 2
1	1	1	4	CRES	QQ-S-763, CLASS 310
1	1	1	5	RUBBER	MIL-R-900
1	1	1	6	CRES	QQ-S-763, CLASS 310
1	1	1	7	CRES	QQ-S-763, CLASS 310
2	2	2	8	CRES	QQ-S-763, CLASS 310
1	1	1	9	"O" RING	AN 6227-3
1	1	1	10	"O" RING	AN 6227-5

NOTES:

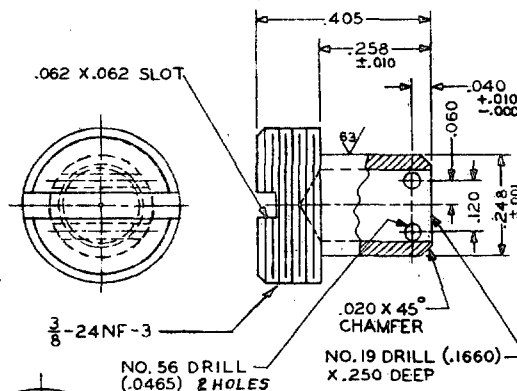
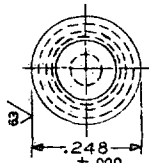
1. LETTERING SHALL BE ENGRAVED .005 INCH WIDE X .094 INCH HIGH X .005 INCH DEEP. ENGRAVING SHALL BE FILLED WITH ENAMEL MEETING THE REQUIREMENTS OF SPECIFICATION TT-E-496. BLACK ENAMEL SHALL BE USED FOR PIECES 1 AND 2 AND WHITE ENAMEL SHALL BE USED FOR PIECE 3.
2. DIMENSIONS ARE IN INCHES. UNLESS OTHERWISE SPECIFIED, TOLERANCES SHALL BE: DECIMALS $\pm .005$; FRACTIONS $\pm 1/64$; ANGLES $\pm 1/2$ DEGREE.
3. THIS STANDARD TAKES PRECEDENCE OVER DOCUMENTS REFERENCED HEREIN.
4. REFERENCED DOCUMENTS SHALL BE OF THE ISSUE IN EFFECT ON DATE OF INVITATION FOR BIDS.

(A) ENTIRE STANDARD REVISED

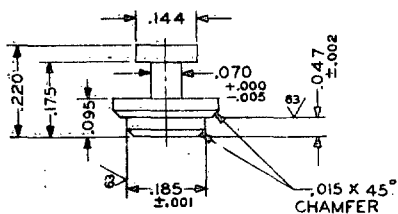
P.A. SH Other Cust	TITLE VALVE, GAS INLET; NONMAGNETIC	MILITARY STANDARD MS16858 (SH)
PROCUREMENT SPECIFICATION NONE	SUPERSEDES:	SHEET 1 OF 2

FED. SUP. CLASS.
4820.FOR LETTERING
SEE NOTE 1

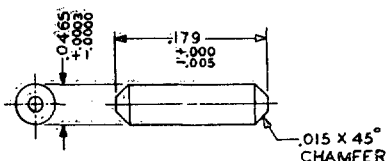
① ② ③ VALVE BODY



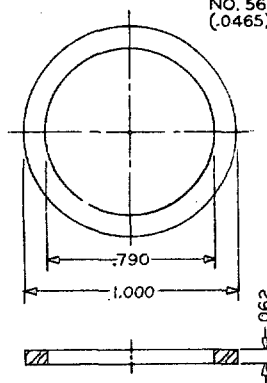
⑥ VALVE SCREW



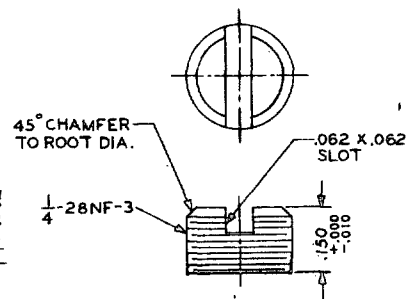
④ RING PLUG



⑧ PIN



⑤ GASKET



⑦ INLET PLUG

Inches	MM	Inches	MM
.0003	.01	.185	4.70
.001	.025	.190	4.83
.002	.05	.203	5.16
.005	.13	.2130	5.41
.010	.25	.220	5.59
.015	.38	.225	5.72
.020	.51	.248	6.30
.030	.76	.250 (1/4)	6.35
.040	1.02	.251	6.38
.046	1.17	.258	6.55
.0465	1.18	.265	6.73
.047	1.19	.270	6.86
.050	1.27	.280	7.11
.0595	1.51	.296	7.52
.060	1.52	.359	9.12
.062	1.57	.375 (3/8)	9.52
.0625 (1/16)	1.59	.400	10.16
.070	1.78	.405	10.29
.094	2.39	.468	11.89
.095	2.41	.500	12.70
.100	2.54	.530	13.46
.120	3.05	.560	14.22
.144	3.66	.775	19.68
.147	3.73	.790	20.07
.150	3.81	.875 (7/8)	22.22
.1562	3.97	.905	22.99
.1660	4.22	.999	25.37
.175	4.44	1.000	25.40
.177	4.50		
.179	4.55		

This military standard is approved for use by the Naval Sea Systems Command, and is available for use by all Departments and Agencies of the Department of Defense.

APPROVED: 6 Mar 1959 REVISED: ② For changes see page 1

P.A. :SH

Other Cust

TITLE

VALVE; GAS INLET; NONMAGNETIC

MILITARY STANDARD

MS16858 (SH)

PROCUREMENT SPECIFICATION
NONE

SUPERSEDES:

SHEET 2 OF 2