

This standard has been approved by the Naval Ship Engineering Center, Department of the Navy and is mandatory for use by that activity. All other military activities are required to employ this standard where suitable.

MS part number		Switch neck height A	Total height B	Usage	Federal Stock Number
MS16656-1		1/4	1-3/8	General	5930-644-3039
MS16656-2		1/2	1-7/8	MIL-F-16377/53	5930-088-4675

**REQUIREMENTS:**

- Characteristics:
  - Rating 3 amps. 250 volts
  - Poles Single
  - Action On-off
  - Material of box Molded or laminated phenolic
- Two switches for each 1000 switches or fraction thereof furnished on each Government order and two switches for each 1000 switches or fraction thereof, purchased by shipbuilding contractors for installation on ships shall be tested for 6,000 operations under rated load and voltage and shall withstand this test without failure of any part thereof.
- On watertight applications where boot is used the "ON" "OFF" indicator plate cannot be used.
- Minor variations in manufacture from that shown are acceptable.
- Commercial tolerances acceptable.
- To increase safety, switch operating handle shall be pinned to the neck of the switch by a metal pin in the approximate position shown.
- Screw-thread Handbook H28 applies.
- Fire Underwriter's approval required.

**NOTES:**

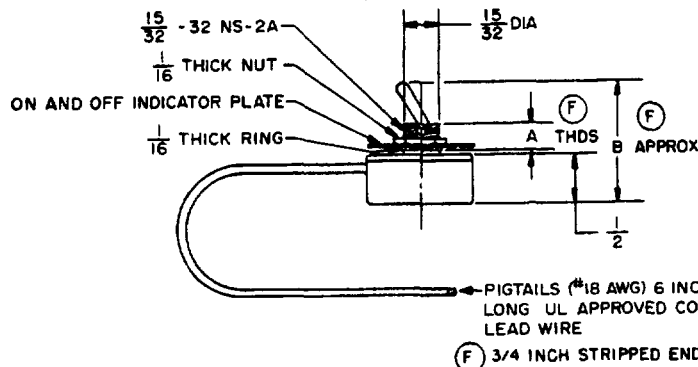
- For design feature purposes, this standard takes precedence over procurement documents referenced herein.
- Referenced documents shall be of the issue in effect on date of invitations for bid.

(F) Denotes changes.  
(Project 5930-N361)

P A SHIPS	TITLE	MILITARY STANDARD
Other Cust	Switch, Toggle, Single Pole, Single Throw	MS16656(SHIPS)
Procurement Specification NONE	SUPERSEDES: DRAWING 9000-S6401-73939, Pc. 11	SHEET 1 OF 1

DD FORM 1 SEP 57 672N

LIMITED COORDINATION PREVIOUS EDITIONS OF THIS FORM ARE OBSOLETE

FED SUP CLASS  
5930(F)  
METAL PIN THROUGH  
ACTUATING HANDLE  
AND NECK  
SEE NOTE 6

22 February 1972

11 March 1966

12 November 1961

REVISED

APPROVED 23 April 1958

SPECIFICATION ANALYSIS SHEET		Form Approved Budget Bureau No 119-R004
<p style="text-align: center; margin: 0;"><u>INSTRUCTIONS</u></p> <p style="font-size: small; margin: 0;">This sheet is to be filled out by personnel either Government or contractor, involved in the use of the specification in procurement of products for ultimate use by the Department of Defense. This sheet is provided for obtaining information on the use of this specification which will insure that suitable products can be procured with a minimum amount of delay and at the least cost. Comments and the return of this form will be appreciated. Fold on lines on reverse side, staple in corner, and send to preparing activity (as indicated on reverse hereof). Fold on</p>		
SPECIFICATION		
ORGANIZATION (Of submitter)		CITY AND STATE
CONTRACT NO	QUANTITY OF ITEMS PROCURED	DOLLAR AMOUNT \$
MATERIAL PROCURED UNDER A		
<input type="checkbox"/> DIRECT GOVERNMENT CONTRACT <input type="checkbox"/> SUBCONTRACT		
1 HAS ANY PART OF THE SPECIFICATION CREATED PROBLEMS OR REQUIRED INTERPRETATION IN PROCUREMENT USE? A. GIVE PARAGRAPH NUMBER AND WORDING		
B. RECOMMENDATIONS FOR CORRECTING THE DEFICIENCIES.		
2 COMMENTS ON ANY SPECIFICATION REQUIREMENT CONSIDERED TOO RIGID		
3 IS THE SPECIFICATION RESTRICTIVE? <input type="checkbox"/> YES <input type="checkbox"/> NO IF "YES", IN WHAT WAY?		
4. REMARKS (Attach any pertinent data which may be of use in improving this specification. If there are additional papers, attach to form and place both in an envelope addressed to preparing activity)		
SUBMITTED BY (Printed or typed name and activity)		DATE

DD FORM 1426  
1 APR 63

REPLACES NAVSHIPS FORM 4863 WHICH IS OBSOLETE

O 101-807-2000

FOLD

DEPARTMENT OF THE NAVY  
Naval Ship Engineering Center  
Center Building  
Prince George's Center  
Hyattsville, Maryland 20782

POSTAGE AND FEES PAID  
NAVY DEPARTMENT

OFFICIAL BUSINESS

Commander, Naval Ship Engineering Center  
DOD Standardization Program & Documents Branch  
Center Building  
Prince George's Center  
Hyattsville, Maryland 20782

FOLD