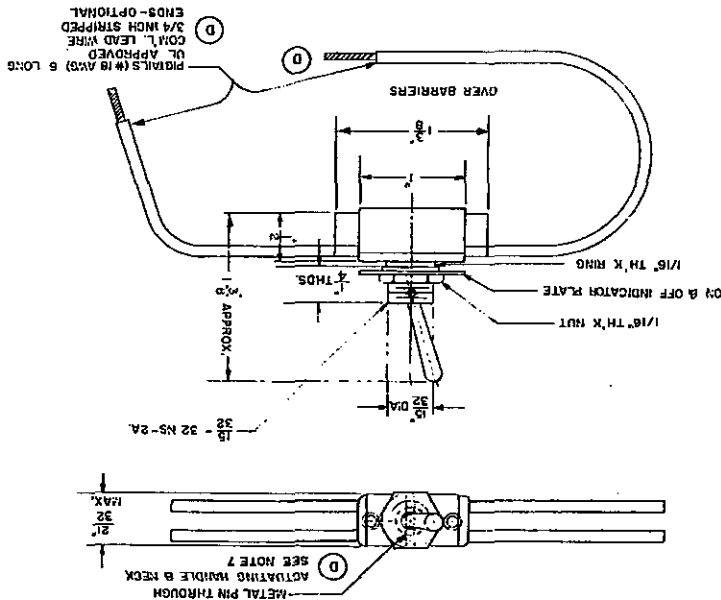


FED. SUP CLASS  
5930

## REQUIREMENTS:

1. Switches shall be 3 amperes, 250 volt, double pole, "on-off" action.
2. Material of the box shall be molded or laminated phenolic.
3. Two switches for each 1,000 switches or fraction thereof furnished on each Government order and two switches for each 1,000 switches or fraction thereof purchased by ship building contractors for installations on ships shall be tested for 6,000 operations under rated load and voltage, and shall withstand this test without failure of any part thereof.
4. Commercial tolerances acceptable.
5. Screw-thread Handbook H28 applies.
6. Fire Underwriter's approval required.
7. To increase safety, switch operating handle shall be pinned to the neck of the switch by a metal pin in the approximate position shown.
8. On watertight applications where boot is used the "on-off" indicator plate cannot be used.
9. Minor variations in manufacture from that shown are acceptable.

## NOTES:

1. For design feature purposes, this standard takes precedence over procurement documents referenced herein.
2. Referenced documents shall be of the issue in effect on date of invitations for bid.

D

MS part No.	Federal Stock Number
MS16569-1	5930-719-9659

D

Denotes changes.

(Project 5930-N360)

P.A. SHIPS	TITLE	MILITARY STANDARD
Other Cust	D Switch, Toggle, Double Pole, Single Throw (For Use In Lighting Fixtures)	MS 16569(SHIPS)
Procurement Specification NONE	SUPERSEDES:	SHEET 1 OF 1

DD FORM 672N  
1 SEP 57LIMITED PREVIOUS EDITIONS OF THIS FORM ARE OBSOLETE.  
COORDINATION

This standard has been approved by the Naval Ship Engineering Center, Department of the Navy and is mandatory for use by that activity. All other military activities are required to employ this standard where suitable.

APPROVED 4 November 1957 REVISED 11 March 1966 22 February 1972