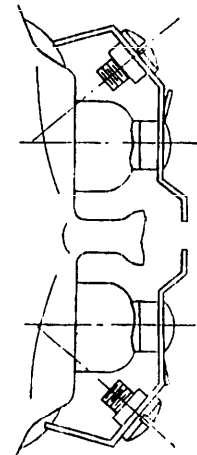
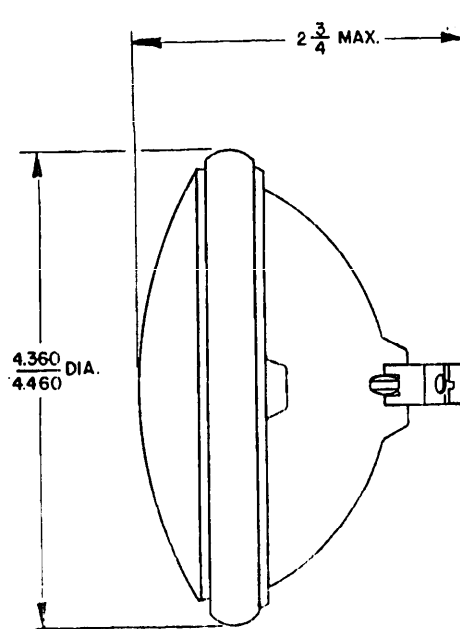


NOTICE—When Government drawings, specifications, or other data are used for any purpose other than in connection with a definitely related Government procurement operation, the United States Government thereby incurs no responsibility, nor any obligation whatsoever; and the fact that the Government may have formulated, furnished, or in any way supplied the said drawings, specifications, or other data is not to be regarded by implication or otherwise as in any manner licensing the holder or any other person or corporation, or conveying any rights or permission to manufacture, use, or sell any patented invention that may in any way be related thereto.

This military standard is approved by the Department of Defense and is mandatory on all activities. Selection for all new engineering and design applications and for repetitive use shall be made from this document.



BASE TERMINAL

MS PART NUMBER	DESIGN VOLTS	MAX. AMPS	INITIAL MAX. BEAM CANDLE-POWER (APPROX)	FILAMENT CONST.	BEAM SPREAD IN DEGREES (APPROX)		HOURS LIFE APPROX	INDUSTRY NUMBER	FINISH	USE
					HOR.	VERT.				
MS16524-2	4.7	0.5	6,300	C-2R	3	3	100	4546	ROUNDED	HAND LANTERN

D ENTIRE STANDARD REVISED

PROJECT 6240-0076

P.A. SHIPS	TITLE	MILITARY STANDARD
Other Cust MC ASD	LAMP, INCANDESCENT, PAR-36, SCREW TERMINAL	MS 16524
PROCUREMENT SPECIFICATION NONE	SUPERSEDES:	SHEET 1 OF 1

APPROVED 4 Dec 1957 REVISED D 22 April 1963

FED. SUP CLASS
6240