

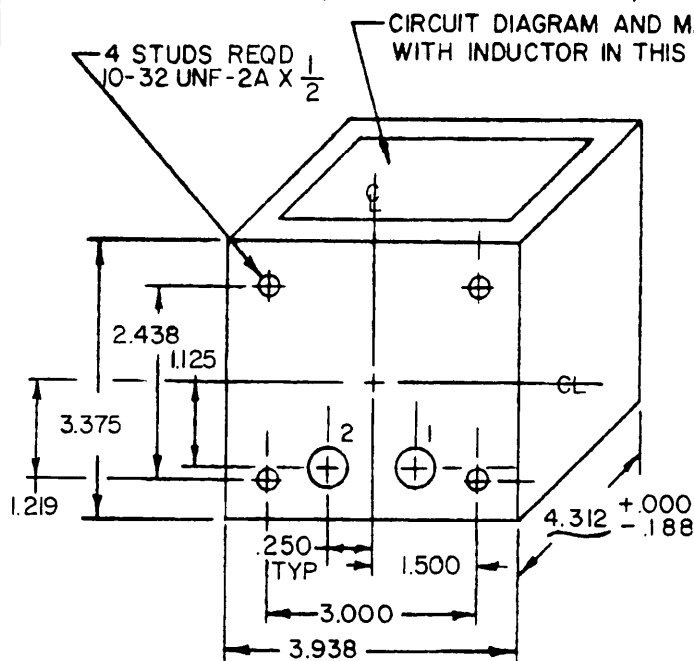
User activities: Army - MI
Navy - MC, CG
Air Force - 19, 14

Review activities: Army - AR
Navy -
Air Force - 11, 17

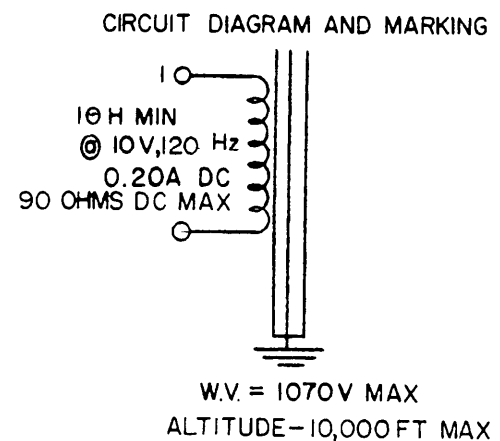
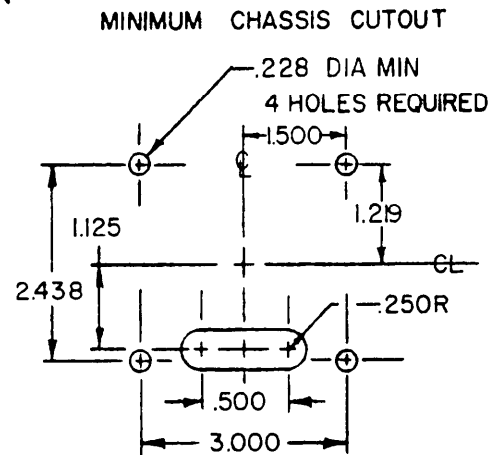
is military standard is approved for use by all Departments and Agencies of the
partment of Defense. Selection for all new engineering and design applications
d for repetitive use shall be made from this document when applicable.

CASE, MOUNTING, TERMINAL ARRANGEMENT, AND MARKING

FED. SUP CLASS
5950



INCHES	MM
.188	4.78
.228	5.79
.250	6.35
$\frac{1}{2}$	12.70
.500	12.70
.750	19.05
1.219	30.96
2.438	61.93
3.000	76.20
3.375	85.73
3.938	100.03
4.312	109.52



THIS MILITARY STANDARD INACTIVE FOR NEW DESIGN AFTER 23 JUNE 1981
NO SUPERSEDING STANDARD

NOTES:

1. All dimensions in inches.
2. Metric equivalents are given for general information only and are based upon 1 inch = 25.4 mm.
3. Unless otherwise specified, tolerance on case dimensions is $\pm .000$ (.00 mm), $\pm .125$ (3.18 mm).
4. Tolerance on mounting dimensions is $\pm .016$ (.41 mm). Mounting studs are symmetrically located with respect to the centerline of the case.
5. Tolerance on terminal position dimensions is $\pm .031$ (.79 mm). Terminals fit within minimum chassis cutout.
6. Type designation, MS part number and manufacturer's name or symbol to be marked on side opposite terminals.
7. Referenced document shall be of the issue in effect on date of invitation for bids.
8. This standard takes precedence over document referenced herein.

© denotes changes

MS PART NO.	TYPE DESIGNATION
MS16469-1	TF4RX04KB211

P.A EC	International interest	TITLE INDUCTOR, POWER, TYPE TF4RX04KB211	MILITARY STANDARD
Other Cust AF-85			MS16469
Procurement Specification MIL-T-27		SUPERSEDES:	PAGE 1 OF 2

FED. SUP CLASS
5950User activities: Army -
Navy -
Air Force -Review activities: Army -
Navy -
Air Force -

This military standard is approved for use by all Departments and Agencies of the Department of Defense. Selection for all new engineering and design applications and for repetitive use shall be made from this document when applicable.

ELECTRICAL RATING

Inductance	10 h min	Duty cycle	Continuous
Current	0.20 amp dc	Life expectancy	10,000 hr min
Voltage	10 v rms	Working voltage	1,070 v max
Frequency	120 Hz	Altitude	10,000 feet max
DC resistance	90 ohms max	Operating temperature	105° C max

Note: When numbers in parentheses, eg (1-2) are used, they indicate the winding and the extreme terminals of the winding.

PHYSICAL CHARACTERISTICS

Case size	KB
Weight	7.5 lb max
Terminals	Turret, standoff type
Terminal height	0.625 (15.88 mm) max
Shock	Method 1, test condition C (50G)

TEST		ELECTRICAL PROPERTIES		LIMITS
Dielectric withstanding voltage: At sea level	Winding	(1-2)	---	
	Volts rms	2,500		
Inductance	With 10 v rms, 120 Hz, and 0.20 amp dc applied to (1-2): 10 h			Min
DC resistance	(1-2): 90 ohms			Max
Temperature rise	40° C with 10 v rms, 120 Hz, 0.20 amp dc applied to (1-2) at an ambient temperature of 65° C			Max

C

Quality assurance provisions:

Qualification inspection: Not applicable for this specification.

Quality conformance inspection: Group A and B test of MIL-T-27 shall be applicable.

P.A. EC	International interest	TITLE	MILITARY STANDARD
Other Cust AF-85		INDUCTOR, POWER, TYPE TF4RX04KB211	MS16469
Procurement Specification MIL-T-27		SUPERSEDES:	PAGE 2 OF 2