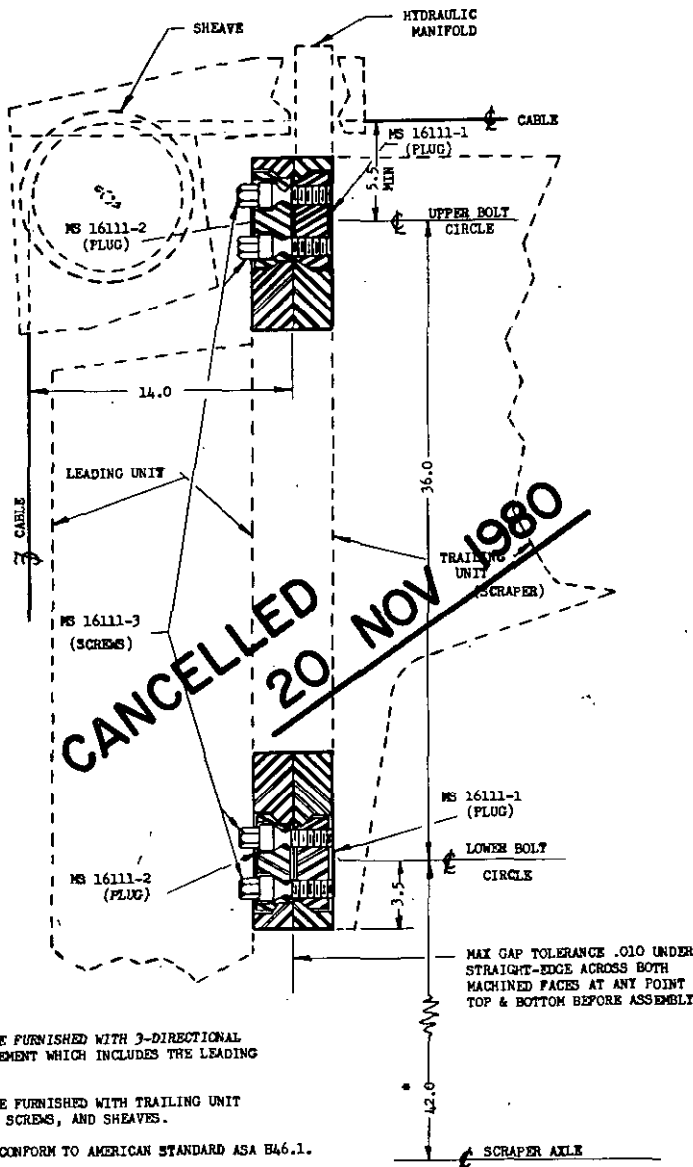


Review activity: Army - AF  
User activity: Army - CE

FED. SUP CLASS  
3805



NOTES:-

1. TRACTOR SHALL BE FURNISHED WITH 3-DIRECTIONAL KING-FIN ARRANGEMENT WHICH INCLUDES THE LEADING UNIT FLANGES.
2. SCRAPER SHALL BE FURNISHED WITH TRAILING UNIT FLANGES, PLUGS, SCREWS, AND SHEAVES.
3. FINISH SYMBOLS CONFORM TO AMERICAN STANDARD ASA B46.1.
4. ALL DIMENSIONS ARE IN INCHES.

MS PART NO.	SHEET NO.	NO. REQD FOR ASSEMBLY
(PLUG) MS 16111-1	4 OF 5	4
(PLUG) MS 16111-2	4 OF 5	4
(SCREW) MS 16111-3	4 OF 5	16

\*MEASURED WITH SCRAPER UNLOADED AND WITH CUTTING EDGE 8 INCHES ABOVE GROUND LEVEL.

GENERAL ARRANGEMENT

This military standard is mandatory for use by all Departments and Agencies of the Department of Defense. Selection for all new engineering and design applications and for repetitive use shall be made from this document.

P.A. NAVY(YD) Other Cust ARMY - ME AIR FORCE - 84	TITLE  COUPLER, UNIVERSAL 14 AND 18 CU YD SCRAPER	MILITARY STANDARD <b>MS 16111</b>
PROCUREMENT SPECIFICATION	SUPERSEDES: MS 16111 C	SHEET 1 OF 5

DD FORM 672-1

PREVIOUS EDITIONS OF THIS FORM ARE OBSOLETE.

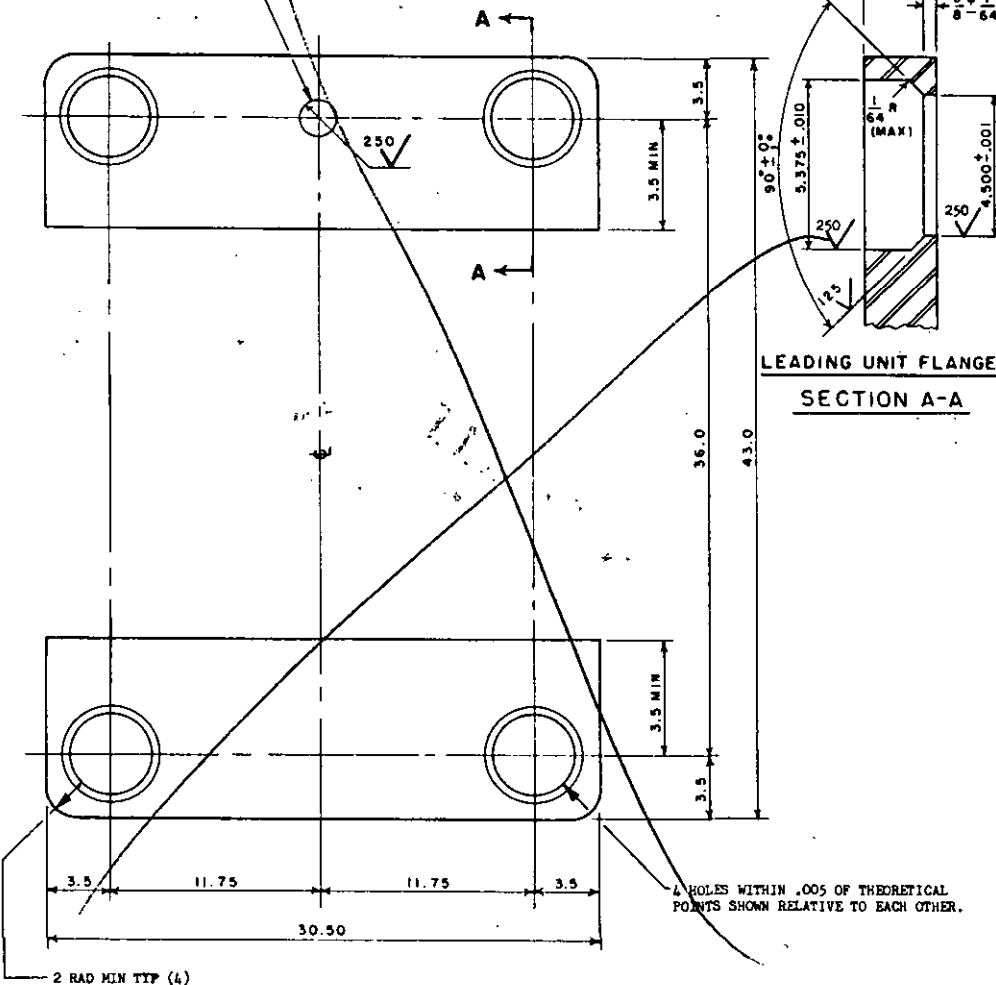
APPROVED 13 JAN 1956 REVISED 7 JAN 1958 15 NOV 1960 4 NOV 1966 21 Jan 1976 20 Nov 1980

11870  
1267

Review activity: Army - AT  
User activity: Army - CE

This military standard is mandatory for use by all Departments and Agencies of the Department of Defense. Selection for all new engineering and design applications and for repetitive use shall be made from this document.

2.00  $\pm$  .020  
DIA THROUGH HOLE  
LOCATED WITHIN .010 OF TRUE  
POSITION RELATIVE TO OTHER  
HOLES.



### LEADING UNIT FLANGE

ALL DIMENSIONS ARE IN INCHES

P.A. NAVY (YD)	TITLE	MILITARY STANDARD
Other Cust		
Army - ME	COUPLER, UNIVERSAL 14 AND 18 CU YD SCRAPER	MS 16111
Air Force - 84		
PROCUREMENT SPECIFICATION	SUPERSEDES: MS 16111 C	SHEET 2 OF 5

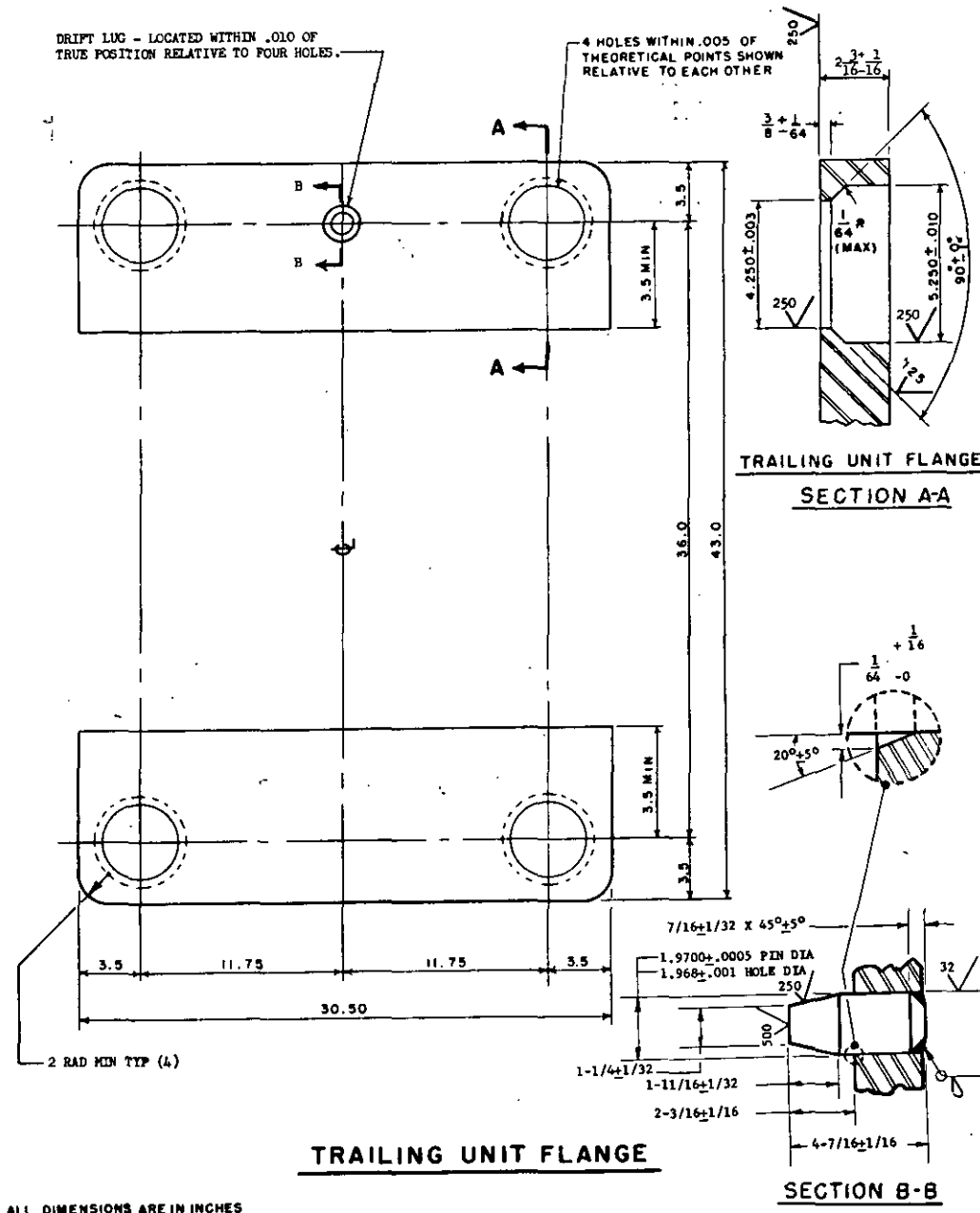
DD FORM 672-1

PREVIOUS EDITIONS OF THIS FORM ARE OBSOLETE.

APPROVED 13 JAN 1956 REVISED (A) 7 JAN 1958 (B) 15 NOV 1960 (C) 4 NOV 1966 (D) 21 JAN 1976

This military standard is mandatory for use by all Departments and Agencies of the Department of Defense. Selection for all new engineering and design applications and for repetitive use shall be made from this document.

Review activity: Army - AT  
User activity: Army - CE



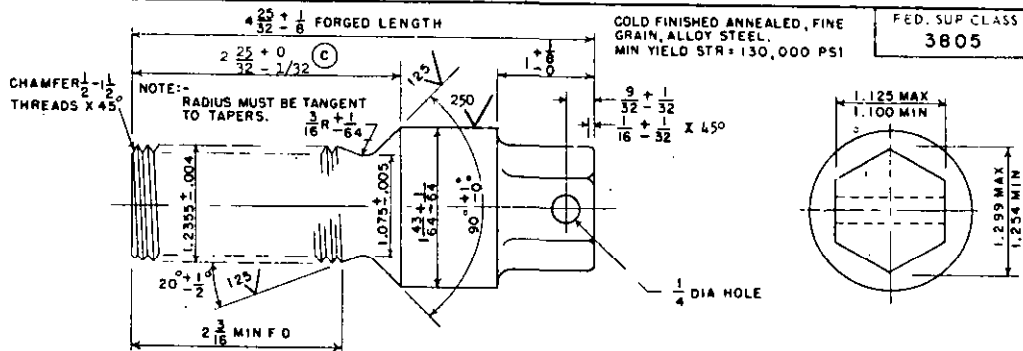
P.A. NAVY (YD) Other Cust ARMY - MS AIR FORCE - 84	TITLE COUPLER, UNIVERSAL 14 AND 18 CU YD SCRAPER	MILITARY STANDARD <b>MS16111</b>
PROCUREMENT SPECIFICATION	SUPERSEDES: MS16111C	SHEET 3 OF 5

DD FORM 672-1

PREVIOUS EDITIONS OF THIS FORM ARE OBSOLETE.

APPROVED 13 JAN 1956 REVISED (A) 7 JAN 1958 (B) 15 NOV 1960 (C) 4 NOV 1966 (D) 21 Jan 1976

Review activity: Army - AT  
User activity: Army - CE



1-1/4 - 7 UNC - 2A THREAD.

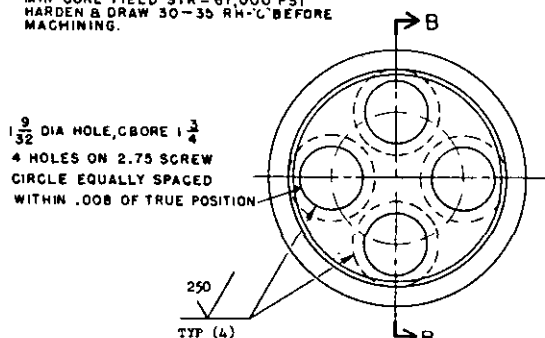
CAPSCREWS MUST BE TIGHTENED TO 1400 FT LB TORQUE.

HARDEN & TEMPER 35 - 40 RH - "C".

### CAP SCREW

PART MS 16111 - 3

HOT ROLLED OPEN HEARTH, SPECIAL QUALITY KILLED STEEL.  
MIN YIELD STR = 90,000 PSI AT INTERNAL BEVEL  
MIN CORE HARDNESS = 200 BHN.  
MIN CORE YIELD STR = 67,000 PSI  
HARDEN & DRAW 30-35 RH-"C" BEFORE MACHINING.



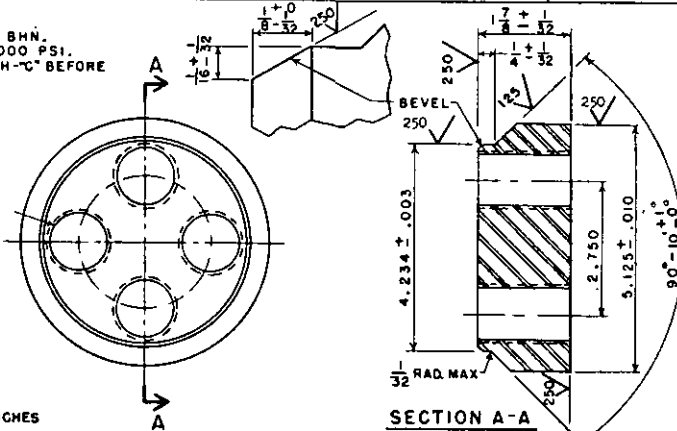
### TAPERED PLUG FOR LEADING UNIT FLANGE

PART MS 16111 - 2

SPECIAL QUALITY STEEL.  
MIN CORE HARDNESS = 200 BHN.  
MIN CORE YIELD STR = 67,000 PSI.  
HARDEN & DRAW 30-35 RH-"C" BEFORE MACHINING.

1-7/64 DIA - 4 HOLES.  
WITHIN .010 OF POINTS SHOWN.  
1-1/4 - 7 UNC - 2B THREAD.

ALL DIMENSIONS ARE IN INCHES



### TAPERED PLUG FOR TRAILING UNIT FLANGE

PART MS 16111 - 1

P.A. NAVY (YD)	TITLE	MILITARY STANDARD
Other Cust		MS 16111
ARMY - ME	COUPLER, UNIVERSAL 14 AND 18 CU YD SCRAPER	
AIR FORCE - 84		
PROCUREMENT SPECIFICATION	SUPERSEDES:	SHEET 4 OF 5
	MS16111C	

DD FORM 672-1

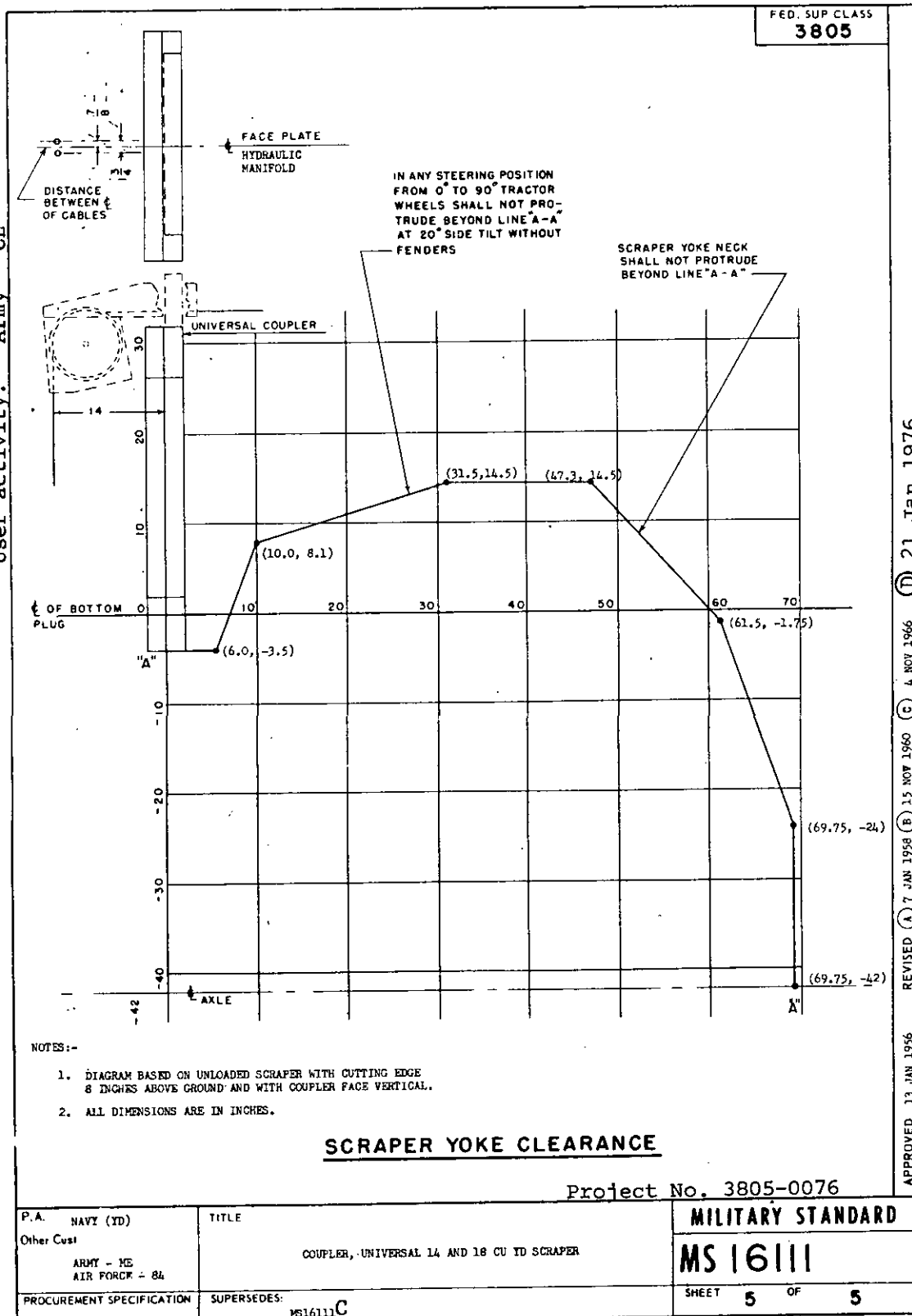
PREVIOUS EDITIONS OF THIS FORM ARE OBSOLETE.

APPROVED 13 JAN 1956 REVISED 7 JAN 1958 15 NOV 1960 4 NOV 1966 21 Jan 1976

This military standard is mandatory for use by all Departments and Agencies of the Department of Defense. Selection for all new engineering and design applications and for repetitive use shall be made from this document.

Review activity: Army - AT  
User activity: Army - CE

This military standard is mandatory for use by all Departments and Agencies of the Department of Defense. Selection for all new engineering and design applications and for repetitive use shall be made from this document.



DD FORM 672-1

PREVIOUS EDITIONS OF THIS FORM ARE OBSOLETE.

\* U.S. GOVERNMENT PRINTING OFFICE: 1976-603-766:2684

APPROVED 13 JAN 1956 REVISED (A) 7 JAN 1958 (B) 15 NOV 1960 (C) 4 NOV 1966 (D) 21 JAN 1976