

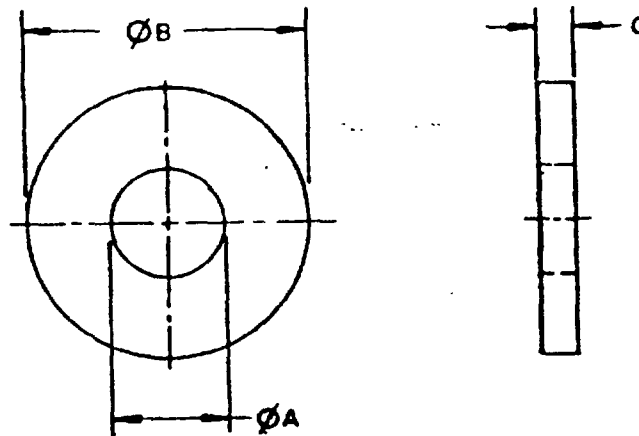
FED. SUP CLASS
5310

TABLE 1. DASH NUMBERS AND DIMENSIONS. S/

DASH NO OR C/	Ø A	TOLERANCE		Ø B	TOLERANCE		C THICKNESS BASIC	LIMITS	
		+	-		+	-		MAX	MIN
801	.078	.000	.005	.188	.000	.005	.020	.025	.016
844	.094	.005	.000	.218	.000	.010	.020	.022	.018
802	.094	.000	.005	.250	.000	.005	.020	.025	.016
803 S/	.125	.000	.005	.250	.000	.005	.022	.028	.017
804 S/	.125	.008	.005	.312	.008	.005	.032	.040	.025
805 S/	.156	.008	.005	.312	.008	.005	.035	.048	.027
806	.156	.008	.005	.375	.015	.005	.049	.065	.036
845	.172	.000	.005	.281	.000	.005	.031	.039	.029
856	.172	.000	.005	.312	.000	.005	.031	.039	.029
807 S/	.188	.008	.005	.375	.015	.005	.049	.065	.036
841	.188	.008	.005	.438	.015	.005	.049	.065	.036
846	.203	.007	.000	.375	.000	.007	.020	.021	.019
847	.203	.005	.005	.562	.010	.010	.032	.035	.029
848	.203	.010	.008	.562	.010	.010	.063	.069	.057
849	.203	.010	.010	.625	.010	.010	.040	.045	.035
857	.203	.010	.000	.734	.030	.010	.035	.045	.025
850	.203	.004	.000	1.062	.000	.015	.020	.023	.017
808 S/	.219	.008	.005	.438	.015	.005	.049	.065	.036
842	.219	.008	.005	.500	.015	.005	.049	.065	.036
809	.250	.015	.005	.562	.015	.005	.065	.080	.051
851	.250	.015	.005	.688	.010	.010	.070	.075	.065
852	.266	.004	.004	.625	.015	.015	.032	.036	.026
853	.266	.005	.005	.688	.010	.005	.050	.054	.046
858	.266	.000	.010	.458	.010	.020	.036	.046	.028
810	.281	.015	.005	.625	.015	.005	.065	.080	.051
854	.296	.000	.006	.438	.000	.008	.032	.035	.029
811	.312	.015	.005	.734	.015	.007	.065	.080	.051
812	.344	.015	.005	.688	.015	.007	.065	.080	.051
813	.375	.015	.005	.875	.030	.007	.083	.104	.064
814	.406	.015	.005	.812	.015	.007	.065	.080	.051
815	.438	.015	.005	1.000	.030	.007	.083	.104	.064
816	.469	.015	.005	.922	.015	.007	.065	.080	.051
817	.500	.015	.005	1.250	.030	.007	.083	.104	.064
818	.531	.015	.005	1.062	.030	.007	.095	.121	.074
855	.531	.015	.005	1.250	.030	.007	.100	.112	.090
819	.562	.015	.005	1.375	.030	.007	.109	.132	.086
843 S/	.594	.015	.005	1.469	.030	.007	.100	.112	.090
840 S/	.604	.015	.005	1.469	.030	.007	.100	.112	.090
820	.656	.030	.007	1.312	.030	.007	.095	.121	.074
821	.688	.030	.007	1.750	.030	.007	.134	.160	.108

© ENTIRE STANDARD REVISED

P. A. Other Cont.	AR AS 99	INTERNATIONAL INTEREST	TITLE WASHER, FLAT-METAL, ROUND GENERAL PURPOSE	MILITARY STANDARD MS 15795
PROCUREMENT SPECIFICATION FF-W-92		SUPERSEDES BEBX SERIES IN PART		PAGE 1 OF 8

DIS' TION STATEMENT A. Approved for public release; distribution is unlimited.

This standard is approved for use by all Departments and Agencies of the Department of Defense. Selection for all new engineering and design applications and for repetitive use shall be made from this document when applicable.

 USER ACTIVITIES:
 ARMY-ER, ME
 NAVY-MC, SH
 REVISE TIVITIES:
 ARMY AT, AV, MI
 AIR FORCE - II
 DLA - IS
 NSA - NS

FED. SUP. CLASS
5310

TABLE I. DASH NUMBERS AND DIMENSIONS. - CONTINUED

DASH NO CRES-1	ØA	TOLERANCE		ØB	TOLERANCE		C THICKNESS BASIC	LIMITS	
		+	-		+	-		MAX	MIN
822	.812	.030	.007	1.469	.030	.007	.134	.160	.108
823	.812	.030	.007	2.000	.030	.007	.148	.177	.122
824	.938	.030	.007	1.750	.030	.007	.134	.160	.108
825	.938	.030	.007	2.250	.030	.007	.165	.192	.136
826	1.062	.030	.007	2.000	.030	.007	.134	.160	.108
827	1.062	.030	.007	2.500	.030	.007	.165	.192	.136
828	1.250	.030	.007	2.750	.030	.007	.165	.192	.136
829	1.375	.030	.007	3.000	.030	.007	.165	.192	.136
830	1.500	.045	.010	3.250	.045	.010	.180	.213	.153
831	1.625	.045	.010	3.500	.045	.010	.180	.213	.153
832	1.750	.045	.010	3.750	.045	.010	.180	.213	.153
833	1.875	.045	.010	4.000	.045	.010	.180	.213	.153
834	2.000	.045	.010	4.250	.045	.010	.180	.213	.153
835	2.125	.045	.010	4.500	.045	.010	.180	.213	.153
836	2.375	.045	.010	4.750	.045	.010	.220	.248	.193
837	2.625	.045	.010	5.000	.045	.010	.238	.280	.210
838	2.875	.065	.010	5.250	.065	.010	.259	.310	.228
839	3.125	.065	.010	5.500	.065	.010	.284	.327	.249

- 1/ SEE INTERCHANGEABILITY TABLE
 2/ SELECTED SIZES TYPE A IN ACCORDANCE WITH ANSI B18.22.1
 3/ TYPE B IN ACCORDANCE WITH ANSI B18.22.1
 4/ NONSTANDARD. REMAINDER ARE PREFERRED SIZES TYPE A IN ACCORDANCE WITH ANSI B18.22.1
 5/ -B04 AND B04B REPLACED BY AN960-C4 AND -M04 RESPECTIVELY. MS15795-804 AND -804B WASHERS MAY BE USED UNTIL EXISTING STOCKS ARE DEPLETED.
 6/ SEE NOTE 4

TABLE II. DASH NUMBERS AND DIMENSIONS. 3/

DASH NO NICKEL-COPPER ALLOY	ØA	TOLERANCE		ØB	TOLERANCE		C THICKNESS BASIC	LIMITS	
		+	-		+	-		MAX	MIN
401	.078	.000	.005	.188	.000	.005	.020	.025	.016
402	.094	.000	.005	.250	.000	.005	.020	.025	.016
403	.125	.000	.005	.250	.000	.005	.022	.028	.017
404	.125	.008	.005	.312	.008	.005	.032	.040	.025
405	.156	.008	.005	.312	.008	.005	.035	.048	.027
406	.156	.008	.005	.375	.015	.005	.049	.065	.036
407	.188	.008	.005	.375	.015	.005	.049	.065	.036
441	.188	.008	.005	.438	.015	.005	.049	.065	.036
408	.219	.008	.005	.438	.015	.005	.049	.065	.036
442	.219	.008	.005	.500	.015	.005	.049	.065	.036
409	.250	.015	.005	.562	.015	.005	.065	.080	.051
444	.266	.000	.010	.688	.015	.005	.050	.054	.046
445	.281	.015	.005	.734	.015	.007	.063	.071	.056
410	.281	.015	.005	.625	.015	.005	.065	.080	.051
411	.312	.015	.005	.734	.015	.007	.065	.080	.051
412	.344	.015	.005	.688	.015	.007	.065	.080	.051
446	.344	.015	.005	.562	.010	.010	.062	.072	.052
447	.344	.000	.015	.875	.010	.010	.064	.070	.058
413	.375	.015	.005	.875	.030	.007	.083	.104	.064
414	.406	.015	.005	.812	.015	.007	.065	.080	.051
448	.406	.010	.005	.625	.010	.010	.065	.080	.051
415	.438	.015	.005	1.000	.030	.007	.083	.104	.064
416	.469	.015	.005	.922	.015	.007	.065	.080	.051
449	.500	.015	.005	.875	.020	.005	.064	.070	.058
417	.500	.015	.005	1.250	.030	.007	.083	.104	.064
418	.531	.015	.005	1.062	.030	.007	.095	.121	.074
419	.562	.015	.005	1.375	.030	.007	.109	.132	.086
443	.594	.015	.005	1.469	.030	.007	.100	.112	.090
440	.604	.015	.005	1.469	.030	.007	.100	.112	.090
420	.656	.030	.007	1.312	.030	.007	.095	.121	.074

APPROVED 2 JUN 54 REVISED (G) FOR CHANGES SEE PAGES 1 THRU 8

P. A. Other Cost	AR AS 99	INTERNATIONAL INTEREST	TITLE WASHER, FLAT-METAL, ROUND GENERAL PURPOSE	MILITARY STANDARD MS15795
PROCUREMENT SPECIFICATION FF-W-92		SUPERSEDES: BEBX SERIES IN PART		PAGE 2 OF 8

ARMY-ER, ME
NAVY-MC, SHARMY-AT, AV, MI
AIR FORCE-II
DLA-IS
NSA-NS

Selection for all new engineering and design applications and for replacement of obsolete shall be made from this document when applicable

FED SUP CLASS
5310

TABLE II. DASH NUMBERS AND DIMENSIONS - CONTINUED

DASH NO NICKEL-COPPER ALLOY	ϕA	TOLERANCE		ϕB	TOLERANCE		C THICKNESS BASIC	LIMITS	
		+	-		+	-		MAX	MIN
421	.688	.030	.007	1.750	.030	.007	.134	.160	.108
450	.688	.015	.015	1.187	.015	.015	.187	.197	.177
451	.688	.015	.005	1.500	.010	.010	.250	.265	.235
452	.750	.010	.010	1.000	.010	.010	.035	.040	.030
453	.781	.010	.010	1.500	.020	.005	.093	.101	.085
454	.812	.030	.007	1.312	.030	.007	.095	.121	.074
422	.812	.030	.007	1.469	.030	.007	.134	.160	.108
423	.812	.030	.007	2.000	.030	.007	.148	.177	.122
455	.875	.020	.000	1.500	.020	.005	.093	.101	.085
456	.938	.010	.010	1.750	.010	.010	.437	.452	.422
424	.938	.030	.007	1.750	.030	.007	.134	.160	.108
425	.938	.030	.007	2.250	.030	.007	.165	.192	.136
426	1.062	.030	.007	2.000	.030	.007	.134	.160	.108
427	1.062	.030	.007	2.500	.030	.007	.165	.192	.136
428	1.250	.030	.007	2.500	.030	.007	.165	.192	.136
429	1.375	.030	.007	3.000	.030	.007	.165	.192	.136
430	1.500	.045	.010	3.250	.045	.010	.180	.213	.153
431	1.625	.045	.010	3.500	.045	.010	.180	.213	.153
432	1.750	.045	.010	3.750	.045	.010	.180	.213	.153
433	1.875	.045	.010	4.000	.045	.010	.180	.213	.153
434	2.000	.045	.010	4.250	.045	.010	.180	.213	.153
435	2.125	.045	.010	4.500	.045	.010	.180	.213	.153
436	2.375	.045	.010	4.750	.045	.010	.220	.248	.193
437	2.625	.045	.010	5.000	.045	.010	.238	.280	.210
438	2.875	.065	.010	5.250	.065	.010	.259	.310	.228
439	3.125	.065	.010	5.500	.065	.010	.284	.327	.249

1/ SELECTED SIZES TYPE A IN ACCORDANCE WITH ANSI B18.22.1

2/ TYPE B IN ACCORDANCE WITH ANSI B18.22.1

3/ NONSTANDARD. REMAINDER ARE PREFERRED SIZES TYPE A IN ACCORDANCE WITH ANSI B18.22.1

4/ SEE NOTE 4

TABLE III. DASH NUMBERS AND DIMENSIONS. 5/

DASH NO BRASS	ϕA	TOLERANCE		ϕB	TOLERANCE		C THICKNESS BASIC	LIMITS	
		+	-		+	-		MAX	MIN
901	.078	.000	.005	.188	.000	.005	.020	.025	.016
902	.094	.000	.005	.250	.000	.005	.020	.025	.016
903	.125	.000	.005	.250	.000	.005	.022	.028	.017
904	.125	.008	.005	.312	.008	.005	.032	.040	.025
944	.141	.005	.000	.312	.010	.010	.028	.032	.024
945	.141	.008	.005	.406	.008	.005	.040	.045	.036
905	.156	.008	.005	.312	.008	.005	.035	.048	.027
906	.156	.008	.005	.375	.015	.005	.049	.065	.036
907	.188	.008	.005	.375	.015	.005	.049	.065	.036
941	.188	.008	.005	.438	.015	.005	.049	.065	.036
946	.203	.010	.010	.406	.010	.010	.040	.045	.036
947	.219	.000	.015	.469	.010	.010	.049	.065	.036
908	.219	.008	.005	.438	.015	.005	.049	.065	.036
942	.219	.008	.005	.500	.015	.005	.049	.065	.036
948	.250	.010	.000	.438	.005	.005	.016	.020	.013
949	.250	.010	.010	.500	.010	.010	.049	.065	.036
950	.266	.001	.006	.500	.010	.005	.109	.120	.100
909	.250	.015	.005	.562	.015	.005	.065	.080	.051
910	.281	.015	.005	.625	.015	.005	.065	.080	.051
911	.312	.015	.005	.734	.015	.007	.065	.080	.051
912	.344	.015	.005	.688	.015	.007	.065	.080	.051
913	.375	.015	.005	.875	.030	.007	.083	.104	.064
951	.375	.020	.000	.875	.005	.005	.040	.045	.035
952	.406	.000	.020	.688	.007	.003	.032	.034	.024
914	.406	.015	.005	.812	.015	.007	.065	.080	.051

P. A. Other Cost	AR AS 99	INTERNATIONAL INTEREST	TITLE WASHER, FLAT-METAL, ROUND GENERAL PURPOSE	MILITARY STANDARD MS15795
PROCUREMENT SPECIFICATION FF-W-92		SUPERSEDES BEBX SERIES IN PART		PAGE 3 OF 8

USER ACTIVITIES:

ARMY-ER,ME
NAVY-MC,SH

VITIES:

AV,MI

REVISED

ARMY
AIR FORCE
DLA-15
NSA-NS

This material is approved for use by all Departments and Agencies of the Department of Defense.

Selection of new engineering and design applications and for repetitive use shall be made from this document when applicable.

APPROVED 2 JUN 54 REVISED (C) FOR CHANGES SEE PAGES 1 THRU 8

FED SUP CLASS
5310

TABLE III. DASH NUMBERS AND DIMENSIONS. - CONTINUED

DASH NO BRASS ^{1/}	Ø A	TOLERANCE		Ø B	TOLERANCE		C THICKNESS BASIC	LIMITS	
		+	-		+	-		MAX	MIN
915	.438	.015	.005	1.000	.030	.007	.083	.104	.064
916	.469	.015	.005	.922	.015	.007	.065	.080	.051
917	.500	.015	.005	1.250	.030	.007	.083	.104	.064
918	.531	.015	.005	1.062	.030	.007	.095	.121	.074
953	.562	.005	.005	.968	.000	.015	.049	.065	.036
919	.562	.015	.005	1.375	.030	.007	.109	.132	.086
943 ^{2/}	.594	.015	.005	1.469	.030	.007	.100	.112	.090
940 ^{4/}	.604	.015	.005	1.469	.030	.007	.100	.112	.090
920	.656	.030	.007	1.312	.030	.007	.095	.121	.074
921	.688	.030	.007	1.750	.030	.007	.134	.160	.108
922	.812	.030	.007	1.469	.030	.007	.134	.160	.108
923	.812	.030	.007	2.000	.030	.007	.148	.177	.122
924	.938	.030	.007	1.750	.030	.007	.134	.160	.108
925	.938	.030	.007	2.250	.030	.007	.165	.192	.136
926	1.062	.030	.007	2.000	.030	.007	.134	.160	.108
954	1.062	.010	.010	1.671	.010	.010	.065	.080	.051
927	1.062	.030	.007	2.500	.030	.007	.165	.192	.136
928	1.250	.030	.007	2.750	.030	.007	.165	.192	.136
929	1.375	.030	.007	3.000	.030	.007	.165	.192	.136
930	1.500	.045	.010	3.250	.045	.010	.180	.213	.153
931	1.625	.045	.010	3.500	.045	.010	.180	.213	.153
932	1.750	.045	.010	3.750	.045	.010	.180	.213	.153
933	1.875	.045	.010	4.000	.045	.010	.180	.213	.153
934	2.000	.045	.010	4.250	.045	.010	.180	.213	.153
935	2.125	.045	.010	4.500	.045	.010	.180	.213	.153
936	2.375	.045	.010	4.750	.045	.010	.220	.248	.193
937	2.625	.045	.010	5.000	.045	.010	.238	.280	.210
938	2.875	.065	.010	5.250	.065	.010	.259	.310	.228
939	3.125	.065	.010	5.500	.065	.010	.284	.327	.249

1/ SEE INTERCHANGEABILITY TABLE

2/ SELECTED SIZES TYPE A IN ACCORDANCE WITH ANSI B18.22.1

3/ TYPE B IN ACCORDANCE WITH ANSI B18.22.1

4/ NONSTANDARD. REMAINDER ARE PREFERRED SIZES TYPE A IN ACCORDANCE WITH ANSI B18.22.1

5/ SEE NOTE 4

TABLE IV. DASH NUMBERS AND DIMENSIONS. 4/

DASH NO COPPER	Ø A	TOLERANCE		Ø B	TOLERANCE		C THICKNESS BASIC	LIMITS	
		+	-		+	-		MAX	MIN
501	.078	.000	.005	.188	.000	.005	.020	.025	.016
502	.094	.000	.005	.250	.000	.005	.020	.025	.016
503 ^{1/}	.125	.000	.005	.250	.000	.005	.022	.028	.017
504	.125	.008	.005	.312	.008	.005	.032	.040	.025
505 ^{2/}	.156	.008	.005	.312	.008	.005	.035	.048	.027
544	.141	.008	.005	.406	.008	.005	.040	.045	.035
506	.156	.008	.005	.375	.015	.005	.049	.065	.036
507 ^{1/}	.188	.008	.005	.375	.015	.005	.049	.065	.036
541	.188	.008	.005	.438	.015	.005	.049	.065	.036
508 ^{1/}	.219	.008	.005	.438	.015	.005	.049	.065	.036
542	.219	.008	.005	.500	.015	.005	.049	.065	.036
545	.219	.005	.005	.438	.010	.010	.032	.037	.027
509	.250	.015	.005	.562	.015	.005	.065	.080	.051
510	.281	.015	.005	.625	.015	.005	.065	.080	.051
511	.312	.015	.005	.734	.015	.007	.065	.080	.051
546	.312	.007	.000	.500	.010	.010	.040	.050	.030
547	.344	.000	.010	.562	.010	.000	.032	.037	.027
512	.344	.015	.005	.688	.015	.007	.065	.080	.051
513	.375	.015	.005	.875	.030	.007	.083	.104	.064
548	.406	.000	.015	.625	.010	.010	.032	.037	.027

APPROVED 2 JUN 54 REVISED (C) FOR CHANGES SEE PAGES 1 THRU 8

P. A. Other Cont	AR AS 99	INTERNATIONAL INTEREST	TITLE WASHER, FLAT - METAL, ROUND GENERAL PURPOSE	MILITARY STANDARD MS 15795
PROCUREMENT SPECIFICATION FF-W-92		SUPERSEDES BEBX SERIES IN PART		PAGE 4 OF 8

FED SUP CLASS
5310

TABLE IV. DASH NUMBERS AND DIMENSIONS. - CONTINUED

DASH NO COPPER	Ø A	TOLERANCE		Ø B	TOLERANCE		C THICKNESS BASIC	LIMITS	
		+	-		+	-		MAX	MIN
514	.406	.015	.005	.812	.015	.007	.065	.080	.051
515	.438	.015	.005	1.000	.030	.007	.083	.104	.064
516	.469	.015	.005	.922	.015	.007	.065	.080	.051
549	.469	.015	.005	1.125	.015	.007	.063	.071	.056
550	.500	.010	.010	.812	.010	.010	.032	.037	.032
551	.500	.010	.010	1.125	.010	.010	.063	.071	.059
517	.500	.015	.005	1.250	.030	.007	.083	.104	.064
518	.531	.015	.005	1.062	.030	.007	.095	.121	.074
519	.562	.015	.005	1.375	.030	.007	.109	.132	.086
542 ^{1/}	.594	.015	.005	1.469	.030	.007	.100	.112	.090
540 ^{2/}	.604	.015	.005	1.469	.030	.007	.100	.112	.090
552	.625	.025	.000	1.000	.025	.000	.032	.037	.027
520	.656	.030	.007	1.312	.030	.007	.095	.121	.074
521	.688	.030	.007	1.750	.030	.007	.134	.160	.108
522	.812	.030	.007	1.469	.030	.007	.134	.160	.108
523	.812	.030	.007	2.000	.030	.007	.148	.177	.122
524	.938	.030	.007	1.750	.030	.007	.134	.160	.108
525	.938	.030	.007	2.250	.030	.007	.165	.192	.136
526	1.062	.030	.007	2.000	.030	.007	.134	.160	.108
527	1.062	.030	.007	2.500	.030	.007	.165	.192	.136
528	1.250	.030	.007	2.750	.030	.007	.165	.192	.136
529	1.375	.030	.007	3.000	.030	.007	.165	.192	.136
530	1.500	.045	.010	3.250	.045	.010	.180	.213	.153
553	1.625	.040	.010	2.250	.030	.007	.065	.080	.051
531	1.625	.045	.010	3.500	.045	.010	.180	.213	.153
532	1.750	.045	.010	3.750	.045	.010	.180	.213	.153
533	1.875	.045	.010	4.000	.045	.010	.180	.213	.153
534	2.000	.045	.010	4.250	.045	.010	.180	.213	.153
535	2.125	.045	.010	4.500	.045	.010	.180	.213	.153
536	2.375	.045	.010	4.750	.045	.010	.220	.248	.193
537	2.625	.045	.010	5.000	.045	.010	.238	.280	.210
538	2.875	.065	.010	5.250	.065	.010	.259	.310	.228
539	3.125	.065	.010	5.500	.065	.010	.284	.327	.249

1/ SELECTED SIZES TYPE A IN ACCORDANCE WITH ANSI B18.22.1

2/ TYPE B IN ACCORDANCE WITH ANSI B18.22.1

3/ NONSTANDARD. REMAINDER ARE PREFERRED SIZES TYPE A IN ACCORDANCE WITH ANSI B18.22.1

4/ SEE NOTE 4

TABLE V. DASH NUMBERS AND DIMENSIONS.

DASH NO ALUMINUM ALLOY	Ø A	TOLERANCE		Ø B	TOLERANCE		C THICKNESS BASIC	LIMITS	
		+	-		+	-		MAX	MIN
744	.078	.000	.010	.250	.020	.005	.016	.019	.013
701	.078	.000	.005	.188	.000	.005	.020	.025	.016
702	.094	.000	.005	.250	.000	.005	.020	.025	.016
756	.094	.010	.000	.500	.015	.015	.062	.080	.051
703 ^{1/}	.125	.000	.005	.250	.000	.005	.022	.028	.017
704 ^{4/}	.125	.008	.005	.312	.008	.005	.032	.040	.025
705 ^{1/}	.156	.008	.005	.312	.008	.005	.035	.048	.027
706	.156	.008	.005	.375	.015	.005	.049	.065	.036
745	.172	.010	.005	1.000	.010	.010	.040	.044	.036
707 ^{1/}	.188	.008	.005	.375	.015	.005	.049	.065	.036
741	.188	.008	.005	.438	.015	.005	.049	.065	.036
746	.203	.005	.005	.625	.020	.005	.064	.068	.060
747	.203	.010	.005	.688	.010	.010	.040	.045	.035
748	.203	.000	.008	.953	.010	.010	.040	.045	.035
749	.203	.010	.010	1.188	.010	.010	.064	.069	.059
708 ^{1/}	.219	.008	.005	.438	.015	.005	.049	.065	.036
742	.219	.008	.005	.500	.015	.005	.049	.065	.036
709	.250	.015	.005	.562	.015	.005	.065	.080	.051
750	.250	.010	.010	1.250	.010	.010	.064	.068	.060
751	.266	.010	.010	1.150	.010	.010	.064	.070	.058

P. A. Other Cont	AR AS 99	INTERNATIONAL INTEREST	TITLE WASHER, FLAT-METAL, ROUND GENERAL PURPOSE	MILITARY STANDARD MS15795
PROCUREMENT SPECIFICATION FF-W-92		SUPERSEDES 8EBX SERIES IN PART		PAGE 5 OF 8

DD FORM 672-1 (COORDINATED)

PREVIOUS EDITIONS OF THIS FORM ARE OBSOLETE

5310 - 1408

USER ACTIVITIES:
ARMY - ER, ME
NAVY - MC, SHREV. ACTIVITIES:
AT, AV, MI
AIR FORCE - II
DLA - IS
NSA - NS

This standard is approved for use by all Departments and Agencies of the Department of Defense for all new engineering and design applications and for repetitive use shall be made from this document when applicable.

APPROVED 2 JUN 54 REVISED 6 FOR CHANGES SEE PAGES 1 THRU 8

PEO. SUP CLASS
 5310

TABLE V. DASH NUMBERS AND DIMENSIONS.- CONTINUED

DASH NO ALUMINUM ALLOY	Ø A	TOLERANCE		Ø B	TOLERANCE		C THICKNESS BASIC	LIMITS	
		+	-		+	-		MAX	MIN
752	.281	.015	.000	.531	.010	.010	.032	.034	.029
710	.281	.015	.005	.625	.015	.005	.065	.080	.051
711	.312	.015	.005	.734	.015	.007	.065	.080	.051
753	.312	.015	.000	1.062	.010	.010	.062	.067	.059
712	.344	.015	.005	.688	.015	.007	.065	.080	.051
713	.375	.015	.005	.875	.030	.007	.083	.104	.064
754	.375	.015	.000	.938	.010	.010	.016	.017	.015
714	.406	.015	.005	.812	.015	.007	.065	.080	.051
715	.438	.015	.005	1.000	.030	.007	.083	.104	.064
716	.469	.015	.005	.922	.015	.007	.065	.080	.051
717	.500	.015	.005	1.250	.030	.007	.083	.104	.064
718	.531	.015	.005	1.062	.030	.007	.095	.121	.074
719	.562	.015	.005	1.375	.030	.007	.109	.132	.086
743 ^{2/}	.594	.015	.005	1.469	.030	.007	.100	.112	.090
755	.594	.015	.005	.968	.035	.007	.100	.112	.090
740 ^{3/}	.604	.015	.005	1.469	.030	.007	.100	.112	.090
720	.656	.030	.007	1.312	.030	.007	.095	.121	.074
721	.688	.030	.007	1.750	.030	.007	.134	.160	.108
722	.812	.030	.007	1.469	.030	.007	.134	.160	.108
723	.812	.030	.007	2.000	.030	.007	.148	.177	.122
724	.938	.030	.007	1.750	.030	.007	.134	.160	.108
725	.938	.030	.007	2.250	.030	.007	.165	.192	.136
726	1.062	.030	.007	2.000	.030	.007	.134	.160	.108
727	1.062	.030	.007	2.500	.030	.007	.165	.192	.136
728	1.250	.030	.007	2.750	.030	.007	.165	.192	.136
729	1.375	.030	.007	3.000	.030	.007	.165	.192	.136
730	1.500	.045	.010	3.250	.045	.010	.180	.213	.153
731	1.625	.045	.010	3.500	.045	.010	.180	.213	.153
732	1.750	.045	.010	3.750	.045	.010	.180	.213	.153
733	1.875	.045	.010	4.000	.045	.010	.180	.213	.153
734	2.000	.045	.010	4.250	.045	.010	.180	.213	.153
735	2.125	.045	.010	4.500	.045	.010	.180	.213	.153
736	2.375	.045	.010	4.750	.045	.010	.220	.248	.193
737	2.625	.045	.010	5.000	.045	.010	.238	.280	.210
738	2.875	.065	.010	5.250	.065	.010	.259	.310	.228
739	3.125	.065	.010	5.500	.065	.010	.284	.327	.249

1/ SELECTED SIZES TYPE A IN ACCORDANCE WITH ANSI B18.22.1

2/ TYPE B IN ACCORDANCE WITH ANSI B18.22.1

3/ NONSTANDARD. REMAINDER ARE PREFERRED SIZES TYPE A IN ACCORDANCE WITH ANSI B18.22.1

4/ -704 REPLACED BY AN660-KD4, MS15795-704 WASHERS MAY BE USED UNTIL EXISTING STOCKS ARE DEPLETED

5/ SEE NOTE 4

APPROVED 2 JUN 54 REVISED (C) FOR CHANGES SEE PAGES 1 THRU 8

P. A.	AR	INTERNATIONAL INTEREST	TITLE	MILITARY STANDARD
Other Code	AS 99		WASHER, FLAT-METAL, ROUND GENERAL PURPOSE	MS15795
PROCUREMENT SPECIFICATION FF-W-92	SUPERSEDED BEBX SERIES IN PART		PAGE 6 OF 8	

ARMY-ER,ME
NAVY-MC,SHAIR FORCE-II
DLA-IS
NSA-NS

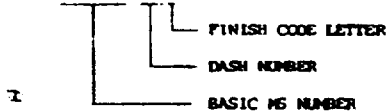
This form is not to be used for engineering and design applications and for repetitive use unless so noted on this form.

FED. SUP CLASS
5310

REQUIREMENTS:

1. **MATERIAL:** CORROSION RESISTANT STEEL, 300 SERIES, IN ACCORDANCE WITH PROCUREMENT SPECIFICATION. NICKEL-COPPER ALLOY, BRASS, COPPER AND ALUMINUM ALLOY IN ACCORDANCE WITH PROCUREMENT SPECIFICATION.
2. **PROTECTIVE COATING AND SURFACE TREATMENT:** NICKEL-COPPER ALLOY SHALL BE UNCOATED IN ACCORDANCE WITH PROCUREMENT SPECIFICATION. BRASS SHALL BE BLACK OXIDE COATED IN ACCORDANCE WITH MIL-F-495. COPPER SHALL BE UNCOATED IN ACCORDANCE WITH PROCUREMENT SPECIFICATION. ALUMINUM ALLOY, ANODIZE IN ACCORDANCE WITH MIL-A-8625, TYPE I OR II, CLASS 1. CORROSION RESISTANT STEEL SHALL BE CLEANED, DESCALED AND PASSIVATED IN ACCORDANCE WITH ASTM A380. WHEN SPECIFIED, (SEE REQUIREMENT 5 HEREIN) CORROSION RESISTANT STEEL SHALL BE BLACK OXIDE COATED IN ACCORDANCE WITH MIL-C-13924, CLASS 4.
3. **FLATNESS:** WASHERS SHALL BE FLAT WITHIN .005 FOR OUTSIDE DIAMETERS UP TO .875 INCLUSIVE AND .010 FOR LARGER SIZES.
4. **MAGNETIC PERMEABILITY:** CORROSION RESISTANT STEEL WASHERS SHALL HAVE A MAGNETIC PERMEABILITY OF 2.0 MAXIMUM (AIR = 1.00) FOR A FIELD STRENGTH OF H = 200 OERSTEDS USING A MAGNETIC INDICATOR IN ACCORDANCE WITH MIL-I-17214.
5. **PART NUMBER:** THE PART NUMBER SHALL CONSIST OF THE BASIC NS NUMBER, FOLLOWED BY A DASH NUMBER FROM TABLES I, II, III, IV OR V AND A FINISH CODE LETTER "B" FOR BLACK OXIDE CORROSION RESISTANT STEEL WASHERS ONLY. NO CODE FOR ALL OTHER WASHERS.

EXAMPLE: MS15795-801B



MS15795-801B INDICATES - WASHER, FLAT-METAL, ROUND, GENERAL PURPOSE;
CHES; INSIDE DIAMETER .078; OUTSIDE DIAMETER
.188; THICKNESS .020; BLACK OXIDE FINISH.

NOTES:

1. ALL DIMENSIONS ARE IN INCHES.
2. IN THE EVENT OF A CONFLICT BETWEEN THE TEXT OF THIS STANDARD AND THE REFERENCES CITED HEREIN, THE TEXT OF THIS STANDARD SHALL TAKE PRECEDENCE.
3. REFERENCED GOVERNMENT (OR NONGOVERNMENT) DOCUMENTS OF THE ISSUE LISTED IN THAT ISSUE OF THE DEPARTMENT OF DEFENSE INDEX OF SPECIFICATIONS AND STANDARDS (DDOISS) SPECIFIED IN THE SOLICITATION FORM A PART OF THIS STANDARD TO THE EXTENT SPECIFIED HEREIN.
4. WASHERS REPRESENTED BY DASH NUMBERS 1 THROUGH 39 AND 40 AND 101 THROUGH 139 AND 140 ARE CANCELLED AFTER 5 DECEMBER 1963. USE MS27183. WASHERS REPRESENTED BY DASH NUMBERS 201 THROUGH 239 ARE CANCELLED AFTER 13 OCTOBER 1961. USE MS27183. INTERCHANGABILITY RELATIONSHIP. MS27183 PARTS CAN REPLACE THE CANCELLED WASHERS OF THE SAME DIMENSIONS. THE CANCELLED WASHERS CANNOT ALWAYS REPLACE MS27183 WASHERS AND SHOULD BE USED UNTIL EXISTING STOCK IS DEPLETED. THEN USE ONLY THE SUPERSEDING MS WASHERS OF THE SAME DIMENSIONS FOR DESIGN AND REPLACEMENT.

USER ACTIVITIES:
ARMY-ER, ME
NAVY-MC, SH

RE ACTIVITIES:
AR AT, AV, MI
AIR FORCE-II
DLA-IS
NSA-NS

1. Every standard is approved for use by all Departments and Agencies of the Department of Defense.
2. For all new engineering and design applications and for repetitive use shall be made from this document when applicable.

APPROVED 2 JUN 54 REVISED (C) FOR CHANGES SEE PAGES I THRU 8

P. A. Other Cost	AR AS 99	INTERNATIONAL INTEREST	TITLE WASHER, FLAT-METAL, ROUND GENERAL PURPOSE	MILITARY STANDARD MS15795
PROCUREMENT SPECIFICATION FF-W-92			SUPERSEDES: BEBX SERIES IN PART	PAGE 7 OF 8

FED. SUP CLASS
5310

CORROSION RESISTANT STEEL, 300 AND 400 SERIES, AND UNCOATED BRASS WASHERS COVERED BY DASH NUMBERS GIVEN IN PREVIOUS ISSUES OF THIS STANDARD ARE CANCELLED/INACTIVATED AFTER THE INDICATED APPROVAL DATE FOR REVISION B. USE THE NEW DASH NUMBERS GIVEN IN THE PRECEDING SHEET OF THIS STANDARD. THE CANCELLED WASHERS CAN NOT ALWAYS REPLACE THE NEW WASHERS AND SHOULD BE USED UNTIL EXISTING STOCK IS DEPLETED. THEN USE ONLY THE NEW WASHERS FOR DESIGN AND REPLACEMENT. REPLACEMENT SHALL BE IN ACCORDANCE WITH THIS TABLE.

TABLE VI. INTERCHANGEABILITY

PART NUMBERS - CRES				PART NUMBERS - BRASS			
CANCELLED	NEW	CANCELLED	NEW	CANCELLED	NEW	CANCELLED	NEW
MS15795-301	MS15795-801	MS15795-321	MS15795-821	MS15795-601	MS15795-901	MS15795-621	MS15795-921
302	802	322	822	602	902	622	922
303	803	323	823	603	903	623	923
304	804	324	824	604	904	624	924
305	805	325	825	605	905	625	925
306	806	326	826	606	906	626	926
307	807	327	827	607	907	627	927
308	808	328	828	608	908	628	928
309	809	329	829	609	909	629	929
310	810	330	830	610	910	630	930
311	811	331	831	611	911	631	931
312	812	332	832	612	912	632	932
313	813	333	833	613	913	633	933
314	814	334	834	614	914	634	934
315	815	335	835	615	915	635	935
316	816	336	836	616	916	636	936
317	817	337	837	617	917	637	937
318	818	338	838	618	918	638	938
319	819	339	839	619	919	639	939
320	820	340	840	620	920	640	940

APPROVED 2 JUN 54 REVISED (G) FOR CHANGES SEE PAGES 1 THRU 8

P. A. Other Cont	AR AS 99	INTERNATIONAL INTEREST	TITLE WASHER, FLAT-METAL, ROUND GENERAL PURPOSE	MILITARY STANDARD MS 15795
PROCUREMENT SPECIFICATION FF-W-92		SUPERSEDES BEBX SERIES IN PART		PAGE 8 OF 8

NAVY - MC, SH

AIR FORCE - II
DLA - IS
NSA - NS

REPLACEMENT WASHER SPECIFICATIONS