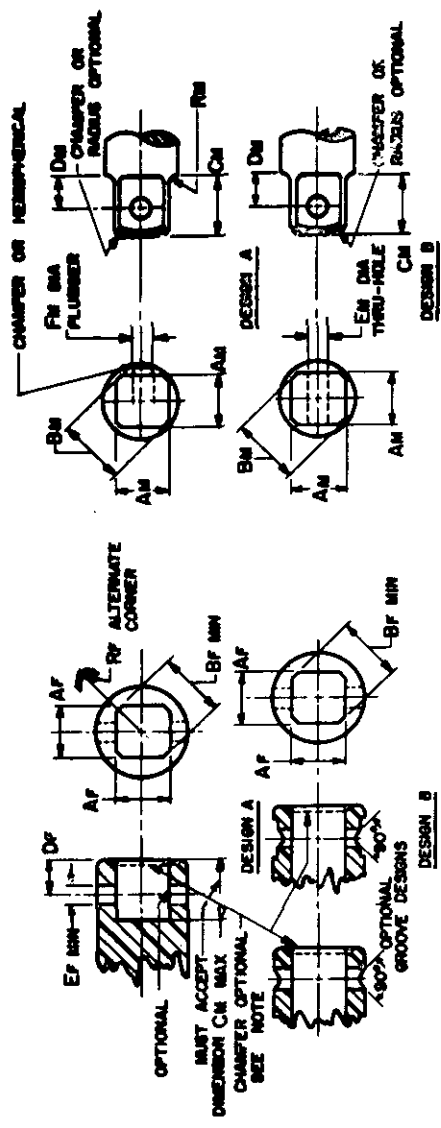


FED. SUP CLASS
3460

④ CANCELED AFTER 22 NOVEMBER 1967
USE TABLE III OF GGG-W-660

[illegible]

NOTE: Incorporating filler radius (R_{fil}) at shoulder of male tung precludes use of minimum diameter cross-hole in sockets (E_p), unless female drive end is chamfered (shown as optional). If female drive end is not chamfered, socket cross-hole diameter (E_s) shall be increased to compensate for fillet radius R_{fil} (see).

(PROJECT 3460-0050)

COST/DIAGN Ord Ships AP	OTHER INT. A - CDS35T B - AMCOY IS -	MILITARY STANDARD		MSI5775
		SQUARE DRIVE END STANDARD, POWER TYPE (MALE AND FEMALE) (FOR USE WITH SQUARE DRIVE SOCKET WRENCHES AND ATTACHMENTS)		
PROCESSING SPECIFICATI 000-V-000		EXPERIMENT:	RENT	1 0 1

APPROVED 7 MAR 1955 REVISED (A) 22 NOVEMBER 1967