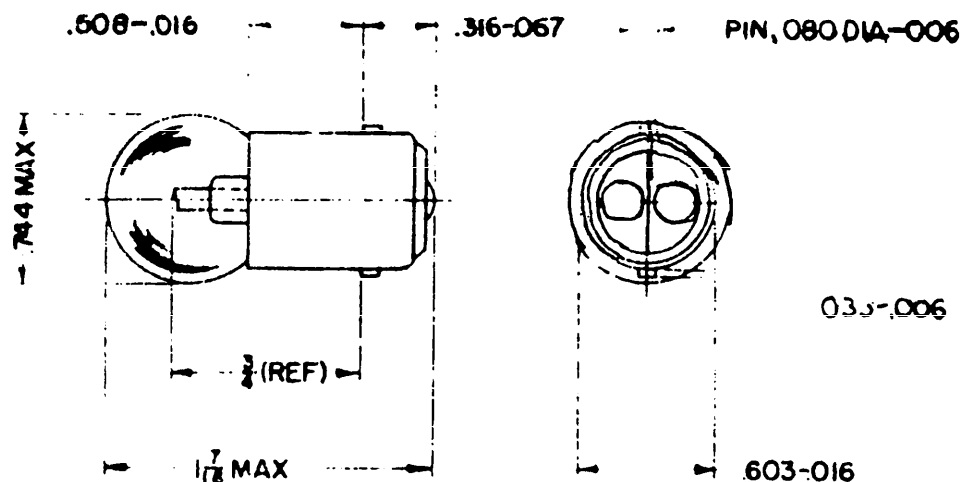


OFFICE. When Government drawings, specifications, or other data are used for any purpose other than in connection with a definitely related Government procurement operation, the United States Government, thereby incurs no responsibility, nor any obligation whatsoever, and the fact that the Government may have furnished, or in any way supplied the said drawings, specifications, or other data is not to be regarded by implication or otherwise as in any way constituting an authorization of the holder to manufacture, practice, use, or sell any patented invention that may in any way be related thereto.

THIS DOCUMENT HAS BEEN PROMULGATED BY THE DEPARTMENT OF DEFENSE AS THE MILITARY STANDARD TO LIMIT THE SELECTION OF THE ITEM, PRODUCT, OR DESIGN COVERED HEREIN IN ENGINEERING, DESIGN AND PROCUREMENT. THIS STANDARD SHALL BECOME EFFECTIVE NOT LATER THAN NINETY (90) DAYS AFTER THE LATEST DATE OF APPROVAL SHOWN.

FED SUP CLASS

6240



| MS PART NUMBER | TRADE NUMBER | CANDLE POWER | DESIGN | | FIL CONST | AVG LIFE (HOURS) | FIIN |
|----------------------|-----------------|-----------------|--------|----------|--------------|------------------------|----------|
| | | | VOLTS | AMPS | | | |
| MS15569-3 | 62 | 6 ± 9% | 6.50 | 102 ± 5% | C-2R | 500 | 155-8662 |
| MS15569-1 | 64 | 3 ± 8% | 7.00 | 63 ± 5% | C-2R | 1000 | 155-8663 |
| MS15569-2 | 64R /4 | 3 ± 8% /5 | 7.00 | 63 ± 5% | C-2R | 1000 | 155-8701 |
| MS15569-6 | 68 | 3 ± 15% | 13.00 | 36 ± 8% | C-2R /6 | 1000 | 155-8664 |
| MS15569-4 | 90 | 6 ± 15% | 13.00 | 58 ± 8% | C-2R | 750 | 155-8661 |
| MS15569-5 | 90R /4 | 6 ± 15% /5 | 13.00 | 58 ± 8% | C-2R | 750 | 155-8619 |
| MS15569-7 | 1252 | 3 /3 | 28.00 | .23 /4 | 2C-2V | 1000 | 019-0875 |
| MS15569-8 | 304 | 6 /3 | 28.00 | .30 /3 | C-2F | 500 | 155-7788 |

NOTES: 1. DIMENSIONS IN INCHES

2. SHAPE OF BULB IS DESIGNATED BY A LETTER. SIZE IS EXPRESSED BY A NUMBER DENOTING THE APPROXIMATE DIAMETER IN EIGHTHS OF AN INCH.
3. CANDLE POWER AND AMPERE RATINGS ARE IN ACCORDANCE WITH MANUFACTURER'S INFORMATION AND ARE NOT COVERED BY SPECIFICATION W-L-III.
4. ALL COATINGS SHALL FIRMLY ADHERE, BE UNIFORM THROUGHOUT AND SHALL NOT DISCOLOR, CRACK, FADE OR PEEL.
RED: THE COLORING SHALL BE RED, IN ACCORDANCE WITH SPECIFICATION MIL-C-25050 AT THE RATED VOLTAGE, WHEN FIRST TURNED ON AND AT THE STABILIZED OPERATING TEMPERATURE.
5. CANDLE POWER APPLIES TO LAMP BEFORE RED COATING IS APPLIED.
6. LIGHT CENTER LENGTH IS 13/16.
7. THIS STANDARD TAKES PRECEDENCE OVER DOCUMENTS REFERENCED HEREIN.
8. REFERENCED DOCUMENTS SHALL BE OF THE ISSUE IN EFFECT ON DATE OF INVITATIONS FOR BID.

⑧ REDRAWN

| | | | |
|------------------------------------|--------------------------------|--|---------|
| CUSTOMERS ORD | OTHER INT. A-SITE | MILITARY STANDARD LAMP, INCANDESCENT G-6 BULB, DOUBLE CONTACT, BAYONET CANDELABRA BASE | MS15569 |
| SHIPS USAF | N-AORY AF-USAF | | |
| PROCEDURE SPECIFICATION W-L-III | SUPEROIDES: MS15569 (SHIPS) | SHEET | OF |

DD FORM 672-1

RECEIVED
17 JUL 1964