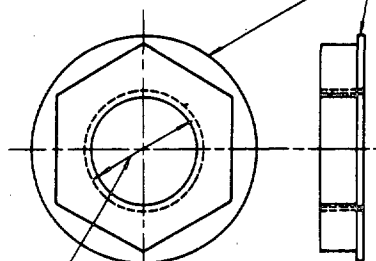


FED. SUP CLASS

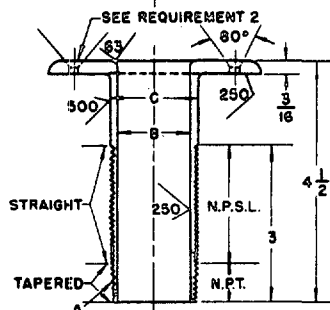
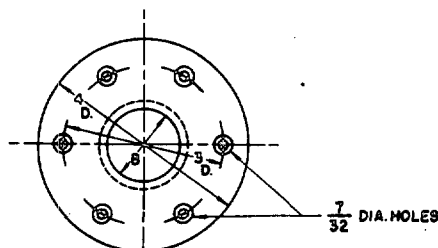
2040

NOTICE—When Government drawings, specifications, or other data are used for any purpose other than in connection with a definitely related Government procurement operation, the United States Government thereby incurs no responsibility, nor any obligation whatsoever; and the fact that the Government may have formulated, furnished, or in any way supplied the said drawings, specifications, or other data is not to be regarded by implication or otherwise as in any manner licensing the holder or any other person or corporation, or conveying any rights or permission to manufacture, use, or sell any patented invention that may in any way be related thereto.

WASHER FACE (SEE REQUIREMENT 5)

TAPPED STRAIGHT PIPE THREADS  
(SEE DIMENSION "A")

PIECE NO. 1



PIECE NO. 2

| MS part number | A <sup>✓</sup><br>I. P. S.<br>Inches | B <sup>✓</sup><br>Inches | C <sup>✓</sup><br>Inches | FIN      |
|----------------|--------------------------------------|--------------------------|--------------------------|----------|
| MS15172-1      | 1-1/4                                | 1-3/8                    | 1-11/16                  | 372-0557 |
| MS15172-2      | 1-1/2                                | 1-5/8                    | 1-15/16                  | 372-0558 |

✓Tolerance to conform to standard pipe size tolerances.  
 ✓All tolerances (except for threaded areas) shall be plus or minus 1/32-inch.

## REQUIREMENTS

- ① 1. Through hull connection shall be commercial bronze with a tensile strength of not less than 30,000 pounds per square inch.
- ② 2. Countersink for number 10 flat head wood screws.
3. Remove all burrs and sharp edges and finish as indicated on detail.
4. Through hull connection used for fitting in hull above the load waterline to take discharge end of pipe, tubing or hose for overboard discharge of water from deck drains, propulsion engine, bilge pumps, etc.
- ② 5. One cast bronze locknut with washer face shall be furnished with each through hull connection.

This standard has been approved by the Bureau of Ships, Department of the Navy, and is mandatory for use by that activity. All other military activities are required to employ this standard where suitable.

P.A.  
Ships  
Other Cust

TITLE

① SCUPPERS, OVERBOARD DISCHARGE, MARINE HARDWARE

MILITARY STANDARD

MS15172 (SHIPS)

PROCUREMENT SPECIFICATION  
NONE

SUPERSEDES:

SHEET 1 OF 1

DD FORM 1 SEP 57 672-1N

LIMITED COORDINATION

PREVIOUS EDITIONS OF THIS FORM ARE OBSOLETE.

(Project 2040-0013Sh)

APPROVED 6 JUL 1957 REVISED ② 2 JUN 1959