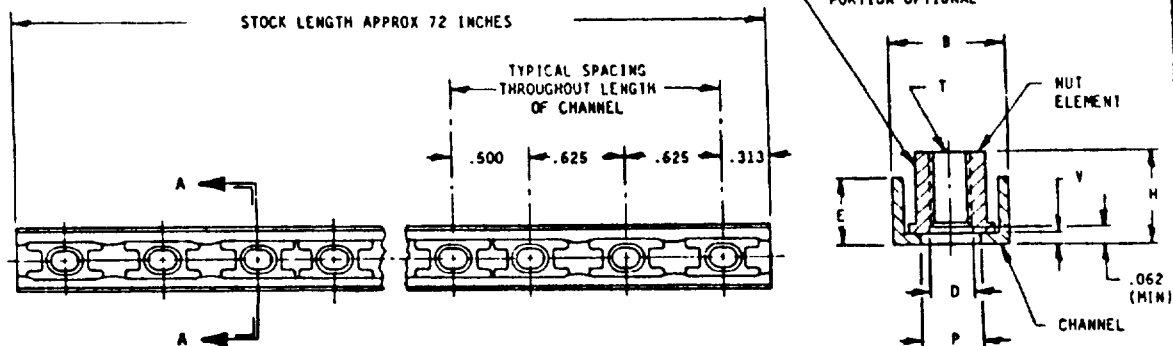


FED. SUP CLASS
5310USER SYMBOLS
ARMY - EL, RIREVIEW SYMBOLS
ARMY - AV
NAVY - AS
USAF - IINONCUMULATIVE POSITION TOLERANCE FOR NUT ELEMENT SPACING SHALL BE $\pm .010$.

THREAD SIZE DASH NO.	(a) "T" THREAD	B MAX	D MIN	H MAX	(e) P		V MAX	AXIAL STRENGTH LBS MIN	WEIGHT (MAX)			E REF
					MAX	MIN			NUT ELEMENTS LBS/100	ALUMINUM CHANNEL LBS/INCH	CRES CHANNEL LBS/INCH	
3	.1900-32UNJF-3B	.416	.194	.250	.270	.210	.035	2,460	.20	.0028	.0071	.188

(a) THREADS PER MIL-S-8879.

(b) "H" MAX APPLIES TO NUT ELEMENT AND CHANNEL. MIN "H" NOT SPECIFIED, LIMITED ONLY BY STRENGTH REQUIREMENTS OF PROCUREMENT SPECIFICATION.

(c) FLOAT OF NUT ELEMENT PORTION OF ASSEMBLY SHALL BE NOT LESS THAN .030 NOR MORE THAN .040 LONGITUDINALLY AND NOT LESS THAN .010 NOR MORE THAN .030 Laterally FROM CENTERED POSITION. NUT ELEMENT SHALL BE CAPABLE OF ENGAGEMENT WITH A BOLT IN THE MAXIMUM MISALIGNMENT POSITION.

(d) THE CHANNEL SHALL PROVIDE A BEARING SURFACE FOR THE NUT ELEMENT WITHIN THE HOUSING. THE CENTERLINE OF THE CHANNEL SHALL NOT DEVIATE FROM A STRAIGHT LINE BY MORE THAN .015 PER 12 INCHES. THE NUT ELEMENT AND BASE SHALL FORM ONE INTEGRAL UNIT.

(e) HOLE IN CHANNEL MUST PROVIDE FOR FULL FLOAT OF NUT ELEMENT BUT NEED NOT BE CIRCULAR.

MATERIAL: NUT ELEMENT - CARBON STEEL, COMPOSITIONS 1035 (UNS G10350), 1040 (UNS G10400) AND 1050 (UNS G10500), IN ACCORDANCE WITH QQ-S-635; 1042 (UNS G10420), IN ACCORDANCE WITH ASTM A29.
 ALLOY STEEL, GRADES 4130 (UNS G41300), 4340 (UNS G43400) AND 8740 (UNS G87400) IN ACCORDANCE WITH ASTM A29.
 CHANNEL - CRES PER UNS S32100, OR 2024 ALUMINUM ALLOY (WHEN SPECIFIED).

HARDNESS: NUT ELEMENTS SHALL HAVE A MAXIMUM HARDNESS OF ROCKWELL C 49.

PLATING: NUT ELEMENTS - CADMIUM PLATED IN ACCORDANCE WITH QQ-P-416, TYPE II, CLASS 2.
 CHANNEL - CRES, PASSIVATE IN ACCORDANCE WITH QQ-P-35.
 ALUMINUM, SEE PROCUREMENT SPECIFICATION.

LUBRICANT: DRY FILM LUBRICANT, ON NUT ELEMENT IN ACCORDANCE WITH MIL-L-8937 (WHEN SPECIFIED).

DESIGN AND USAGE LIMITATIONS: THESE NUTS SHALL BE USED IN ACCORDANCE WITH MS33588. ALL NUTS SHALL BE QUALIFIED PRODUCTS LISTED ON QPL-25027.

TEMPERATURE RANGE: CRES CHANNEL - 450°F. ALUMINUM CHANNEL - 250°F.

SERVICES SHALL STOCK IN 72 INCH LENGTHS ONLY

"Review/Spec Information is current as of the date of this document.
 For future contributions of changes to this document, or for cancellation,
 should be based on the information in the current QPL-25027."

DISTRIBUTION STATEMENT: APPROVED FOR PUBLIC RELEASE. DISTRIBUTION IS UNLIMITED.
 This military standard is intended for use by all Departments &
 Agencies of the Department of Defense. Submission for all new
 engineering and design applications and for repetitive use shall be
 made from this document.

AMSC N/A

P.A.
NAVY - AS
Other Cust
USAF - II
ARMY - AV

PROCUREMENT SPECIFICATION
MIL-N-25027

TITLE

NUT, SELF-LOCKING, CHANNEL, FLOATING,
CARBON STEEL, 125 KSI, Ftu

SUPERSEDES:

MILITARY STANDARD

MS14493

SHEET 1 OF 2

USER SYMBOLS:
ADMT - EL, NI

REVIEWER SYMBOLS:
ADMT - AV
NAVY - AS
USAF - 11

"Revision/issue information is current as of the date of this document.
For future contributions of changes to this document, draft consultation
should be based on the information in the current 000018."

DISTRIBUTION STATEMENT A: APPROVED FOR PUBLIC RELEASE. DISTRIBUTION IS UNLIMITED.
This military standard is approved for use by all Departments &
Agencies of the Department of Defense. Initiation for all new
engineering and design specifications and for regulations and shall be
made from this document.

AMSC N/A

FED. SUP. CLASS
5310

PART NUMBER:

MS14493 A L 3 - 5

- DENOTES NUMBER OF NUT ELEMENTS WHEN LESS THAN STOCK LENGTH
- DENOTES THREAD SIZE DASH NUMBER
- "L" DENOTES DRY FILM LUBRICATED NUT ELEMENT
- "-" DENOTES NUT ELEMENT WITHOUT DRY FILM LUBRICANT
- "A" DENOTES 2024 ALUMINUM ALLOY CHANNEL
- "C" CRES PER QQ-S-763, CLASS 321 CHANNEL
- BASIC MILITARY STANDARD NUMBER

EXAMPLE OF PART NUMBER:

MS14493CL3 = NUT, SELF LOCKING, CRES CHANNEL, DRY FILM LUBRICATED NUT ELEMENT, .1900-32UNJF-3B THREAD, STOCK LENGTH
MS14493A4-10 = NUT, SELF LOCKING, ALUMINUM CHANNEL, NUT ELEMENT WITHOUT DRY FILM LUBE, .2500-28UNJF-3B THREAD,
10 NUT ELEMENTS

SURFACE TEXTURE: IN ACCORDANCE WITH ANSI B46.1 1978 (ANSI), SHALL NOT EXCEED 125 MICRO INCHES.

BREAK ALL SHARP CORNERS AND REMOVE ALL BURRS.

DIMENSIONS IN INCHES.

DIMENSIONS TO BE MET PRIOR TO LUBRICATION.

IN THE EVENT OF A CONFLICT BETWEEN THE TEXT OF THIS STANDARD AND THE REFERENCES CITED HEREIN, THE TEXT OF THIS
STANDARD SHALL TAKE PRECEDENCE.

REFERENCED GOVERNMENT (OR NON-GOVERNMENT) DOCUMENTS OF THE ISSUE LISTED IN THAT ISSUE OF THE DEPARTMENT OF DEFENSE
INDEX OF SPECIFICATIONS AND STANDARDS (DoDISS) SPECIFIED IN THE SOLICITATION FORM A PART OF THIS STANDARD TO THE
EXTENT SPECIFIED HEREIN.

REVISED
APPROVED 3 APR 1987

<p>P.A. NAVY - AS Other Cust USAF - 11 ARMY - AV</p>	<p>TITLE NUT, SELF-LOCKING, CHANNEL, FLOATING, CARBON STEEL, 125 KSI. Flu</p>	<p>MILITARY STANDARD MS14493</p>
<p>PROCUREMENT SPECIFICATION MIL-N-25027</p>	<p>SUPERSEDES:</p>	<p>SHEET 2 OF 2</p>