

INCH-POUND

MS14305D
 1 November 2015
 SUPERSEDING
 MS14305C
 15 December 2009

DETAIL SPECIFICATION SHEET

FITTINGS, PIPE, BRASS OR BRONZE, THREADED
 (TEES, CROSSES, 45-DEGREE ELBOWS, AND COUPLINGS), CLASS 125

This specification is approved for use by all Departments and
 Agencies of the Department of Defense.

The requirements for acquiring the product described herein shall consist of this specification sheet and
 WW-P-460.

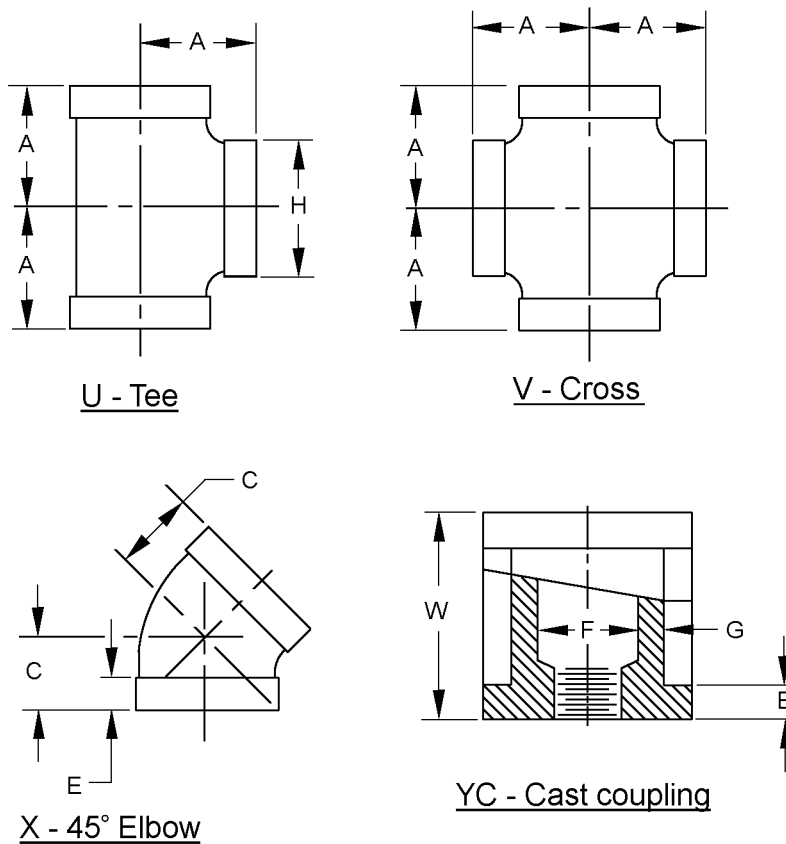
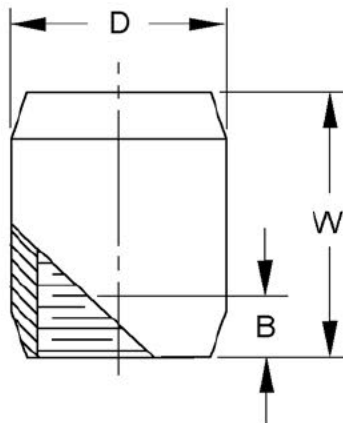


FIGURE 1. Elbows, tees, crosses and coupling fittings.



MS14305D



YW - Wrought Coupling

Dash size and fitting type designators.

Dash number	Pipe size inch (fraction)	mm	Tee U	Cross V	45-Deg elbow X	Cast coupling YC	Wrought coupling YW
-1	1/8 (.125)	3.18	U	V	X	YC	YW
-2	1/4 (.250)	6.35	U	V	X	YC	YW
-3	3/8 (.375)	9.53	U	V	X	YC	YW
-4	1/2 (.500)	12.70	U	V	X	YC	YW
-5	3/4 (.750)	19.05	U	V	X	YC	YW
-6	1 (1.000)	25.40	U	V	X	YC
-7	1-1/4 (1.250)	31.75	U	V	X	YC
-8	1-1/2 (1.500)	38.10	U	V	X	YC
-9	2 (2.000)	50.80	U	V	X	YC
-10	2-1/2 (2.500)	63.50	U	V	X	YC
-11	3 (3.000)	76.20	U	V	X	YC
-12	4 (4.000)	101.60	U	V	X	YC

NOTES:

1. Dimensions are in inches.
2. Metric equivalents are given for information only.
3. Dimensions: In accordance with ASME-B16.15, table titled "Dimensions of 90° Elbows, Tees, Crosses, 45-Deg. Elbows, and Couplings. (Straight Sizes) - Class 125".

FIGURE 1. Elbows, tees, crosses and coupling fittings - Continued.

Requirements

Material:

Non-potable water: Brass or bronze (lead) in accordance with ASME-B16.15.

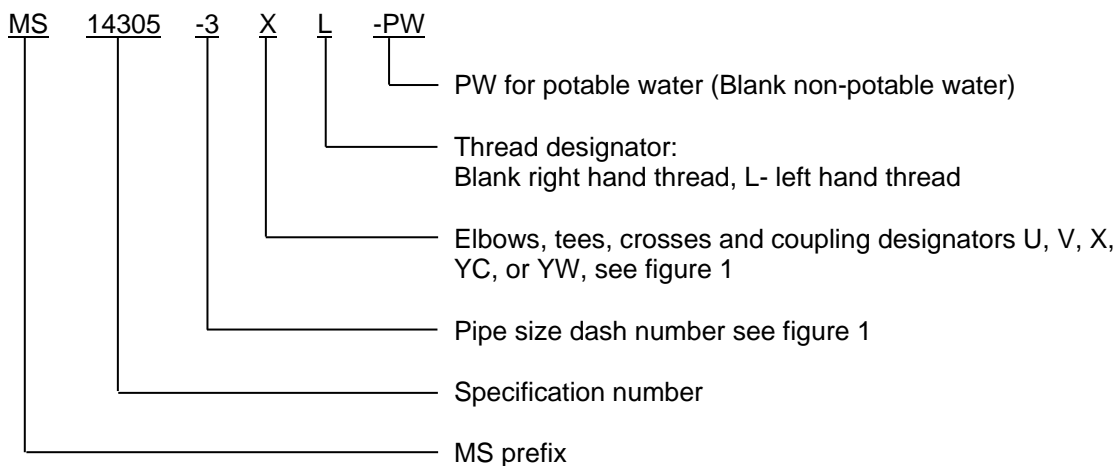
Potable water: Brass alloys C89510 or C89520 in accordance with ASTM B584 or C89550 in accordance with Copper Development Association Inc.

MS14305D

Threads: In accordance with ASME-B16.15.

Protective coating: None.

PIN: The PIN consists of the MS prefix, specification number, dash number for size, 45° elbow, tee, cross or coupling (cast or wrought) designator, right hand thread designator (Blank), non-potable water (Blank) or potable water dash letters (-PW). When left-hand threads are required, add the letter "L" to the PIN.



Examples:

MS14305-6V represents a 1 inch Nominal Pipe Size (NPS) cross, non-potable water.

MS14305-6V-PW represents a 1 inch NPS cross, potable water.

MS14305-5XL represents a 3/4 inch NPS 45° elbow, left-hand threads, non-potable water.

MS14305-2YC represents a 1/4 inch NPS cast coupling, non-potable water.

MS14305-2YC-PW represents a 1/4 inch NPS cast coupling potable water.

Order of precedence. Unless otherwise noted herein or in the contract, in the event of a conflict between the text of this document and the references cited herein, the text of this document takes precedence. Nothing in this document, however, supersedes applicable laws and regulations unless a specific exemption has been obtained.

Referenced documents shall be of the issue in effect on date of invitations for bid.

Brass fittings for potable water use may be substituted for non-potable water brass fittings. Non-potable brass fittings shall not be substituted for potable water fittings.

January 4, 2014, Federal Public Law 111-380 prohibits the sale of plumbing fixtures with a wetted surface area containing more than a weighted average of 0.25% lead.

Marking: In accordance with ASME-B16.15, additional marking for potable water fittings shall be as described.

MS14305D

Potable water fittings. Brass tees, crosses, 45° elbows, and couplings for potable water systems shall be certified and marked as specified:

Many State plumbing codes require the use of products that are in compliance with NSF/ANSI standards 61 and 372. NSF/ANSI Standard 372 is a certification process by which independent laboratories verify that the plumbing product is in compliance with the requirements of the 2011 Reduction of Lead in Drinking Water Act. Products will bear the mark of the laboratory that has independently certified that the product meets the standard. EPA published a brochure to assist the public with identifying the various marks that indicate a product has been certified as lead free to the new requirement of the Act: "How to Identify Lead-Free Certification Marks for Drinking Water System & Plumbing Materials." You can access the document at <http://nepis.epa.gov/Exe/ZyPDF.cgi?Dockkey=P100LVYK.txt>.

Non-potable water fittings. Brass tees, crosses, 45° elbows, and couplings for non-potable water systems shall be tagged:

NOT FOR USE IN POTABLE WATER SYSTEMS

The tag shall be removable by the end item user.

Changes from previous issue. Marginal notations are not used in this revision to identify changes with respect to the previous issue, due to the extent of the changes.

Referenced documents. In addition to WW-P-460, this document references the following:

- Reduction of Lead in Drinking Water Act
- ASME-B16.15
- ASTM B584
- NSF/ANSI Standard 61
- NSF/ANSI Standard 372

CONCLUDING MATERIAL

Custodians:

- Army - AT
- Navy - MC
- Air Force - 99
- DLA - CC

Preparing activity:

DLA - CC

(Project 4730-2015-060)

Review activities:

- Army - AR, CE, EA
- Navy - SA, SH, YD
- Air Force - 71

NOTE: The activities listed above were interested in this document as of the date of this document. Since organizations and responsibilities can change, you should verify the currency of the information above using the ASSIST Online database at <https://assist.dla.mil>.