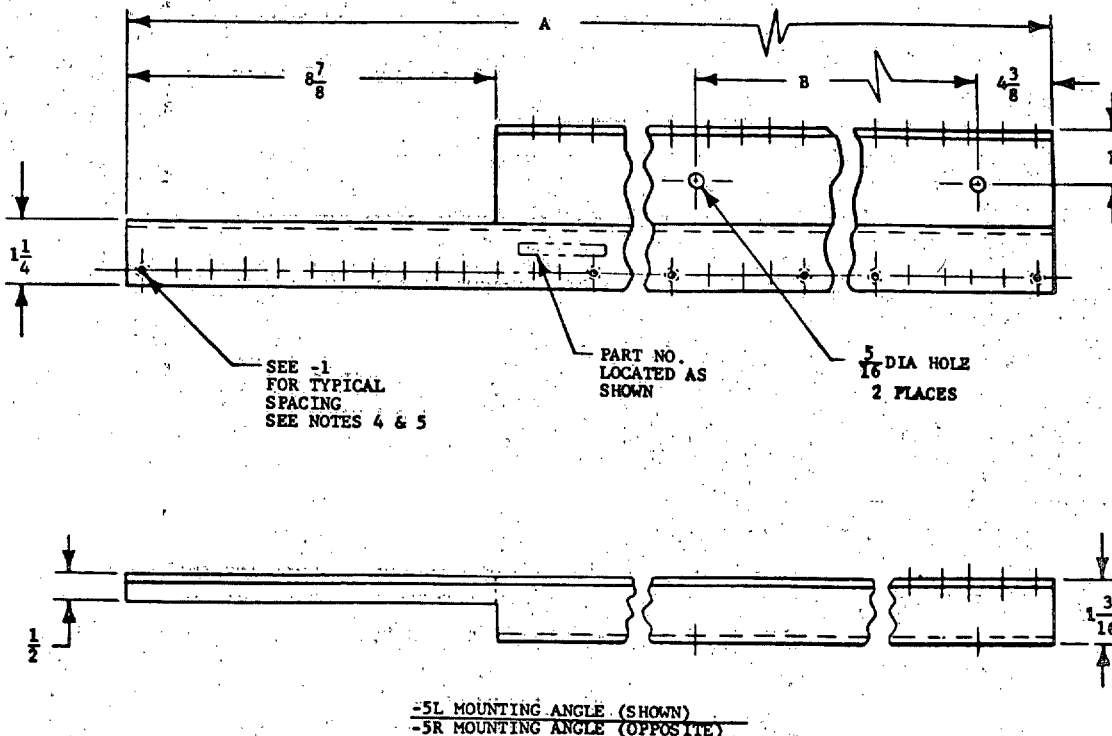




FED. SUP CLASS  
5975

## NOTES:

1. MATERIAL: 11 GA. HRPO STEEL.
2. REMOVE ALL BURRS AND SHARP EDGES.
3. DIMENSIONS IN INCHES, UNLESS OTHERWISE SPECIFIED, TOLERANCES: FRACTIONS;  $\pm 1/32$ . TOLERANCES SHALL NOT BE CUMULATIVE.
4. MOUNTING ANGLE HOLES SHALL BE LOCATED IN ACCORDANCE WITH ELECTRONIC INDUSTRIES ASSOCIATION (EIA) AND WESTERN ELECTRIC (WE) SPACING.
5. THREADS SHALL BE IN ACCORDANCE WITH HANDBOOK H28.
6. EXAMPLE OF PART NUMBER:

MS14137-1 L  
 LEFT HAND MOUNTING ANGLE  
 SIZE DASH NUMBER  
 BASIC PART NUMBER

7. FINISH SHALL BE IN ACCORDANCE WITH MIL-STD-808 AND FED-STD-595, BLACK, COLOR 27038.

FOR DESIGN FEATURE PURPOSES, THIS STANDARD TAKES PRECEDENCE OVER PROCUREMENT DOCUMENTS REFERENCED HEREIN. REFERENCED DOCUMENTS SHALL BE OF THE ISSUE IN EFFECT ON DATE OF INVITATIONS FOR BID.

P.A. NAVY - AS Other Cust	TITLE  ANGLE, MOUNTING	MILITARY STANDARD <b>MS14137(AS)</b>
PROCUREMENT SPECIFICATION	SUPERSEDES	SHEET 2 OF 2

DD FORM 572-1 (Limited coordination)

PREVIOUS EDITIONS OF THIS FORM ARE OBSOLETE.

PLATE NO. 23071

U.S. GOVERNMENT PRINTING OFFICE: 1976-603-766/2325