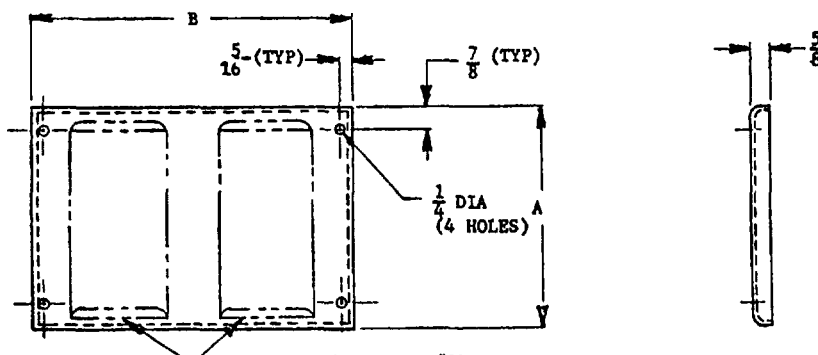


PED. SUP CLASS  
5975

LOUVERS (SEE NOTF #2)

DASH NO.	PLAIN		LOUVERED	
	A	B	A	B
-1	14	19	—	—
-2	—	—	17 1/2	19
-3	70	11 7/8	—	—
-4	12 1/4	19	—	—
-5	17 1/2	19	—	—
-6	19 1/4	19	—	—
-7	10 1/2	19	—	—
-8	7	19	—	—
-9	24 1/4	19	—	—
-10	15 3/4	19	—	—
-11	—	—	17 1/2	24
-12	—	—	21	19
-13	—	—	14	19
-14	1 3/4	19	(SEE SHEET 2)	
-15	—	—	10 1/2	19
-16	5 1/4	19	—	—
-17	(SEE SHEET 2)		17 1/2	11 7/8
-18	1 3/4	24	(SEE SHEET 2)	
-19	8 3/4	19	—	—
-20	3 1/2	19	—	—
-21	5 1/4	12	—	—
-22	7	12	—	—
-23	10 1/2	12	—	—
-24	10 1/2	24	—	—
-25	38 1/2	19	—	—
-26	21	19	—	—
-27	5 1/4	24	—	—
-28	8	19	—	—
-29	4 3/8	19	—	—
-30	14	24	—	—
-31	21	24	—	—
-32	17 1/2	11 7/8	—	—
-33	—	—	74 7/8	21 1/2
-34	3 1/2	24	—	—
-35	—	—	24 1/2	19
-36	14	9 1/2	—	—
-37	5 7/8	19	—	—
-38	8 1/8	19	—	—
-39	4 1/8	19	—	—

FOR DESIGN FEATURE PURPOSES, THIS STANDARD TAKES PRECEDENCE OVER PROCUREMENT DOCUMENTS REFERENCED HEREIN  
REFERENCED DOCUMENTS SHALL BE OF THE ISSUE IN EFFECT OJ DATE OF INVITATIONS FOR BID

D REVISED

P.A. NAVY - AS  
Chief Cust

TITLE

PANEL, FLUSH MOUNTED

MILITARY STANDARD

MS14129(AS)

PROCUREMENT SPECIFICATION

SUPERSEDES

SHEET 1 OF 2

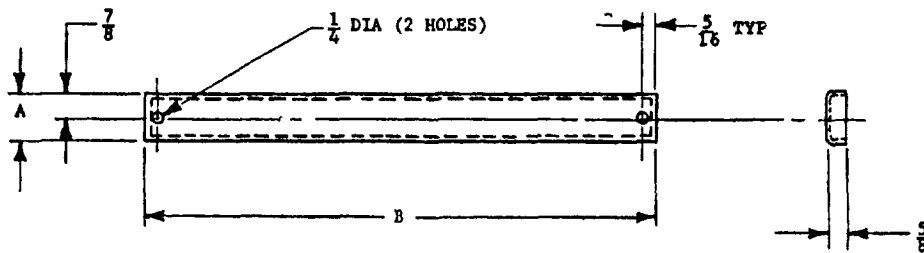
DD FORM 672-1 (Limited coordination)

PREVIOUS EDITIONS OF THIS FORM ARE OBSOLETE

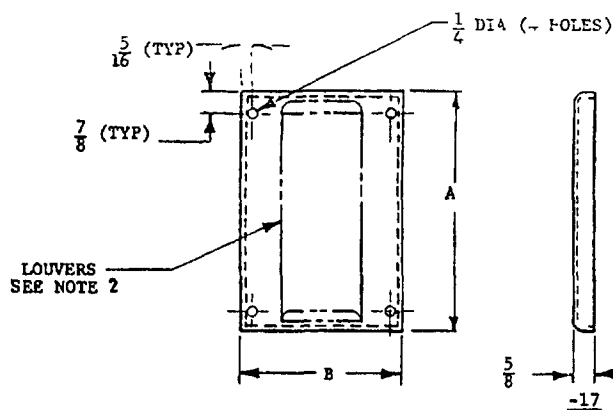
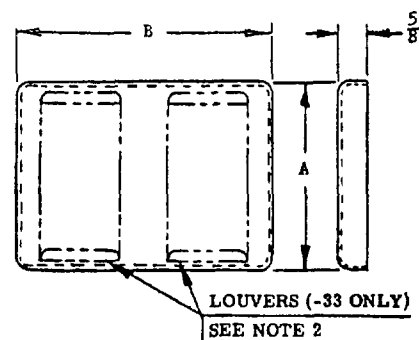
PLATE NO. 23071

This military standard is approved by NAVAL AIR SYSTEMS COMMAND,  
Department of the Navy and shall be used by  
their activity. All other military activities are required  
to employ this standard where suitable

22 AUG 1972  
REVISED A 14 Dec 1973 B 17 JUNE 1974 C 31 JANUARY 1975 D 9 DEC 1975

FED. SUP CLASS  
5975

(D) -14, -18, -36, -37, -38, -39

LOUVERS  
SEE NOTE 2LOUVERS (-33 ONLY)  
SEE NOTE 2

(D) -28 THRU -33, -35

## NOTES

1. MATERIAL SHALL BE 16 GA CRS.
2. PANELS SHALL HAVE A SINGLE OR DOUBLE ROW OF LOUVERS, 6 INCHES WIDE, 3/4 INCH HIGH WITH 1 INCH SPACE BETWEEN LOUVERS. EACH LOUVER SHALL HAVE APPROXIMATELY 1 3/4 SQUARE INCHES OF OPENING.
3. FINISH SHALL BE IN ACCORDANCE WITH MIL-STD-808 AND FED-STD-595 GREEN, COLOR #24300.
4. REMOVE ALL BURRS AND BREAK ALL SHARP EDGES.
5. DIMENSIONS IN INCHES. UNLESS OTHERWISE SPECIFIED, TOLERANCES: FRACTIONS,  $\pm 1/32$ .

REVISED (D) FOR CHANGES SEE SHEETS 1 AND 2

22 AUG 1972

P A NAVY - AS Other Cust	TITLE  PANEL, FLUSH MOUNTED	MILITARY STANDARD	
		MS14129(AS)	
PROCUREMENT SPECIFICATION	SUPERSEDES	SHEET	2 OF 2

DD FORM 672-1 (Limited coordination)

PREVIOUS EDITIONS OF THIS FORM ARE OBSOLETE

PLATE NO. 23071