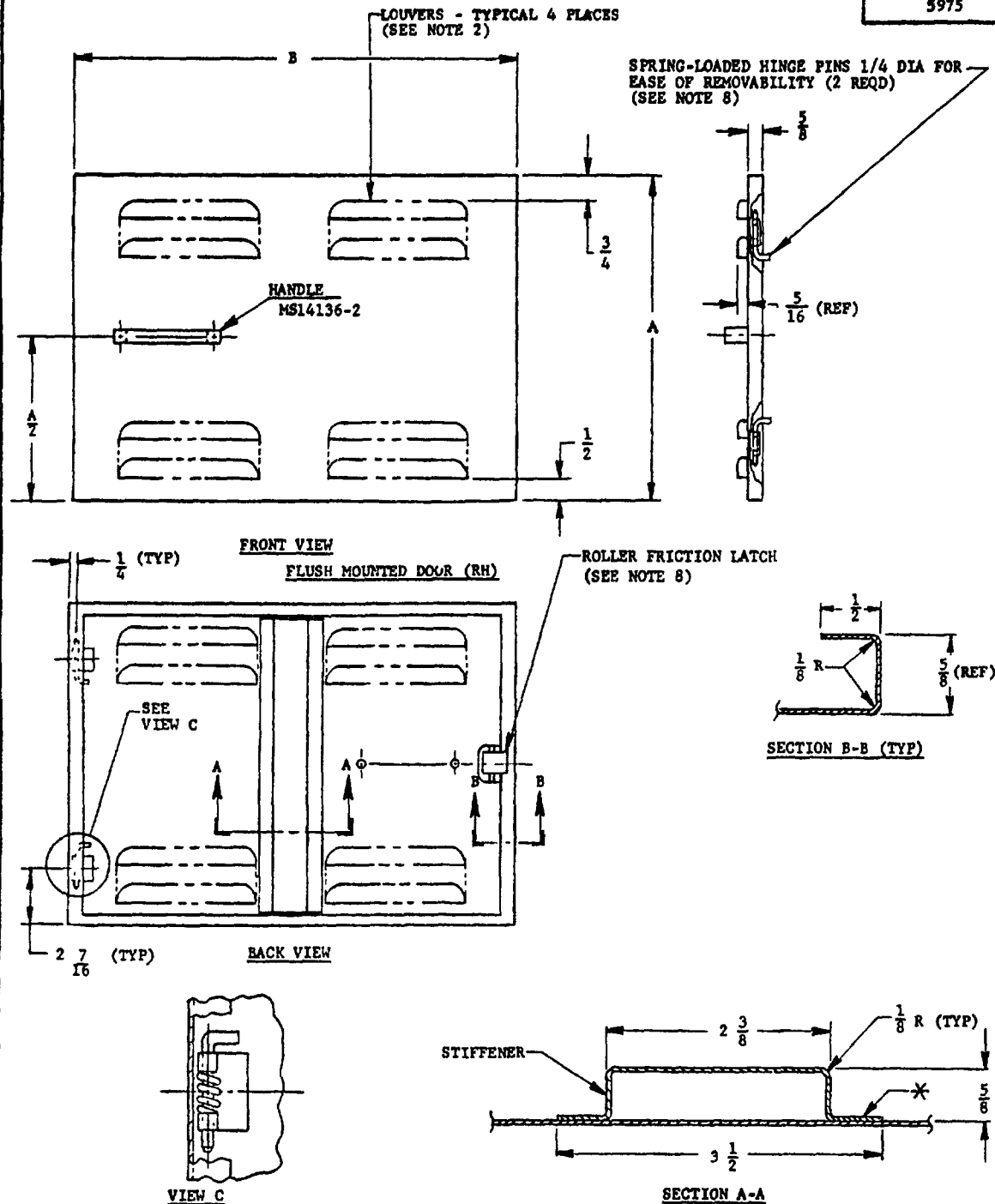


PED. SUP CLASS  
5975

FOR DESIGN FEATURE PURPOSES, THIS STANDARD TAKES PRECEDENCE OVER PROCUREMENT DOCUMENTS REFERENCED HEREIN. REFERENCED DOCUMENTS SHALL BE OF THE ISSUE IN EFFECT ON DATE OF INVITATIONS FOR BID.

(F) REVISED

|                             |                                  |   |
|-----------------------------|----------------------------------|---|
| P A NAVY - AS<br>Other Cust | TITLE<br><br>DOOR, FLUSH MOUNTED | MILITARY STANDARD<br><b>MS14128(AS)</b> |
| PROCUREMENT SPECIFICATION   | SUPERSEDES                       | SHEET 1 OF 2                            |

DD FORM 672-1 (Limited coordination)

PREVIOUS EDITIONS OF THIS FORM ARE OBSOLETE

PROJECT NO 5975-N533

PLATE NO 22071

This military standard is approved by NAVAL AIR SYSTEMS COMMAND, Department of the Navy and shall be used by that activity. All other military activities are required to employ this standard where applicable.

22 AUG 1972  
 REVISED (A) 8 SEP 1972 (B) 30 Nov 1973 (C) 17 JUNE 1974 (D) 31 JANUARY 1975 (E) 9 DEC 1975 (F) 18 FEB 77

FED. SUP CLASS  
5975

| DASH NO. | PLAIN |    | LOUVERED |    |
|----------|-------|----|----------|----|
|          | A     | B  | A        | B  |
| -1 L/R   | —     | —  | 14       | 19 |
| -2 L/R   | 8 3/4 | 19 | —        | —  |
| -3 L/R   | —     | —  | 14       | 24 |
| -4 L/R   | —     | —  | 28       | 19 |
| -5 L/R   | —     | —  | 28       | 24 |
| -6 L/R   | —     | —  | 24 1/2   | 19 |
| -7 L/R   | —     | —  | 70       | 19 |
| -8 L/R   | —     | —  | 21       | 19 |
| -9 L/R   | —     | —  | 21       | 24 |

**NOTES:**

1. MATERIAL: 16 GAUGE STEEL.
2. DOOR WITH LOUVERS SHALL HAVE 2 DOUBLE ROWS OF LOUVERS, 6 INCHES WIDE, 3/4 INCH HIGH WITH 1 INCH SPACE BETWEEN LOUVERS. EACH LOUVER SHALL HAVE APPROXIMATELY 1 3/4 SQUARE INCHES OF OPENING.
3. FINISH: SHALL BE IN ACCORDANCE WITH MIL-STD-808 AND FED-STD-595 GREEN COLOR #24300. HARDWARE SHALL BE IN ACCORDANCE WITH QQ-P-416, TYPE II, CLASS 1, CADMIUM PLATE.
4. REMOVE ALL BURRS AND BREAK ALL SHARP EDGES.
5. DIMENSIONS IN INCHES. UNLESS OTHERWISE SPECIFIED, TOLERANCES: FRACTIONS:  $\pm 1/32$ .
6. EXAMPLE OF PART NUMBER:

MS14128 -1 L  
 ———— LEFT HAND HINGED DOOR  
 ———— SIZE DASH NUMBER  
 ———— BASIC PART NUMBER

7. DOOR SHALL BE OF WELDED CONSTRUCTION. ALL WELDING SHALL BE IN ACCORDANCE WITH MIL-W-8811.
8. DOOR SHALL BE SUPPLIED COMPLETELY ASSEMBLED WITH HANDLE, MS14136-2, LOCK, LATCH, LATCH PLATE, HINGE PINS, HINGE PIN BRACKETS AND ALL NECESSARY HARDWARE TO INSTALL ON VERTICAL AND TURRET PROJECTED TOP RACKS.

|                              |                                  |                   |
|------------------------------|----------------------------------|-------------------|
| P.A. NAVY - AS<br>Other Cust | TITLE<br><br>DOOR, FLUSH MOUNTED | MILITARY STANDARD |
|                              |                                  | MS14128(AS)       |
| PROCUREMENT SPECIFICATION    | SUPERSEDES                       | SHEET 2 OF 2      |