

FED. SUP CLASS  
6760

USER SYMBOLS:

REVIEWER SYMBOLS:

\*Revision/new information is current as of the date of this document.  
For future coordination of changes to this document, draft specifications  
should be based on the information in the current 000113.

This military standard is approved for use by all Departments  
B. Agreement of the Department of Defense. Selection for all new  
engineering and design applications and for repetition use shall  
be made from this document.

## 1. SCOPE

- 1.1 THIS STANDARD PROVIDES THE DIMENSIONS AND SPECIFICATIONS FOR CASSETTES AND REELS TO BE USED WITH COMPATIBLY DESIGNED SUPER 8 GAUGE MOTION-PICTURE PROJECTORS.
- 1.2 FOUR MODELS OF CASSETTES ARE SPECIFIED; MODEL A FOR NOMINAL 50-FOOT SIZE REELS, MODEL B FOR NOMINAL 100-FOOT SIZE REELS, MODEL C FOR NOMINAL 220-FOOT SIZE REELS, AND MODEL D FOR NOMINAL 400-FOOT SIZE REELS. THE CASSETTES SHALL USE SUPER 8 MOTION-PICTURE FILM WITH NOMINAL 50 AND 100-FOOT CAPACITY MOTION PICTURE REELS MEETING THE DIMENSIONAL SPECIFICATIONS OF AMERICAN NATIONAL STANDARD ANSI PH22.160, PROJECTION REELS FOR SUPER 8 MOTION-PICTURE FILM. REELS FOR THE NOMINAL 220-FOOT AND 400-FOOT CASSETTES SHALL MEET THE DIMENSIONAL REQUIREMENTS SPECIFIED IN THIS STANDARD.
- 1.3 A SYSTEM OF CODE NOTCHES TO AUTOMATICALLY CUE PROJECTOR MECHANISM TO NECESSARY SOUND AND SPEED FUNCTIONS IS ALSO SPECIFIED.

## 2. MATERIALS

- 2.1 THE MATERIAL FOR FABRICATION OF THE CASSETTES SHALL BE AS SPECIFIED HEREIN. MATERIALS OTHER THAN THOSE SPECIFIED HEREIN MAY BE USED, PROVIDED THEY MEET THE DIMENSIONAL STABILITY AND IMPACT CHARACTERISTICS OF THE MATERIALS SPECIFIED HEREIN TO AN EQUAL OR BETTER DEGREE.
  - 2.1.1 TRANSPARENT COVERS, A, B, C, AND D. THE MATERIAL SHALL BE MODIFIED ACRYLIC "ACROLITE MP-20-731, BRONZE", SUPPLIED BY AMERICAN CYANAMID CO., SOUTH CHERRY STREET, WALLINGFORD, CONN. 06492
  - 2.1.2 BASES A AND B. THE MATERIAL SHALL BE MODIFIED STYRENE "DYLENE 80, M23452, BLACK", SUPPLIED BY KOPFERS CO., 2112 KOPFERS BLDG., PITTSBURGH, PA 15219.
  - 2.1.3 BACKS C AND D. THE MATERIAL SHALL BE GLASS FILLED SAN "ACRYLASAR J40-20, BLACK, BK219" SUPPLIED BY FIBERFIL, 1701 NO. HEIDELBACH, EVANSVILLE, IND. 47717.
  - 2.1.4 REEL CORES C AND D. THE MATERIAL SHALL BE PLATABLE ABS "CYCOLAC EP3510" SUPPLIED BY MARBON CHEMICAL CO., WASHINGTON, W. VA. PART SHALL BE ELECTROLYSIS PLATED WITH NICKEL.
  - 2.1.5 REEL FLANGES C AND D. THE MATERIAL SHALL BE 0.030 ALUMINUM ALLOY, 5052-H23, PRECOATED BOTH SIDES WITH GRAY ACRYLIC ENAMEL, SUPPLIED BY ALUMINUM CO. OF AMERICA, 1219 ALCOA BLDG., PITTSBURGH, PA. 15219. PARTS SHALL BE TEFLON COATED ON ONE SIDE (INNER SURFACES).

(COPIES OF THE TECHNICAL SPECIFICATIONS FOR THE MATERIALS LISTED SHOULD BE OBTAINED FROM THE IDENTIFIED SUPPLIERS.)

## 3. DIMENSIONS

- 3.1 DIMENSIONS SHALL BE AS SHOWN IN THE FIGURES AND GIVEN IN THE TABLES. IN SOME CASES MILLIMETER VALUES ARE NOT DIRECT CONVERSIONS OF INCH VALUES TO FACILITATE COMPATIBLE SPECIFICATIONS IN INTERNATIONAL RECOMMENDATIONS. THESE DIMENSIONS ARE NOTED IN THE TABLES AND THE INCH VALUES ARE THEN DIRECT CONVERSIONS FROM THE MILLIMETER VALUES, ALSO, WHERE NECESSARY, MILLIMETER VALUES ARE CARRIED AN EXTRA DECIMAL PLACE BEYOND USUAL PRACTICE.

APPROVED 1 APR 1974 REVISED

P.A. NAVY - AS Other Code	TITLE  CASSETTES AND REELS, PROJECTION, MOTION-PICTURE, SUPER 8mm	MILITARY STANDARD	
		MS14115	
ARMY - EL AIR FORCE - 70	PROCUREMENT SPECIFICATION	SHEET 1	OF 27

FED. SUP CLASS  
6760

USER SYMBOLS:

REVIEWER SYMBOLS:

\*Revision/user information is current as of the date of this document.  
For future coordination of changes to this document, draft circulation  
should be based on the information in the current DDISS.

This military standard is approved for use by all Departments  
in Agencies of the Department of Defense. Selection for all new  
engineering and design applications and for replacing one shall  
be made from this document.

- 3.2 THE DIMENSIONS AND ILLUSTRATIONS IN THE FIGURES DO NOT RESTRICT THE AXIAL ORIENTATION OF THE CASSETTES IN USE (VERTICAL, HORIZONTAL, ETC.).
- 3.3 THE CASSETTE MOUNTING AND LATCHING SURFACES FOR MODEL A AND B ARE IDENTICAL WITH SOME OF THE DIMENSIONS COMMON IN THE A, B, C, AND D CASSETTES TO PROVIDE COMPATIBLE MOUNTING.
- 3.4 THE DATUM PLANES X, Y, AND Z USED FOR DIMENSIONING ARE MUTUALLY PERPENDICULAR.
- 3.4.1 DATUM PLANE X. DATUM PLANE X IS A PLANE FORMED BY TARGET POINTS  $X_1$  AND  $X_2$ .
- 3.4.2 DATUM PLANE Y. DATUM PLANE Y IS A PLANE COINCIDENT WITH TARGET POINT  $Y_1$ .
- 3.4.3 DATUM PLANE Z. DATUM PLANE Z IS A PLANE FORMED BY TARGET POINTS  $Z_1$ ,  $Z_2$ , AND  $Z_3$ . TARGET POINTS  $Z_1$  AND  $Z_2$  ARE COINCIDENT WITH CASSETTE MOUNTING SURFACE AND  $Z_3$  COINCIDENT WITH A POINT, LOCATED BY A GAUGE BALL OF  $C_4$  DIAMETER, ABOVE MOUNTING RAIL.
- 3.5 THE POINTS USED TO ESTABLISH DATUM PLANES X, Y, AND Z, MAY BE USED FOR GAUGING THE CASSETTE.
- 3.6 MOST OF THE CASSETTES' EXTERNAL DIMENSIONS SHOWN IN FIGURES 3, 4, 8, AND 9 ARE PROVIDED THE MAXIMUM SPACE CONFIGURATION NEEDED IN THE DESIGN OF CASSETTE-COMPATIBLE PROJECTORS. THESE MAXIMUM SPECIFICATIONS ARE NEEDED TO PROVIDE FLEXIBILITY IN THE DESIGN OF EXTERNAL CASSETTE CONFIGURATIONS AND ARE NOT TO BE TAKEN AS RESTRICTIONS.
- 3.7 NOTCHES TO AUTOMATICALLY CUE PROJECTORS TO NECESSARY FRAME RATE AND SOUND FUNCTIONS ARE AS SHOWN IN FIGURE 5 BY DIMENSIONS  $K_1$  THROUGH  $K_6$ .
- 3.7.1 TWO ROWS OF NOTCHES 1 THROUGH 4 ARE PROVIDED. THE DEPTH OF THE FIRST ROW IS ESTABLISHED BY DIMENSIONS  $K_2$  AND OF THE SECOND ROW BY DIMENSION  $K_1$ .
- 3.7.2 THE SECOND ROW OF NOTCHES IS USED ONLY IN CONJUNCTION WITH THE FIRST ROW AND WHEN USED, THE POSITION IS REFERRED TO AS "DOUBLE NOTCHED."
- 3.7.3 COMPLETE REMOVAL OF MATERIAL SHOULD BE MADE WHEN ADJACENT NOTCHES ARE USED.
- 3.7.4 NOTCH FUNCTIONS ARE AS FOLLOWS: (SEE FIGURE 5.)

POSITION	1	2	3	4
NO NOTCH	PLAYBACK	18 FPS	SILENT	
NOTCH	RECORD	24 FPS	MAGNETIC SOUND	

APPROVED 1 APR 1974 REVISED

P.A. NAVY - AS Other Cust	TITLE  CASSETTES AND REELS, PROJECTION, MOTION-PICTURE, SUPER 8mm	MILITARY STANDARD	
		MS14115	
ARMY - EL AIR FORCE - 70	PROCUREMENT SPECIFICATION	SUPERSEDES.	SHEET 2 OF 27

FED. SUP CLASS  
6760

USER SYMBOLS:

REVIEWER SYMBOLS:

"Anytime/new information is current as of the date of this document.  
For future consideration of changes to this document, draft alterations  
should be based on the information in the current document."

This military standard is approved for use by all Departments  
of the Department of Defense. Selection for all new  
engineering and design applications and for reissuing and shall  
be made from this document.

- 3.8 THE CASSETTE ORIENTING NOTCH (FIGURE 1) ESTABLISHED BY A<sub>9</sub>, A<sub>10</sub>, AND A<sub>21</sub> MAY HAVE A RADIUS IN THE UPPER INSIDE CORNERS WITH A MAXIMUM VALUE EQUAL TO ONE-HALF THE DIFFERENCE BETWEEN A<sub>10</sub> AND A<sub>9</sub>.
- 3.9 ALL MOUNTING AND GAUGING SURFACES SHOWN IN FIGURE 1 ARE TO BE PLANES BUT MAY BE FORMED BY BOSSES OR PADS AND THEY NEED NOT BE CONTINUOUS. LATCHING CUTOUT AREAS ARE ALSO SHOWN IN FIGURE 1.
- 3.9.1 LATCHING CUTOUT AREAS ARE ESTABLISHED BY DIMENSIONS A<sub>2</sub>, A<sub>16</sub>, A<sub>17</sub>, AND A<sub>11</sub> AND THE LATCHING POINTS BY DIMENSIONS B<sub>2</sub>, B<sub>4</sub> THROUGH B<sub>10</sub>. THE OVERALL WIDTH OF THE CASSETTE, DIMENSION B<sub>3</sub>, MAY ALSO BE USED AS A LATCHING SURFACE. THE REMAINING DIMENSIONS ESTABLISH THE MOUNTING AND GAUGING SURFACES.
- 3.10 THE ANGLE SPECIFIED BY DIMENSIONS E<sub>5</sub> AND C<sub>7</sub> IN FIGURES 2 AND 3 APPLY TO ALL FOUR CORNERS OF THE OPENING.
- 3.11 THE WIDTH OF THE FILM GUIDE IS DEFINED BY DIMENSIONS E<sub>2</sub>, E<sub>9</sub>, D<sub>7</sub>, AND D<sub>8</sub> AND THE TRANSITION MUST BE SMOOTH. THIS CONDITION APPLIES TO THE A, B, C, AND D CASSETTE SIZES. (SEE FIGURE 2.)
- 3.12 THE DIMENSIONS SPECIFIED IN FIGURE 12 APPLY TO THE SIZE NUMBER 15 REEL OF 220-FOOT CAPACITY FOR USE WITH MODEL C CASSETTES, AND SIZE NUMBER 19 REEL OF 400-FOOT CAPACITY FOR USE WITH MODEL D CASSETTES. REEL DIMENSIONS FOR MODEL A AND MODEL B CASSETTES ARE SPECIFIED IN ANSI PH22.160.
- 3.13 DIMENSION HH APPLIES FROM THE SURFACE OF THE HUB TO THE PERIPHERY OF THE FLANGES. (SEE FIGURE 12.)
- 3.14 THE MINIMUM DIMENSION KK REPRESENTS THE DIAMETER OF THE CENTRAL PORTION OF THE REEL CENTERED ON THE SPINDLE HOLE AXIS, OVER WHICH THE EFFECTIVE CENTRAL THICKNESS JJ OF THE REEL IS INTENDED TO APPLY. (SEE FIGURE 12.)
- 3.15 THE MAXIMUM VOLUME DURING ROTATION IS MEASURED WITH A TIGHT FITTING TEST SPINDLE WHICH LOCATES ON THE KK DIAMETER (SOLID FLANGE SIDE) BY MEANS OF A SHOULDER OR FLANGE 0.75 INCH (19.05MM) IN DIAMETER. THE REFERENCE PLANE OF ROTATION FOR BOTH FLANGES IS A PLANE PERPENDICULAR TO DATUM CYLINDER A. (SEE FIGURE 12.)
- 3.16 THE CONCENTRICITY OF THE SPINDLE HOLE CC AND HUB EE IS DETERMINED AS A RUN OUT SPECIFICATION BY DIMENSION U. A SIMILAR ALLOWANCE IS PROVIDED FOR THE CONCENTRICITY OF THE SPINDLE HOLE AND THE FLANGES IN THE MAXIMUM VOLUME OF ROTATION DIAGRAM BY HAVING DIMENSION V EXCEED DIMENSION M MAXIMUM BY 0.031 INCH (0.80MM). (SEE FIGURE 12.)

## 4. NOTES

- 4.1 THE INTERNAL DIMENSIONS OF THE A AND B CASSETTES PROVIDE SPACE FOR REELS CONFORMING WITH THE SPECIFICATIONS OF ANSI PH22.160 FOR SUPER 8 HAVING NOMINAL CAPACITIES OF 50 AND 100 FEET. THE C AND D 220-FOOT AND 400-FOOT CAPACITY CASSETTES PROVIDE SPACE FOR REELS CONFORMING TO THE DIMENSIONS SPECIFIED HEREIN.

APPROVED 1 APR 1974 REVISED

P.A. NAVY - AS Other Cont  ARMY - EL AIR FORCE - 70	TITLE  CASSETTES AND REELS, PROJECTION, MOTION-PICTURE, SUPER 8mm	MILITARY STANDARD  MS14115
PROCUREMENT SPECIFICATION	SUPERSEDES:	SHEET 3 OF 27

USER SYMBOLS:

REVIEWER SYMBOLS:

"Review/audit information is current as of the date of this document. For future identification of changes in this document, draft circulation should be based on the information in the current 000135."

This military standard is approved for use by all Departments & Agencies of the Department of Defense. Solicitation for all new engineering and design applications and for resupply use shall be made from this document.

FED. SUP CLASS  
6760

- 4.2 ALL LATCHING AND MOUNTING PROVISIONS MUST BE INCLUDED IN THE CASSETTE, ALTHOUGH THE COMBINATIONS USED BY THE PROJECTOR MECHANISM ARE OPTIONAL.
- 4.3 THE AREA ESTABLISHED BY A27, A28, AND A29 (FIGURE 1) PROVIDES A MOUNTING SURFACE COPLANAR WITH DATUM PLANE Z.
- 4.4 ANY ATTACHED LABELS OR SEALS MUST FALL WITHIN THE EXTERNAL DIMENSIONS ESTABLISHED FOR THE CASSETTE.
- 4.5 REELS MADE ACCORDING TO THIS STANDARD SHALL ALSO BE PROVIDED WITH A MEANS OF SECURING THE FULL-WIDTH END OF THE FILM TO THE REEL. THIS MAY BE ACCOMPLISHED BY A SLOT IN THE REEL HUB AND A MINIMUM CUTOUT AREA (AS SPECIFIED IN PH22.160) AND THE USE OF THE FILM RETENTION PLUG OR CLIP, OR BY A UNIQUE DESIGN.
- 4.6 THE FLANGES OF THE REEL SHOULD HAVE THREE RADIAL DRIVING SLOTS PLACED AT APPROXIMATELY 120 DEGREES AND CONFORMING TO DIMENSIONS D AND B SPECIFIED IN FIGURE 12 AND TABLE XIII. THE DRIVE SLOTS OF BOTH FLANGES ARE ALIGNED. IF PROPERLY ALIGNED, THE REEL WILL FIT ON A TEST SPINDLE (GAUGE) OF 0.50 INCH (12.7mm) DIAMETER WITH A RADIAL SPINDLE DRIVE KEY HAVING AN AXIAL LENGTH FROM THE SPINDLE SHOULDER GREATER THAN THE WIDTH J OF THE REEL; A THICKNESS OF 0.058 INCH (1.47mm); AND A HEIGHT, MEASURED AS A RADIUS FROM THE SPINDLE AXIS, OF 0.36 INCH (9.1mm).
- 4.7 THE EMPTY WEIGHT OF EITHER REEL SHALL NOT EXCEED 200 GRAMS.
- 4.8 TO REDUCE FRICTIONAL FORCES FROM STATIC BUILDUP, THE FLANGES AND THE CORE OF THE REEL SHALL BE CONDUCTIVE FOR STATIC ELIMINATION.
- 4.9 ONE FLANGE SHALL BE MADE SOLID WITH THE EXCEPTION OF THE HUB AREA AND IDENTIFYING HOLES (SEE 4.10.1). THIS FLANGE SHALL BE THE ONE CLOSEST TO THE UNPERFORATED SIDE OF THE FILM WHEN WOUND IN THE USUAL MANNER.
- 4.10 TO PROVIDE INFORMATION FOR THE DESIGN OF COMPATIBLE PROJECTOR FILM EXTRACTOR MECHANISMS AND TO MINIMIZE THE POSSIBILITIES OF INTERFERENCE WITH THE INTERNAL FILM GUIDE RAIL, FILM QUANTITY LOADS SHOULD FALL WITHIN 1.626 INCH (41.30mm) MINIMUM DIAMETER FOR MODELS A AND B, 2.600 INCH (66.05mm) MAXIMUM DIAMETER FOR MODEL A, AND 3.559 INCH (90.40mm) MAXIMUM DIAMETER FOR MODEL B, 3.700 INCH (93.98mm) MINIMUM DIAMETER FOR MODEL C, 4.900 INCH (124.46mm) MINIMUM DIAMETER FOR MODEL D, 5.600 INCH (142.24mm) MAXIMUM DIAMETER FOR MODEL C, AND 7.070 INCH (179.58mm) MAXIMUM DIAMETER FOR MODEL D.
- 4.10.1 SOME VISIBLE MEANS OF IDENTIFYING THE MAXIMUM DIAMETER OF THE WOUND FILM SHALL BE PROVIDED ON ONE OR BOTH FLANGES.
- 4.10.2 IF OPAQUE MATERIALS ARE USED FOR THE FLANGES AND A HOLE IS NECESSARY FOR SUCH IDENTIFICATION THE HOLES SHALL NOT BE LARGE ENOUGH TO ALLOW FILM TO PROTRUDE THROUGH IT.

P.A.  
NAVY - AS.  
Other Cust

ARMY - EL  
AIR FORCE - 70

TITLE

CASSETTES AND REELS, PROJECTION,  
MOTION-PICTURE, SUPER 8mm

MILITARY STANDARD

MS14115

PROCUREMENT SPECIFICATION

SUPERSEDES:

SHEET 4 OF 27

DD FORM 672-1 (Coordinated)

PREVIOUS EDITIONS OF THIS FORM ARE OBSOLETE.

PLATE NO. 13008

APPROVED 1 APR 1974 REVISED

USE SYMBOLS:

REVIEWER SYMBOLS:

"Section/row information is correct as of the date of this document.  
For future identification of changes in this document, draft circulation  
should be based on the information in the current DD0115."

This military standard is approved for use by all Departments  
of the Department of Defense. Selection for all use  
engineering and design organizations and for repetition etc shall  
be made from this document.

FED. SUP CLASS  
6760

- 4.11 TO FACILITATE THREADING AND TO INSURE PROJECTION OF THE FINAL FRAME OF PICTURE INFORMATION BEFORE REWINDING, THE FOLLOWING LEADER AND TRAILER LENGTHS ARE REQUIRED: LEADER FOR A AND B, 168 FRAMES (28 INCHES, 711mm); FOR C, 216 FRAMES (36 INCHES, 913mm); FOR D, 278 FRAMES (38 INCHES, 963mm); TRAILER, FOR ALL CASSETTES, 118 FRAMES (19.69 INCHES, 500.00mm).
- 4.12 IF HEAVY MATERIALS ARE USED FOR REEL CONSTRUCTION, CAUTION SHOULD BE EXERCISED THAT THE MOMENT OF INERTIA DOES NOT EXCEED  $10 \times 10^{-2}$  OUNCE INCH/SECONDS<sup>2</sup>.
- 4.13 REFERENCED DOCUMENTS SHALL BE OF THE ISSUE IN EFFECT ON DATE OF INVITATION FOR BIDS.  
(AMERICAN NATIONAL STANDARDS MAY BE OBTAINED FROM THE AMERICAN NATIONAL STANDARDS INSTITUTE, INC., 1430 BROADWAY, NEW YORK, NEW YORK, 10018)
- 4.14 THE GOVERNMENT HAS A PAID UPLICENSE UNDER U.S. LETTERS PATENTS 3,463,409; 3,547,373; 3,554,462; 3,491,965; 3,463,411; 3,506,212; 3,465,980; 3,486,710; 3,617,013; 3,448,952; DES. 215,359; DES. 215,361; DES. 215,360; DES. 217,298; DES. 217,299; DES. 217,300; DES. 217,301; DES. 217,302; AND DES. 217,303; AND U.S. APPLICATION FOR LETTERS PATENT SERIAL NO. 9,292 FILED 6 FEBRUARY 1970 FOR THE BENEFIT OF MANUFACTURERS OF THE ITEMS DISCLOSED HEREIN EITHER FOR THE GOVERNMENT OR FOR USE IN EQUIPMENT TO BE DELIVERED TO THE GOVERNMENT.
- 4.15 MARKING. - CASSETTES AND REELS SHALL BE MARKED WITH THE NUMBER OF THIS STANDARD, FOLLOWED BY THE DASH LETTER CORRESPONDING TO THE MODEL OF CASSETTE SPECIFIED HEREIN FOR EACH OF THE RESPECTIVE FILM CAPACITIES, AND WITH THE MANUFACTURER'S NAME, REGISTERED TRADE MARK, OR THE FEDERAL SUPPLY CODE FOR MANUFACTURER'S. MARKING SHALL BE PERMANENTLY AND LEGIBLY STAMPED, STENCILED, OR MOLDED ONTO AN EASILY VISIBLE SURFACE OF THE REEL AND CASSETTE IN A MANNER NOT TO INTERFERE WITH THE FUNCTIONAL OPERATION OF THE CASSETTE.

CUSTODIANS:  
ARMY - EL  
NAVY - AS  
AIR FORCE - 70

PREPARING ACTIVITY:  
NAVY - AS

PROJECT NUMBER: 6760-0547

REVIEW ACTIVITIES:  
ARMY - EL  
NAVY - AS  
AIR FORCE - 70

USER ACTIVITIES:  
NAVY - AS  
AIR FORCE - 70

APPROVED 1 APR 1974 REVISED

P.A. NAVY - AS Other Cost	TITLE	MILITARY STANDARD
ARMY - EL AIR FORCE - 70	CASSETTES AND REELS, PROJECTION, MOTION-PICTURE, SUPER 8	MS14115
PROCUREMENT SPECIFICATION	SUPERSEDED	SHEET 5 OF 27

USER SYMBOLS:

REVIEWER SYMBOLS:

"Baseline" information is current as of the date of this document.  
For future coordination of changes to this document, draft circulation  
should be based on the information in the current DODISS.

This military standard is approved for use by all Departments  
& Agencies of the Department of Defense. Solicitation for all new  
engineering and design applications and for repetitive use shall  
be made from this document.

TABLE I				FED. SUP CLASS 6760	
INCHES		MILLIMETERS			
A <sub>1</sub>	0.330 BASIC			8.38 BASIC	
A <sub>2</sub>	0.250 ± 0.007			6.35 ± 0.20	
A <sub>3</sub>	0.327 MIN	0.333 MAX		8.30 MIN	8.45 MAX
A <sub>4</sub>	1.750 BASIC			44.45 BASIC	
A <sub>5</sub>	0.179 MIN	0.238 MAX		4.55 MIN	6.05 MAX
A <sub>6</sub>	0.131 MIN	0.144 MAX		3.35 MIN	3.65 MAX
A <sub>7</sub>	0.075 MIN			1.90 MIN *	
A <sub>8</sub>	0.148 MIN	0.154 MAX		3.75 MIN	3.90 MAX
A <sub>9</sub>	2.636 MAX			66.95 MAX	
A <sub>10</sub>	2.799 MIN			71.10 MIN *	
A <sub>11</sub>	0.010 MIN	0.014 MAX		0.26 MIN	0.35 MAX
A <sub>12</sub>	3.006 MIN			76.35 MIN	
A <sub>13</sub>	1.577 BASIC			40.056 BASIC **	
A <sub>14</sub>	3.162 MAX			80.30 MAX	
A <sub>15</sub>	2.994 MIN			76.05 MIN	
A <sub>16</sub>	0.378 ± 0.008			9.60 ± 0.20	
A <sub>17</sub>	1.191 ± 0.006			30.25 ± 0.15	
A <sub>18</sub>	1.390 MIN	1.437 MAX		35.30 MIN	36.50 MAX
A <sub>19</sub>	1.417 MIN	1.512 MAX		36.00 MIN	38.40 MAX
A <sub>20</sub>	1.512 MAX			38.40 MAX	
A <sub>21</sub>	1.8 MAX			45.7 MAX	
A <sub>22</sub>	2.777 ± 0.008			70.55 ± 0.20 *	
A <sub>23</sub>	3.150 MAX			80.00 MAX	
A <sub>24</sub>	1.642 MIN			41.70 MIN	
A <sub>25</sub>	1.642 MIN	1.740 MAX		41.70 MIN	44.20 MAX
A <sub>26</sub>	0.342 MIN	0.358 MAX		8.70 MIN	9.10 MAX

P.A. NAVY - AS Other Cust	TITLE	MILITARY STANDARD
ARMY - EL AIR FORCE - 70	CASSETTES AND REELS, PROJECTION, MOTION-PICTURE, SUPER 8mm	MS14115
PROCUREMENT SPECIFICATION	SUPERSEDES:	SHEET 6 OF 27

APPROVED 1 APR 1974 REVISED

APPROVED 1 APR 1974 REVISED

FED. SUP CLASS  
6760TABLE 1  
(CONTINUED)

	INCHES		MILLIMETERS	
A <sub>27</sub>	0.563 MIN	0.593 MAX	14.30 MIN*	15.05 MAX*
A <sub>28</sub>	1.179 MIN	1.201 MAX	29.95 MIN	30.50 MAX
A <sub>29</sub>	2.563 MIN	2.598 MAX	65.10 MIN	66.00 MAX
A <sub>30</sub>	2.071 MIN	2.091 MAX	52.60 MIN	53.10 MAX
B <sub>1</sub>	0.507 REFERENCE		12.878 REFERENCE **	
B <sub>2</sub>	0.043 MIN	0.063 MAX	1.10 MIN	1.60 MAX
B <sub>3</sub>	0.910 MIN	0.941 MAX	23.10 MIN	23.90 MAX
B <sub>4</sub>	0.230 MIN		5.85 MIN	
B <sub>5</sub>	0.096 MIN		2.45 MIN	
B <sub>6</sub>	45° ± 2°		45° ± 2°	
B <sub>7</sub>	10° ± 1°		10° ± 1°	
B <sub>8</sub>	0.014 MAX		0.35 MAX	
B <sub>9</sub>	0.114 MIN	0.124 MAX	2.90 MIN	3.15 MAX
B <sub>10</sub>	0.120 MIN		3.05 MIN	
B <sub>11</sub>	0.199 MIN	0.213 MAX	5.05 MIN	5.40 MAX
B <sub>12</sub>	5° ± 1°		5° ± 1°	
C <sub>1</sub>	0.063 BASIC		1.60 BASIC	
C <sub>2</sub>	0.122 MIN	0.138 MAX	3.10 MIN	3.50 MAX
C <sub>3</sub>	0.063 BASIC		1.60 BASIC	
C <sub>4</sub>	0.014 DIA BASIC		0.356 DIA ** BASIC	
C <sub>5</sub>	0.421 MAX		10.70 MAX	
C <sub>6</sub>	0.587 MIN		14.90 MIN	
*	TO FACILITATE COMPATIBLE ISO DOCUMENTS, CONVERSION VALUE ESTABLISHED AS IF MILLIMETERS WERE PRIMARY.			
**	ADDITIONAL DECIMAL PLACE INTENTIONAL.			

USER SYMBOLS:

REVIEWER SYMBOLS:

\* Baseline information is correct as of the date of this document.  
For future coordination of changes in this document, draft amendment  
should be based on the information in the current DDG155.

This military standard is approved for use by all Departments  
of the Department of Defense. Selection for all new  
engineering and design applications and for existing use shall  
be made from this document.

P.A.  
NAVY - AS  
Other CostARMY - EL  
AIR FORCE - 70

PROCUREMENT SPECIFICATION

TITLE

CASSETTES AND REELS, PROJECTION,  
MOTION-PICTURE, SUPER 8mm

SUPERSEDES:

MILITARY STANDARD

MS14115

SHEET 7 OF 27

APPROVED 1 APR 1974 REVISED

FED. SUP CLASS  
6760

USER SYMBOLS:

REVIEWER SYMBOLS:

"Review/user information is current as of the date of this document. For future coordination of changes to this document, draft circulation should be based on the information in this current DD Form 155."

This military standard is approved for use by all Departments & Agencies of the Department of Defense. Selection for all new engineering and design applications and for repetitive use shall be made from this document.

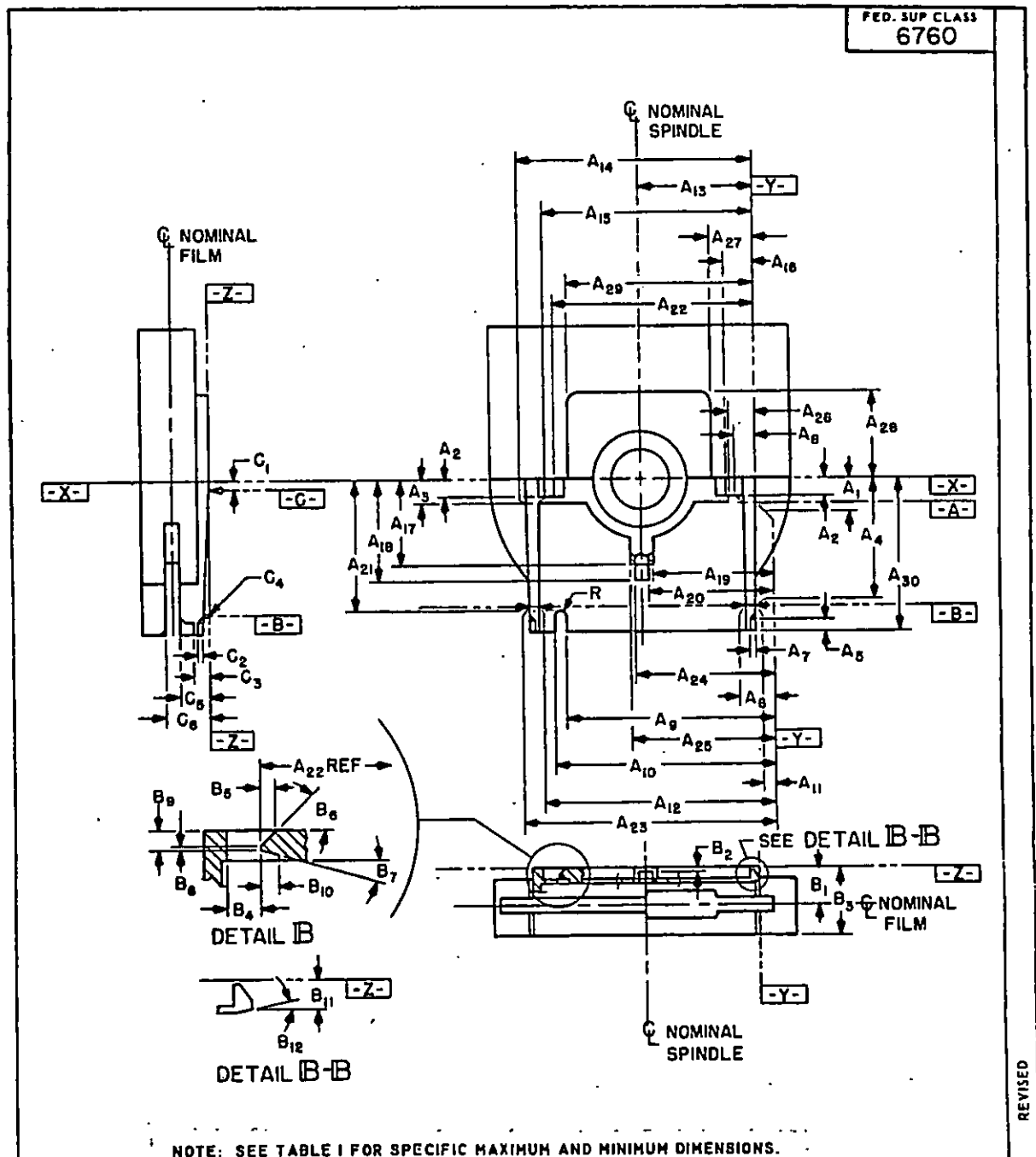


Fig. 1

### MOUNTING, LATCHING, & DATUM DIMENSIONS

#### Cassette Models A & B

P.A. NAVY - AS Other Cust ARMY EL AIR FORCE 70	TITLE  CASSETTES and REELS, PROJECTION, MOTION-PICTURE, SUPER 8mm	MILITARY STANDARD  MS 14115
PROCUREMENT SPECIFICATION NONE	SUPERSEDES:	SHEET 8 OF 27

DD FORM 155 672-1 (Coordinated)

PREVIOUS EDITIONS OF THIS FORM ARE OBSOLETE.

PLATE 155 672-1

APPROVED 1 APR 1974 REVISED



FED. SUP CLASS  
6760

TABLE II

INCHES		MILLIMETERS	
D <sub>1</sub>	0.370 MIN 0.386 MAX	9.40 MIN 9.80 MAX	
D <sub>2</sub>	1.872 MIN 1.911 MAX	47.53 MIN 48.55 MAX	
D <sub>3</sub>	2.025 MIN RADIUS	51.45 MIN RADIUS	
D <sub>4</sub>	1.850 MIN 1.870 MAX RADIUS	47.00 MIN 47.50 MAX RADIUS	
D <sub>5</sub>	1.071 MIN 1.089 MAX	27.20 MIN 27.65 MAX	
D <sub>6</sub>	0.620 MIN 0.640 MAX	15.75 MIN 16.25 MAX	
D <sub>7</sub> ***	0.396 MIN 0.410 MAX	10.05 MIN*	10.40 MAX*
D <sub>8</sub> ***	0.594 MIN 0.622 MAX	15.10 MIN	15.80 MAX
E <sub>1</sub>	VALUE OMITTED		
E <sub>2</sub>	0.374 MIN 0.390 MAX	9.50 MIN 9.90 MAX	
E <sub>3</sub>	0.309 MIN 0.325 MAX	7.85 MIN 8.25 MAX	
E <sub>4</sub>	0.224 MAX	5.70 MAX	
E <sub>5</sub>	15° ± 2°	15° ± 2°	
E <sub>6</sub>	0.567 MIN 0.587 MAX	14.40 MIN 14.90 MAX	
E <sub>7</sub>	0.571 MIN	14.50 MIN	
E <sub>8</sub>	0.683 MIN 0.707 MAX	17.25 MIN 17.95 MAX	
E <sub>9</sub>	0.620 MIN 0.642 MAX	15.75 MIN 16.30 MAX	

\* TO FACILITATE COMPATIBLE ISO DOCUMENTS, CONVERSION VALUE ESTABLISHED AS IF MILLIMETERS WERE PRIMARY.

\*\*\* APPLIES TO AREA ABOVE DATUM PLANE X ONLY.

USE SYMBOLS:

REVIEWER SYMBOLS:

\*Section/area information is current as of the date of this document. For future coordination of changes to this document, their identification should be based on the information in the current DD115.

This military standard is approved for use by all Departments in Agencies of the Department of Defense. Selection for all new engineering and design publications and for replacement use shall be made from this document.

P.A. NAVY - 45 Other Code  ARMY - 41 AIR FORCE - 70	TITLE  CASSETTES AND REELS, PROJECTION, MOTION-PICTURE, SUPER 8mm	MILITARY STANDARD
		MS14115
PROCUREMENT SPECIFICATION	SUPersedes:	SHEET 9 OF 27

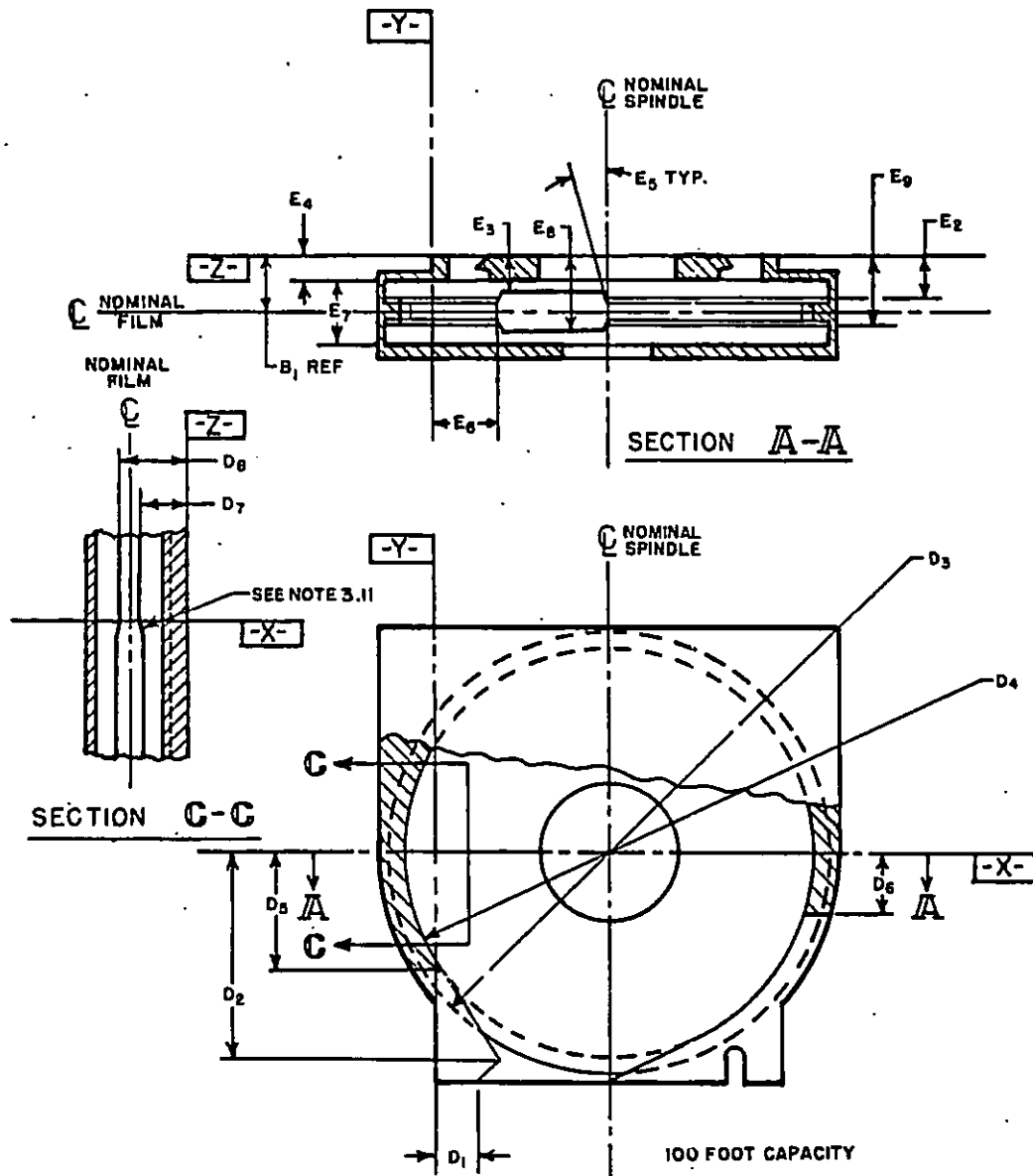
FED. SUP CLASS  
6760

USER SYMBOLS:

REVIEWER SYMBOLS:

"Review/user information is current as of the date of this document. For future coordination of changes to this document, draft circulation should be based on the information in the current DD155."

This military standard is approved for use by all Departments & Agencies of the Department of Defense. Selection for all new engineering and design applications and for repetitive use shall be made from this document.



NOTE: SEE TABLE II FOR SPECIFIC MAXIMUM AND MINIMUM DIMENSIONS.

Fig. 2  
Cassette Model B INTERNAL DIMENSIONS

P.A. NAVY - AS Other Cust ARMY EL AIR FORCE TO	TITLE  CASSETTES and REELS, PROJECTION, MOTION-PICTURE, SUPER 8mm	MILITARY STANDARD  MS 14115
PROCUREMENT SPECIFICATION NONE	SUPERSEDES:	SHEET 10 OF 27

DD FORM 672-1 (Coordinated)

PREVIOUS EDITIONS OF THIS FORM ARE OBSOLETE.

PLATE 1, 1973

APPROVED 1 APR 1974 REVISED

USED SYMBOLS:

REVIEWER SYMBOLS:

\* Deviation information is carried as of the date of this document.  
For future coordination of changes to this document, direct circulation  
should be based on the information in the current DD135.

This military standard is approved for use by all Departments  
in the Department of Defense. Deviations for all new  
engineering and design applications are for reference and shall  
be made from this document.

TABLE III				FED. SUP CLASS 6760	
	INCHES		MILLIMETERS		
F <sub>1</sub>	0.366 MIN	0.386 MAX	9.30 MIN	9.80 MAX	
F <sub>2</sub>	1.215 MAX		30.65 MAX		
F <sub>3</sub>	1.594 MIN	1.636 MAX	40.50 MIN	41.55 MAX	
F <sub>4</sub>	1.535 MIN RADIUS		39.00 MIN RADIUS		
F <sub>5</sub>	1.360 MIN	1.380 MAX RADIUS	34.55 MIN	35.05 MAX RADIUS	
F <sub>6</sub>	0.549 MAX		13.95 MAX		
F <sub>7</sub>	1.120 MAX		28.45 MAX		
F <sub>8</sub>	3.407 MIN	3.427 MAX	86.55 MIN	87.05 MAX	
F <sub>9</sub>	0.400 MAX		10.15 MAX		
F <sub>10</sub>	45° ± 2°		45° ± 2°		
F <sub>11</sub>	1.615 MAX		41.00 MAX		
F <sub>12</sub>	0.018 MAX		0.45 MAX*		
F <sub>13</sub>	1.703 MIN	1.736 MAX	43.25 MIN	44.10 MAX	
F <sub>14</sub>	0.594 MIN	0.622 MAX	15.10 MIN	15.80 MAX	
F <sub>15</sub>	0.396 MIN	0.410 MAX	10.05 MIN*	10.40 MAX*	
G <sub>1</sub>	0.937 MIN	0.957 MAX	23.80 MIN*	24.30 MAX*	
G <sub>2</sub>	1.807 MIN	1.827 MAX	45.90 MIN	46.40 MAX	
G <sub>3</sub>	VALUE OMITTED.				
G <sub>4</sub>	0.224 MAX		5.70 MAX		
G <sub>5</sub>	0.374 MIN	0.390 MAX	9.50 MIN	9.90 MAX	
G <sub>6</sub>	0.309 MIN	0.325 MAX	7.85 MIN	8.25 MAX	
G <sub>7</sub>	15° ± 2°		15° ± 2°		
G <sub>8</sub>	0.571 MIN		14.50 MIN		
G <sub>9</sub>	0.620 MIN	0.642 MAX	15.75 MIN	16.30 MAX	
G <sub>10</sub>	0.683 MIN	0.707 MAX	17.35 MIN	17.95 MAX	
* TO FACILITATE COMPATIBLE ISO DOCUMENTS, CONVERSION VALUE ESTABLISHED AS IF MILLIMETERS WERE PRIMARY.					
*** APPLIES TO AREA ABOVE DATUM PLANE X ONLY.					
A. NAVY - AS has Cast		TITLE		MILITARY STANDARD	
ARMY - EL AIR FORCE - 70		CASSETTES AND REELS, PROJECTION, MOTION-PICTURE, SUPER 8mm		MS14115	
PROCUREMENT SPECIFICATION		SUPERSEDES:		SHEET 11 OF 27	

APPROVED 1 APR 1974 REVISED

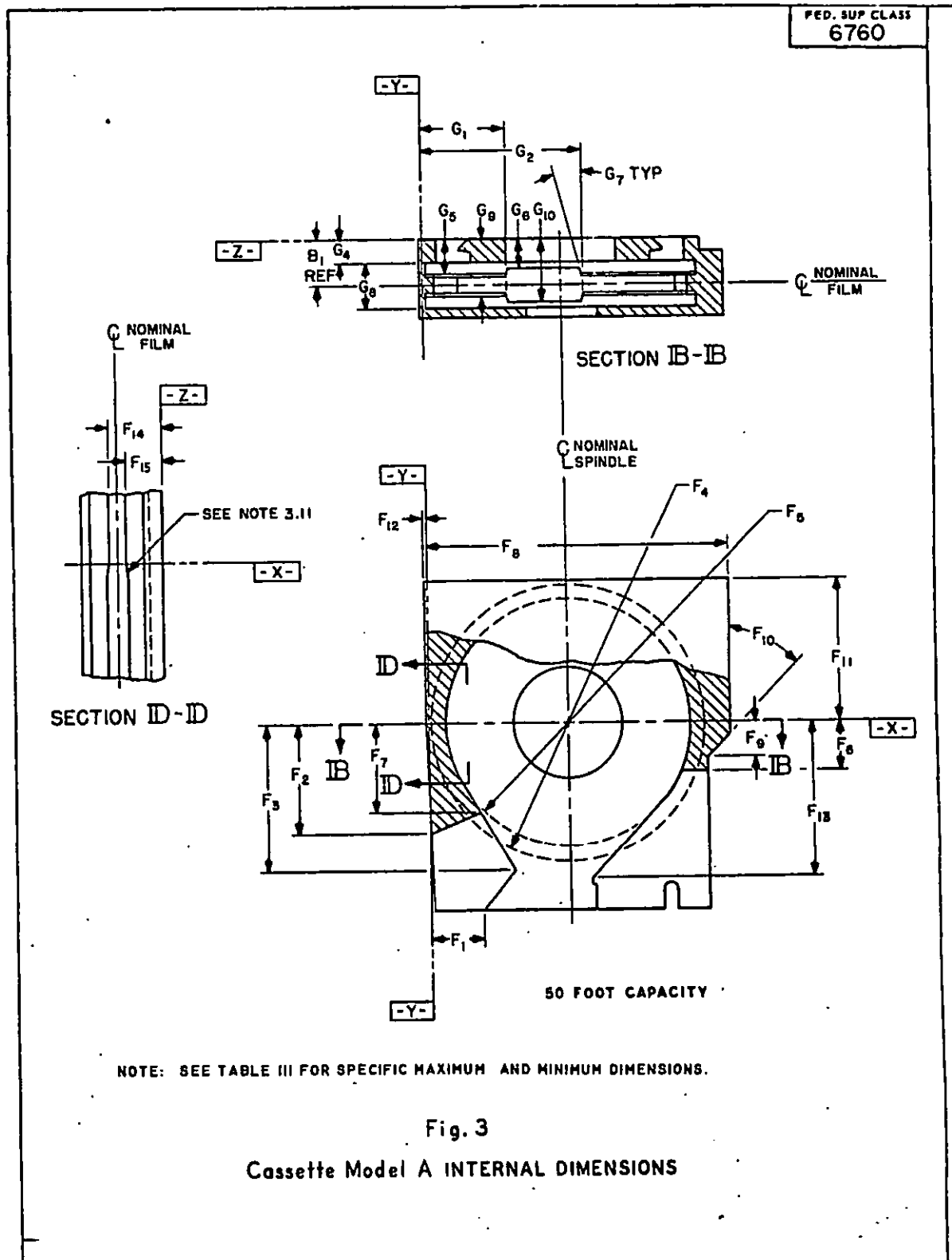
APPROVED 1 APR 1974 REVISED

USER SYMBOLS:

REVIEWER SYMBOLS:

"Reflow/revise information is current as of the date of this document.  
For future coordination of changes to this document, draft circulation  
should be based on the information in the current DODISS."

This military standard is approved for use by all Departments  
& Agencies of the Department of Defense. Selection for all new  
engineering and design applications and for repetitive use shall  
be made from this document.



P.A. NAVY-AS Other Cust ARMY EL AIR FORCE 70	TITLE  CASSETTES and REELS, PROJECTION, MOTION-PICTURE, SUPER 8mm	MILITARY STANDARD
PROCUREMENT SPECIFICATION NONE	SUPERSEDES:	MS 14115 SHEET 12 OF 27

FED. SUP CLASS  
6760

TABLE IV

INCHES			MILLIMETERS	
H <sub>1</sub>	2.100 MAX		53.35 MAX	
H <sub>2</sub>	0.124 MIN	0.187 MAX RADIUS	3.15 MIN	4.75 MAX RADIUS
H <sub>3</sub>	0.010 MAX RADIUS		0.25 MAX RADIUS	
H <sub>4</sub>	2.095 MAX RADIUS		53.20 MAX RADIUS	
H <sub>5</sub>	0.394 MIN RADIUS		10.00 MIN RADIUS	
H <sub>6</sub>	0.640 MIN RADIUS		16.25 MIN RADIUS	
H <sub>7</sub>	0.809 MAX RADIUS		20.55 MAX RADIUS	
J <sub>1</sub>	0.910 MIN REF	0.941 MAX REF	23.10 MIN REF	23.90 MAX REF
J <sub>2</sub>	0.124 MIN	0.171 MAX	3.15 MIN	4.35 MAX

TABLE V

INCHES			MILLIMETERS	
K <sub>1</sub>	1.972 MIN	1.988 MAX	50.10 MIN	50.50 MAX
K <sub>2</sub>	1.872 MIN	1.888 MAX	47.55 MIN	47.95 MAX
K <sub>3</sub>	2.167 MIN	2.181 MAX	55.05 MIN	55.40 MAX
K <sub>4</sub>	2.316 MIN	2.331 MAX	58.85 MIN	59.20 MAX
K <sub>5</sub>	2.463 MIN	2.480 MAX	62.55 MIN*	63.00 MAX*
K <sub>6</sub>	2.957 MIN	2.970 MAX	75.10 MIN	75.45 MAX

\* TO FACILITATE COMPATIBLE ISO DOCUMENTS, CONVERSION VALUE ESTABLISHED AS IF MILLIMETERS WERE PRIMARY.

USER SYMBOL:

REVIEWER SYMBOL:

"Baseline" information is current as of the date of this document. For future identification of changes in this document, draft amendment should be based on the information in the current DDISS.

This military standard is approved for use by all Departments & Agencies of the Department of Defense. Deviation for all new engineering and design applications and for repetitive use shall be made from this document.

P.A.  
NAVY - AS  
Other CodeARMY - 71  
AIR FORCE - 70

TITLE

CASSETTES AND REELS, PROJECTION,  
MOTION-PICTURE, SUPER 8mm

MILITARY STANDARD

MS14115

PROCUREMENT SPECIFICATION

SUPERSEDES:

SHEET 13 OF 27

DD FORM 672-1 (Coordinated)

PREVIOUS EDITIONS OF THIS FORM ARE OBSOLETE.

PLATE NO. 2285

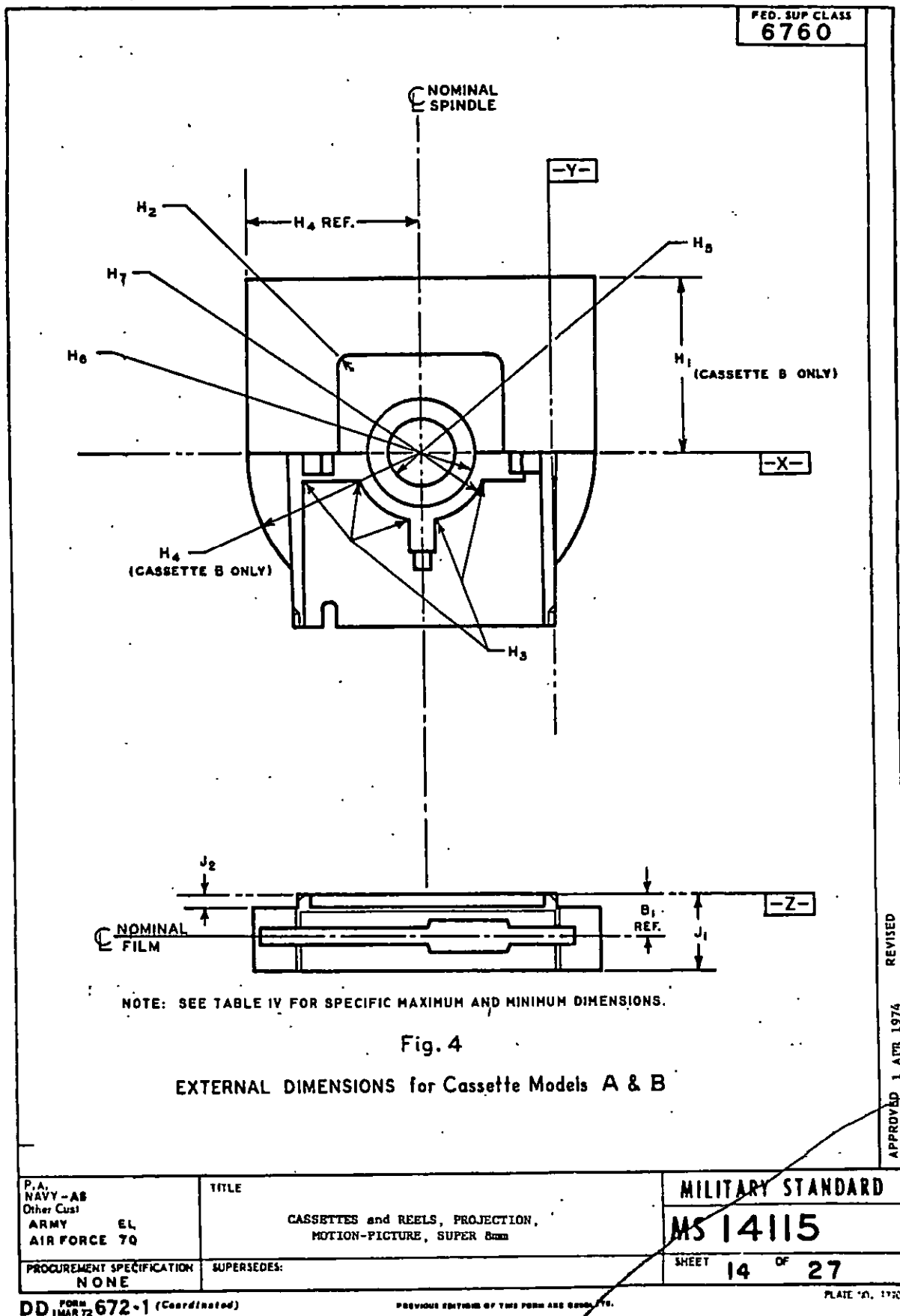
APPROVED 1 APR 1974 REVISED

USER SYMBOLS:

REVIEWER SYMBOLS:

"Review/user information is current as of the date of this document. For future coordination of changes to this document, draft circulation should be based on the information in the current DDSSS."

This military standard is approved for use by all Departments & Agencies of the Department of Defense. Solicitation for all new engineering and design applications and for repetitive use shall be made from this document.

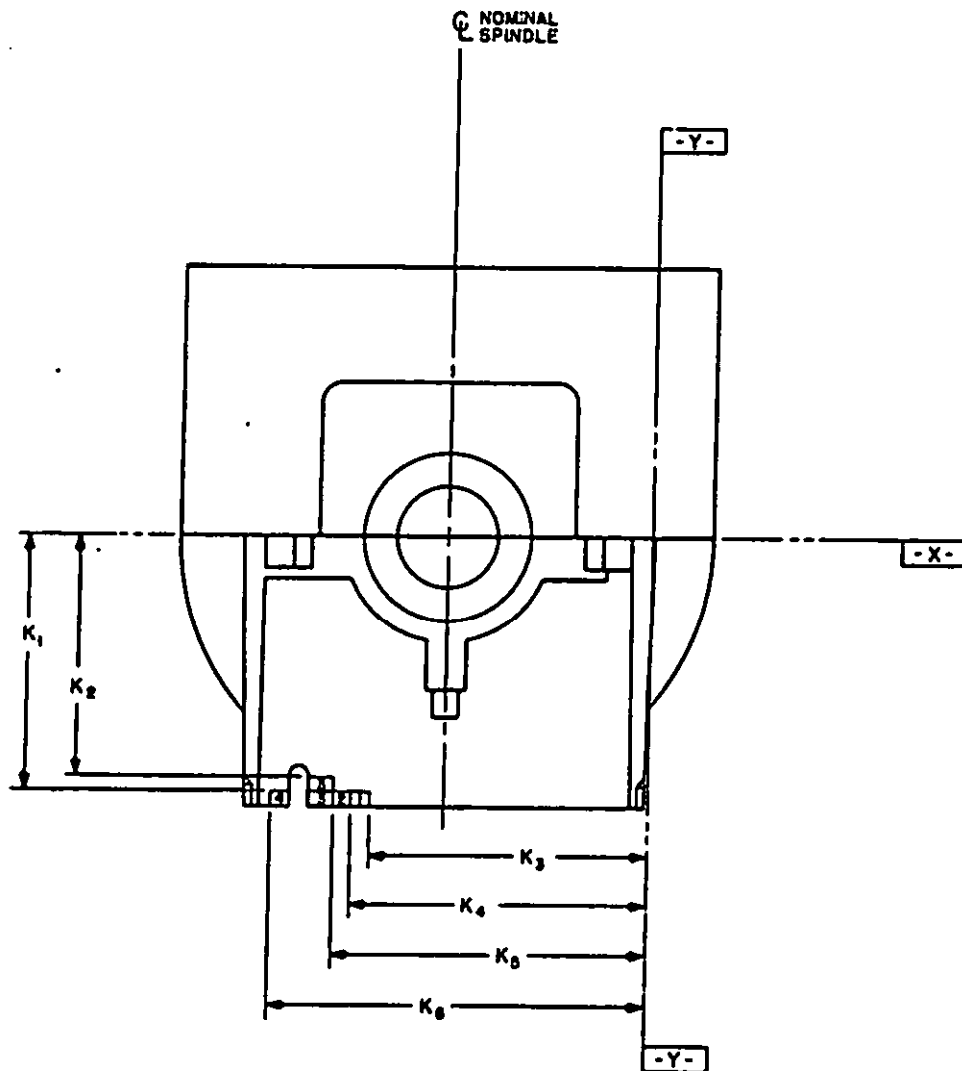


FED. SUP CLASS  
6760

USER SYMBOLS:

REVIEWER SYMBOLS:

"Notice/User information is current as of the date of this document.  
For future coordination of changes to this document, draft circulation  
should be based on the information in the current 000133."



NOTE: SEE TABLE V FOR SPECIFIC MAXIMUM AND MINIMUM DIMENSIONS.

Fig. 5

## IDENTIFICATION NOTCHES for Cassette Models A &amp; B

APPROVED 1 APR 1974 REVISED

P.A. NAVY - AS Other Cast ARMY EL AIR FORCE 70	TITLE  CASSETTES and REELS, PROJECTION, MOTION-PICTURE, SUPER 8mm	MILITARY STANDARD	
		MS 14115	
PROCUREMENT SPECIFICATION NONE	SUPERSEDES:	SHEET 15 OF 27	

DD FORM 672-1 (Coordinated)

PREVIOUS EDITIONS OF THIS FORM ARE OBSOLETE.

PLATE NO. 17708

THIS DRAWING IS UNCLASSIFIED AND IS IN THE PUBLIC DOMAIN.  
It is the property of the Department of Defense. Selection for all new  
engineering and design applications and for reproduction are to be  
made from this document.

FED. SUP CLASS  
6760

TABLE VI

INCHES

MILLIMETERS

L <sub>1</sub>	0.291 MIN	0.311 MAX	7.40 MIN	7.90 MAX
L <sub>2</sub>	1.303 MIN	1.315 MAX	33.10 MIN	33.40 MAX
L <sub>3</sub>	1.512 MIN	1.528 MAX	38.40 MIN	38.80 MAX
L <sub>4</sub>	0.248 MIN	0.252 MAX	6.30 MIN	6.40 MAX
L <sub>5</sub>	0.128 MIN	0.132 MAX	3.25 MIN	3.35 MAX
L <sub>6</sub>	0.362 MIN	0.401 MAX	9.20 MIN	10.20 MAX
L <sub>7</sub>	0.291 MIN	0.311 MAX	7.40 MIN	7.90 MAX
L <sub>8</sub>	1.143 MIN	1.163 MAX	29.05 MIN	29.55 MAX
L <sub>9</sub>	0.150 MIN	0.161 MAX	3.80 MIN	4.10 MAX
L <sub>10</sub>	1.169 MIN	1.173 MAX	29.70 MIN	29.80 MAX
L <sub>11</sub>	3.378 MIN	3.398 MAX	85.80 MIN	86.30 MAX
L <sub>12</sub>	2.992 MIN	3.000 MAX	76.00 MIN	76.20 MAX
L <sub>13</sub>	0.150 MIN	0.161 MAX	3.80 MIN	4.10 MAX
L <sub>14</sub>	0.291 MIN	0.311 MAX	7.40 MIN	7.90 MAX
L <sub>15</sub>	2.461 MIN	2.480 MAX	62.50 MIN	63.00 MAX
L <sub>16</sub>	0.004 MIN	0.012 MAX	0.10 MIN	0.30 MAX
L <sub>17</sub>	0.002 MIN	0.008 MAX	0.05 MIN	0.20 MAX
L <sub>18</sub>	0.146 MIN	0.155 MAX	3.70 MIN	3.95 MAX
L <sub>19</sub>	45° ± 1°		45° ± 1°	
L <sub>20</sub>	10° ± 1°		10° ± 1°	
L <sub>21</sub>	0.965 MIN	0.984 MAX	24.50 MIN	25.00 MAX
L <sub>22</sub>	0.065 MIN	0.075 MAX	1.65 MIN	1.90 MAX
L <sub>23</sub>	3.199 MIN	3.217 MAX	81.25 MIN	81.70 MAX

USER SYMBOLS:

REVIEWER SYMBOLS:

"Review/ear information is current as of the date of this document.  
Per future coordination of changes to this document, draft circulation  
should be based on the information in the current DODISS."

This military standard is approved for use by all Departments  
in Agencies of the Department of Defense. Solicitation for all new  
engineering and design applications and for repetitive use shall  
be made from this document.

P.A.  
NAVY - AS  
Other CustARMY - EL  
AIR FORCE - 70

TITLE

CASSETTES AND REELS, PROJECTION,  
MOTION-PICTURE, SUPER 8mm

MILITARY STANDARD

MS14115

PROCUREMENT SPECIFICATION

SUPERSEDES:

SHEET

16

OF

27

APPROVED 1 APR 1974 REVISED

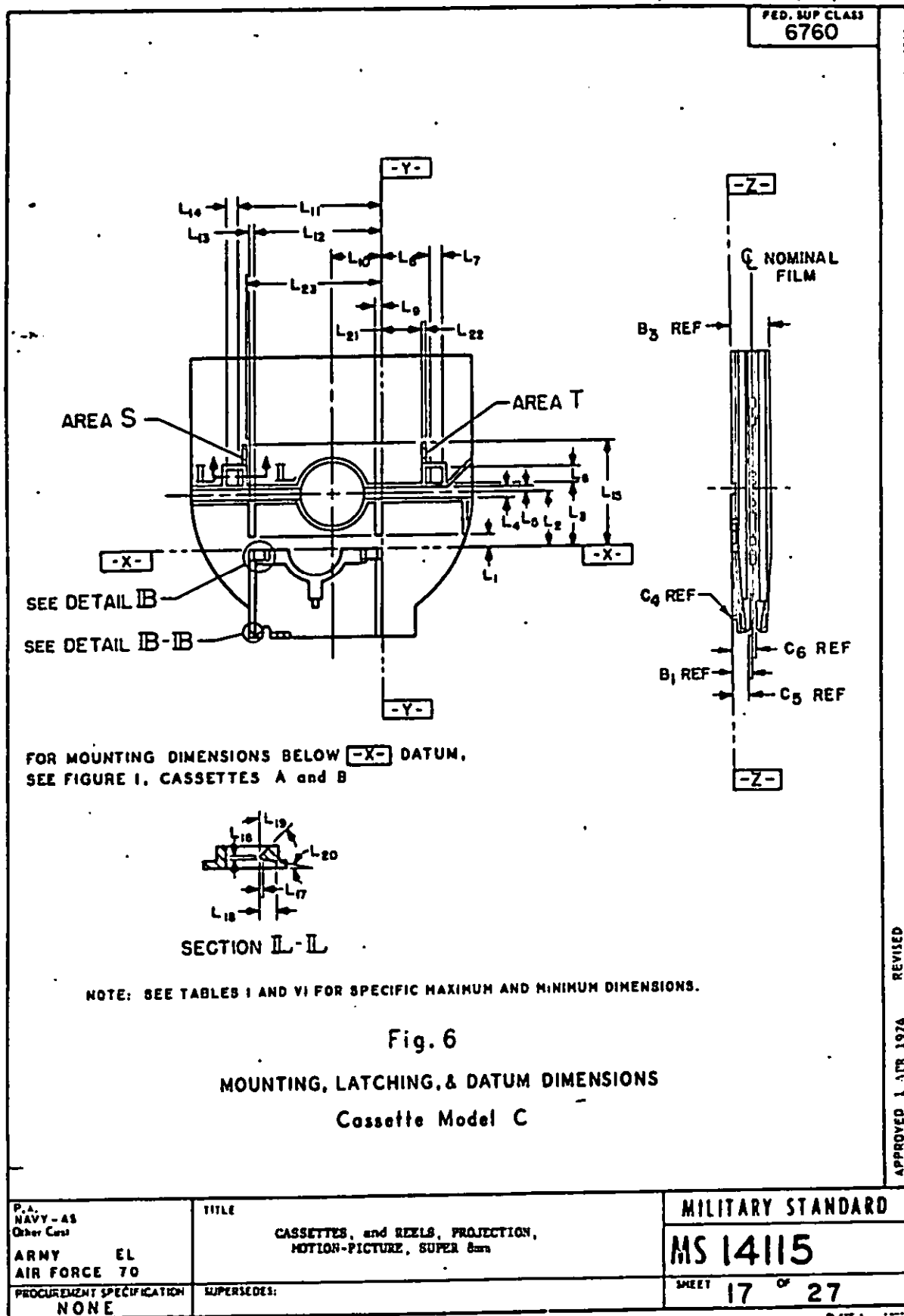


USER SYMBOLS:

REVIEWER SYMBOLS:

\*Revision/Issue information is current as of the date of this document.  
For future coordination of changes in this document, draft abbreviations  
should be based on the information in the current DDG155.

This military standard is approved for use by all Departments  
in Agencies of the Department of Defense. Selection for all new  
engineering and design applications and for replacement use shall  
be made from this document.



USER SYMBOLS:

REVIEWER SYMBOLS:

"Section/user information is current as of the date of this document.  
For future coordination of changes to this document, draft circulation  
should be based on the information in the current DD0153."

This military standard is approved for use by all Departments  
& Agencies of the Department of Defense. Selection for all new  
engineering and design applications and for replacement use shall  
be made from this document.

FED. SUP CLASS  
6760

TABLE VII

	INCHES		MILLIMETERS	
N <sub>1</sub>	1.563 MIN	1.577 MAX	39.70 MIN*	40.05 MAX*
N <sub>2</sub>	0.000 MIN	0.015 MAX	0.00 MIN	0.40 MAX
N <sub>3</sub>	0.211 MAX		5.35 MAX	
N <sub>4</sub>	0.606 MIN		15.40 MIN	
N <sub>5</sub>	0.620 MIN	0.642 MAX	15.75 MIN	16.30 MAX
N <sub>6</sub>	0.374 MIN	0.390 MAX	9.50 MIN	9.90 MAX
P <sub>1</sub>	1.016 MIN	1.096 MAX	25.80 MIN	27.85 MAX
P <sub>2</sub>	2.890 MIN RADIUS		73.40 MIN RADIUS	
P <sub>3</sub>	3.220 MIN RADIUS		81.80 MIN RADIUS	
P <sub>4</sub>	0.321 MIN	0.341 MAX	8.15 MIN	8.65 MAX

TABLE VIII

	INCHES		MILLIMETERS	
Q <sub>1</sub>	0.394 MIN RADIUS		10.00 MIN RADIUS	
Q <sub>2</sub>	0.780 MIN	0.811 MAX	19.80 MIN	20.60 MAX
Q <sub>3</sub>	3.299 MIN	3.331 MAX RADIUS	83.80 MIN	84.60 MAX RADIUS
Q <sub>4</sub>	4.646 MAX		118.00 MAX	
Q <sub>5</sub>	0.740 MIN RADIUS		18.80 MIN RADIUS	
Q <sub>6</sub>	2.120 MIN	2.165 MAX	53.85 MIN	55.00 MAX
Q <sub>7</sub>	4.437 MIN	4.539 MAX	112.70 MIN	115.30 MAX

\* TO FACILITATE COMPATIBLE ISO DOCUMENTS, CONVERSION VALUE ESTABLISHED AS IF MILLIMETERS WERE PRIMARY.

APPROVED 1 APR 1974 REVISED

P.A.  
NAVY - AS  
Other CustARMY - EL  
AIR FORCE - 70

TITLE

CASSETTES AND REELS, PROJECTION,  
MOTION-PICTURE, SUPER 8mm.

MILITARY STANDARD

MS14115

PROCUREMENT SPECIFICATION

SUPERSEDES:

SHEET

18

OF

27

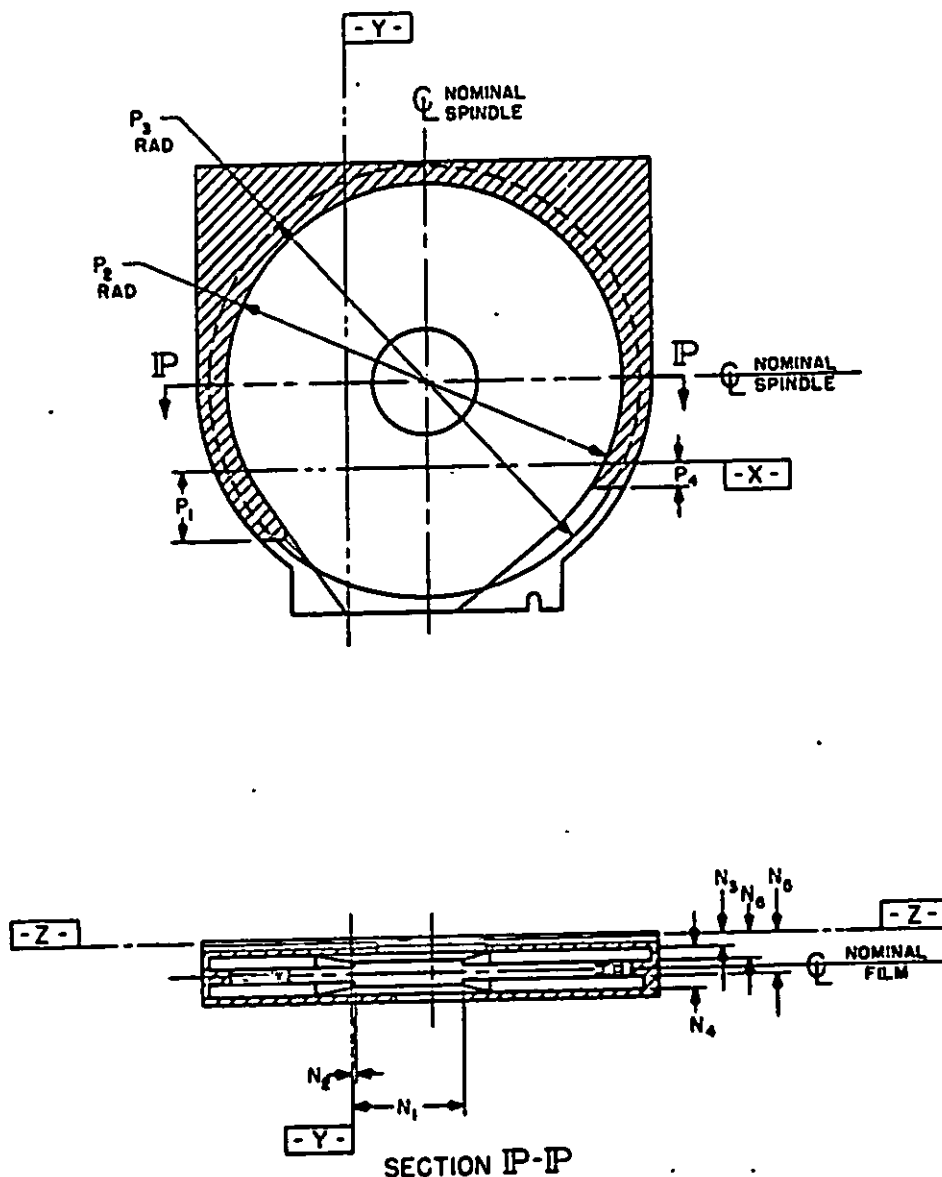
FED. SUP CLASS  
6760

USER SYMBOLS

MILITARY SYMBOLS

"Manufacture information is current as of the date of this document. For future consideration of changes to this document, draft circulation should be based on the information in the current DDG155."

This military standard is approved for use by all Departments & Agencies of the Department of Defense. Deviation for all use engineering and design applications and for repetitive use shall be made from this document.



NOTE: SEE TABLE VII FOR SPECIFIC MAXIMUM AND MINIMUM DIMENSIONS.

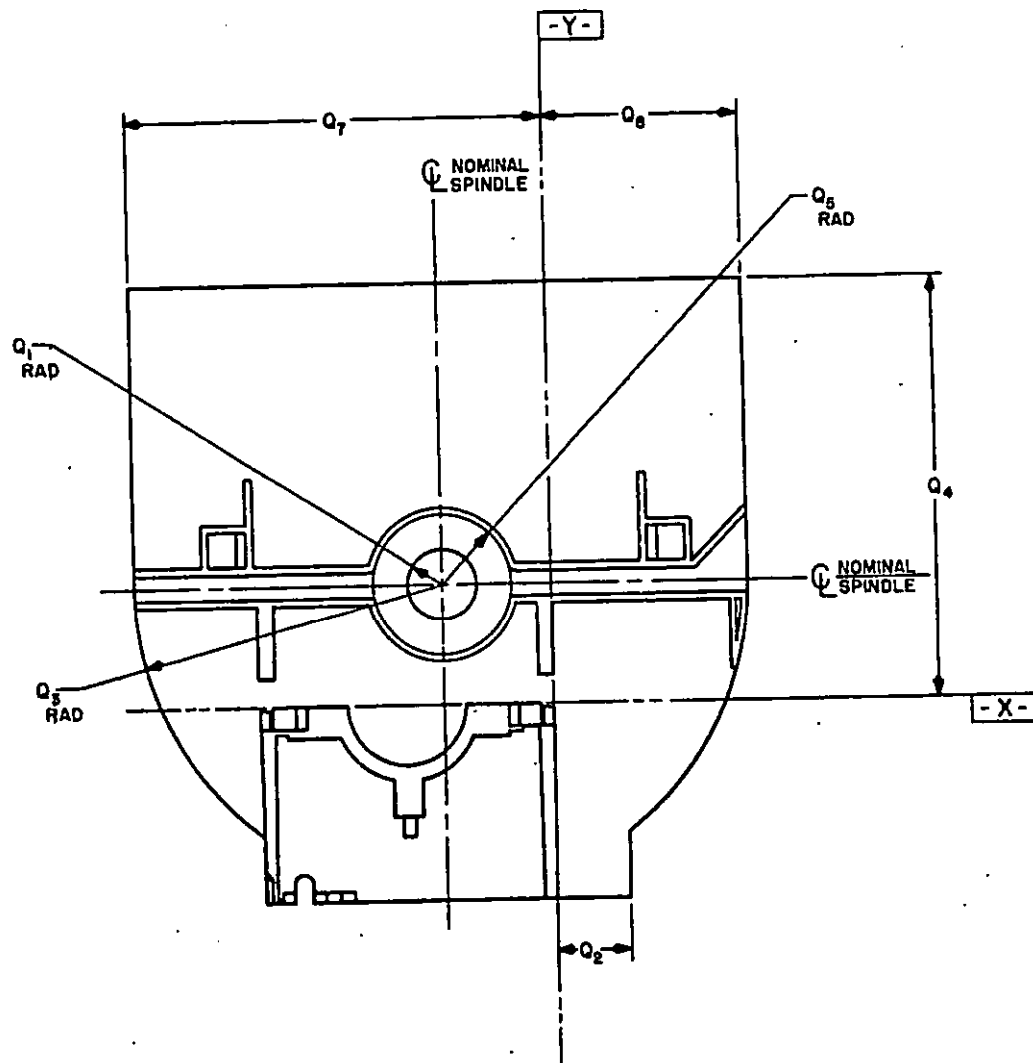
Fig. 7

Cassette Model C INTERNAL DIMENSIONS

APPROVED 1 APR 1974 REVISED

P.A. NAVY - AS Other Cost  ARMY EL AIR FORCE 70	TITLE  CASSETTES and REELS, PROJECTION, - MOTION-PICTURE, SUPER 8mm	MILITARY STANDARD  MS 14115
PROCUREMENT SPECIFICATION NONE	SUPERSEDES:	SHEET 19 OF 27

This military standard is approved for use by all Departments and Agencies of the Department of Defense. Solicitors for this new type of contract should be referred to the Department of Defense, Washington, D.C. 20315, for further information and for repetitive use shall be made from this document.



**NOTE: SEE TABLE VIII FOR SPECIFIC MAXIMUM AND MINIMUM DIMENSIONS.**

**Fig. 8**

### Cassette Model C EXTERNAL DIMENSIONS

P.A. NAVY - AS Other Cust ARMY EL AIR FORCE 70	TITLE CASSETTES and REELS, PROJECTION, MOTION-PICTURE, SUPER 8mm	MILITARY STANDARD MS 14115
PROCUREMENT SPECIFICATION NONE	SUPERSEDES:	SHEET 20 OF 27 DATE 30-1-73

FED. SUP CLASS  
6760

TABLE IX

## INCHES

## MILLIMETERS

R <sub>1</sub>	0.291 MIN	0.311 MAX	7.40 MIN	7.90 MAX
R <sub>2</sub>	1.968 MIN	1.972 MAX	50.00 MIN	50.10 MAX
R <sub>3</sub>	1.512 MIN	1.528 MAX	38.40 MIN	38.80 MAX
R <sub>4</sub>	0.248 MIN	0.252 MAX	6.30 MIN	6.40 MAX
R <sub>5</sub>	0.528 MIN	0.533 MAX	13.40 MIN	13.53 MAX
R <sub>6</sub>	0.362 MIN	0.401 MAX	9.20 MIN	10.20 MAX
R <sub>7</sub>	0.291 MIN	0.311 MAX	7.40 MIN	7.90 MAX
R <sub>8</sub>	1.143 MIN	1.163 MAX	29.03 MIN	29.53 MAX
R <sub>9</sub>	0.150 MIN	0.161 MAX	3.80 MIN	4.10 MAX
R <sub>10</sub>	0.653 MIN	0.659 MAX	16.63 MIN	16.75 MAX
R <sub>11</sub>	3.378 MIN	3.398 MAX	85.80 MIN	86.30 MAX
R <sub>12</sub>	2.992 MIN	3.000 MAX	76.00 MIN	76.20 MAX
R <sub>13</sub>	0.150 MIN	0.161 MAX	3.80 MIN	4.10 MAX
R <sub>14</sub>	0.291 MIN	0.311 MAX	7.40 MIN	7.90 MAX
R <sub>15</sub>	2.461 MIN	2.480 MAX	62.50 MIN	63.00 MAX
R <sub>16</sub>	0.004 MIN	0.012 MAX	0.10 MIN	0.30 MAX
R <sub>17</sub>	0.002 MIN	0.008 MAX	0.03 MIN	0.20 MAX
R <sub>18</sub>	0.146 MIN	0.153 MAX	3.70 MIN	3.93 MAX
R <sub>19</sub>	44° MIN	46° MAX	44° MIN	46° MAX
R <sub>20</sub>	9° MIN	11° MAX	9° MIN	11° MAX
R <sub>21</sub>	0.963 MIN	0.984 MAX	24.50 MIN	25.00 MAX
R <sub>22</sub>	0.065 MIN	0.075 MAX	1.65 MIN	1.90 MAX
R <sub>23</sub>	3.199 MIN	3.217 MAX	81.25 MIN	81.70 MAX

USED SYMBOLS:

REVIEWER SYMBOLS:

"Positive/zero information is current as of the date of this document. For future coordination of changes in this document, draft identification should be based on the information in the current DDHSB."

This military standard is approved for use by all Departments & Agencies of the Department of Defense. Solicitation for all new engineering and design applications and for repetitive use shall be made from this document.

P.A.  
NAVY - AS  
Other CostARMY - EL  
AIR FORCE - 70

PROCUREMENT SPECIFICATION

TITLE

CASSETTES AND REELS, PROJECTION,  
MOTION-PICTURE, SUPER 8mm

SUPERSEDES:

MILITARY STANDARD

MS14115

SHEET 21 OF 27

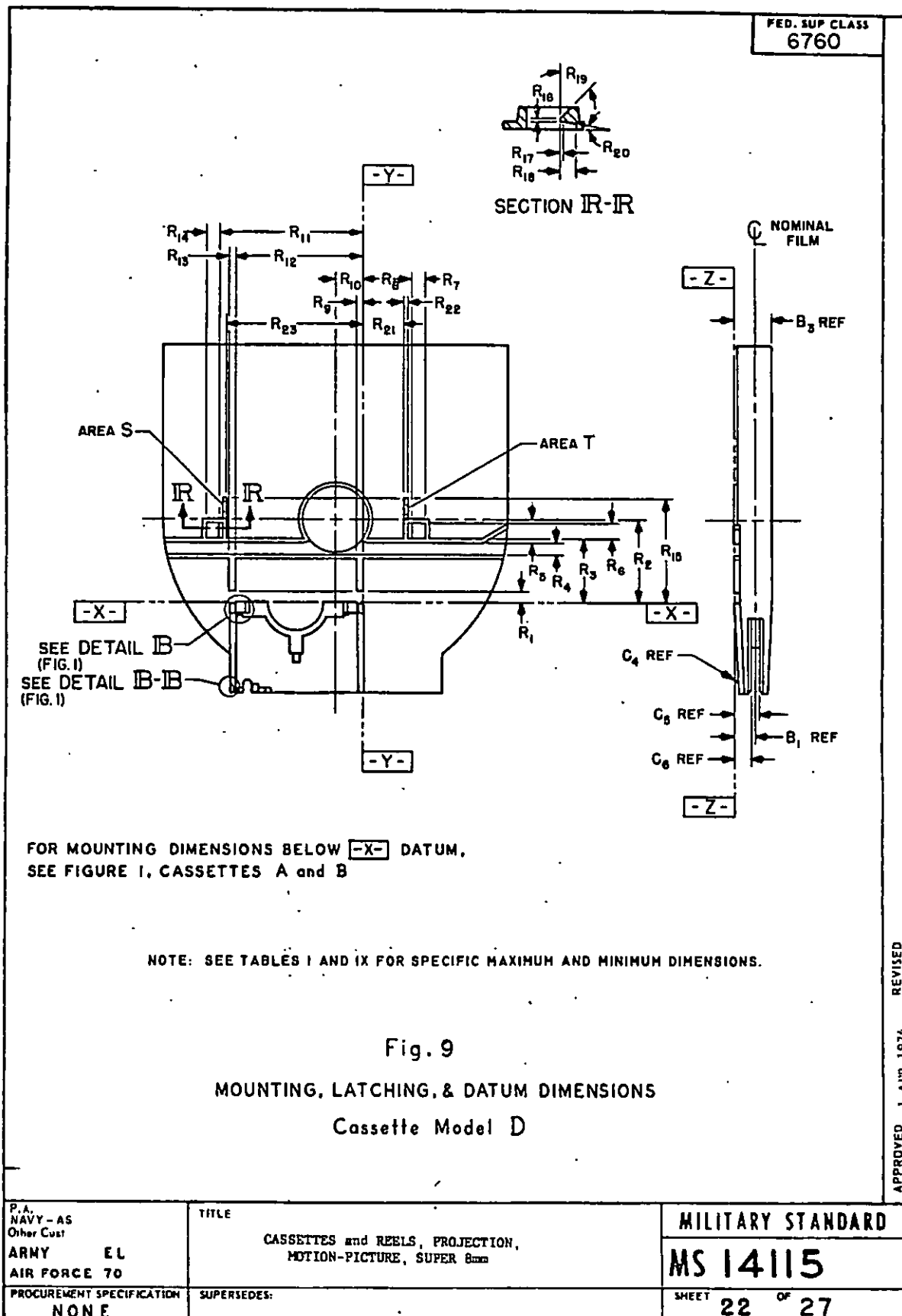
APPROVED 1 APR 1974 REVISED

USER SYMBOLS:

REVIEWER SYMBOLS:

"Review/user information is current as of the date of this document. For future coordination of changes to this document, direct circulation should be based on the information in the current DD155."

This military standard is approved for use by all Departments & Agencies of the Department of Defense. Selections for all new engineering and design applications and for replacement use shall be made from this document.



USER SYMBOL:

REVIEWER SYMBOL:

"Notice/Note: Information is current as of the date of this document. For future coordination of changes to this document, draft consideration should be based on the information in the current 609133."

This military standard is approved for use by all Departments & Agencies of the Department of Defense. It is not to be used for engineering and design applications and for repetitive use shall be made from this document.

FED. SUP CLASS  
6760

TABLE X

	INCHES		MILLIMETERS	
T <sub>1</sub>	1.542 MIN	1.563 MAX	39.15 MIN	39.70 MAX
T <sub>2</sub>	0.209 MIN	0.228 MAX	5.30 MIN	5.80 MAX
T <sub>3</sub>	0.211 MAX		5.35 MIN	
T <sub>4</sub>	0.606 MIN		15.40 MIN	
T <sub>5</sub>	0.620 MIN	0.642 MAX	15.75 MIN	16.30 MAX
T <sub>6</sub>	0.374 MIN	0.390 MAX	9.50 MIN	9.90 MAX
U <sub>1</sub>	1.016 MIN	1.096 MAX	25.80 MIN	27.85 MAX
U <sub>2</sub>	3.626 MIN RADIUS		92.10 MIN RADIUS	
U <sub>3</sub>	3.957 MIN RADIUS		100.50 MIN RADIUS	
U <sub>4</sub>	0.321 MIN	0.341 MAX	8.15 MIN	8.65 MAX

TABLE XI

	INCHES		MILLIMETERS	
V <sub>1</sub>	0.394 MIN RADIUS		10.00 MIN RADIUS	
V <sub>2</sub>	1.815 MIN	1.835 MAX	46.10 MIN	46.60 MAX
V <sub>3</sub>	4.035 MIN	4.065 MAX	102.50 MIN	103.25 MAX
V <sub>4</sub>	6.037 MAX		153.35 MAX*	
V <sub>5</sub>	0.740 MIN RADIUS		18.80 MIN RADIUS	
V <sub>6</sub>	3.410 MAX		86.60 MAX	
V <sub>7</sub>	4.720 MAX		119.90 MAX	

TABLE XII

REEL SIZE NUMBER	NOMINAL CAPACITY OF REEL	DIMENSION	INCHES		MILLIMETERS	
			MAX	MIN	MAX	MIN
15	220-FOOT (MODEL C)	H	6.130	6.130	156.20	155.70
		V	6.181		157.00	
		FILM DIA**	5.60	3.70	142.2	94.0
19	400-FOOT (MODEL D)	H	7.625	7.594	193.65	192.90
		V	7.653		194.40	
		FILM DIA**	7.07	4.90	179.6	124.5

\* TO FACILITATE COMPATIBLE ISO DOCUMENTS, CONVERSION VALUE ESTABLISHED AS IF MILLIMETERS WERE PRIMARY.

\*\* SEE 4.10.1

P.A.  
NAVY - AS  
Other CodeARMY - EL  
AIR FORCE - 70

TITLE

CASSETTES AND REELS, PROJECTION,  
MOTION-PICTURE, SUPER 8mm

MILITARY STANDARD

MS14115

PROCUREMENT SPECIFICATION

SUPERSEDED:

SHEET

23

OF

27

APPROVED 1 APR 1974 REVISED

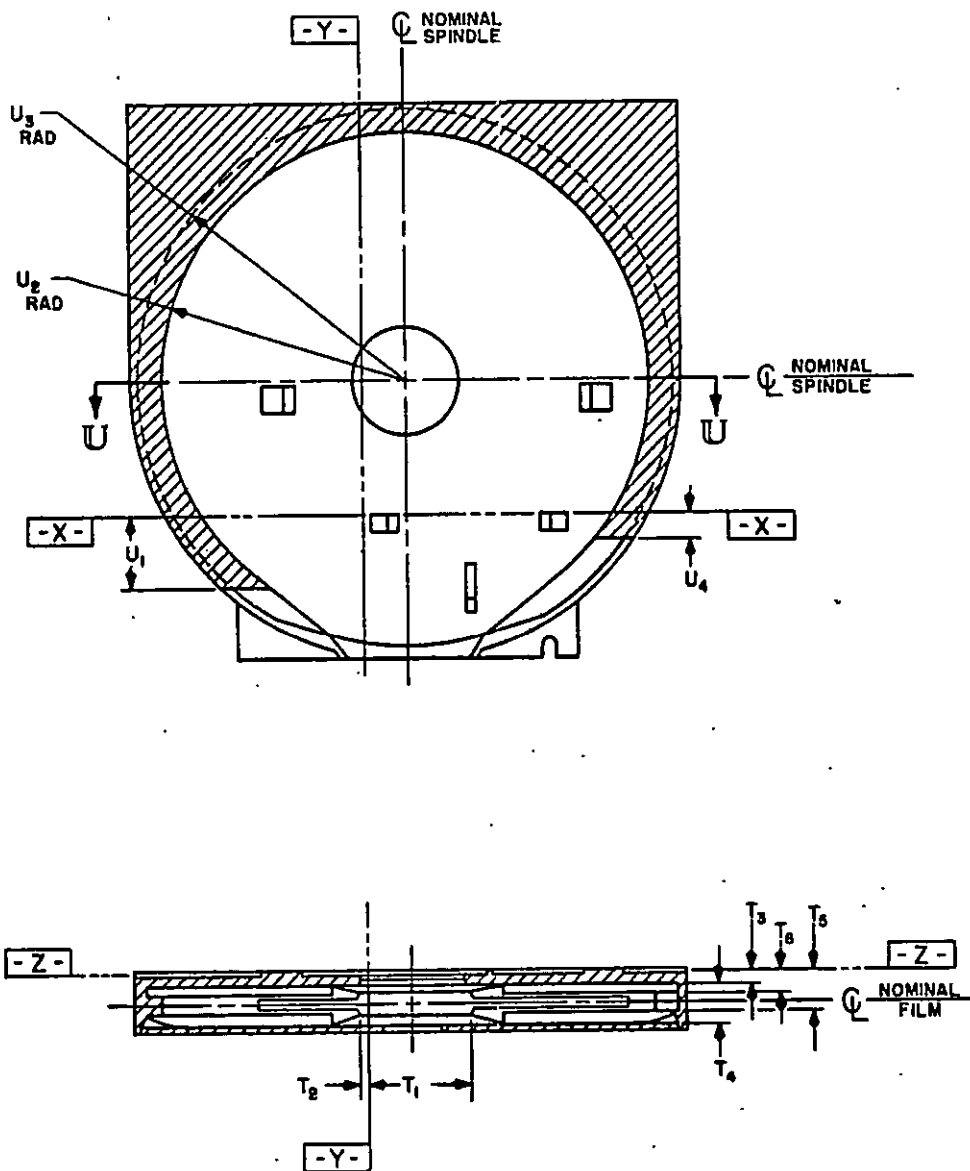
FED. SUP CLASS  
6760

USER SYMBOLS:

REVIEWER SYMBOLS:

"Review/user information is current as of the date of this document. For future coordination of changes to this document, draft circulation should be based on the information in the current DODISS."

This military standard is approved for use by all Departments & Agencies of the Department of Defense. Selection for all new engineering and design applications and for repetitive use shall be made from this document.



## SECTION U-U

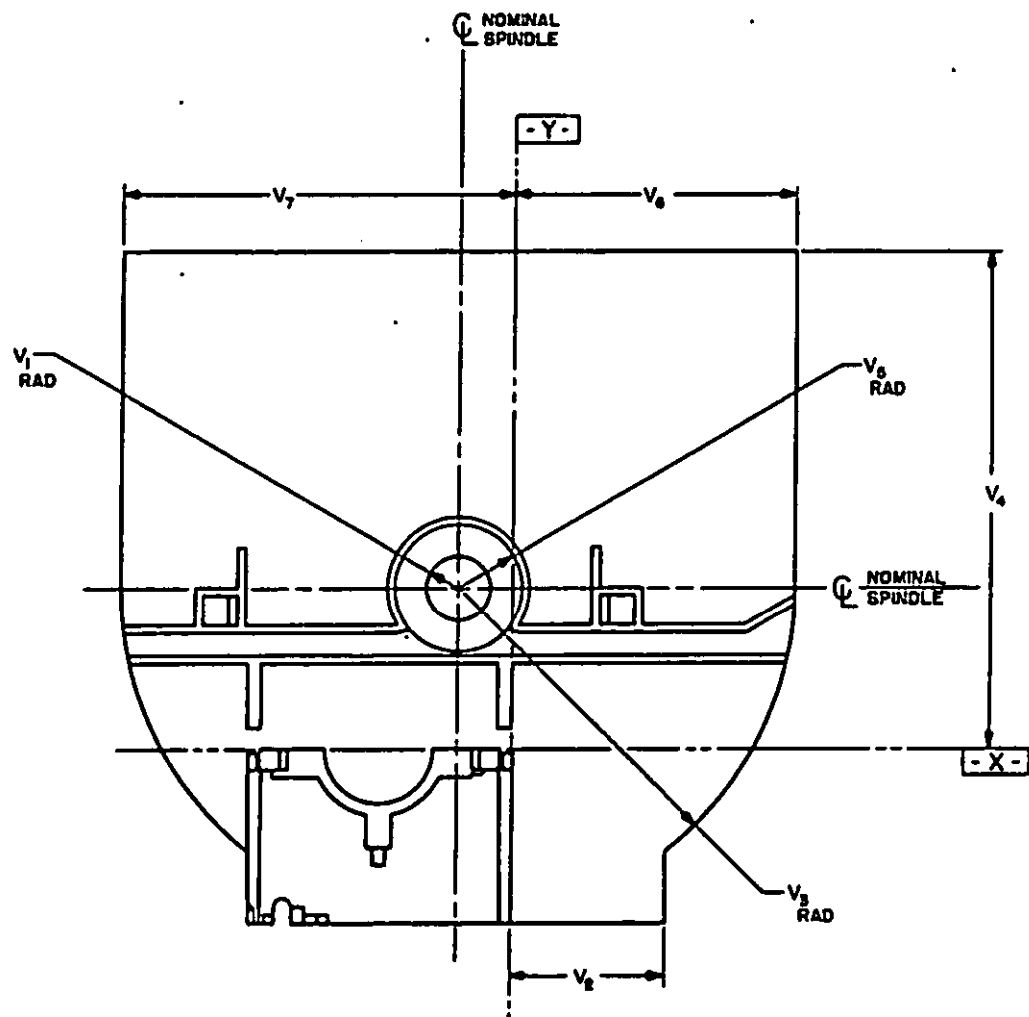
NOTE: SEE TABLE X FOR SPECIFIC MAXIMUM AND MINIMUM DIMENSIONS.

Fig. 10

## Cassette Model D INTERNAL DIMENSIONS

P.A. NAVY - AG Other Coast ARMY EL AIR FORCE 70	TITLE  CASSETTES and REELS, PROJECTION. MOTION-PICTURE, SUPER 8mm	MILITARY STANDARD  MS 14115
PROCUREMENT SPECIFICATION NONE	SUPERSEDES:	SHEET 24 OF 27



FED. SUP CLASS  
6760

NOTE: SEE TABLE XI FOR SPECIFIC MAXIMUM AND MINIMUM DIMENSIONS.

Fig. II

## Cassette Model D EXTERNAL DIMENSIONS

P.A. NAVY-AS Other Code ARMY EL AIR FORCE 70	TITLE  CASSETTES and REELS, PROJECTION, MOTION-PICTURE, SUPER 8mm	MILITARY STANDARD
PROCUREMENT SPECIFICATION NONE	SUPERSEDES:	MS 14115
		SHEET 25 OF 27

DD FORM 672-1 (Coordinated)

PREVIOUS EDITIONS OF THIS FORM ARE OBSOLETE.

F.27

APPROVED 1 APR 1974 REVISED

Information in this document is subject to change without notice. For future distribution of changes to this document, draft preparation should be based on the information in the current 000125.

6. Agencies of the Department of Defense. Selection for all new engineering and design applications and for repeating use shall be made from this document.

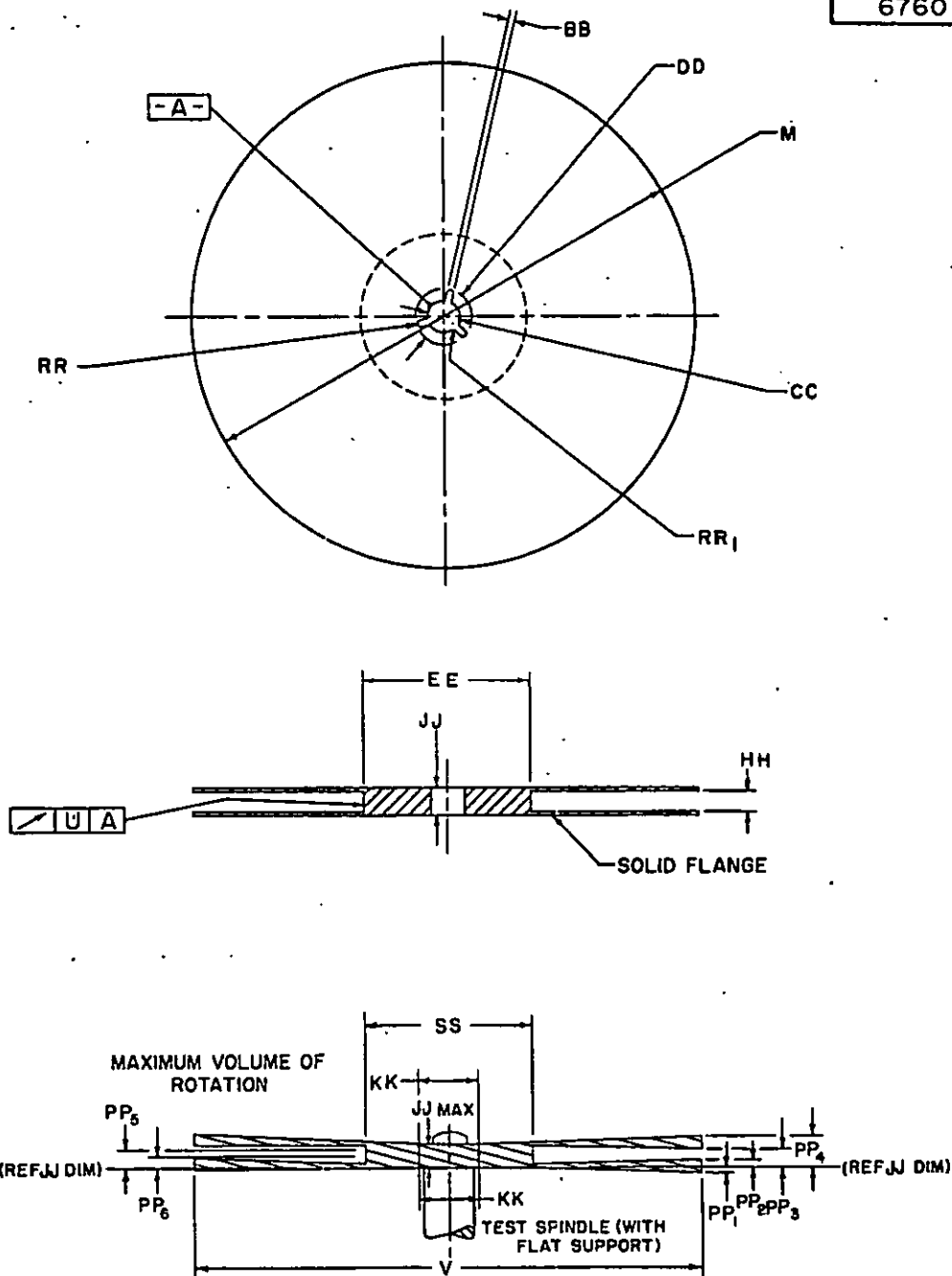
FED. SUP CLASS  
6760

USER SYMBOLS:

REVIEWER SYMBOLS:

"Review/user information is current as of the date of this document.  
For future coordination of changes to this document, draft circulation  
should be kept on the information in the current DODISS."

This military standard is approved for use by all Departments  
in Agencies of the Department of Defense. Selection for all new  
engineering and design applications and for repetitive use shall  
be made from this document.



NOTE: SEE TABLES XII AND XIII FOR SPECIFIC MINIMUM AND MAXIMUM DIMENSIONS

Fig. 12

REEL DIMENSIONS for Cassette Models C and D

P.A. NAVY - AS Other Cust ARMY EL AIR FORCE 70	TITLE  CASSETTES and REELS, PROJECTION, MOTION-PICTURE, SUPER 8mm	MILITARY STANDARD <b>MS 14115</b>
PROCUREMENT SPECIFICATION NONE	SUPERSEDES:	SHEET 26 OF 27

DD FORM 1 MAR 72 672-1 (Coordinated)

PREVIOUS EDITIONS OF THIS PAPER ARE OBSOLETE.

PLATE 1, 11

FED. SUP CLASS  
6760

TABLE XIII

DIMENSIONS	INCHES		MILLIMETERS	
	MAX	MIN	MAX	MIN
BB	0.071	0.059	1.80	1.50
CC	0.508	0.502	13.00	12.75
DD	0.822	0.802	20.90	20.40
EE	2.500	2.470	63.50	62.75
HH	0.370	0.321	9.40	8.15
JJ	0.450	0.421	11.45	10.70
KK	0.850	-	21.60	-
PP <sub>1</sub>	0.016	-	0.40	-
PP <sub>2</sub>	0.055	-	1.40	-
PP <sub>3</sub>	-	0.374	-	9.50
PP <sub>4</sub>	0.445	-	11.30	-
PP <sub>5</sub>	0.370	-	9.40	-
PP <sub>6</sub>	-	0.059	-	1.50
RR	MAXIMUM IS ONE-HALF THE VALUE OF BB		MAXIMUM IS ONE-HALF THE VALUE OF BB	
RR <sub>1</sub>	MAXIMUM IS ONE-HALF THE VALUE OF BB		MAXIMUM IS ONE-HALF THE VALUE OF BB	
SS	2.530	-	64.25	-
U	0.031	-	0.80	-

USE SYMBOLS:

REVIEW SYMBOLS:

\*Review/year information is current as of the date of this document.  
For future coordination of changes to this document, draft circulation  
should be based on the information in the current DD0153.

This military standard is approved for use by all Departments  
of the Department of Defense. Selection for all new  
engineering and design applications and for replacement use shall  
be made from this document.

P.A.  
NAVY - AS  
Other CostARMY - EL  
AIR FORCE - 70

TITLE

CASSETTES AND REELS, PROJECTION  
MOTION-PICTURE, SUPER 8

MILITARY STANDARD

MS14115

PROCUREMENT SPECIFICATION

SUPERSEDES:

SHEET

27

OF

27

APPROVED 1 APR 1976 REVISED

STANDARDIZATION DOCUMENT IMPROVEMENT PROPOSAL		OMB Approval No. 22-R255	
<p><b>INSTRUCTIONS:</b> The purpose of this form is to solicit beneficial comments which will help achieve procurement of suitable products at reasonable cost and minimum delay, or will otherwise enhance use of the document. DoD contractors, government activities, or manufacturers/vendors who are prospective suppliers of the product are invited to submit comments to the government. Fold on lines on reverse side, staple in corner, and send to preparing activity. Comments submitted on this form do not constitute or imply authorization to waive any portion of the referenced document(s) or to amend contractual requirements. Attach any pertinent data which may be of use in improving this document. If there are additional papers, attach to form and place both in an envelope addressed to preparing activity.</p>			
<p><b>DOCUMENT IDENTIFIER AND TITLE</b> MS14115 CASSETTES AND REELS, PROJECTION, MOTION- PICTURE, SUPER 8mm</p>			
<p><b>NAME OF ORGANIZATION AND ADDRESS</b></p>		<p><b>CONTRACT NUMBER</b></p>	
		<p><b>MATERIAL PROCURED UNDER A</b>  <input type="checkbox"/> DIRECT GOVERNMENT CONTRACT    <input type="checkbox"/> SUBCONTRACT</p>	
<p><b>1. HAS ANY PART OF THE DOCUMENT CREATED PROBLEMS OR REQUIRED INTERPRETATION IN PROCUREMENT USE?</b>  <b>A. GIVE PARAGRAPH NUMBER AND WORDING.</b>   <b>B. RECOMMENDATIONS FOR CORRECTING THE DEFICIENCIES</b></p>			
<p><b>2. COMMENTS ON ANY DOCUMENT REQUIREMENT CONSIDERED TOO RIGID</b></p>			
<p><b>3. IS THE DOCUMENT RESTRICTIVE?</b>  <input type="checkbox"/> YES    <input type="checkbox"/> NO (If "Yes", in what way?)</p>			
<p><b>4. REMARKS</b></p>			
<p><b>SUBMITTED BY</b> (Printed or typed name and address - Optional)</p>		<p><b>TELEPHONE NO.</b></p>	
		<p><b>DATE</b></p>	

FOLD

DEPARTMENT OF THE NAVY  
Naval Air Engineering Center  
Philadelphia, PA 19112

OFFICIAL BUSINESS

POSTAGE AND FEES PAID  
DEPARTMENT OF THE NAVY  
DOD 316



Engineering Specifications and Standards Department (Code ES)  
Naval Air Engineering Center  
Philadelphia, PA 19112

FOLD